

T4S, R96W, 6th P.M.

Encana OIL & GAS (USA) INC.

Well location, SG 8512D-25 D36 496 (SURFACE LOCATION), located as shown in Lot 4 of Section 36, T4S, R96W, 6th P.M., Garfield County, Colorado.

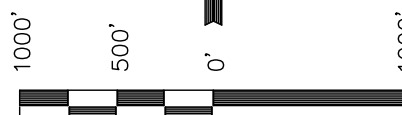
### BASIS OF ELEVATION

BENCH MARK (H79) LOCATED IN THE NE 1/4 OF SECTION 35, T4S, R98W, 6th P.M. TAKEN FROM THE BULL FORK QUADRANGLE, COLORADO, 7.5 MINUTE SERIES (TOPOGRAPHICAL MAP) PUBLISHED BY THE UNITED STATES DEPARTMENT OF THE INTERIOR, GEOLOGICAL SURVEY. SAID ELEVATION IS MARKED AS BEING 8535 FEET.

### BASIS OF BEARINGS

BASIS OF BEARINGS IS A G.P.S. OBSERVATION.

Sheet 1qq of 11



SCALE

### CERTIFICATE

THIS IS TO CERTIFY THAT THE ABOVE PLAT WAS PREPARED FROM FIELD NOTES OF ACTUAL SURVEYS MADE BY ME OR UNDER MY SUPERVISION AND THAT THE SAME ARE TRUE AND CORRECT TO THE BEST OF MY KNOWLEDGE AND BELIEF.

REGISTERED LAND SURVEYOR  
REGISTRATION NO. 17492  
STATE OF COLORADO

Revised: 05-18-11 D.R.B.

**UINTAH ENGINEERING & LAND SURVEYING**  
85 SOUTH 200 EAST - VERNAL, UTAH 84078  
(435) 789-1017

1953 Brass Cap  
0.8' High, Mound  
of Stones  
Lat: 39.666042°  
Long: 108.126567°

1953 Brass Cap  
0.6' High, Steel  
Post  
Lat: 39.666053°  
Long: 108.117142°

1953 Brass Cap  
0.4' High  
Lat: 39.666064°  
Long: 108.107683°

S89°46'52"W - 2653.74' (Meas.)

S89°44'26"W - 2664.30' (Meas.)

COC065557

**SG 8512D-25 D36 496**  
Elev. Ungraded Ground = 8303.3'  
Elev. Graded Ground = 8290.6'

Lot 4

Lot 3

Lot 2

Lot 1

1953 Brass Cap  
0.5' High, "T"  
Post  
Lat: 39.658806°  
Long: 108.126564°

1953 Brass Cap 0.3'  
High, Mound of Stones  
Lat: 39.658633°  
Long: 108.126569°

36

NOTE:  
THE PROPOSED BOTTOM HOLE FOR THIS WELL  
IS LOCATED IN THE NW 1/4 SW 1/4 OF SECTION  
25, T4S, R96W, 6th P.M. AT A DISTANCE OF  
1964' FSL 676' FWL. IT BEARS N10°19'53"W  
2292.01' FROM THE PROPOSED WELL HEAD.

COC061138

1953 Brass Cap  
0.4' High, "T" Post  
Lat: 39.658806°  
Long: 108.107661°

Lot 5

Lot 6

1953 Brass Cap  
0.8' High, N-E-W  
Fenceline, 3" PVC  
Post  
Lat: 39.651453°  
Long: 108.126700°

1953 Brass Cap  
1.1' High, E-W  
Fenceline, Steel  
Post  
Lat: 39.651533°  
Long: 108.117317°

1953 Brass Cap  
0.5' High, E-W  
Fenceline  
Post  
Lat: 39.651553°  
Long: 108.107675°

T4S  
T5S

S89°13'57"W - 2643.54' (Meas.)

S89°40'37"W - 2715.77' (Meas.)

### LEGEND:

└─ = 90° SYMBOL

● = PROPOSED WELL HEAD.

▲ = SECTION CORNERS LOCATED.

SEE SHEET 7A FOR EXISTING  
IMPROVEMENT WITHIN 400' OF THE  
PROPOSED WELL DISTURBANCE

### LINE TABLE

LINE	BEARING	LENGTH
L1	S00°52'27"W	62.59'

PDOP = 1.4

### NAD 83 (SURFACE LOCATION)

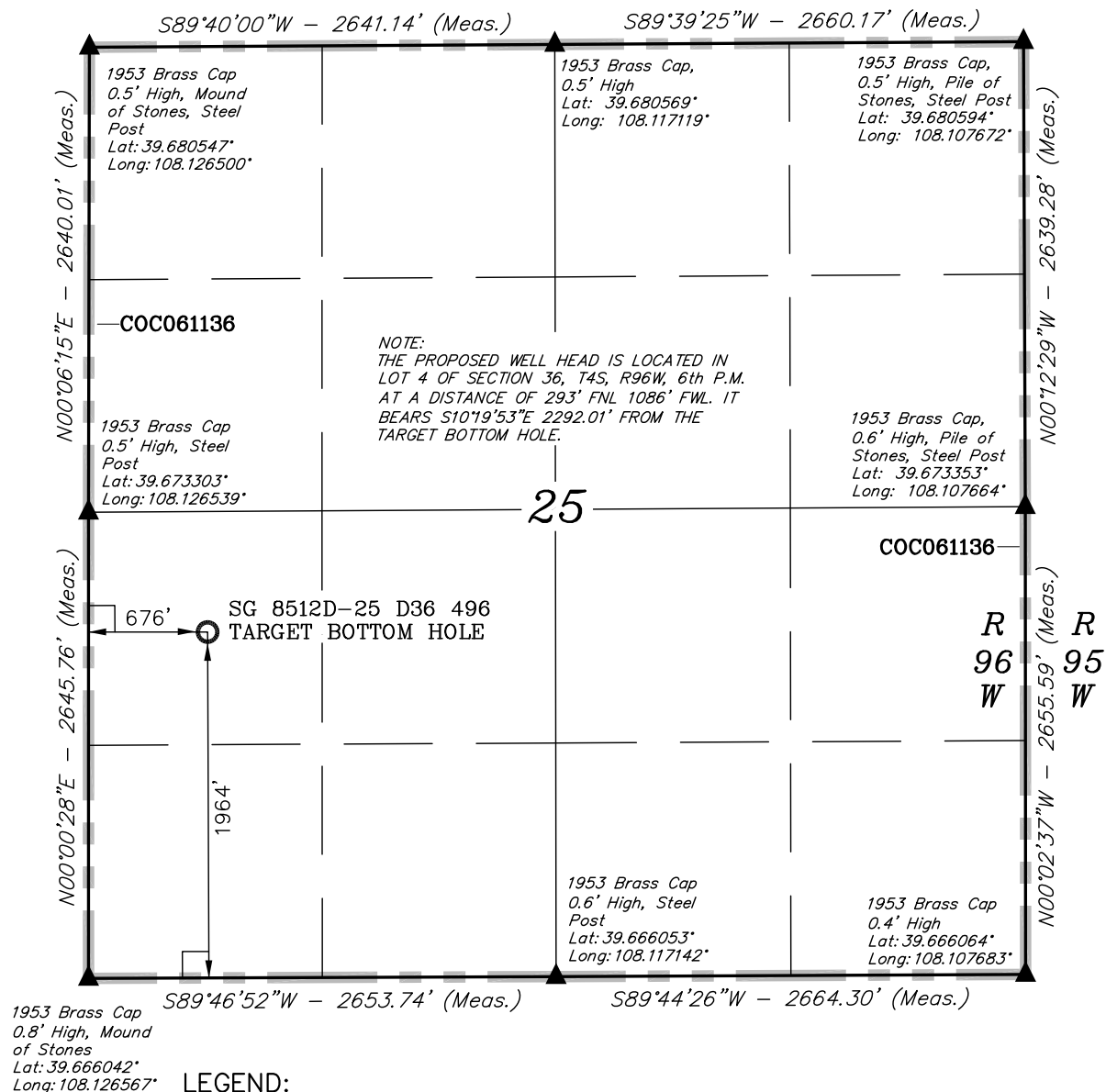
LATITUDE = 39°39'54.87" (39.665242)  
LONGITUDE = 108°07'21.75" (108.122708)

### NAD 27 (SURFACE LOCATION)

LATITUDE = 39°39'54.96" (39.665267)  
LONGITUDE = 108°07'19.46" (108.122072)

SCALE 1" = 1000'	DATE SURVEYED: 08-01-09	DATE DRAWN: 07-26-10
PARTY D.K. B.H. D.R.B.	REFERENCES G.L.O. PLAT	FILE Encana OIL & GAS (USA) INC.
WEATHER COOL		

T4S, R96W, 6th P.M.



# LEGEND:

└─┘ = 90° SYMBOL

● = PROPOSED WELL HEAD.

▲ = SECTION CORNERS LOCATED.

NAD 83 (TARGET BOTTOM HOLE)
LATITUDE = 39°40'17.16" (39.671433)
LONGITUDE = 108°07'26.93" (108.124147)
NAD 27 (TARGET BOTTOM HOLE)
LATITUDE = 39°40'17.25" (39.671458)
LONGITUDE = 108°07'24.64" (108.123511)

## Encana OIL & GAS (USA) INC.

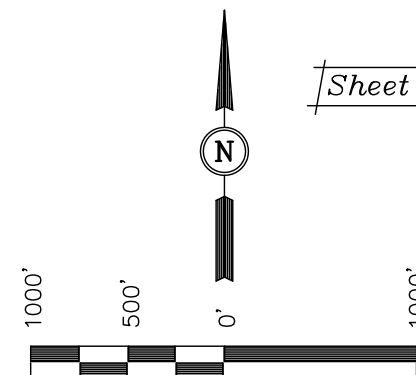
Well location, SG 8512D-25 D36 496 (TARGET BOTTOM HOLE), located as shown in the NW 1/4 SW 1/4 of Section 25, T4S, R96W, 6th P.M., Garfield County, Colorado.

## BASIS OF ELEVATION

BENCH MARK (H79) LOCATED IN THE NE 1/4 OF SECTION 35, T4S, R98W, 6th P.M. TAKEN FROM THE BULL FORK QUADRANGLE, COLORADO, 7.5 MINUTE SERIES (TOPO GRAPHICAL MAP) PUBLISHED BY THE UNITED STATES DEPARTMENT OF THE INTERIOR, GEOLOGICAL SURVEY. SAID ELEVATION IS MARKED AS BEING 8535 FEET.

## BASIS OF BEARINGS

BASIS OF BEARINGS IS A G.P.S. OBSERVATION.



Sheet 1rr of 11

## SCALE CERTIFICATE

THIS IS TO CERTIFY THAT THE ABOVE PLAT WAS PREPARED FROM FIELD NOTES OF ACTUAL SURVEYS MADE BY ME OR UNDER MY SUPERVISION AND THAT THE SAME ARE TRUE AND CORRECT TO THE BEST OF MY KNOWLEDGE AND BELIEF.

REGISTERED LAND SURVEYOR  
REGISTRATION NO. 17492  
STATE OF COLORADO

Revised: 05-18-11 D.R.B.

**UINTAH ENGINEERING & LAND SURVEYING**  
85 SOUTH 200 EAST - VERNAL, UTAH 84078  
(435) 789-1017

SCALE 1" = 1000'	DATE SURVEYED: 08-01-09	DATE DRAWN: 07-26-10
PARTY D.K. B.H. D.R.B.	REFERENCES G.L.O. PLAT	
WEATHER COOL	FILE Encana OIL & GAS (USA) INC.	