

# LOCATION DRAWING

**VEGETATION:**  
PASTURE

**SURFACE USE:**  
GRAZING

## REFERENCE POINT

LATITUDE: 40.59780

LONGITUDE: -104.07020

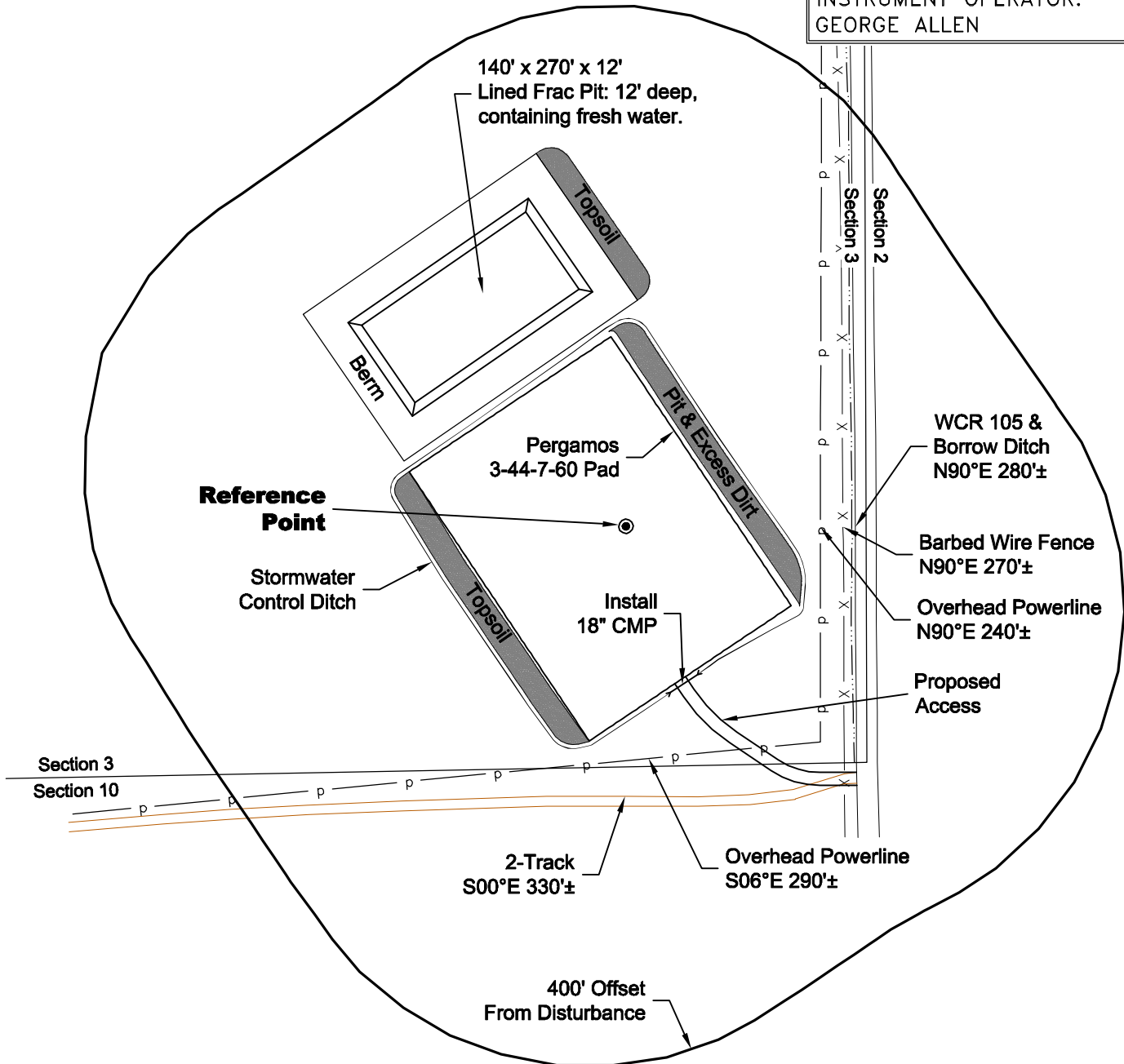
FOOTAGE: 297 FSL 297 FEL

GROUND ELEVATION: 4935.5

PDOP: 1.5 DATE: 4/12/2011

INSTRUMENT OPERATOR:

GEORGE ALLEN



North

0 200 400

Graphic Scale in Feet  
1 inch = 200 feet

DISTURBANCE ACREAGE:  
3.8± DRILLING OPERATIONS  
2.0± FRAC PIT  
1.0± INTERIM RECLAIM

## NOTE:

ALL PRODUCTION FACILITIES WILL BE ON PAD.

4/14/11



LAND SURVEYING AND MAPPING  
LAFAYETTE - WINTER PARK  
Ph 303 666 0379 Fx 303 665 6320

**CARRIZO OIL & GAS, INC**  
**PERGAMOS 3-44-7-60 PAD**

**SE1/4 SE1/4 SECTION 3 T7N R60W**  
**6th PM WELD COUNTY COLORADO**