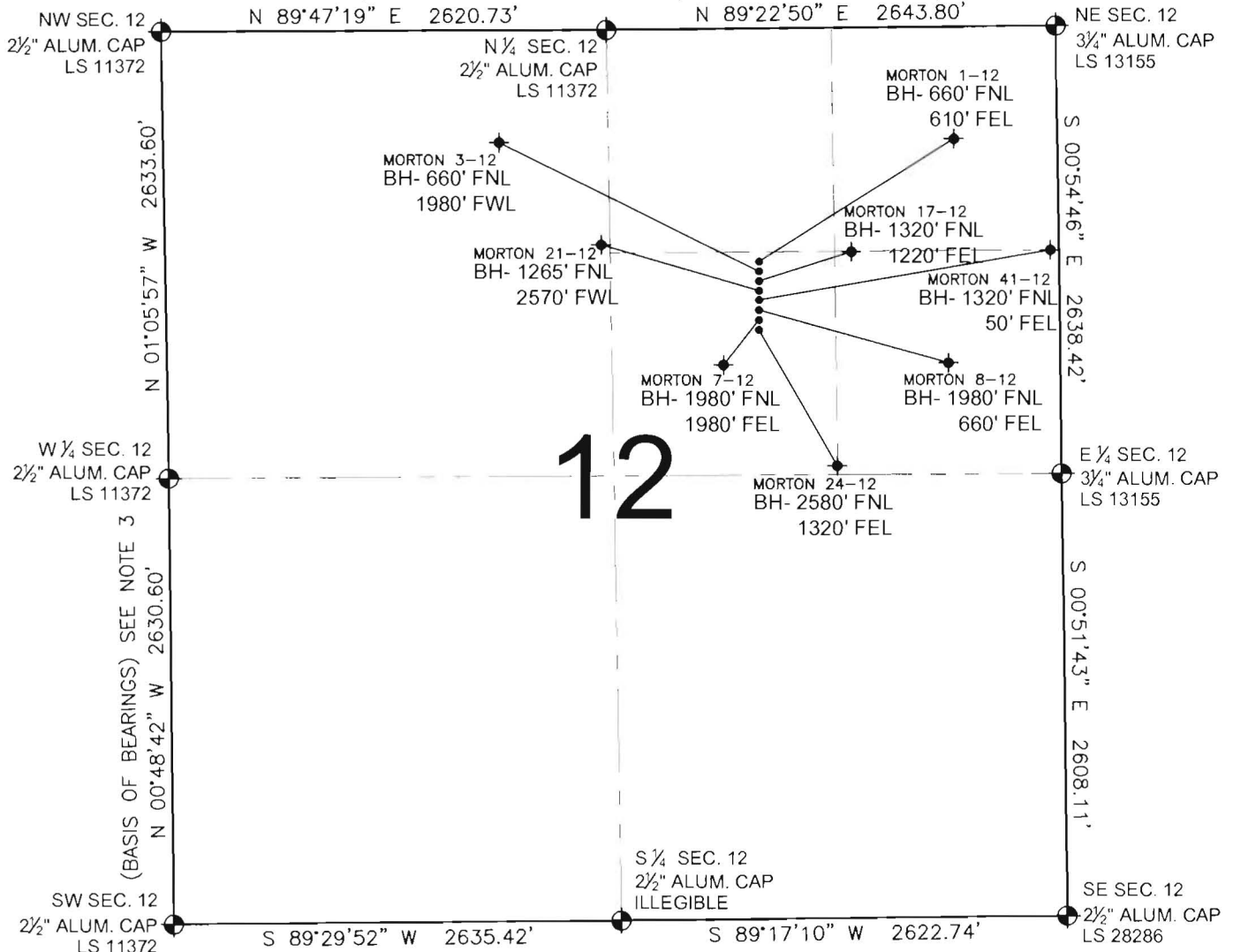


PAD DRAWING - MORTON 8 PAD

SECTION 12, TOWNSHIP 1 NORTH, RANGE 67 WEST, 6TH P.M.



LEGEND

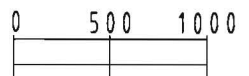
- = EXISTING MONUMENT
 = BOTTOM HOLE
 BH= BOTTOM HOLE
 = PROPOSED WELL
 = EXISTING WELL

NOTES:

- THIS SURVEY WAS DONE BY GPS METHODS AND CONFORMS TO THE MINIMUM STANDARDS SET BY THE C.O.G.C.C., RULE NO. 215
- ELEVATIONS SHOWN AT THE WELL HEAD, AS WELL AS HORIZONTAL CONTROL, ARE BASED ON GPS-RTK VALUES DERIVED FROM DOING 2-HOUR STATIC GPS SESSIONS AND REDUCTIONS USING O.P.U.S. SOLUTIONS.
VERTICAL = NAVD88; HORIZONTAL = NAD83/92
- THE BEARINGS SHOWN HEREON ARE BASED ON GPS OBSERVATIONS BETWEEN THE MONUMENTS SHOWN HEREON AS FOUND ON THE FIELD DATE BELOW.
- DISTANCES SHOWN ARE AT GROUND LEVEL, AS MEASURED IN THE FIELD, WITH TIES TO WELLS MEASURED AT A PERPENDICULAR TO SECTION LINES.

NOTES:

- MORTON 1-12 TO BE AT 1372' FNL, 1763' FEL.
 BOTTOM HOLE AT 660' FNL & 610' FEL.
 MORTON 3-12 TO BE AT 1382' FNL, 1762' FEL.
 BOTTOM HOLE AT 660' FNL & 1980' FWL.
 MORTON 17-12 TO BE AT 1392' FNL, 1762' FEL.
 BOTTOM HOLE AT 1320' FNL & 1220' FEL.
 MORTON 21-12 TO BE AT 1402' FNL, 1762' FEL.
 BOTTOM HOLE AT 1265' FNL & 2570' FWL.
 MORTON 41-12 TO BE AT 1412' FNL, 1761' FEL.
 BOTTOM HOLE AT 1320' FNL & 50' FWL.
 MORTON 8-12 TO BE AT 1422' FNL, 1761' FEL.
 BOTTOM HOLE AT 1980' FNL & 660' FEL.
 MORTON 7-12 TO BE AT 1432' FNL, 1760' FEL.
 BOTTOM HOLE AT 1980' FNL & 1980' FEL.
 MORTON 24-12 TO BE AT 1442' FNL, 1760' FEL.
 BOTTOM HOLE AT 2580' FNL & 1320' FEL.



SCALE: 1"=1000'

REVISIONS

INITIAL	DATE

PREPARED BY:

PFS

Petroleum Field Services, LLC
1801 W. 13th Ave.
Denver, CO 80204



KERR-MCGEE OIL & GAS ONSHORE LP

FIELD DATE:
05-20-10

DRAWING DATE:
06-01-10

BY:
SMF

PAD NAME:

MORTON 8 PAD

SURFACE LOCATION:

WELD COUNTY, COLORADO

SW 1/4 NE 1/4, SEC. 12, T1N, R67W