

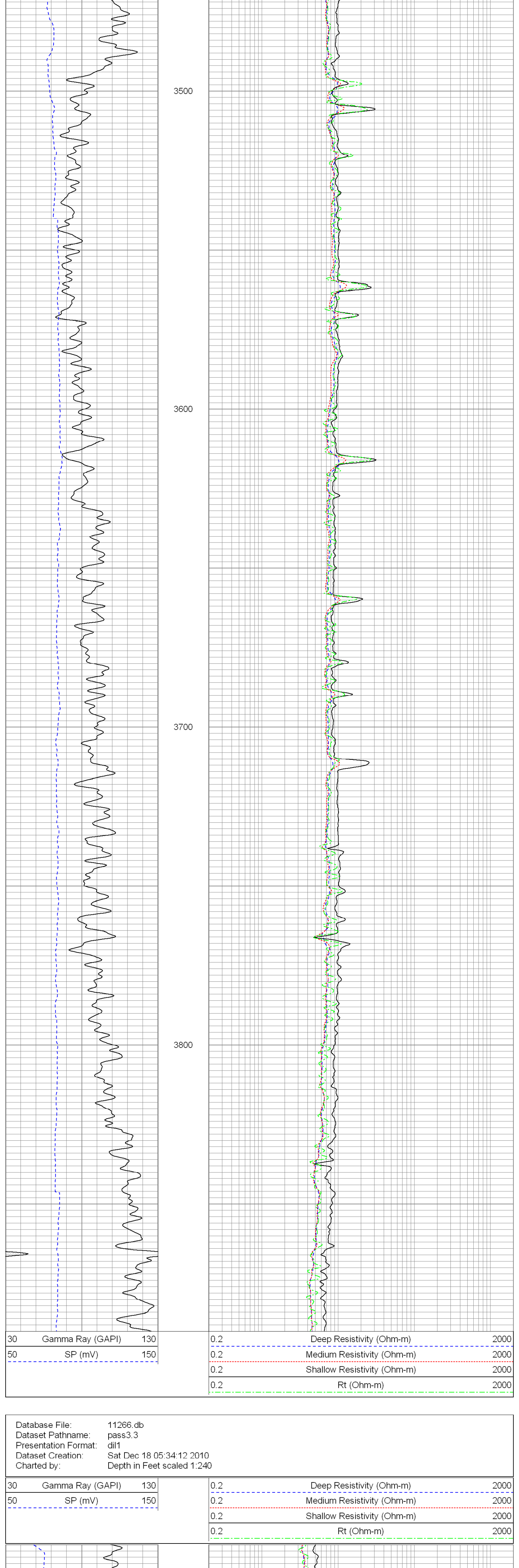
<div>PHOENIX SURVEYS, INC.</div> <div>API HIGH RESOLUTION INDUCTION</div>		Company Great Western Oil & Gas LLC	
Well HCW 24-24		Location	
Field Wattenberg		680 FSL & 1984 FWL	
County Weld		SE SW	
		State/Province Colorado	
		Sec 24 Twp - 0N Rge - 67W	
		GL	Elevation 4754
Permanent Datum		K B	Elevation
Log Measured From		D.F. 4759	
Date		GL 4754	
Run Number		December 18, 2010	
Bottom Logger			
Bottom Logged Interval			
Top Log Interval			
Casing Offset			
Casing Logger			
Tool Joint In Hole			
pH / Fluid Loss			
Density / Viscosity			
Flowline			
Run @ Mass Temp			
Run @ Mass Temp			
Source of Run / Run			
Run @ Bit			
Time Circulation Stopped			
Time Offset on Bottom			
Equipment			
Equipment Number			
Location			
Recorded By			
Unvised By			

All interpretations are opinions based on inferences from electrical or other measurements and we cannot and do not guarantee the accuracy or correctness of any interpretation, and we shall not, except in the case of gross or willful negligence on our part, be liable or responsible for any loss, costs, damages, or expenses incurred or sustained by any interpretation resulting from any interpretation made by any of our officers, agents or employees. These interpretations are also subject to our general terms and conditions set out in our current Price Schedule.

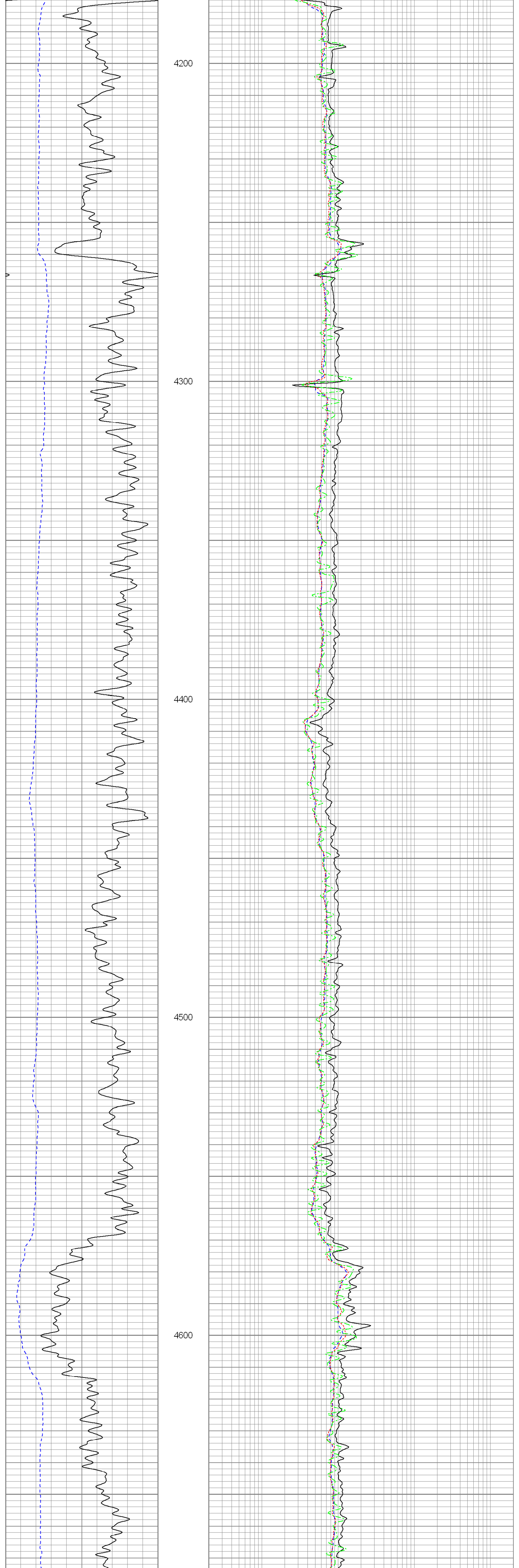
Comments

Annular volume calculated for 4.5" casing  
Ensign Drilling Rig 7  
Thank you for using Phoenix Surveys.  
API # 05-123-31499-00

Database File:	11266.db
Dataset Pathname:	pass3.3
Presentation Format:	dli1
Dataset Creation:	Sat Dec 18 05:34:12 2010
Charted by:	Depth in Feet scaled 1.240



Database File:	11266.db
Dataset Pathname:	pass3.3
Presentation Format:	dli1
Dataset Creation:	Sat Dec 18 05:34:12 2010
Charted by:	Depth in Feet scaled 1.240



Database File:	11266.db
Dataset Pathname:	pass3.3
Presentation Format:	dli1
Dataset Creation:	Sat Dec 18 05:34:12 2010
Charted by:	Depth in Feet scaled 1.240

