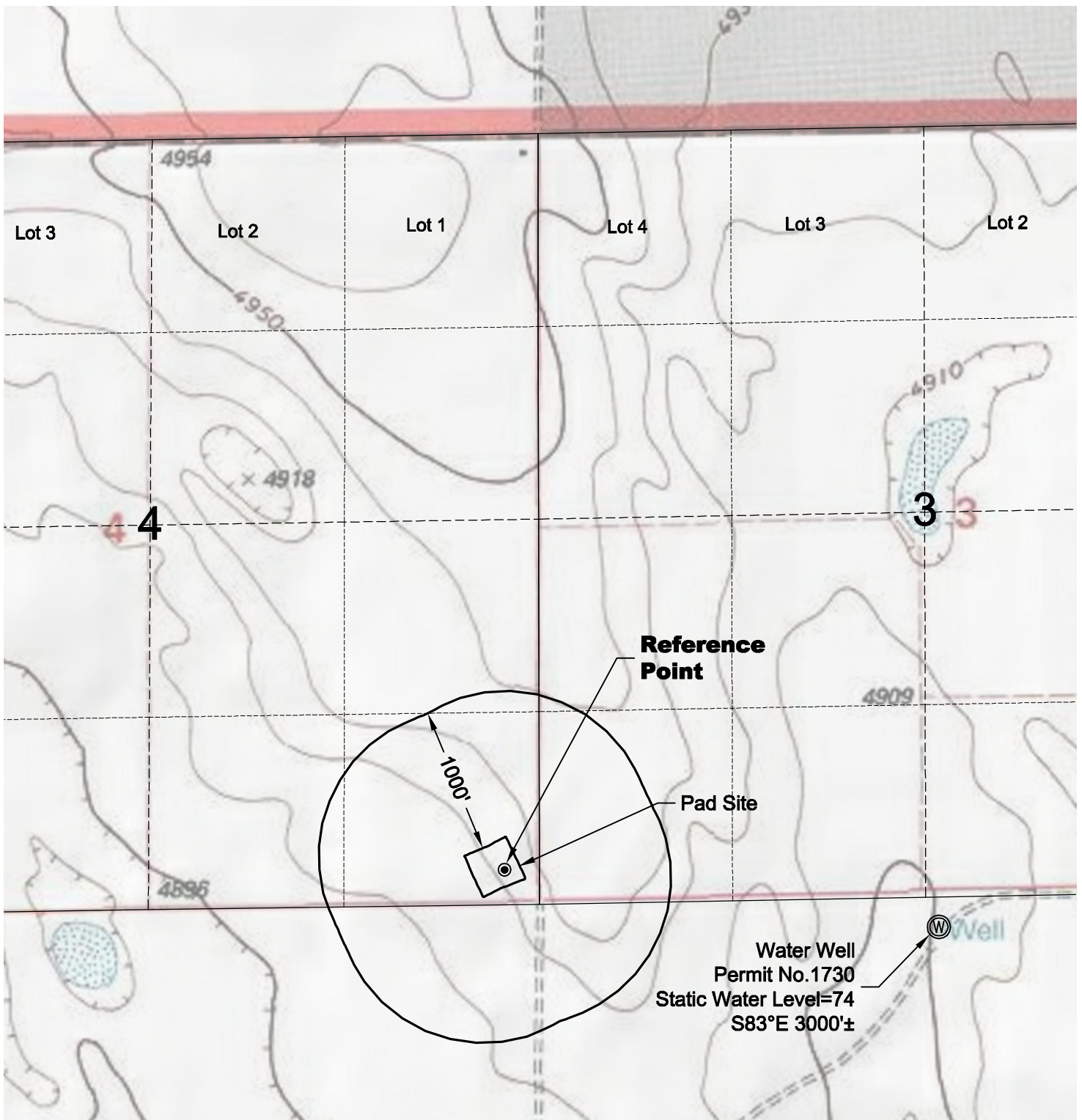


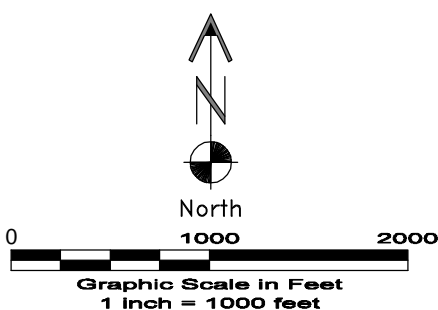
# HYDROLOGY MAP



## NOTE:

NO SURFACE WATERS WITHIN 1000' OF PAD SITE.

3/21/11



**GEO SURV**

LAND SURVEYING AND MAPPING  
LAFAYETTE - WINTER PARK  
Ph 303 666 0379 Fx 303 665 6320

**CARRIZO OIL & GAS, INC**  
**PERGAMOS 4-44-7-60 PAD**

**SE1/4 SE1/4 SEC. 4 T7N R60W**  
**6th PM WELD COUNTY COLORADO**