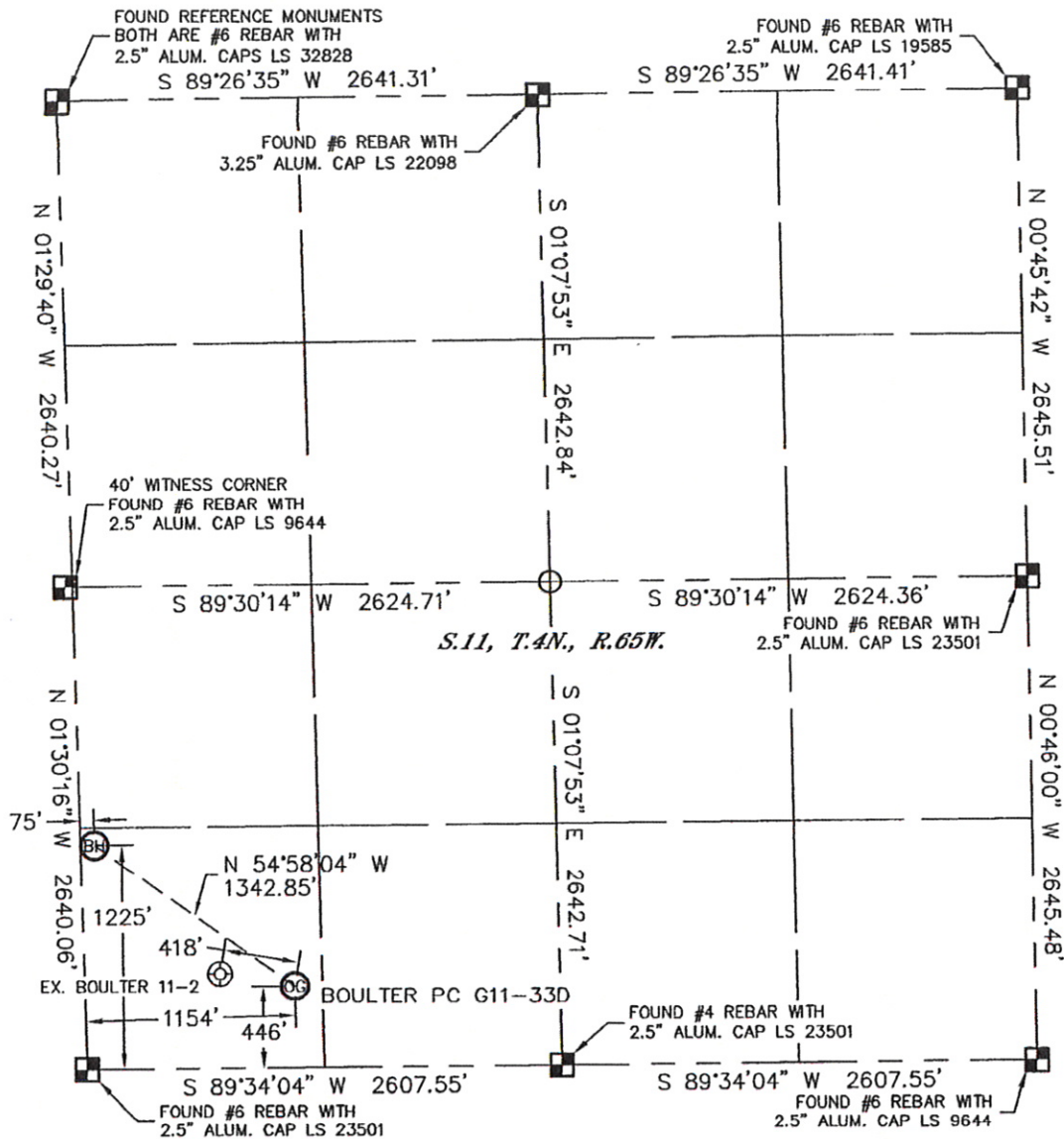


WELL LOCATION CERTIFICATE

THIS MAP DOES NOT REPRESENT A BOUNDARY SURVEY

SECTION: 11
TOWNSHIP: 4N
RANGE: 65W



In accordance with a request from Ryan Antonio with Noble Energy Inc. Lat40°, LLC has determined the surface location of the BOULTER PC G11-330 to be 446' from the SOUTH line and 1154' from the WEST line and the bottom hole to be 1225' from the SOUTH line and 75' from the WEST line as measured at right angles from the section lines of Section 11, Township 4 North, Range 65 West of the Sixth Principal Meridian, County of Weld, State of Colorado.

I hereby state that this Well Location Certificate was prepared by me, or under my direct supervision, that the fieldwork was completed on 1/11/11, for and on behalf of Noble Energy Inc. That this is not a Land Survey Plat or an Improvement Survey Plat, and that it is not to be relied upon for establishment of fence, building, or other future improvement lines.

NOTE:

- 1) Bearings shown are Grid Bearings of the Colorado State Plane Coordinate System, North Zone, North American Datum 1983/2007. The lineal dimensions as contained herein are based upon the "U.S. Survey Foot."
- 2) Ground elevations are based on an observed GPS elevation (NAVD 1988 DATUM).
- 3) NEAREST EXISTING WELL: BOULTER 11-2, 418'
- 4) IMPROVEMENTS: See LOCATION DRAWING for all visible improvements within 400' of disturbed area.
- 5) SURFACE USE: PASTURE
- 6) INSTRUMENT OPERATOR: ADAM KELLY

NOTE

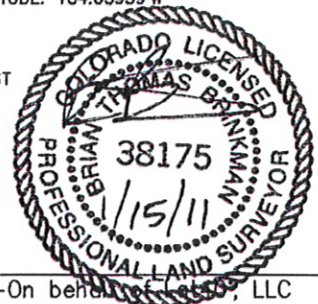
According to Colorado law, you must commence any legal action based upon any defect in this W.L.C. within three years after you discover such defect. In no event, may any action based upon any defect in this survey be commenced more than ten years after the date of the certificate shown hereon. (13-80-105 C.R.S.)

LEGEND

- = ALIQUOT MONUMENT AS DESCRIBED
- = CALCULATED POSITION

SURFACE LOCATION
LATITUDE: 40.32098°N
LONGITUDE: 104.63547°W
PDOP: 1.6
ELEV: 4683'
1/4, 1/4: SW1/4SW1/4

BOTTOM HOLE
LATITUDE: 40.32312°N
LONGITUDE: 104.63939°W
NEAREST PROPERTY LINE: 151' EAST



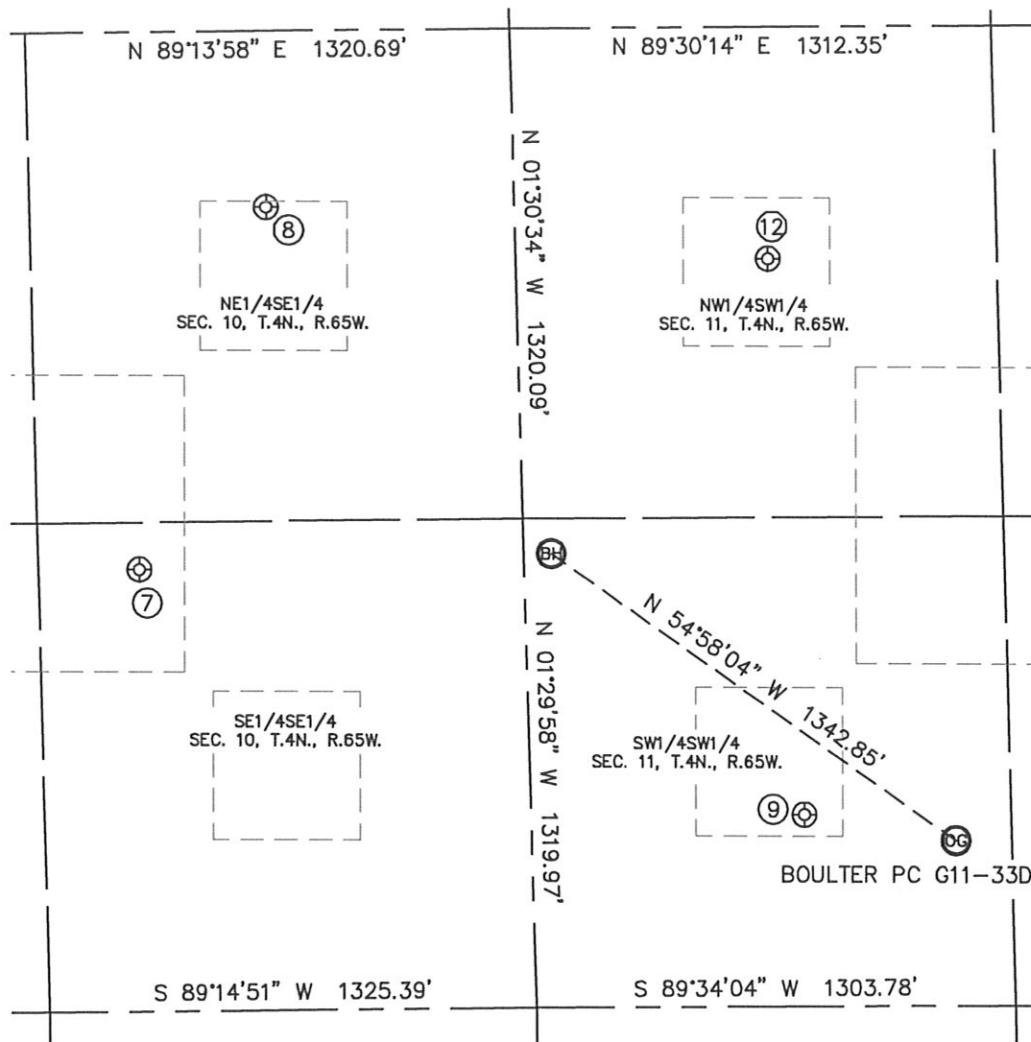
Brian T. Brinkman—On behalf of Lat40°, LLC
Colorado Licensed Professional
Land Surveyor No. 38175

PROJECT#: 2010172

SITE SKETCH

BOULTER PC G11-33D

SECTION: 11
TOWNSHIP: 4N
RANGE: 65W



⑦

JOHNSON 10-45
SE1/4SE1/4
1193' FSL
1049' FEL
LAT-40.32302°N
LONG-104.64341°W
PDOP: 1.7
ELEV: 4680'

⑧

BOULTER 10-41
NE1/4SE1/4
2165' FSL
677' FEL
LAT-40.32570°N
LONG-104.64214°W
PDOP: 1.8
ELEV: 4677'

⑨

BOULTER 11-2
SW1/4SW1/4
518' FSL
744' FWL
LAT-40.32118°N
LONG-104.63695°W
PDOP: 1.4
ELEV: 4680'

⑫

BOULTER 11-1
NW1/4SW1/4
2017' FSL
687' FWL
LAT-40.32529°N
LONG-104.63724°W
PDOP: 1.3
ELEV: 4678'

