

**HALLIBURTON**

---

# **SYNERGY RESOURCES CORPORATION**

---

**Meyer 6  
WATTENBERG  
Weld County , Colorado**

**Cement Production Casing  
13-Sep-2009**

**Job Site Documents**

# HALLIBURTON

## Work Order Contract

Order Number

0

Halliburton Energy Services, Inc.  
Houston, Texas 77056

TO: HALLIBURTON ENERGY SERVICES, INC. - YOU ARE HEREBY REQUESTED TO FURNISH EQUIPMENT AND SERVICE PERSONNEL TO DELIVER AND OPERATE THE SAME AS AN INDEPENDENT CONTRACTOR TO CUSTOMER LISTED BELOW AND DELIVER AND SELL PRODUCTS, SUPPLIES AND MATERIALS FOR THE PURPOSE OF SERVICING:

Well No. 6	Farm or Lease Meyer	County Weld	State Colorado	Well Permit Number 20085092
Customer SYNERGY RESOURCES CORPORATION		Well Owner ANADARKO PETROLEUM CORP EBUSINESS	Job Purpose Cement Production Casing	

**THIS WORK ORDER MUST BE SIGNED BEFORE WORK IS COMMENCED**

A. CUSTOMER REPRESENTATION - Customer warrants that the well is in proper condition to receive the services, equipment, products, and materials to be supplied by Halliburton Energy Services, Inc. (hereinafter "Halliburton")

B. PRICE AND PAYMENT - The services, equipment, products, and/or materials to be supplied hereunder are priced in accordance with Halliburton's current price list. All prices are exclusive of taxes. If Customer does not have an approved open account with Halliburton, all sums due are payable in cash at the time of performance of services or delivery of equipment, products or materials. If Customer has an approved open account, invoices are payable on the twentieth day after the date of invoice. Customer agrees to pay interest on any unpaid balance from the date payable until paid at the highest lawful contract rate applicable, but never to exceed 18% per annum. In the event Halliburton employs an attorney for collection of any account. Customer agrees to pay attorney fees of 20% of the unpaid account, or Halliburton's actual attorneys fees, whichever is greater, plus all collection and court costs. Customer agrees that the amount of attorney fees set out herein are reasonable and necessary.

C. RELEASE AND INDEMNITY - Customer agrees to **RELEASE** Halliburton Group from any and all liability for any and all damages whatsoever to property of any kind owned by, in the possession of, or leased by Customer and those persons and entities Customer has the ability to bind by contract or which are co-interest owners or joint ventures with Customer. Customer also agrees to **DEFEND, INDEMNIFY, AND HOLD** Halliburton Group **HARMLESS** from and against any and all liability, claims, costs, expenses, attorney fees and damages whatsoever for personal injury, illness, death, property damage and loss resulting from:

loss of well control; services to control a wild well whether underground or above the surface; reservoir or underground damage, including loss of oil, gas, other mineral substances or water; surface damage arising from underground damage; damage to or loss of the well bore; subsurface trespass or any action in the nature thereof; fire; explosion; subsurface pressure; radioactivity; and pollution and contamination and its cleanup and control.

CUSTOMER'S RELEASE, DEFENSE, INDEMNITY AND HOLD HARMLESS obligations will apply even if the liability and claims are caused by the sole, concurrent, active or passive negligence, fault, or strict liability of one or more members of the Halliburton Group, the unseaworthiness of any vessel or any defect in the data, products, supplies, materials or equipment furnished by any member or members of the Halliburton Group whether in the design, manufacture, maintenance or marketing thereof or from a failure to warn of such defect. "Halliburton Group" is defined as Halliburton Energy Services, Inc., its parent, subsidiary, and affiliated companies, insurers and subcontractors and all its/their officers, directors, employees, consultants and agents. Customer's RELEASE, DEFENSE, INDEMNITY AND HOLD HARMLESS obligations apply whether the personal injury, illness, death, property damage or loss is suffered by one or more members of the Halliburton Group, Customer, or any other person or entity. Customer agrees to support such obligations assumed herein with liability insurance with limits of not less than \$500,000. Customer agrees to name Halliburton Group as named additional insured on all of its general liability policy(s). Customer agrees that its liability under this Contract is not limited by the amounts of its insurance coverage, except where and as may be required by applicable local law for the provisions of this Contract to be enforceable.

D. EQUIPMENT LIABILITY - Customer shall at its risk and expense attempt to recover any Halliburton Group equipment lost or lodged in the well. If the equipment is recovered and repairable, Customer shall pay the repair costs, unless caused by Halliburton's sole negligence. If the equipment is not recovered or is irreparable, Customer shall pay the replacement cost, unless caused by Halliburton's sole negligence. If a radioactive source becomes lost or lodged in the well, Customer shall meet all requirements of Section 39.15(a) of the Nuclear Regulatory Commission regulations and any other applicable laws or regulations concerning retrieval or abandonment and shall permit Halliburton to monitor the recovery or abandonment efforts all at no risk or liability to Halliburton Group. Customer shall be responsible for damage to or loss of Halliburton group equipment, products, and materials while in transit aboard Customer-supplied transportation, even if such is arranged by Halliburton at Customer's request, and during loading and unloading from such transport. Customer will also pay for the repair or replacement of Halliburton group equipment damaged by corrosion or abrasion due to well effluents

E. LIMITED WARRANTY - Halliburton warrants only title to the equipment, products, and materials supplied under this Contract and that same are free from defects in workmanship and materials for thirty (30) days from the date of delivery. THERE ARE NO WARRANTIES, EXPRESS OR IMPLIED, OF MERCHANTABILITY, FITNESS OR OTHERWISE BEYOND THOSE STATED IN THE IMMEDIATELY PRECEDING SENTENCE. Halliburton's sole liability and Customer's exclusive remedy in any cause of action (whether in contract, tort, breach of warranty or otherwise) arising out of the sale, lease or use of any equipment, products, or materials is expressly limited to the replacement of such on their return to Halliburton or, at Halliburton's option, to the allowance to Customer of credit for the cost of such items. In no event shall Halliburton be liable for special, incidental, indirect, consequential, or punitive damages. Because of the uncertainty of variable well conditions and the necessity of relying on facts and supporting services furnished by others, **HALLIBURTON IS UNABLE TO GUARANTEE THE EFFECTIVENESS OF THE EQUIPMENT, MATERIALS, OR SERVICE, NOR THE ACCURACY OF ANY CHART INTERPRETATION, RESEARCH ANALYSIS, JOB RECOMMENDATION OR OTHER DATA FURNISHED BY HALLIBURTON GROUP.** Halliburton personnel will use their best efforts in gathering such information and their best judgment in interpreting it, but Customer agrees that Halliburton Group shall not be liable for and CUSTOMER SHALL INDEMNIFY HALLIBURTON GROUP AGAINST ANY DAMAGES ARISING FROM THE USE OF SUCH INFORMATION, even if such is contributed to or caused by the active or passive negligence, fault or strict liability of any member or members of Halliburton Group. Halliburton also does not warrant the accuracy of data transmitted by electronic process, and Halliburton will not be responsible for accidental or intentional interception of such data by third parties.

F. GOVERNING LAW - The validity, interpretation and construction of this Contract shall be determined by the laws of the jurisdiction where the services are performed or the equipment or materials are delivered

G. DISPUTE RESOLUTION Customer and Halliburton agree that any dispute that may arise out of the performance of this Contract shall be resolved by binding arbitration by a panel of three arbitrators under the rules of the American Arbitration Association. The arbitration will take place in Houston, TX.

H. SEVERABILITY - If any provision or part thereof of this Contract shall be held to be invalid, void, or of no effect for any reason, such holding shall not be deemed to affect the validity of the remaining provisions of this Contract which can be given effect, without the invalid provision or part thereof, and to this end, the provisions of this Contract are declared to be severable. Customer and Halliburton agree that any provision of this Contract that is unenforceable or void under applicable law will be modified to achieve the intent of the parties hereunder to the greatest extent allowed by applicable law.

I. MODIFICATIONS - Customer agrees that Halliburton shall not be bound by any modifications to this Contract, except where such modification is made in writing by a duly authorized executive officer of Halliburton. Requests for modifications should be directed to the Vice President - Legal, 10200 Bellaire Blvd., Houston, TX. 77072-5299.

**I HAVE READ AND UNDERSTAND THIS WORK ORDER CONTRACT WHICH CONTAINS RELEASE AND INDEMNITY LANGUAGE WHICH CUSTOMER ACKNOWLEDGES**

**IS CONSPICUOUS AND AFFORDS FAIR AND ADEQUATE NOTICE AND I REPRESENT THAT I AM AUTHORIZED TO SIGN THE SAME AS CUSTOMER'S AGENT. I AM SIGNING THIS WORK ORDER CONTRACT WITH THE UNDERSTANDING THAT ITS TERMS AND CONDITIONS WILL NOT APPLY TO THE EXTENT THEY CONFLICT WITH TERMS AND CONDITIONS OF A SIGNED MASTER SERVICE CONTRACT BETWEEN THE PARTIES.**

SIGNED:

CUSTOMER Authorized Signatory

DATE:

09/13/09

TIME:

2215

A.M./PM.



## Field Ticket

<b>Field Ticket Number:</b>	<b>Field Ticket Date:</b> Sunday, September 13, 2009
<b>Bill To:</b>     	<b>Job Name:</b> Meyer <b>Order Type:</b> Streamline Order (ZOH) <b>Well Name:</b> Meyer 6 <b>Company Code:</b> 1100 <b>Customer PO No.:</b> NA <b>Shipping Point:</b> Brighton, CO, USA <b>Sales Office:</b> Rocky Mountains BD <b>Well Type:</b> Oil <b>Well Category:</b> Development
<b>Ship To:</b> SYNERGY MEYER 6, WELD MEYER 2744174 , CO	

Material	Description	QTY	UOM	Base Amt	Unit Amt	Gross Amount	Discount	Net Amount
7523	CMT PRODUCTION CASING BOM	1	JOB	0.00	0.00	0.00		0.00
2	MILEAGE FOR CEMENTING CREW,ZI	54	MI	0.00	5.76	311.04	65%	108.86
	Number of Units	1						
1	ZI-MILEAGE FROM NEAREST HES BASE,/UNIT	54	MI	0.00	9.79	528.66	65%	185.03
	Number of Units	1						
16091	ZI - PUMPING CHARGE	1	EA	0.00	9,080.00	9,080.00	65%	3,178.00
	DEPTH	7754						
	FEET/METERS (FT/M)		FT					
76400	ZI MILEAGE,CMT MTLS DEL/RET MIN	27	MI	0.00	3.35	2,401.45	65%	840.51
	NUMBER OF TONS	26.55						
3965	HANDLE&DUMP SVC CHRG, CMT&ADDITIVES,ZI	757	CF	0.00	5.49	4,155.93	65%	1,454.58
	NUMBER OF EACH	1						
7	ENVIRONMENTAL CHARGE,/JOB,ZI	1	JOB	0.00	134.00	134.00		134.00
8	IRON SAFETY INSPECTION SURCHARGE /JOB ZI	1	JOB	0.00	83.00	83.00		83.00
372867	Cmt PSL - DOT Vehicle Charge, CMT	3	EA	0.00	241.00	723.00		723.00
132	PORT. DAS W/CEMWIN;ACQUIRE W/HES, ZI	1	JOB		0.00	0.00		0.00
	NUMBER OF DAYS	1						
114	R/A DENSOMETER W/CHART RECORDER,/JOB,ZI	1	JOB		0.00	0.00		0.00
	NUMBER OF UNITS	1						
74038	ZI PLUG CONTAINER RENTAL-1ST DAY	1	EA		0.00	0.00		0.00
	DAYS OR FRACTION (MIN1)	1						
90	ZI QUICK LATCH ATTACHMENT	1	JOB		0.00	0.00		0.00

Material	Description	QTY	UOM	Base Amt	Unit Amt	Gross Amount	Discount	Net Amount
	SIZE IN INCHES/MILLIMETER INCHES/MILLIMETERS (IN/MM)	1	IN					
139	ADC (AUTO DENSITY CTRL) SYS, /JOB,ZI NUMBER OF UNITS	1 1	JOB		0.00	0.00		0.00
528788	MUD FLUSH III	1000	GAL	0.00	2.16	2,160.95	65%	756.33
452010	VERSACEM (TM) SYSTEM	345	SK			29,601.49	65%	10,360.51
452010	VERSACEM (TM) SYSTEM	150	SK			12,741.58	65%	4,459.55
100004879	SHOE,FLT,4-1/2 8RD,2-3/4 SSII	1	EA	0.00	599.00	599.00	65%	209.65
100004752	CLR,FLT,4-1/2 8RD,9.5-13.5PPF,2-3/4	1	EA	0.00	700.00	700.00	65%	245.00
100004473	CENTRALIZER ASSY - API - 4-1/2 CSG X	35	EA	0.00	126.00	4,410.00	65%	1,543.50
100004622	CLAMP - LIMIT - 4-1/2 - HINGED -	1	EA	0.00	44.20	44.20	65%	15.47
101241019	PLUG,CMTG, TOP,4 1/2,HWE,3.65 MIN/4.14 MA	1	EA	0.00	186.00	186.00	65%	65.10
100005045	KIT,HALL WELD-A	1	EA	0.00	74.30	74.30	65%	26.00
101583425	CLAYFIX 3	13	GAL	0.00	94.85	1,233.05		1,233.05
				<b>Totals</b>	<b>USD</b>	<b>69,167.65</b>	<b>43,546.51</b>	<b>25,621.14</b>

Halliburton Rep:

JASON GIBBS

Customer Agent:

Don Libhart

Halliburton Approval

THIS OUTPUT DOES NOT INCLUDE TAXES. APPLICABLE SALES TAX WILL BE BILLED ON THE FINAL INVOICE.

CUSTOMER HEREBY ACKNOWLEDGES RECEIPT OF THE MATERIALS AND SERVICES DESCRIBED ABOVE AND ON THE ATTACHED DOCUMENTS.

X

FIELD TICKET TOTAL USD

25,621.14

Customer Signature

Was our HSE performance satisfactory? Y or N  
(Health, Safety, Environment)

Were you satisfied with our Equipment? Y or N

Were you satisfied with our people? Y or N

Comments

Did we provide job DVA above our normal service today? Y or N

Hours: \_\_\_\_\_

Other: \_\_\_\_\_

Customer Initials: \_\_\_\_\_

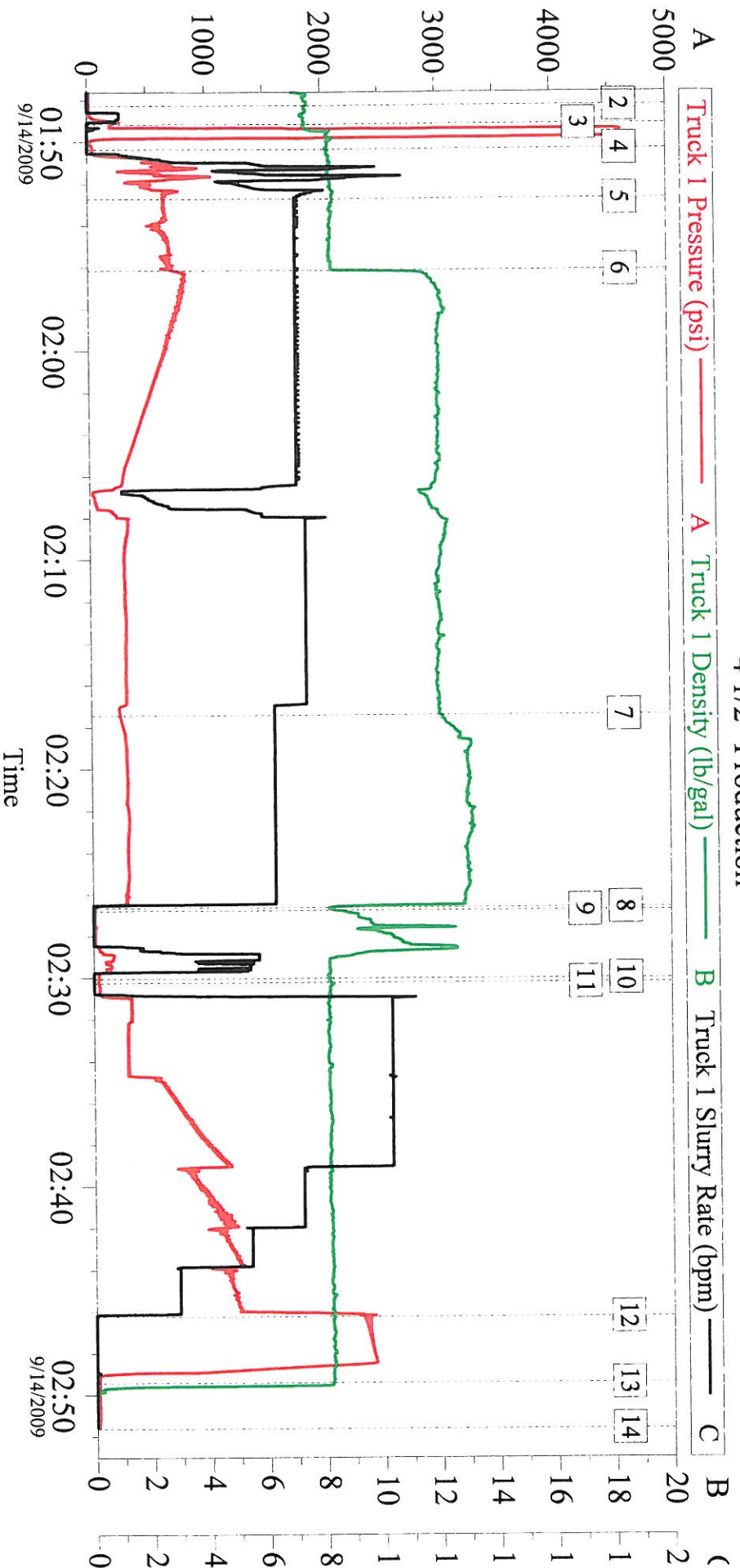
Please provide details:

Field Ticket Number:

Field Ticket Date: Sunday, September 13, 2009

2 of 2

# Synergy Meyer #6 4 1/2" Production



## Global Event Log

2	Start Job	01:48:16	3	Test Lines	01:49:09	4	Pump Spacer 1	01:50:21
5	Pump Spacer 2	01:52:43	6	Pump Lead Cement	01:56:09	7	Pump Tail Cement	02:17:27
8	Shutdown	02:26:39	9	Clean Lines	02:26:47	10	Drop Top Plug	02:30:03
11	Pump Displacement	02:30:15	12	Bump Plug	02:46:15	13	End Job	02:49:25
14	Ending Job	02:51:37						

Customer: Synergy  
Well Description: 4.5" Production

Job Date: 13-Sep-2009  
UWI: 05-123-29166-00

Sales Order #:

*Water Analysis For Cement Mixing Water*

Company:	SYNERGY RESOURCES CORPORATION	Lease:	Meyer	Well Name, Nbr:	Meyer, 6
Rig Name/Nbr:	122	API No. /UWI	05-123-29166-00		
County:	Weld	State:	Colorado	Country:	United States of America

---

**FIELD TEST KIT**

**NOTE:** These tests are an indication of POTENTIAL contamination and are not conclusive.  
For more comprehensive results, a sample should be submitted to the Local Area Lab

Date 13-Sep-2009  
Service Supervisor GIBBS, JASON

Ticket Number 0  
Water Source Rig

Temperature 56  
pH. 7  
Specific Gravity

Chart in Kit shows comparisons of: Chlorides  
Calcium

PASS	FAIL	<u>Chloride</u>	<u>0</u>
<input type="checkbox"/>	<input type="checkbox"/>		
		<u>Carbonate</u>	<u>8</u>
<input type="checkbox"/>	<input type="checkbox"/>		
		<u>Sulfate</u>	<u>Below 200</u>
<input type="checkbox"/>	<input type="checkbox"/>		
		<u>Iron (Fe)</u>	<u>0</u>
<input type="checkbox"/>	<input type="checkbox"/>		



**Material Roll Up**

Crew: Blak Crew  
 Requested Job Start Date: 09/31/09

Sales Order #:

AFE #:

WO #:

PO #:

**Colorado Oil and Gas Commission Wellsite Form**

Customer: Syenergy Field: Wattenberg Job Type: PRODUCTION CASING  
 UWI / API Number: 05-123-29166-00 County/Parish: WELD Service Supervisor: JASON GIBBS  
 Well Name: Meyer State: COLORADO  
 Well No: 6 Latitude:  
 Stage / Zone: Longitude: Cust Rep Name: Don Libhart  
 Formation: Sect / Twn / Rng: 121/ 5N/ 66W Cust Rep Phone #: 970 396 9763

**Do Not leave the yard without the proper MSDS documentation for All chemicals.**

Colorado Oil and Gas Commission					
Material	Delivered to Location	UOM	Specific Gravity	Weight (lbs)	Comment
Mudflush III	Ensign 122			1000 gal	
VersaCem 12.0#	Ensign 122			345 sks	
VersaCem 13.0#	Ensign 122			150 sks	
Clayfix	Ensign 122			15 gal	
		GAL			
		LB			

☐

Operator provided all Material Safety Data Sheets (MSDS) related to material listed above.  
 Operator representative will check box to designate he/she has received all MSDS documentation.

\_\_\_\_\_  
 Operator Representative Signature

*The Road to Excellence Starts with Safety*

The Road to Excellence Starts With Safety

Sold To #: 359915	Ship To #: 2744174	Quote #:	Sales Order #: 0
Customer: SYNERGY RESOURCES CORPORATION		Customer Rep: Libhart, Don	
Well Name: Meyer		Well #: 6	API/UWI #: 05-123-29166-00
Field: WATTENBERG	City (SAP): UNKNOWN	County/Parish: Weld	State: Colorado
Legal Description: Section 21 Township 5N Range 66W			
Lat: N 0 deg. OR N 0 deg. 0 min. 0 secs.		Long: E 0 deg. OR E 0 deg. 0 min. 0 secs.	
Contractor: ENSIGN		Rig/Platform Name/Num: 122	
Job Purpose: Cement Production Casing			Ticket Amount:
Well Type: Development Well		Job Type: Cement Production Casing	
Sales Person: FLING, MATTHEW		Srv Supervisor: GIBBS, JASON	MBU ID Emp #: 300487

Activity Description	Date/Time	Cht #	Rate bbl/min	Volume bbl		Pressure psig		Comments
				Stage	Total	Tubing	Casing	
Arrive at Location from Service Center	09/13/2009 21:20							
Assessment Of Location Safety Meeting	09/13/2009 21:45							
Safety Meeting	09/14/2009 01:30							
Start Job	09/14/2009 01:48							
Test Lines	09/14/2009 01:49							Test Lines 4700 psi
Pump Spacer 1	09/14/2009 01:50		4	10			198.0	H2O supplied by the rig.
Pump Spacer 2	09/14/2009 01:52		4	24			643.0	Mudfush III Spacer mixed with H2O supplied by rig.
Pump Lead Cement	09/14/2009 01:56		7	153			721.0	345 sks of VersaCem @ 12.0 #/gal mixed with H2O supplied by rig.
Pump Tail Cement	09/14/2009 02:17		6	52			242.0	150 sks of VersaCem @ 13.0 #/gal mixed with H2O supplied by rig.
Shutdown	09/14/2009 02:26							
Clean Lines	09/14/2009 02:26							
Drop Top Plug	09/14/2009 02:30							
Pump Displacement	09/14/2009 02:30		8	120			1456.0	Clayfix III mixed into H2O supplied by the rig.
Bump Plug	09/14/2009 02:46						2326.0	
End Job	09/14/2009 02:49							



*The Road to Excellence Starts with Safety*

Sold To #: 359915	Ship To #: 2744174	Quote #:	Sales Order #: 0
Customer: SYNERGY RESOURCES CORPORATION	Customer Rep: Libhart, Don		
Well Name: Meyer	Well #: 6	API/UWI #: 05-123-29166-00	
Field: WATTENBERG	City (SAP): UNKNOWN	County/Parish: Weld	State: Colorado
Legal Description: Section 21 Township 5N Range 66W			
Contractor: ENSIGN	Rig/Platform Name/Num: 122		
Job Purpose: Cement Production Casing			
Well Type: Development Well	Job Type: Cement Production Casing		
Sales Person: FLING, MATTHEW	Srvc Supervisor: GIBBS, JASON	MBU ID Emp #: 300487	

### Job Personnel

HES Emp Name	Exp Hrs	Emp #	HES Emp Name	Exp Hrs	Emp #	HES Emp Name	Exp Hrs	Emp #
FADELEY, RYAN	6.0	408060	GIBBS, JASON Edwin	6.0	300487	SIPNEFSKI, ROBERT Anthony	6.0	419391
VASQUEZ, ALVARO A	6.0	401745	WILEY, JAMES A	6.0	440080			

### Equipment

HES Unit #	Distance-1 way	HES Unit #	Distance-1 way	HES Unit #	Distance-1 way	HES Unit #	Distance-1 way
10248060C	27 mile	10804557C	27 mile	10829457	27 mile		
11362287	27 mile	10246780	27 mile				

### Job Hours

Date	On Location Hours	Operating Hours	Date	On Location Hours	Operating Hours	Date	On Location Hours	Operating Hours
TOTAL			Total is the sum of each column separately					

### Job

### Job Times

Formation Name					Date	Time	Time Zone	
Formation Depth (MD)	Top		Bottom		Called Out	13 - Sep - 2009	19:00	MST
Form Type			BHST		On Location	13 - Sep - 2009	21:30	MST
Job depth MD	7754. ft		Job Depth TVD	7754. ft	Job Started	14 - Sep - 2009	01:48	MST
Water Depth			Wk Ht Above Floor	4. ft	Job Completed	14 - Sep - 2009	02:51	MST
Perforation Depth (MD)	From		To		Departed Loc	14 - Sep - 2009	04:00	MST

### Well Data

Description	New / Used	Max pressure psig	Size in	ID in	Weight lbm/ft	Thread	Grade	Top MD ft	Bottom MD ft	Top TVD ft	Bottom TVD ft
Open Hole				7.875				459.	7760.	.	.
Production Casing	New		4.5	4.	11.6			.	7754.	.	.
Surface Casing	Used		8.625	8.097	24.		J-55	.	459.	.	.

### Sales/Rental/3<sup>rd</sup> Party (HES)

Description	Qty	Qty uom	Depth	Supplier
SHOE,FLT,4-1/2 8RD,2-3/4 SSII	1	EA		
CLR,FLT,4-1/2 8RD,9.5-13.5PPF,2-3/4	1	EA		
CENTRALIZER ASSY - API - 4-1/2 CSG X	35	EA		
CLAMP - LIMIT - 4-1/2 - HINGED -	1	EA		
PLUG,CMTG,TOP,4 1/2,HWE,3.65 MIN/4.14 MA	1	EA		
KIT,HALL WELD-A	1	EA		

### Tools and Accessories

Type	Size	Qty	Make	Depth	Type	Size	Qty	Make	Depth	Type	Size	Qty	Make
Guide Shoe					Packer					Top Plug			
Float Shoe					Bridge Plug					Bottom Plug			
Float Collar					Retainer					SSR plug set			
Insert Float										Plug Container			
Stage Tool										Centralizers			

Miscellaneous Materials													
Gelling Agt		Conc		Surfactant		Conc		Acid Type		Qty		Conc	%
Treatment Fld		Conc		Inhibitor		Conc		Sand Type		Size		Qty	
Fluid Data													
Stage/Plug #: 1													
Fluid #	Stage Type	Fluid Name			Qty	Qty uom	Mixing Density lbm/gal	Yield ft3/sk	Mix Fluid Gal/sk	Rate bbl/min	Total Mix Fluid Gal/sk		
1	Water Spacer				10.00	bbl	8.33	.0	.0	5.0			
2	MUD FLUSH III	MUD FLUSH III - SBM (528788)			24.00	bbl	8.4	.0	.0	5.0			
3	Versacem 12#	VERSACEM (TM) SYSTEM (452010)			345.0	sacks	12.	2.49	13.91	7.0	13.91		
4	Versacem 13#	VERSACEM (TM) SYSTEM (452010)			150.0	sacks	13.	1.96	9.93	6.0	9.93		
5	CLAYFIX 3				120.00	bbl	8.33	.0	.0	.0			
2.5 gal/Mgal		CLAYFIX 3, TOTETANK (101583425)											
Calculated Values				Pressures				Volumes					
Displacement		Shut In: Instant		Lost Returns		Cement Slurry		Pad					
Top Of Cement		5 Min		Cement Returns		Actual Displacement		Treatment					
Frac Gradient		15 Min		Spacers		Load and Breakdown		Total Job					
Rates													
Circulating		Mixing		Displacement		Avg. Job							
Cement Left In Pipe		Amount	12 ft	Reason	Shoe Joint								
Frac Ring # 1 @		ID	Frac ring # 2 @	ID	Frac Ring # 3 @		ID	Frac Ring # 4 @		ID			
The Information Stated Herein Is Correct					Customer Representative Signature								