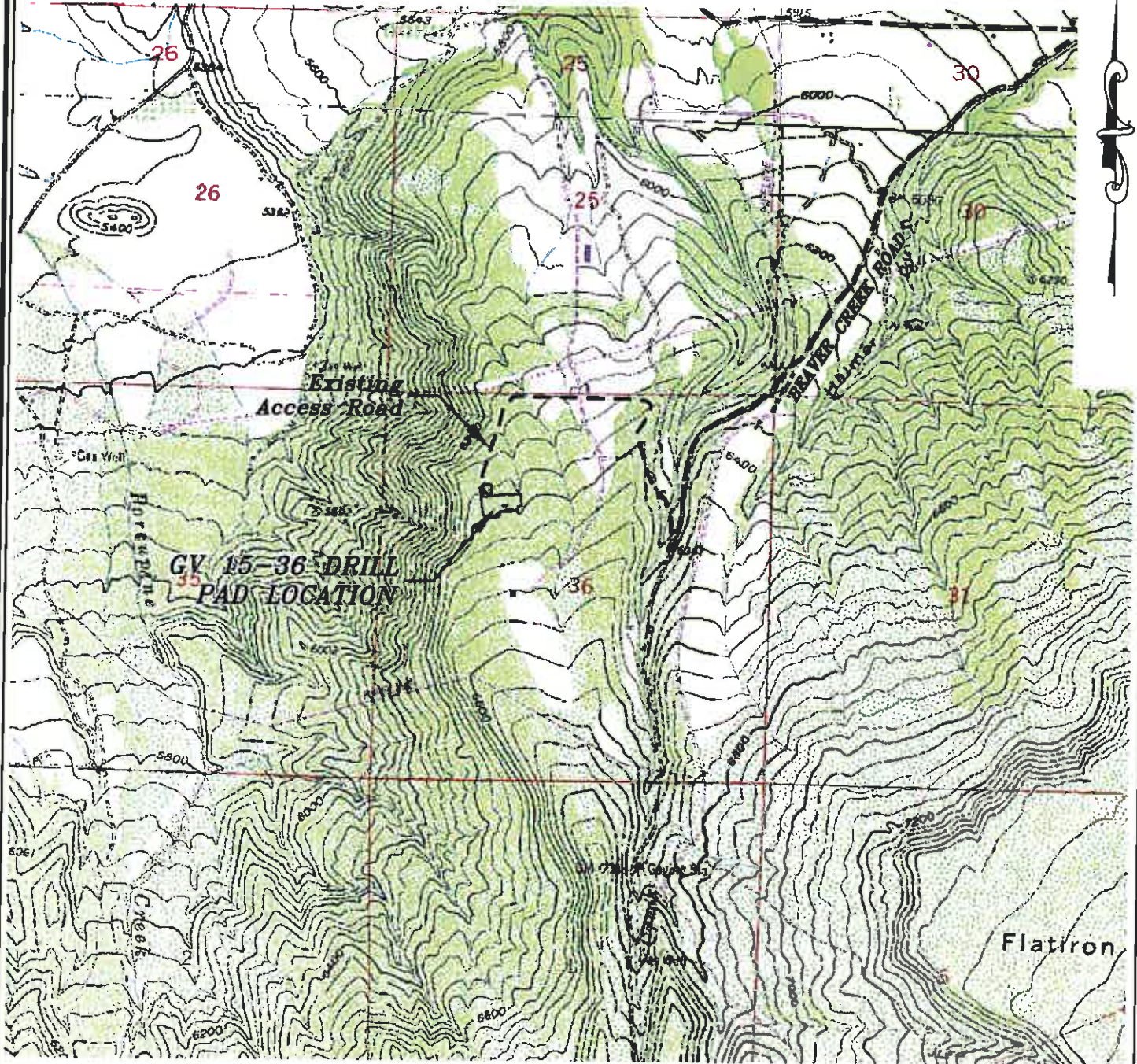


Section 36
T. 6 S., R 94 W



ACCESS DESCRIPTION:

FROM THE INTERSECTION OF STATE HIGHWAY 6 AND COUNTY ROAD 323 NORTH OF RULISON, PROCEED SOUTHERLY ALONG COUNTY ROAD 323 ± 1.1 MILES TO THE INTERSECTION WITH COUNTY ROAD 309, PROCEED LEFT IN AN EASTERLY DIRECTION ± 2.3 MILES TO THE INTERSECTION WITH COUNTY ROAD 320, PROCEED RIGHT IN AN EASTERLY DIRECTION ± 6.1 MILES TO THE INTERSECTION WITH COUNTY ROAD 317 (Beaver Creek Road), PROCEED RIGHT IN A SOUTHERLY DIRECTION ± 1.7 MILES TO THE INTERSECTION WITH A DIRT/GRAVEL ROAD, PROCEED RIGHT IN AN WESTERLY DIRECTION ± 1.0 MILES TO THE EXISTING GV 15-36 DRILL PAD LOCATION, AS SHOWN HEREON.

Construction Plan Prepared for:

Williams Williams Production, RMT

GV 15-36 Drill Pad - Plat 5
ACCESS ROAD MAP

SCALE: 1" = 2000'
DATE: 3/10/11
PLAT: 5 of 7
PROJECT: Williams Valley
DFT: cws

11111 Williams Valley, UT 84055
Phone: 801-225-2222
Fax: 801-225-2222

BOOKCLIFF
Survey Services, Inc.