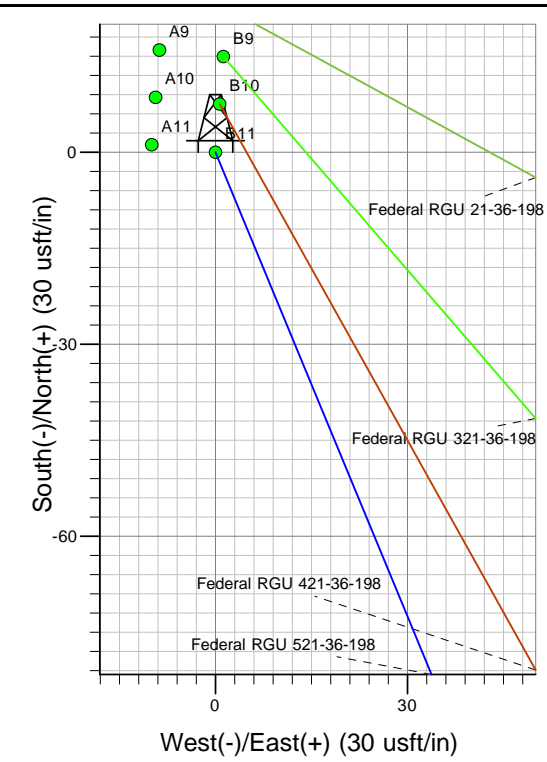
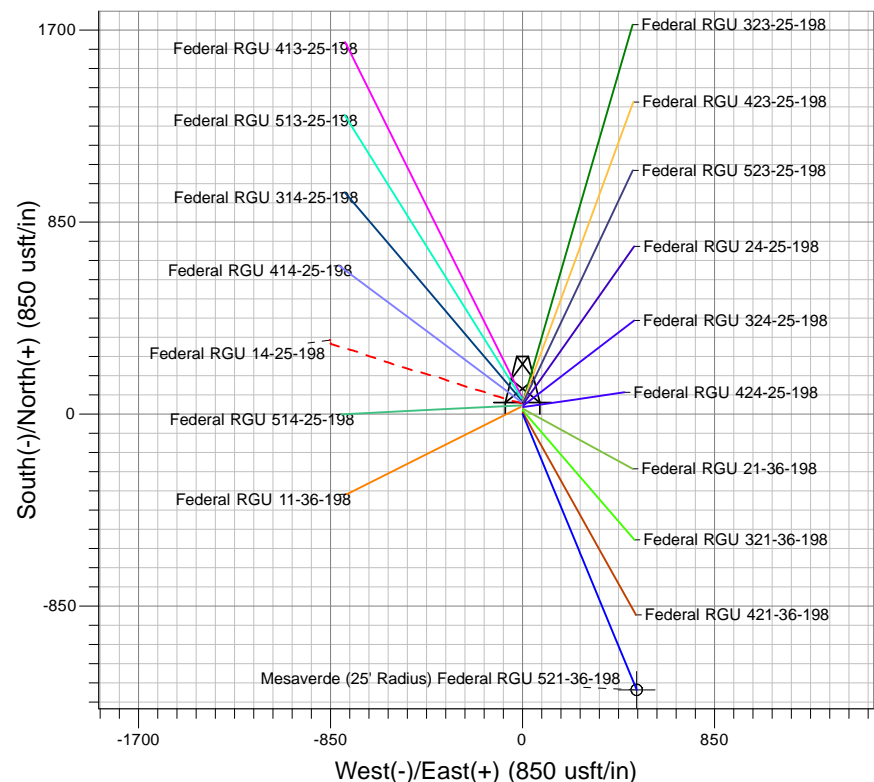
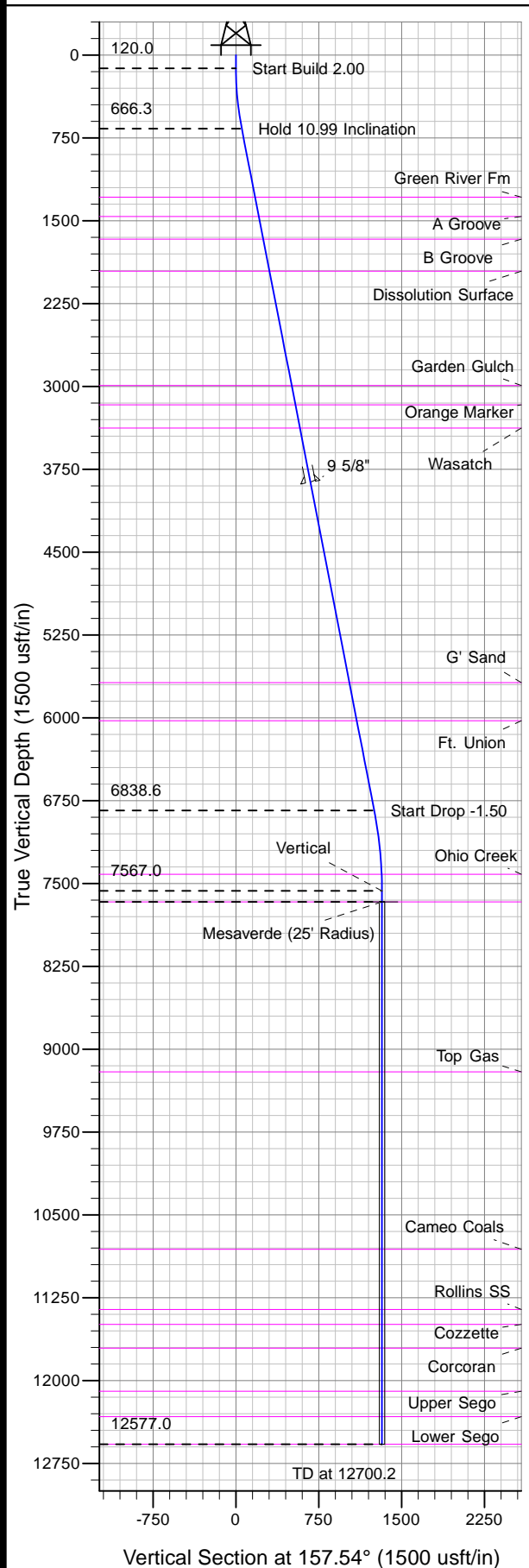




Well Name: Federal RGU 521-36-198
Surface Location: RGU 24-25-198 Pad
North American Datum 1983 , US State Plane 1983 , Colorado Central Zone
Ground Elevation: 6685.0
+N/-S +E/-W Northing Easting Latitude Longitude Slot
0.0 0.0 1775389.40 2201841.30 39° 55' 40.554 N 108° 20' 46.573 W B11
KELY BUSHING @ 6707.0usft (Frontier 10 (22' RKB) kjs)



Project: RG 25-01S-098W
Site: RGU 24-25-198 Pad
Well: Federal RGU 521-36-198
Plan #2 28Mar11 kjs

T Azimuths to True North
M Magnetic North: 11.10°
Magnetic Field
Strength: 52878.3snT
Dip Angle: 66.15°
Date: 3/21/2007
Model: IGRF2005-10

ANNOTATIONS									
TVD	MD	Inc	Azi	+N/-S	+E/-W	VSec	Departure	Annotation	
120.0	120.0	0.00	0.00	0.0	0.0	0.0	0.0	Start Build 2.00	
666.3	669.7	10.99	157.54	-48.6	20.1	52.6	52.6	Hold 10.99 Inclination	
6838.6	6957.4	10.99	157.54	-1156.7	478.1	1251.6	1251.6	Start Drop -1.50	
7567.0	7690.2	0.00	0.00	-1221.4	504.9	1321.7	1321.7	Vertical	
7667.0	7790.2	0.00	0.00	-1221.4	504.9	1321.7	1321.7	Mesaverde	
12577.0	12700.2	0.00	0.00	-1221.4	504.9	1321.7	1321.7	TD at 12700.2	