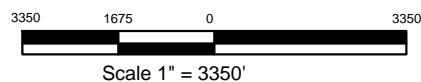


- Existing Access Road
- Proposed Access Road



**BONANZA CREEK ENERGY OPERATING COMPANY, LLC**



Drawing Title: **Access Road Map**

Drawing Date: 04/25/2011

Well/Location Name:

**Antelope G-31**

Surface Location:

Lot 2, Sec 31, T5N, R62W, 6th PM  
Lat. 40.35915 Long. -104.37113  
1514' FNL 1170' FWL

Drawn By: ksc