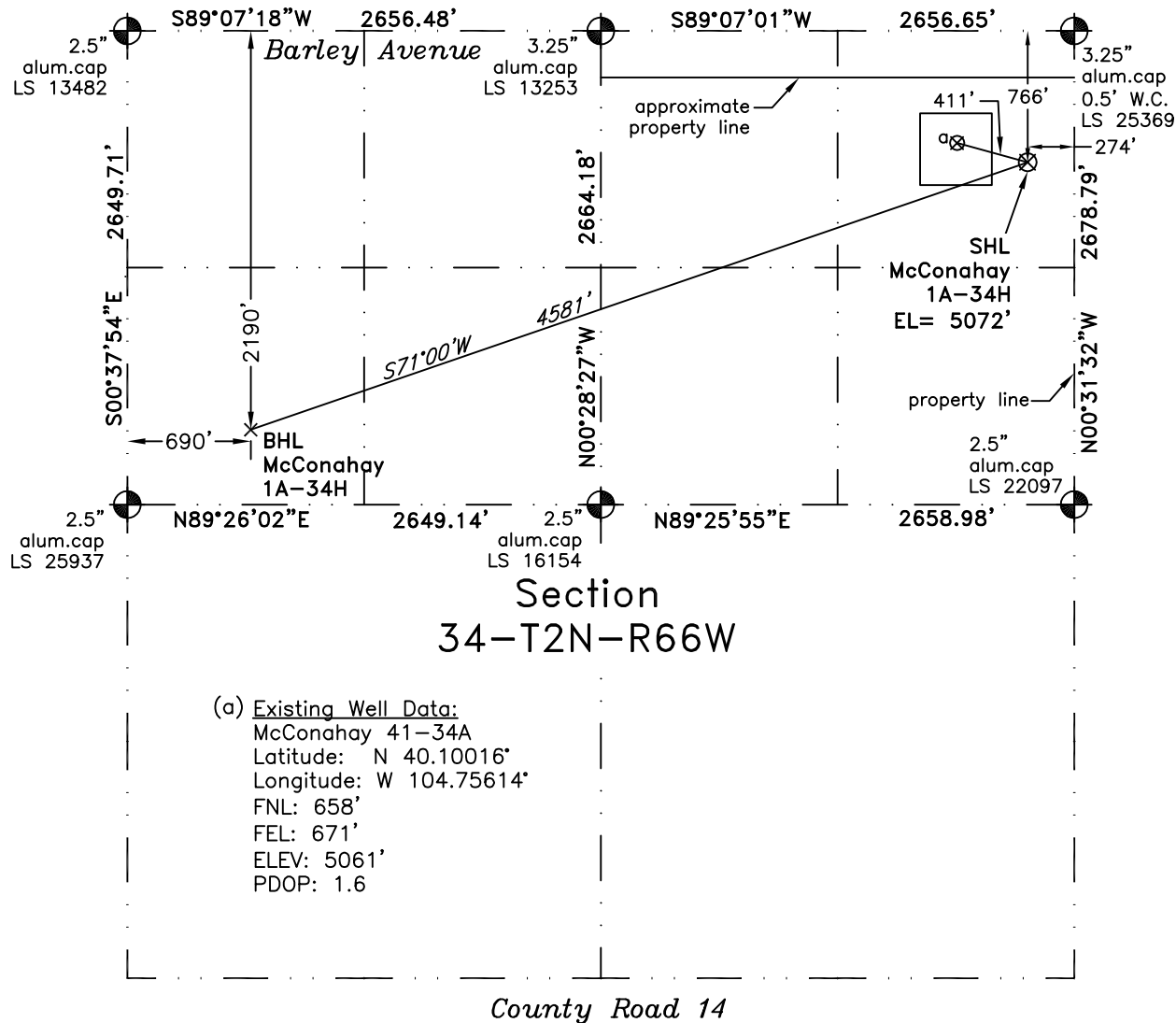


PLS Group, LLC
109 Coronado Ct. - Bldg. 7
Fort Collins, Colorado 80525

WELL LOCATION CERTIFICATE

THIS MAP DOES NOT
REPRESENT A BOUNDARY SURVEY



Scale 1" = 1000'
1000
approximate scale

LEGEND
— found survey monument
— calculated dimension
(c)

(a) Existing Well Data:
McConahay 41-34A
Latitude: N 40.10016°
Longitude: W 104.75614°
FNL: 658'
FEL: 671'
ELEV: 5061'
PDOP: 1.6

In accordance with a request from Dave Bale of EnCana Oil & Gas (USA) Inc., PLS Group, LLC has determined the location of the **McConahay 1A-34H** well site to be SHL 766' FNL and 274' FEL (BHL 2190' FNL and 690' FWL as measured at ninety (90) degrees from the section lines of Section 34, Township 2 North, Range 66 West of the 6th Principal Meridian, Weld County, Colorado.

Proposed Surface Hole Data:

Latitude: N 40.09988° BHL(40.09588°)
Longitude: W 104.75472° BHL(104.77025°)
PDOP: 1.2

Nearest: Building 856' north Above Ground Utility 302' east
Public Road 757' north Railroad 14,980' west
Property Line 274' east Well Window: SHL is 191' outside
Existing Well: McConahay 41-34A 411' northwest

Notes:

- 1) Bearings and distances based on NAD 83 Colorado North State Plane Coordinates using RTK GPS observations taken 3/1/11 by operator Craig Burke.
- 2) Conversion factor to ground (1.00027731).
- 3) Elevations based on NAVD 88 GPS heights and Geoid 2003 corrections.
- 4) See improvement map for visible improvements within 400 feet.
- 5) The surface use is agricultural field.

NOTICE: According to Colorado law you must commence any legal action based upon any defect in this W.L.C. within three years after you first discover such defect. In no event may any action based upon any defect in this W.L.C. be commenced more than ten years from this said date of the certification shown hereon.

I hereby certify that this Well Location Certificate was prepared by me or under my direct supervision on 3/2/2011 for and on behalf of EnCana Oil & Gas (USA) Inc. That it is not a Land Survey Plat or an Improvement Survey Plat and that it is not to be relied upon for establishment of fences, buildings, or other future improvement lines.

John Robert McGenee LS#38219
Well: McConahay 1A-34H WLC