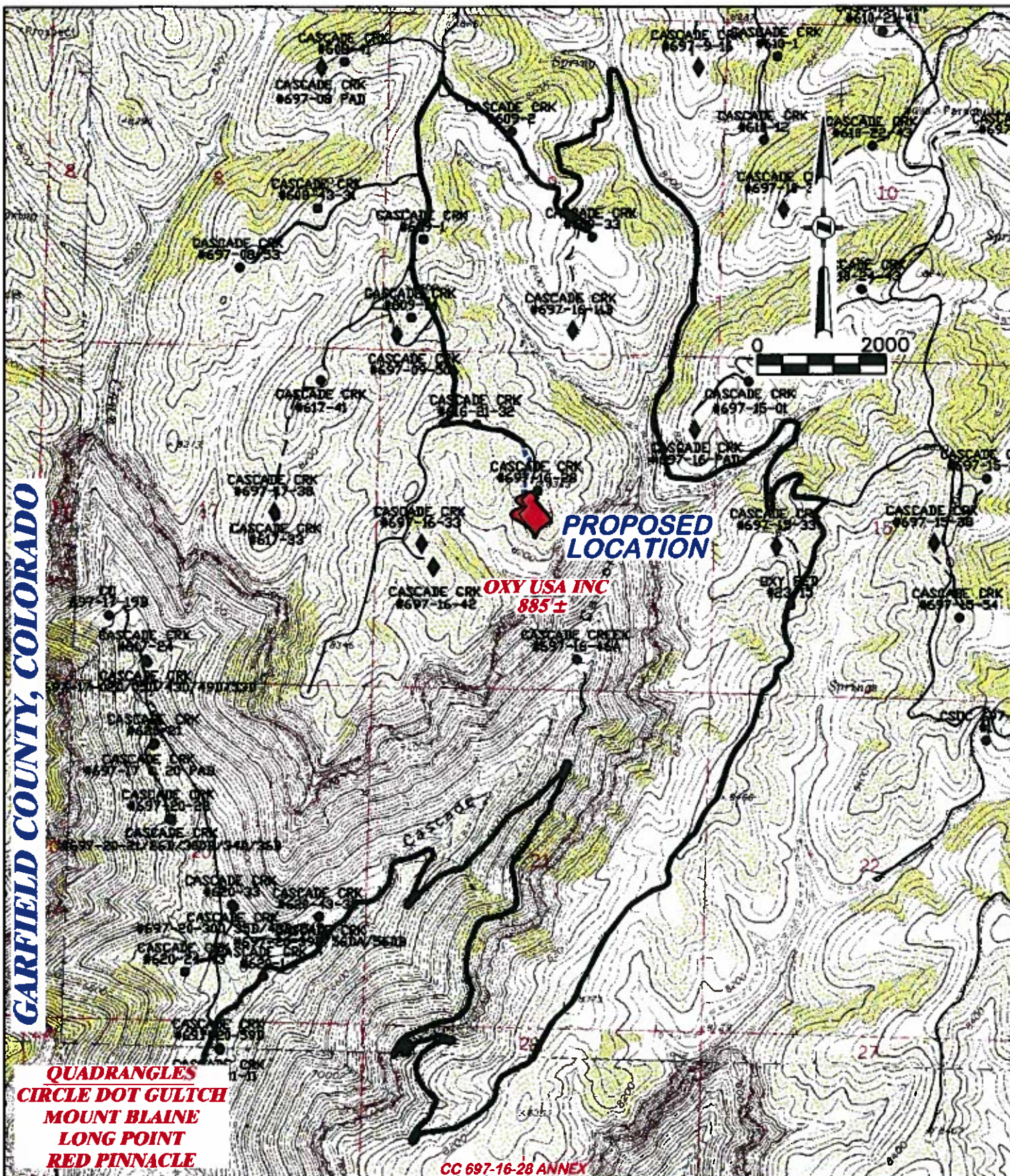



GARFIELD COUNTY, COLORADO



 DRG RIFFIN & ASSOCIATES, INC. (307) 382-8028 1414 ELK ST., ROCK SPRINGS, WY 82901		PROPOSED ACCESS MAP	
DRAWN: 2/17/11 - DEH		OXY USA WTP LP	
REVISD: N/A		CASCADE CREEK 697-16-11B2, 13A2, 15B, 15C, 21B, 23A, 23B, 29A, & 29B SENW SECTION 16, T. 6 S., R. 97 W., 6th P.M., GARFIELD COUNTY, COLORADO	
SCALE: 1" = 2000'		PROPOSED ACCESS LENGTH: 885±	
DRG JOB No. 11771		PROPOSED ACCESS EXISTING ROAD ———	
EXHIBIT/TOPO MAP 4			