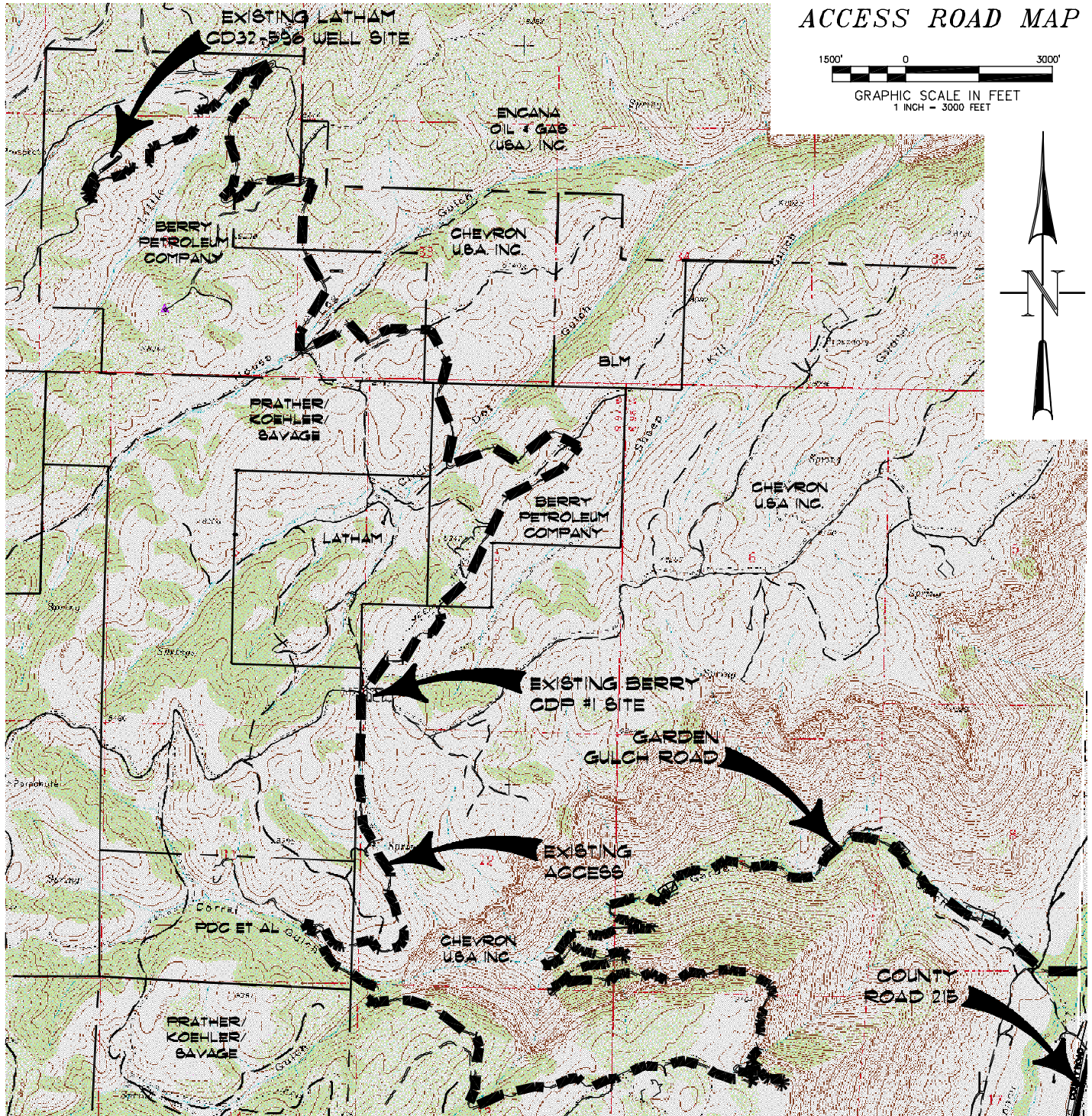


# ACCESS ROAD MAP



## ACCESS:

FROM THE GARDEN GULCH ACCESS ROAD OFF COUNTY ROAD 215, PROCEED IN A GENERAL WESTERLY DIRECTION APPROXIMATELY 9.2 MILES TO THE BERRY CDP #1 SITE, PROCEED FORWARD PAST THE BERRY CDP #1 SITE IN A GENERAL NORTHERLY DIRECTION APPROXIMATELY 5.0 MILES TO AN EXISTING WELL PAD ACCESS ROAD ON THE LEFT, PROCEED LEFT IN A GENERAL SOUTHWESTERLY DIRECTION APPROXIMATELY 0.9 MILES ALONG THE EXISTING WELL PAD ACCESS ROAD TO THE EXISTING LATHAM CD32-596 PAD ACCESS ROAD ON THE RIGHT, PROCEED RIGHT IN A GENERAL NORTHERLY DIRECTION ALONG THE EXISTING WELL PAD ACCESS ROAD APPROXIMATELY 0.1 MILES TO THE EXISTING LATHAM CD32-596 WELL PAD, BEING THE LOCATION.



CONSTRUCTION SURVEYS, INC.  
0012 SUNRISE BLVD.  
SILT, CO 81652  
(970)876-5753

Latham CD32-596  
NW1/4 NW1/4 OF SECTION 32, T. 5 S., R. 36 W.  
BERRY PETROLEUM COMPANY

SCALE: 1" = 3000'

SHEET 4 of 11