

NOTE: THE T-BONE RANCH DIRECTIONAL #1 LOCATION REFERENCE POINT WAS PERMANENTLY SET WITH A 5/8" REBAR AND WILL BE MAINTAINED THROUGH THE CONSTRUCTION/DRILLING OF THE ENTIRE WELL PAD.

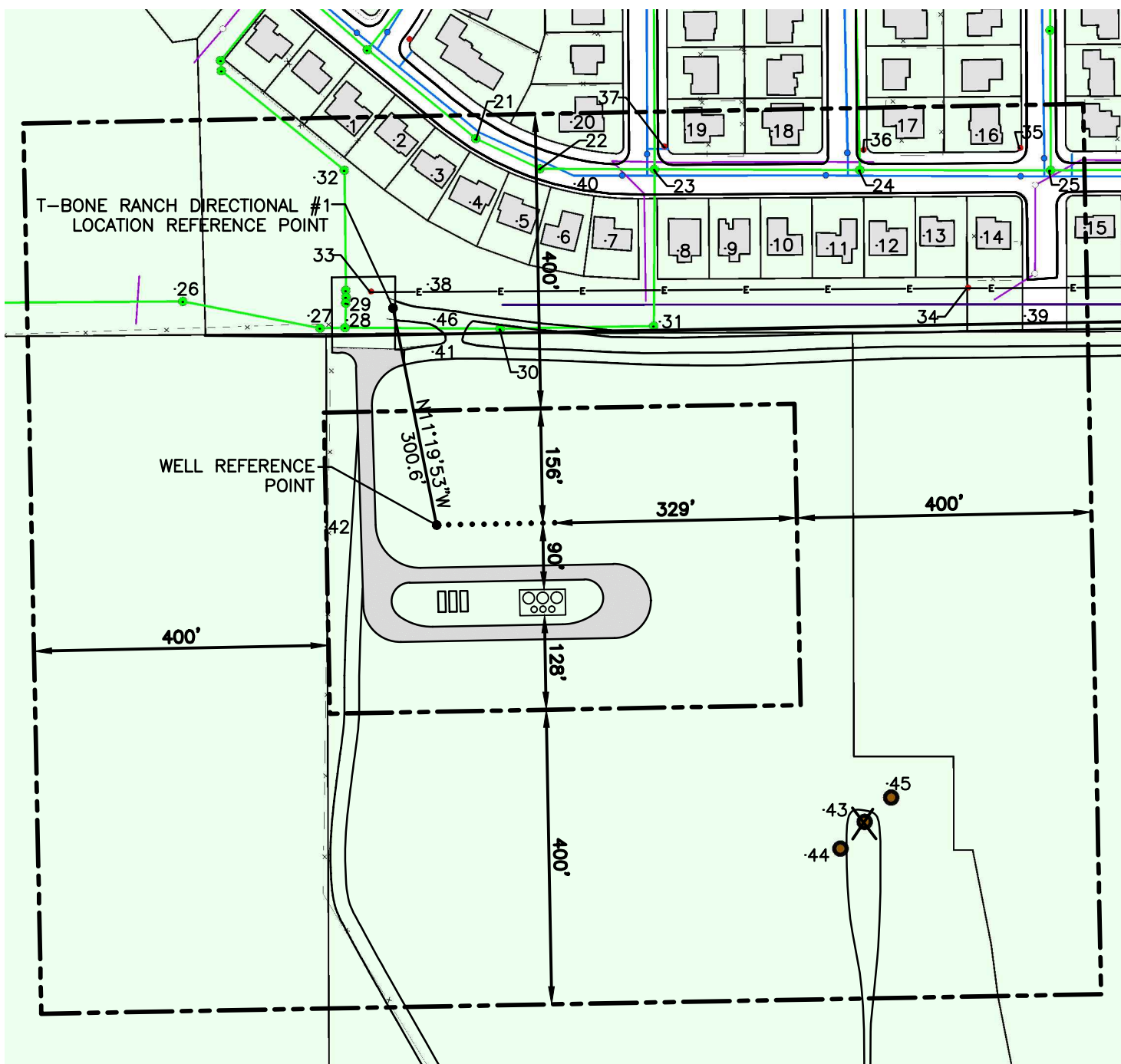
ALL DISTANCES AND BEARINGS REPORTED IN THE VISIBLE IMPROVEMENTS TABLE ARE MEASURED FROM THE WELL REFERENCE POINT.

LOCATION
SE/4, SECTION 22, T5N, R66W

VISIBLE IMPROVEMENTS TABLE			
#	DESCRIPTION	DISTANCE	BEARING
1	HOUSE	540'	NW
2	HOUSE	500'	N
3	HOUSE	455'	N
4	HOUSE	425'	N
5	HOUSE	415'	NE
6	HOUSE	405'	NE
7	HOUSE	430'	NE
8	HOUSE	480'	NE
9	HOUSE	530'	NE
10	HOUSE	575'	NE
11	HOUSE	630'	NE
12	HOUSE	690'	NE
13	HOUSE	755'	NE
14	HOUSE	820'	NE
15	HOUSE	945'	NE
16	HOUSE	890'	NE

VISIBLE IMPROVEMENTS TABLE			
#	DESCRIPTION	DISTANCE	BEARING
17	HOUSE	815'	NE
18	HOUSE	685'	NE
19	HOUSE	615'	NE
20	HOUSE	560'	NE
21	SS MANHOLE	525'	N
22	SS MANHOLE	500'	NE
23	SS MANHOLE	565'	NE
24	SS MANHOLE	750'	NE
25	SS MANHOLE	960'	NE
26	SS MANHOLE	460'	NW
27	SS MANHOLE	310'	NW
28	SS MANHOLE	295'	NW
29	SS LIFT STATION	330'	NW
30	SS MANHOLE	280'	NE
31	SS MANHOLE	400'	NE
32	SS MANHOLE	500'	NW

VISIBLE IMPROVEMENTS TABLE			
#	DESCRIPTION	DISTANCE	BEARING
33	POWER POLE	330'	NW
34	POWER POLE	790'	NE
35	LIGHT POLE	940'	NE
36	LIGHT POLE	770'	NE
37	LIGHT POLE	600'	NE
38	OVERHEAD POWER LINE	315'	N
39	50TH AVENUE	870'	NE
40	32ND STREET	495'	NE
41	DIRT ACCESS ROAD	220'	N
42	DIRT ACCESS ROAD	685'	SE
43	DIRT ACCESS ROAD	105'	W
44	O&G WELL TUSCANY 22-33-A2	700'	SE
45	O&G WELL TUSCANY 10-22-24	715'	SE
46	DIRT ACCESS ROAD	270'	N



LAMP RYNEARSON
& ASSOCIATES

4715 Innovation Dr.
Fort Collins, CO 80525
www.LRA-Inc.com
970.226.0342 | P
970.226.0879 | F

T-BONE RANCH
DIRECTIONAL #1
LOCATION
DRAWING

drawn by: SNC/EKM
surveyor: SNC/EKM
job number-tasks: 0210011.00
date: 1/31/2011
scale: 1"=200'
file name: T Bone Form 2A Exhibits.dwg