

# EOG Resources, Inc.

Weld County, CO

Sec. 16-T11N-R62W

Garden Creek 09-16H

Plan #1

Design: Sperry MWD Survey

## Sperry Drilling Services Standard Report

30 September, 2010

Well Coordinates: 578,957.97 N, 2,326,772.23 E (40° 54' 59.96" N, 104° 19' 03.72" W)

Ground Level: 5,150.00 ft

Local Coordinate Origin: Centered on Well Garden Creek 09-16H

Viewing Datum: RKB 21' @ 5171.00ft (SST 56)

TVDs to System: N

North Reference: True

Unit System: API - US Survey Feet - Custom

Geodetic Scale Factor Applied

Version: 2003.16 Build: 43!

**HALLIBURTON**

## Design Report for Garden Creek 09-16H - Sperry MWD Survey

Measured Depth (ft)	Inclination (°)	Azimuth (°)	Vertical Depth (ft)	+N/-S (ft)	+E/-W (ft)	Vertical Section (ft)	Dogleg Rate (°/100ft)
0.00	0.00	0.00	0.00	0.00	0.00	0.00	0.00
1,246.00	0.00	0.00	1,246.00	0.00	0.00	0.00	0.00
Surface Casing assumed vertical at 1,246'							
1,310.00	0.96	76.64	1,310.00	0.12	0.52	-0.23	1.50
First Sperry MWD Survey							
1,462.00	1.10	93.19	1,461.97	0.34	3.22	-1.75	0.22
1,747.00	0.90	97.28	1,746.93	-0.10	8.17	-5.18	0.07
2,033.00	1.05	109.79	2,032.89	-1.27	12.86	-9.03	0.09
2,318.00	1.00	106.91	2,317.84	-2.88	17.70	-13.30	0.03
2,603.00	0.71	87.55	2,602.81	-3.53	21.84	-16.39	0.14
2,888.00	0.83	64.50	2,887.79	-2.56	25.47	-17.91	0.12
3,173.00	0.55	46.00	3,172.77	-0.72	28.32	-18.25	0.12
3,458.00	0.74	57.66	3,457.75	1.21	30.86	-18.32	0.08
3,743.00	0.94	60.56	3,742.72	3.35	34.45	-18.90	0.07
4,028.00	0.57	68.74	4,027.69	5.01	37.80	-19.70	0.13
4,314.00	1.66	19.45	4,313.64	9.43	40.51	-17.93	0.48
4,599.00	2.01	27.64	4,598.49	17.75	44.20	-13.74	0.15
4,884.00	1.83	69.08	4,883.34	23.80	50.77	-13.12	0.48
5,170.00	2.10	84.93	5,169.18	25.90	60.26	-17.40	0.21
5,455.00	1.31	70.38	5,454.05	27.45	68.53	-21.35	0.31
5,740.00	0.51	87.10	5,739.01	28.61	72.86	-23.16	0.29
6,024.00	0.23	125.18	6,023.01	28.35	74.59	-24.44	0.13
6,308.00	0.39	143.76	6,307.00	27.24	75.63	-25.96	0.07
6,499.00	0.42	184.88	6,498.00	26.02	75.95	-27.11	0.15
6,531.00	0.30	167.30	6,530.00	25.82	75.96	-27.27	0.51
6,563.00	1.90	296.90	6,561.99	25.98	75.51	-26.87	6.57
6,594.00	6.13	310.43	6,592.91	27.28	73.79	-24.77	13.89
6,626.00	10.17	311.49	6,624.58	30.26	70.37	-20.31	12.63
6,658.00	13.44	316.89	6,655.90	34.85	65.71	-13.82	10.78
6,690.00	15.62	317.40	6,686.88	40.74	60.25	-5.81	6.82
6,721.00	19.42	319.05	6,716.43	47.71	54.05	3.51	12.36
6,753.00	23.82	320.55	6,746.17	56.72	46.45	15.29	13.86
6,785.00	28.23	320.49	6,774.92	67.55	37.53	29.32	13.78
6,817.00	32.69	320.93	6,802.50	80.11	27.26	45.54	13.95
6,849.00	36.94	321.58	6,828.76	94.35	15.83	63.81	13.33
6,880.00	39.06	321.39	6,853.19	109.29	3.95	82.89	6.85
6,912.00	42.40	321.02	6,877.44	125.56	-9.13	103.77	10.46
6,944.00	45.45	320.18	6,900.48	142.71	-23.23	125.96	9.70
6,976.00	49.74	319.51	6,922.06	160.76	-38.46	149.58	13.49
7,007.00	53.30	320.13	6,941.34	179.30	-54.12	173.83	11.59
7,039.00	57.53	320.47	6,959.50	199.56	-70.94	200.16	13.25
7,070.00	58.93	320.13	6,975.83	219.84	-87.77	226.51	4.61
7,102.00	60.46	320.17	6,991.97	241.05	-105.48	254.14	4.78
7,134.00	63.85	319.35	7,006.92	262.64	-123.75	282.41	10.83
7,166.00	67.77	318.02	7,020.03	284.56	-143.02	311.57	12.82
7,197.00	70.65	317.69	7,031.03	306.04	-162.47	340.49	9.34
7,229.00	75.86	317.36	7,040.25	328.64	-183.16	371.05	16.31
7,260.00	80.41	317.39	7,046.62	350.95	-203.69	401.31	14.68
7,285.00	82.40	317.74	7,050.35	369.20	-220.37	425.98	8.08
7,364.00	87.16	314.01	7,057.54	425.64	-275.13	504.25	7.64

## Design Report for Garden Creek 09-16H - Sperry MWD Survey

Measured Depth (ft)	Inclination (°)	Azimuth (°)	Vertical Depth (ft)	+N/-S (ft)	+E/-W (ft)	Vertical Section (ft)	Dogleg Rate (°/100ft)
7,396.00	87.10	314.27	7,059.14	447.89	-298.06	535.96	0.83
7,427.00	89.51	314.73	7,060.06	469.61	-320.16	566.72	7.91
7,459.00	91.82	314.93	7,059.69	492.17	-342.85	598.51	7.25
7,491.00	92.12	314.78	7,058.59	514.73	-365.53	630.28	1.05
7,523.00	92.56	314.11	7,057.28	537.11	-388.35	662.02	2.50
7,554.00	90.98	313.21	7,056.33	558.50	-410.77	692.73	5.86
7,586.00	90.65	313.00	7,055.87	580.37	-434.13	724.40	1.22
7,617.00	90.93	312.72	7,055.44	601.45	-456.85	755.05	1.28
7,649.00	89.88	314.04	7,055.22	623.43	-480.11	786.74	5.27
7,680.00	88.15	314.99	7,055.75	645.16	-502.21	817.51	6.37
7,712.00	88.52	316.32	7,056.68	668.03	-524.56	849.34	4.31
7,744.00	89.54	318.32	7,057.22	691.55	-546.25	881.26	7.02
7,776.00	89.54	320.91	7,057.48	715.93	-566.98	913.24	8.09
7,807.00	90.00	322.87	7,057.60	740.32	-586.11	944.23	6.49
7,839.00	90.18	323.00	7,057.55	765.85	-605.40	976.22	0.69
7,870.00	90.28	322.87	7,057.43	790.59	-624.09	1,007.21	0.53
7,902.00	90.55	323.11	7,057.20	816.14	-643.35	1,039.20	1.13
7,934.00	90.99	322.92	7,056.77	841.70	-662.60	1,071.18	1.50
7,965.00	91.48	323.24	7,056.10	866.48	-681.22	1,102.16	1.89
7,997.00	91.76	323.48	7,055.19	892.14	-700.30	1,134.13	1.15
8,029.00	92.04	322.14	7,054.13	917.62	-719.64	1,166.10	4.28
8,061.00	92.49	321.91	7,052.87	942.83	-739.31	1,198.07	1.58
8,093.00	90.52	321.86	7,052.03	967.99	-759.05	1,230.06	6.16
8,125.00	88.37	321.93	7,052.34	993.17	-778.80	1,262.05	6.72
8,156.00	88.18	321.88	7,053.27	1,017.56	-797.92	1,293.04	0.63
8,188.00	88.61	321.55	7,054.17	1,042.66	-817.74	1,325.02	1.69
8,219.00	88.55	321.39	7,054.93	1,066.91	-837.04	1,356.01	0.55
8,251.00	88.92	321.65	7,055.64	1,091.95	-856.95	1,388.00	1.41
8,282.00	89.51	322.42	7,056.07	1,116.39	-876.02	1,419.00	3.13
8,314.00	89.48	321.69	7,056.35	1,141.62	-895.69	1,451.00	2.28
8,346.00	88.89	321.24	7,056.80	1,166.65	-915.63	1,482.99	2.32
8,378.00	89.13	320.88	7,057.36	1,191.54	-935.73	1,514.99	1.35
8,410.00	91.20	321.26	7,057.26	1,216.43	-955.84	1,546.98	6.58
8,441.00	91.73	321.01	7,056.47	1,240.56	-975.29	1,577.97	1.89
8,473.00	92.10	321.60	7,055.40	1,265.52	-995.28	1,609.96	2.18
8,504.00	90.52	320.44	7,054.69	1,289.61	-1,014.78	1,640.95	6.32
8,536.00	90.71	321.04	7,054.35	1,314.39	-1,035.03	1,672.94	1.97
8,567.00	90.37	320.84	7,054.06	1,338.46	-1,054.56	1,703.94	1.27
8,599.00	89.57	319.90	7,054.07	1,363.10	-1,074.97	1,735.93	3.86
8,631.00	89.82	319.51	7,054.24	1,387.51	-1,095.66	1,767.92	1.45
8,663.00	90.22	319.38	7,054.23	1,411.82	-1,116.47	1,799.90	1.31
8,694.00	90.82	319.68	7,053.95	1,435.40	-1,136.59	1,830.89	2.16
8,726.00	91.36	319.47	7,053.34	1,459.76	-1,157.34	1,862.86	1.81
8,758.00	88.88	319.44	7,053.28	1,484.07	-1,178.14	1,894.84	7.75
8,790.00	89.10	319.95	7,053.84	1,508.47	-1,198.83	1,926.83	1.74
8,821.00	89.45	319.73	7,054.23	1,532.16	-1,218.82	1,957.81	1.33
8,852.00	90.25	320.27	7,054.31	1,555.91	-1,238.75	1,988.80	3.11
8,884.00	90.34	319.88	7,054.15	1,580.45	-1,259.29	2,020.79	1.25
8,916.00	90.80	319.62	7,053.83	1,604.87	-1,279.96	2,052.78	1.65
8,948.00	91.60	319.86	7,053.16	1,629.29	-1,300.64	2,084.76	2.61
8,979.00	88.92	319.72	7,053.02	1,652.96	-1,320.65	2,115.75	8.66

## Design Report for Garden Creek 09-16H - Sperry MWD Survey

Measured Depth (ft)	Inclination (°)	Azimuth (°)	Vertical Depth (ft)	+N/-S (ft)	+E/-W (ft)	Vertical Section (ft)	Dogleg Rate (°/100ft)
9,010.00	89.14	319.63	7,053.54	1,676.59	-1,340.70	2,146.73	0.77
9,042.00	89.63	319.93	7,053.89	1,701.02	-1,361.37	2,178.71	1.80
9,074.00	89.75	319.21	7,054.06	1,725.38	-1,382.12	2,210.70	2.28
9,106.00	89.23	318.60	7,054.35	1,749.49	-1,403.15	2,242.67	2.50
9,138.00	89.41	317.99	7,054.73	1,773.38	-1,424.44	2,274.62	1.99
9,170.00	89.81	317.76	7,054.94	1,797.12	-1,445.90	2,306.56	1.44
9,202.00	88.86	318.77	7,055.32	1,820.99	-1,467.20	2,338.51	4.33
9,234.00	90.06	319.68	7,055.62	1,845.22	-1,488.10	2,370.49	4.71
9,266.00	90.09	321.75	7,055.58	1,869.99	-1,508.36	2,402.48	6.47
9,297.00	89.48	321.09	7,055.69	1,894.22	-1,527.69	2,433.48	2.90
9,329.00	89.54	320.79	7,055.97	1,919.07	-1,547.86	2,465.48	0.96
9,361.00	89.20	321.27	7,056.32	1,943.95	-1,567.98	2,497.48	1.84
9,392.00	90.30	321.59	7,056.45	1,968.19	-1,587.31	2,528.48	3.70
9,424.00	89.26	320.25	7,056.58	1,993.03	-1,607.48	2,560.47	5.30
9,455.00	89.38	319.60	7,056.94	2,016.74	-1,627.44	2,591.46	2.13
9,487.00	89.32	319.10	7,057.31	2,041.02	-1,648.28	2,623.44	1.57
9,518.00	87.25	318.70	7,058.23	2,064.37	-1,668.65	2,654.40	6.80
9,550.00	87.22	318.66	7,059.78	2,088.38	-1,689.75	2,686.32	0.16
9,581.00	87.23	318.45	7,061.28	2,111.59	-1,710.25	2,717.25	0.68
9,613.00	87.59	318.33	7,062.72	2,135.49	-1,731.47	2,749.17	1.19
9,645.00	88.64	319.85	7,063.78	2,159.66	-1,752.42	2,781.13	5.77
9,677.00	88.95	319.99	7,064.45	2,184.14	-1,773.02	2,813.11	1.06
9,709.00	89.01	320.98	7,065.02	2,208.82	-1,793.37	2,845.10	3.10
9,740.00	90.52	322.42	7,065.15	2,233.14	-1,812.59	2,876.10	6.73
9,772.00	90.80	322.53	7,064.78	2,258.52	-1,832.08	2,908.09	0.94
9,804.00	88.77	322.59	7,064.90	2,283.93	-1,851.53	2,940.08	6.35
9,835.00	89.41	322.87	7,065.39	2,308.59	-1,870.30	2,971.07	2.25
9,867.00	89.54	323.30	7,065.68	2,334.18	-1,889.52	3,003.06	1.40
9,899.00	89.82	322.88	7,065.86	2,359.76	-1,908.74	3,035.04	1.58
9,930.00	88.67	323.07	7,066.27	2,384.51	-1,927.40	3,066.02	3.76
9,961.00	88.71	323.17	7,066.98	2,409.30	-1,946.00	3,097.00	0.35
9,993.00	89.01	323.14	7,067.62	2,434.90	-1,965.19	3,128.98	0.94
10,024.00	89.38	323.39	7,068.05	2,459.75	-1,983.73	3,159.96	1.44
10,056.00	89.51	323.34	7,068.36	2,485.42	-2,002.82	3,191.94	0.44
10,088.00	88.49	322.84	7,068.92	2,511.01	-2,022.03	3,223.92	3.55
10,119.00	88.64	321.96	7,069.70	2,535.56	-2,040.94	3,254.90	2.88
10,151.00	90.03	322.09	7,070.07	2,560.78	-2,060.63	3,286.90	4.36
10,182.00	90.77	322.39	7,069.85	2,585.29	-2,079.61	3,317.89	2.58
10,214.00	91.08	321.99	7,069.33	2,610.57	-2,099.23	3,349.89	1.58
10,246.00	91.57	322.01	7,068.59	2,635.78	-2,118.92	3,381.87	1.53
10,278.00	92.10	321.60	7,067.57	2,660.91	-2,138.70	3,413.86	2.09
10,309.00	92.90	321.62	7,066.22	2,685.19	-2,157.93	3,444.83	2.58
10,341.00	90.74	320.97	7,065.20	2,710.14	-2,177.93	3,476.81	7.05
10,373.00	91.11	320.78	7,064.69	2,734.97	-2,198.12	3,508.80	1.30
10,404.00	92.13	320.88	7,063.81	2,758.99	-2,217.69	3,539.79	3.31
10,436.00	90.12	320.37	7,063.18	2,783.72	-2,237.99	3,571.78	6.48
10,468.00	89.94	319.05	7,063.16	2,808.13	-2,258.68	3,603.76	4.16
10,500.00	88.55	318.70	7,063.59	2,832.23	-2,279.73	3,635.73	4.48
10,531.00	88.73	318.84	7,064.32	2,855.54	-2,300.15	3,666.69	0.74
10,563.00	88.80	319.01	7,065.01	2,879.66	-2,321.17	3,698.65	0.57
10,594.00	88.46	318.66	7,065.75	2,902.99	-2,341.57	3,729.62	1.57

## Design Report for Garden Creek 09-16H - Sperry MWD Survey

Measured Depth (ft)	Inclination (°)	Azimuth (°)	Vertical Depth (ft)	+N/-S (ft)	+E/-W (ft)	Vertical Section (ft)	Dogleg Rate (°/100ft)
10,626.00	88.64	318.14	7,066.56	2,926.91	-2,362.81	3,761.56	1.72
10,657.00	89.66	319.86	7,067.02	2,950.30	-2,383.15	3,792.53	6.45
10,689.00	89.66	319.68	7,067.21	2,974.73	-2,403.81	3,824.52	0.56
10,720.00	89.82	319.23	7,067.35	2,998.29	-2,423.96	3,855.50	1.54
10,752.00	90.59	319.14	7,067.24	3,022.50	-2,444.88	3,887.48	2.42
10,784.00	91.23	319.23	7,066.73	3,046.72	-2,465.79	3,919.45	2.02
10,816.00	90.06	317.92	7,066.37	3,070.71	-2,486.96	3,951.41	5.49
10,847.00	89.94	319.86	7,066.37	3,094.07	-2,507.34	3,982.38	6.27
10,878.00	90.37	320.10	7,066.29	3,117.81	-2,527.28	4,013.37	1.59
10,910.00	90.28	321.74	7,066.10	3,142.65	-2,547.45	4,045.37	5.13
10,942.00	90.40	322.03	7,065.91	3,167.82	-2,567.20	4,077.37	0.98
10,973.00	90.00	321.24	7,065.81	3,192.13	-2,586.44	4,108.37	2.86
11,005.00	88.80	319.38	7,066.14	3,216.75	-2,606.88	4,140.36	6.92
11,036.00	88.48	320.31	7,066.88	3,240.44	-2,626.86	4,171.34	3.17
11,068.00	88.33	318.43	7,067.77	3,264.71	-2,647.69	4,203.30	5.89
11,099.00	88.61	317.92	7,068.60	3,287.80	-2,668.35	4,234.24	1.88
11,131.00	88.33	319.96	7,069.45	3,311.92	-2,689.37	4,266.20	6.43
11,163.00	88.40	319.96	7,070.36	3,336.41	-2,709.94	4,298.18	0.22
11,195.00	89.48	321.58	7,070.95	3,361.19	-2,730.18	4,330.17	6.08
11,226.00	89.26	321.44	7,071.30	3,385.46	-2,749.47	4,361.17	0.84
11,258.00	90.68	322.66	7,071.31	3,410.69	-2,769.15	4,393.17	5.85
11,289.00	91.23	322.66	7,070.80	3,435.33	-2,787.95	4,424.15	1.77
11,321.00	90.59	322.11	7,070.29	3,460.68	-2,807.48	4,456.14	2.64
11,353.00	89.88	321.18	7,070.16	3,485.77	-2,827.33	4,488.14	3.66
11,385.00	90.65	321.37	7,070.01	3,510.74	-2,847.35	4,520.14	2.48
11,416.00	91.14	322.29	7,069.52	3,535.10	-2,866.51	4,551.14	3.36
11,448.00	91.51	322.07	7,068.78	3,560.37	-2,886.12	4,583.12	1.35
11,479.00	92.13	321.82	7,067.80	3,584.77	-2,905.22	4,614.11	2.16
11,511.00	92.74	321.90	7,066.44	3,609.92	-2,924.97	4,646.08	1.92
11,543.00	91.63	320.78	7,065.22	3,634.89	-2,944.94	4,678.05	4.93
11,575.00	90.15	320.86	7,064.72	3,659.69	-2,965.16	4,710.05	4.63
11,607.00	90.09	320.89	7,064.66	3,684.51	-2,985.35	4,742.05	0.21
11,638.00	89.78	320.42	7,064.69	3,708.49	-3,005.00	4,773.04	1.82
11,670.00	89.48	320.23	7,064.90	3,733.12	-3,025.43	4,805.04	1.11
11,701.00	89.69	320.18	7,065.12	3,756.93	-3,045.27	4,836.03	0.70
11,733.00	90.09	320.35	7,065.18	3,781.54	-3,065.73	4,868.02	1.36
11,765.00	89.57	319.80	7,065.28	3,806.08	-3,086.26	4,900.02	2.37
11,796.00	89.72	319.58	7,065.47	3,829.72	-3,106.32	4,931.00	0.86
11,828.00	89.72	319.19	7,065.63	3,854.01	-3,127.15	4,962.98	1.22
11,859.00	89.91	319.04	7,065.73	3,877.45	-3,147.44	4,993.96	0.78
11,891.00	89.81	319.11	7,065.81	3,901.63	-3,168.40	5,025.93	0.38
11,923.00	88.83	321.30	7,066.19	3,926.21	-3,188.88	5,057.92	7.50
11,954.00	88.77	321.45	7,066.83	3,950.42	-3,208.23	5,088.92	0.52
11,986.00	89.63	321.48	7,067.28	3,975.45	-3,228.16	5,120.91	2.69
12,018.00	90.86	322.10	7,067.14	4,000.59	-3,247.95	5,152.91	4.30
12,049.00	91.02	321.35	7,066.64	4,024.93	-3,267.15	5,183.91	2.47
12,081.00	91.23	321.00	7,066.01	4,049.85	-3,287.21	5,215.90	1.28
12,113.00	91.51	320.90	7,065.24	4,074.70	-3,307.37	5,247.89	0.93
12,144.00	91.85	320.69	7,064.33	4,098.71	-3,326.95	5,278.87	1.29
12,176.00	92.38	320.13	7,063.15	4,123.35	-3,347.33	5,310.85	2.41

## Design Report for Garden Creek 09-16H - Sperry MWD Survey

Measured Depth (ft)	Inclination (°)	Azimuth (°)	Vertical Depth (ft)	+N/-S (ft)	+E/-W (ft)	Vertical Section (ft)	Dogleg Rate (°/100ft)
12,207.00	91.08	320.15	7,062.22	4,147.14	-3,367.19	5,341.83	4.19
12,239.00	91.17	319.72	7,061.59	4,171.62	-3,387.78	5,373.81	1.37
12,271.00	91.88	320.04	7,060.74	4,196.08	-3,408.40	5,405.79	2.43
12,302.00	89.94	320.23	7,060.24	4,219.87	-3,428.26	5,436.78	6.29
12,334.00	89.45	318.97	7,060.41	4,244.24	-3,449.00	5,468.76	4.22
12,365.00	89.32	317.04	7,060.75	4,267.28	-3,469.74	5,499.70	6.24
12,397.00	89.17	315.30	7,061.17	4,290.36	-3,491.90	5,531.57	5.46
<b>Final Sperry MWD Survey</b>							
12,444.00	89.17	315.30	7,061.85	4,323.76	-3,524.96	5,578.30	0.00
<b>Straight Line Projection to TD</b>							

Design Annotations

Measured Depth (ft)	Vertical Depth (ft)	Local Coordinates		Comment
		+N/-S (ft)	+E/-W (ft)	
1,246.00	1,246.00	0.00	0.00	Surface Casing assumed vertical at 1,246'
1,310.00	1,310.00	0.12	0.52	First Sperry MWD Survey
12,397.00	7,061.17	4,290.36	-3,491.90	Final Sperry MWD Survey
12,444.00	7,061.85	4,323.76	-3,524.96	Straight Line Projection to TD

Vertical Section Information

Angle Type	Target	Azimuth (°)	Origin Type	Origin		Start TVD (ft)
				+N/-S (ft)	+E/-W (ft)	
Target	Garden Creek 09-16H Plan #1 BH Tgt	321.35	Slot	0.00	0.00	0.00

Survey tool program

From (ft)	To (ft)	Survey/Plan	Survey Tool
1,246.00	12,444.00	Sperry MWD Surveys	MWD



## Design Report for Garden Creek 09-16H - Sperry MWD Survey

### Targets

Target Name - hit/miss target - Shape	Dip Angle (°)	Dip Dir. (°)	TVD (ft)	+N/-S (ft)	+E/-W (ft)	Northing (ft)	Easting (ft)	Latitude	Longitude
Garden Creek 09-16	0.00	0.00	7,052.00	4,362.20	-3,488.01	583,273.38	2,323,226.28	40° 55' 43.060 N	104° 19' 49.160 W
- actual wellpath misses target center by 54.21ft at 12444.00ft MD (7061.85 TVD, 4323.76 N, -3524.96 E)									
- Point									
Garden Creek 09-16	0.00	0.00	0.00	0.00	0.00	578,957.97	2,326,772.23	40° 54' 59.960 N	104° 19' 3.720 W
- actual wellpath hits target center									
- Polygon									
Point 1				16.29	4,112.08	583,070.00	2,326,733.69		
Point 2				-1.76	61.54	579,019.48	2,326,769.65		
Point 3				-3,990.54	376.47	579,281.21	2,322,776.93		
Point 4				-3,930.40	4,399.13	583,304.41	2,322,783.43		
Garden Creek 09-16	0.00	0.00	0.00	0.00	0.00	578,957.97	2,326,772.23	40° 54' 59.960 N	104° 19' 3.720 W
- actual wellpath hits target center									
- Polygon									
Point 1				616.29	4,712.08	583,677.96	2,327,325.66		
Point 2				598.24	-538.46	578,427.52	2,327,377.61		
Point 3				-4,590.54	-223.53	578,673.25	2,322,184.97		
Point 4				-4,530.40	5,029.13	583,926.37	2,322,175.07		

**North Reference Sheet for Sec. 16-T11N-R62W - Garden Creek 09-16H - Plan #1**

All data is in US Feet unless otherwise stated. Directions and Coordinates are relative to True North Reference.

Vertical Depths are relative to RKB 21' @ 5171.00ft (SST 56). Northing and Easting are relative to Garden Creek 09-16H

Coordinate System is US State Plane 1927 (Exact solution), Colorado North 501 using datum NAD 1927 (NADCON CONUS), ellipsoid Clarke 1866

Projection method is Lambert Conformal Conic (2 parallel)

Central Meridian is 105° 30' 0.000 W°, Longitude Origin: 0° 0' 0.000 E°, Latitude Origin: 40° 47' 0.000 N°

False Easting: 2,000,000.00ft, False Northing: 0.00ft, Scale Reduction: 1.00002435

Grid Coordinates of Well: 578,957.97 ft N, 2,326,772.23 ft E

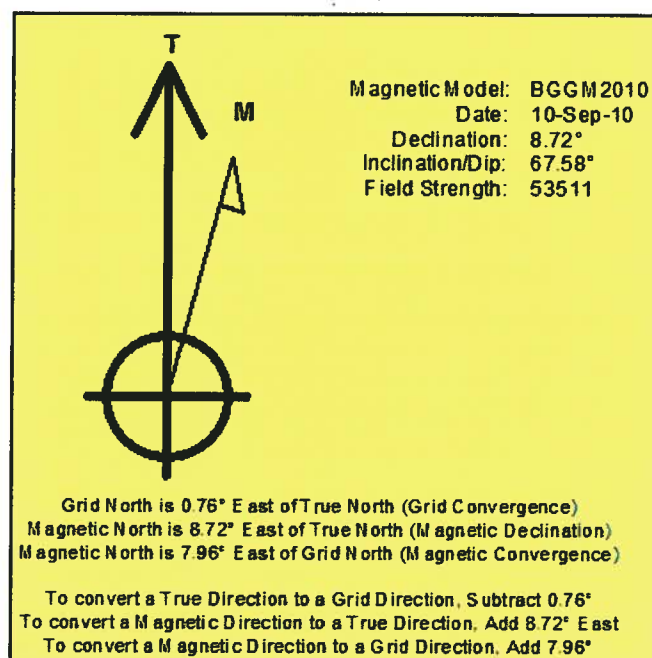
Geographical Coordinates of Well: 40° 54' 59.96" N, 104° 19' 03.72" W

Grid Convergence at Surface is: 0.76°

Based upon Minimum Curvature type calculations, at a Measured Depth of 12,444.00ft

the Bottom Hole Displacement is 5,578.55ft in the Direction of 320.81° (True).

Magnetic Convergence at surface is: -7.96° (10 September 2010, , BGGM2010)



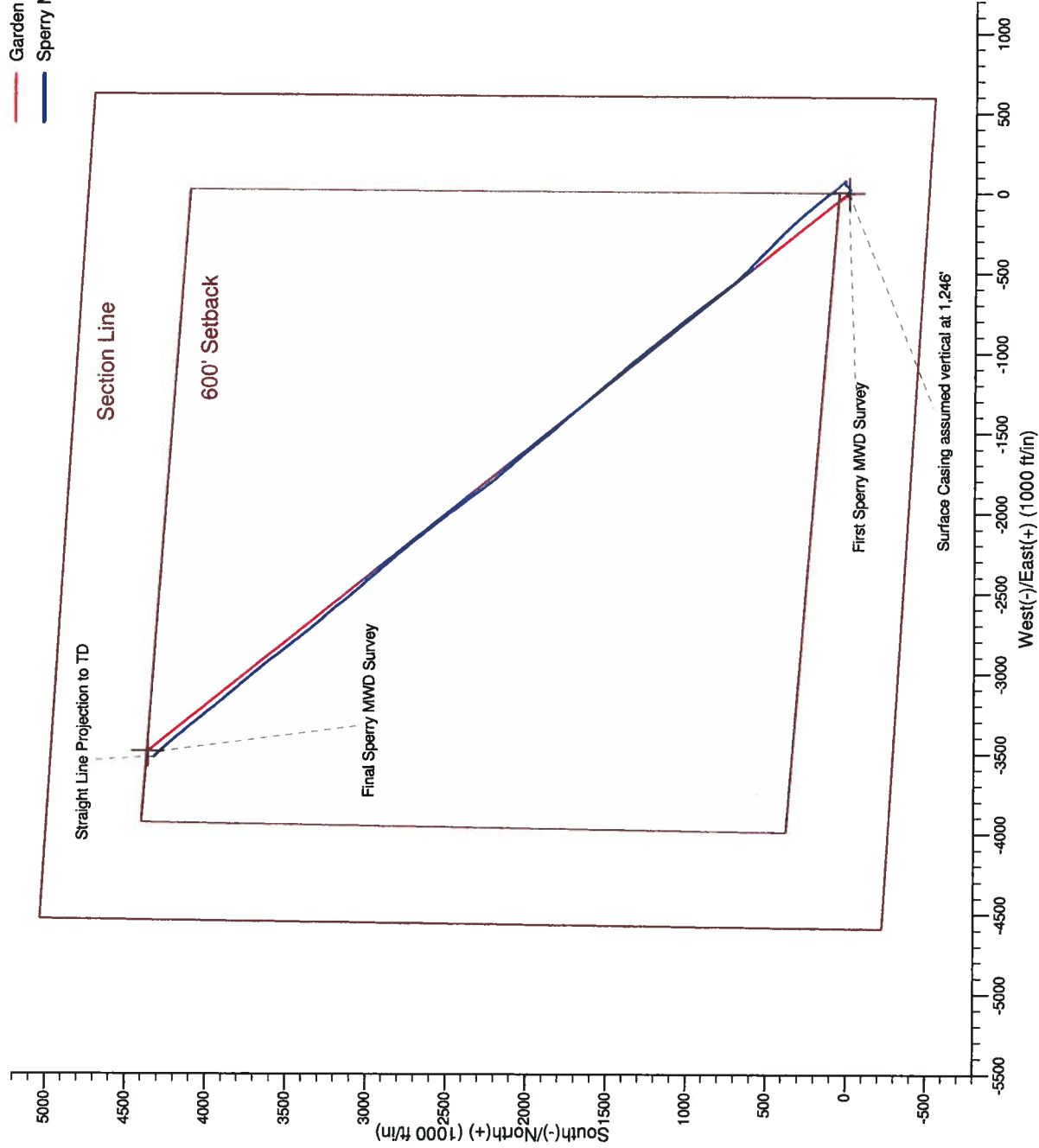


Project: Weld County, CO  
Site: Sec. 16-T11N-R62W  
Well: Garden Creek 09-16H

# EOG Resources, Inc.

## LEGEND

- Garden Creek 09-16H, Plan #1, Plan #1 Proposal Vd
- Sperry MWD Survey



Project: Weld County, CO  
Site: Sec. 16-T11N-R62W  
Well: Garden Creek 09-16H

# EOG Resources, Inc.

