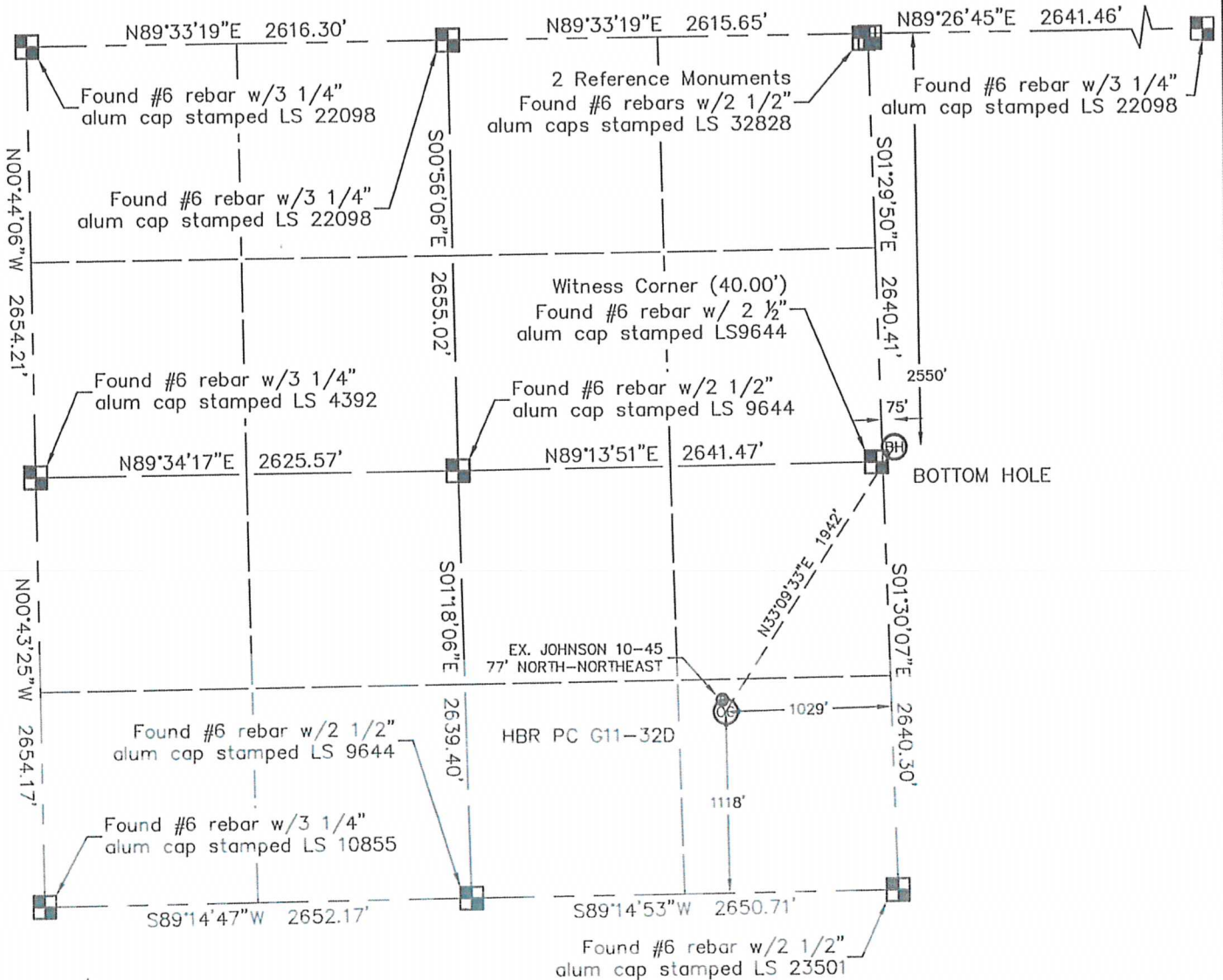


KING SURVEYORS, INC. 650 E. GARDEN DR. WINDSOR, CO 80550

WELL LOCATION CERTIFICATE

THIS MAP DOES NOT REPRESENT A BOUNDARY SURVEY

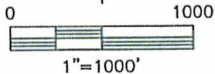
SECTION: 10
TOWNSHIP: 4N
RANGE: 65W



In accordance with a request from BEAU FRITZ with NOBLE ENERGY INC.

King Surveyors Inc. has determined the surface location of the HBR PC G11-32D to be 1118' from the South line and 1029' from the East line, as measured at right angles, from the section lines of Section 10, Township 4 North, Range 65 West and the bottom hole to be 2550' from the North line and 75' from the West line, as measured at right angles, from the section lines of Section 11, Township 4 North, Range 65 West of the Sixth Principal Meridian, County of Weld, State of Colorado.

I hereby state that this Well Location Certificate was prepared by me, or under my direct supervision, that the fieldwork was completed on 6-28-2010, for and on behalf of NOBLE ENERGY INC. That this is not a Land Survey Plat or an Improvement Survey Plat, and that it is not to be relied upon for establishment of fence, building, or other future improvement lines.





NOTE:

- 1) Bearings shown are Grid Bearings of the Colorado State Plane Coordinate System, North Zone, North American Datum 1983/2007. The lineal dimensions as contained herein are based upon the "U.S. Survey Foot."
- 2) Ground elevations are based on an observed GPS elevation (NAVD 1988 DATUM).
- 3) NEAREST EXISTING WELL: JOHNSON 10-45 77' NORTH-NORTHEAST
- 4) IMPROVEMENTS: See VISIBLE IMPROVEMENTS exhibit for all visible improvements within 400' of well head.
- 5) SURFACE USE: PASTURE

NOTE

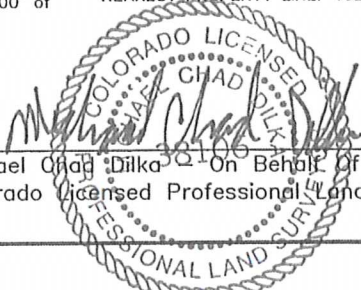
According to Colorado law, you must commence any legal action based upon any defect in this W.L.C. within three years after you discover such defect. In no event, may any action based upon any defect in this survey be commenced more than ten years after the date of the certificate shown hereon. (13-80-105 C.R.S.)

LEGEND

-  = ALIQUOT MONUMENT AS DESCRIBED
-  = CALCULATED POSITION

SURFACE LOCATION
LATITUDE: 40.32282°N
LONGITUDE: 104.64334°W
PDOP: 1.2
ELEV: 4680'
1/4, 1/4: SE1/4 SE1/4
NEAREST PROPERTY LINE: 1029' EAST

BOTTOM HOLE
LATITUDE: 40.32725°N
LONGITUDE: 104.63948°W

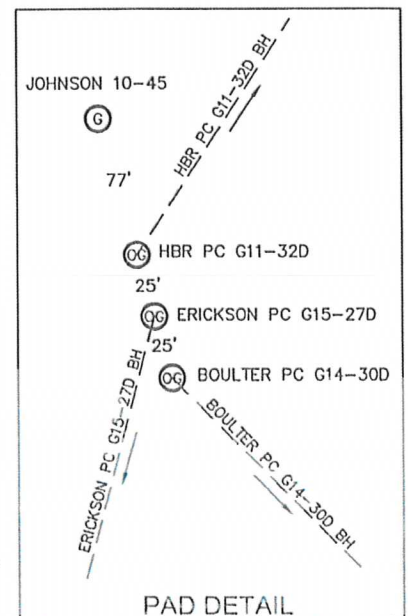
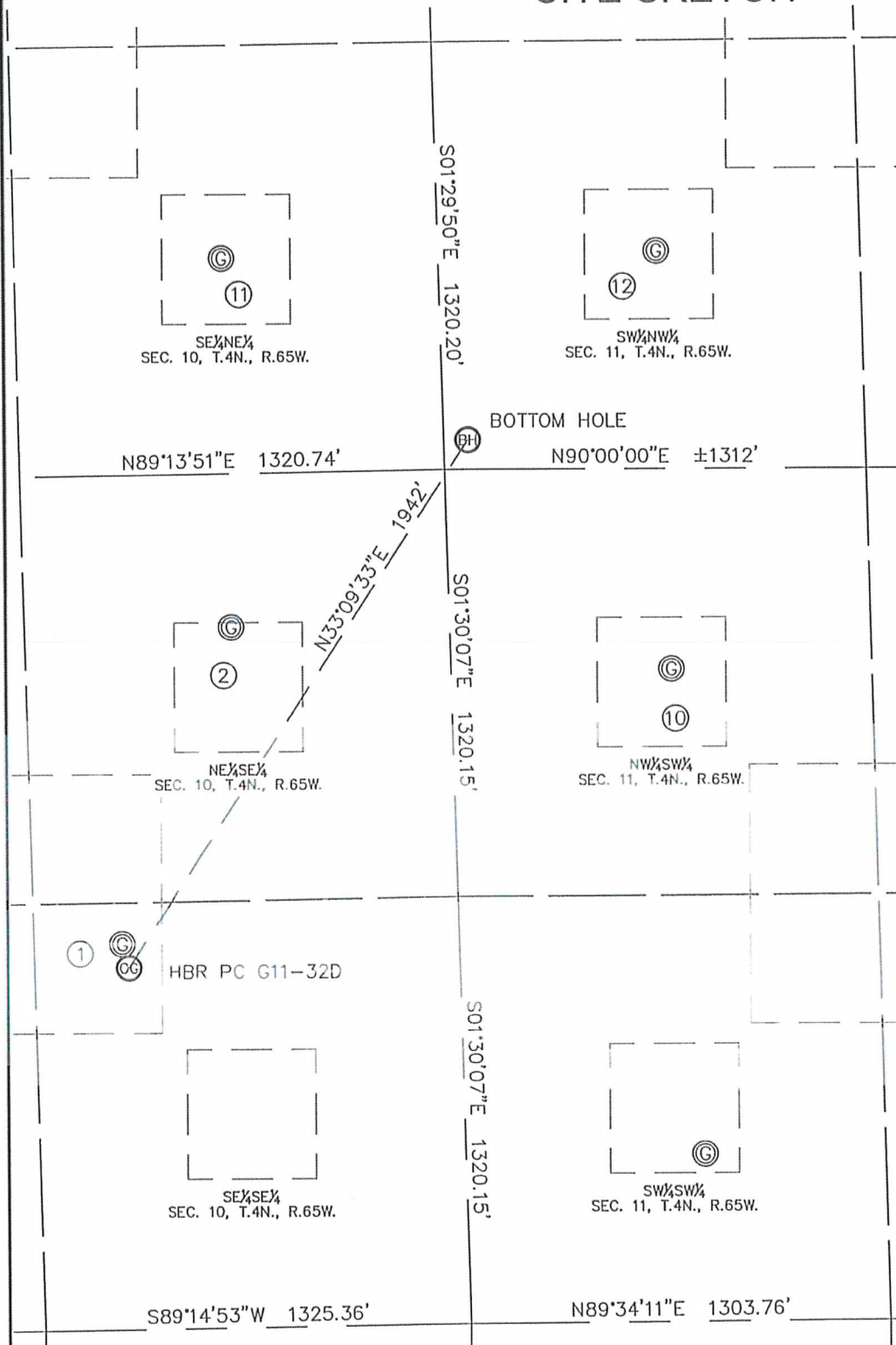

Michael Chad Dilka On Behalf of King Surveyors, Inc.
Colorado Licensed Professional Land Surveyor #38106
PROJECT#: 2010250
7/9/2010

KING SURVEYORS, INC.

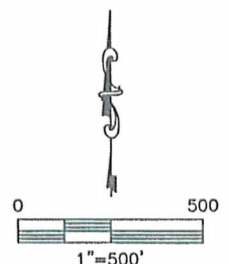
650 E. GARDEN DR. WINDSOR, CO 80550

SITE SKETCH

SECTION: 10
TOWNSHIP: 4N
RANGE: 65W



- | | | | | |
|--|---|--|---|---|
| ① JOHNSON 10-45 SE1/4 SE1/4 SEC 10 1193' FSL 1048' FEL LAT-40.32302°N LONG-104.64341°W PDOP: 1.3 ELEV: 4680' | ② BOULTER 10-41 NE1/4 SE1/4 SEC 10 2166' FSL 678' FEL LAT-40.32570°N LONG-104.64214°W PDOP: 1.3 ELEV: 4677' | ⑩ BOULTER 11-1 NW1/4 SW1/4 SEC 11 2017' FSL 687' FWL LAT-40.32529°N LONG-104.63724°W PDOP: 3.7 ELEV: 4678' | ⑪ HSR-MENK 8-10 SE1/4 NE1/4 SEC 10 1979' FNL 672' FEL LAT-40.32882°N LONG-104.64219°W PDOP: 2.9 ELEV: 4676' | ⑫ HANSCOME 11-1 SW1/4 NW1/4 SEC 11 1974' FNL 680' FWL LAT-40.32883°N LONG-104.63734°W PDOP: 1.2 ELEV: 4676' |
|--|---|--|---|---|



PROJECT#: 2010250