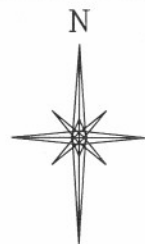
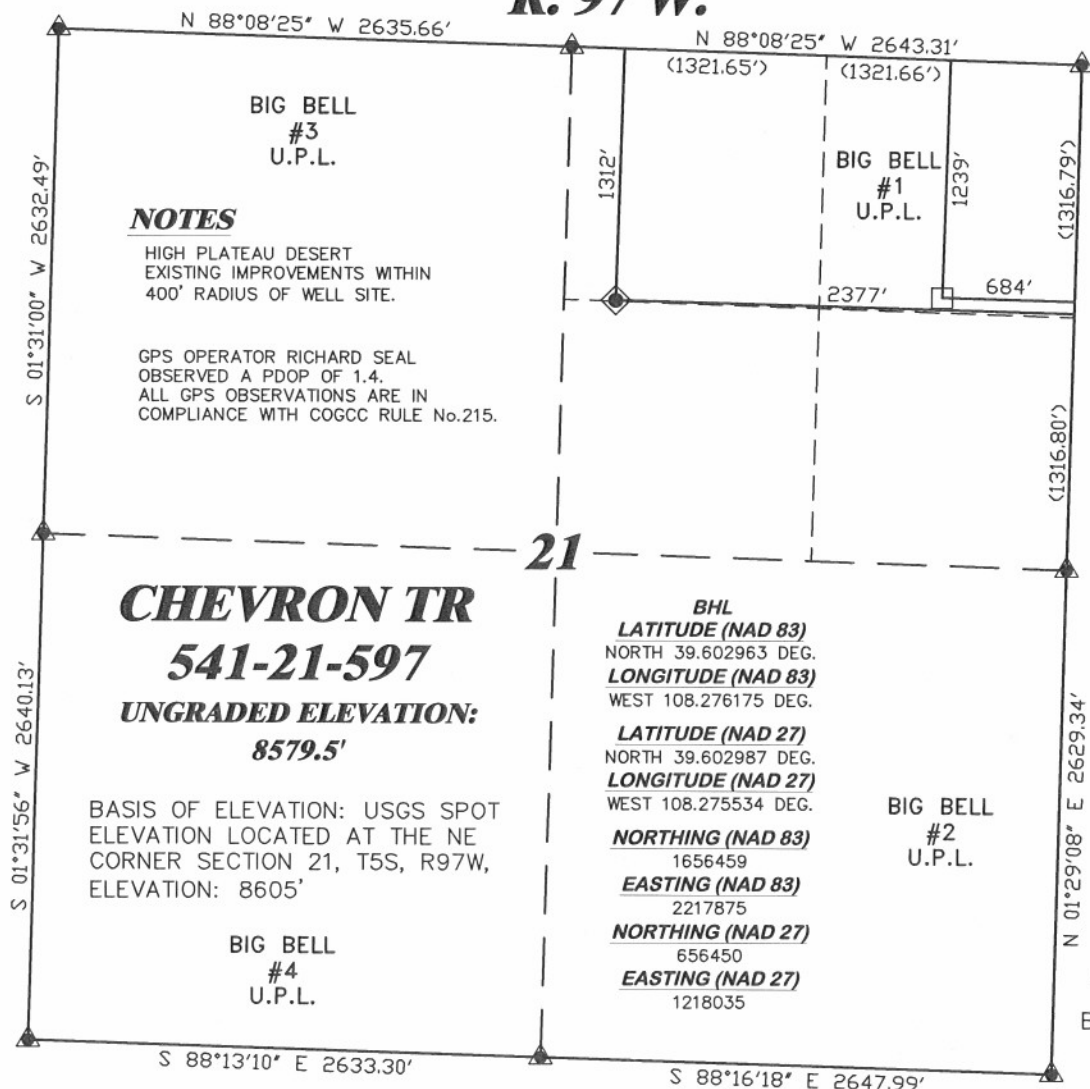


R. 97 W.



SCALE 1" = 1000'

T. 5 S.

LATITUDE (NAD 83)
NORTH 39.602772 DEG.
LONGITUDE (NAD 83)
WEST 108.282183 DEG.

LATITUDE (NAD 27)
NORTH 39.602796 DEG.
LONGITUDE (NAD 27)
WEST 108.281542 DEG.

NORTHING (NAD 83)
1656441.23
EASTING (NAD 83)
2216180.11

NORTHING (NAD 27)
656431.71
EASTING (NAD 27)
1216340.53

BASIS OF BEARING/DATUM
SPCS CO CENTRAL NAD 27
BASED ON NGS TRIANGULATION
STATION "SHALE"



SURVEYOR'S STATEMENT

I, CLEMENT R. WILLIAMS, OF ROCK SPRINGS, WYOMING, HEREBY STATE: THIS MAP WAS MADE FROM NOTES TAKEN DURING AN ACTUAL FIELD SURVEY DONE UNDER MY DIRECT SUPERVISION ON AUGUST 25, 2009 AND THAT THIS PLAT CORRECTLY SHOWS THE LOCATION OF CHEVRON TR 541-21-597 AS STAKED ON THE GROUND.

LEGEND

- ◆ WELL LOCATION
- BOTTOM HOLE LOC. (APPROX)
- FOUND MONUMENT
- ▲ PREVIOUSLY FOUND MONUMENT (1923 GLO B.C.)



CHEVRON TR 32-21-597 PAD

DRG RIFFIN & ASSOCIATES, INC.
(307) 362-5028 1414 ELK ST., ROCK SPRINGS, WY 82901

DRAWN: 11/9/09 - MMM

SCALE: 1" = 1000'

REVISED: NA

DRG JOB No. 12855-5

EXHIBIT 1

**PLAT OF DRILLING LOCATION
FOR
WILLIAMS PRODUCTION RMT COMPANY**
**1312' F/NL & 2377' F/EL, SECTION 21,
T. 5 S., R. 97 W., 6th P.M.
GARFIELD COUNTY, COLORADO**