

Encana OIL & GAS (USA) INC.

ADDENDUM TO LEGAL PLAT FOR

WELL PAD H17 595

SECTION 17, T5S, R95W, 6th P.M.

SE 1/4 NE 1/4



SCALE: 1" = 60'

DATE: 10-08-10

DRAWN BY: D.R.B.

Revised: 10-19-10 D.R.B.

SWMP LEGEND:

SCE - STABILIZED  
CONSTRUCTION  
ENTRANCE

ST - SEDIMENT TRAP

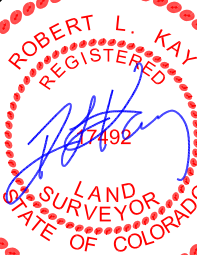
Install 60" Culvert

Proposed Pipeline

Access Road

Existing Drainage

Existing Road



Tank

Production  
Equipment Area  
(125'x75')

3-Phase Meter Houses

N03°49'44"W

Flare Stack &  
Flare Ditch

Cement Pit

Steel Cutting  
Bin  
(4'x5'x10'x12')

108'

153'

95'

166'

68'

81'

N86°10'16"E

29'

51'

167'

S44°E 237'

S38°E 171'

148'

S02°W 301'

141'

S53°W 360'

112'

S57°W 587'

252'

Proposed Pipeline

Existing Drainage

Existing Road

SURFACE USE OF LOCATION IS  
GRAZING, VEGETATION CONSISTS  
MAINLY OF SAGEBRUSH, OAK  
BRUSH & NATIVE GRASSES.

UINTAH ENGINEERING & LAND SURVEYING

85 So. 200 East \* Vernal, Utah 84078 \* (435) 789-1017

Encana OIL & GAS (USA) INC.

WELL PAD INTERFERENCE PLAT

WELL PAD H17 595

SECTION 17, T5S, R95W, 6th P.M.

SE 1/4 NE 1/4

60' 30' 0' 60'



SCALE

Sheet 2 of 11

SCALE: 1" = 60'

DATE: 10-08-10

DRAWN BY: D.R.B.

Revised: 10-19-10 D.R.B.

8'x8' (Typ.)

EMF07C-16  
EMF10B-16

EMF06D-16  
EMF11A-16

EMF11B-16  
EMF12A-16

EMF12B-16  
EMF12C-16

EMF13C-16  
EMF13B-16

EMF09B-17  
EMF16A-17

N86°10'16"E

S77°16'13"E 3325.88' (TO BOTTOM HOLE)  
S76°17'38"E 4138.16' (TO BOTTOM HOLE)

S70°54'09"E 3985.59' (TO BOTTOM HOLE)  
S68°05'26"E 4524.34' (TO BOTTOM HOLE)  
S66°07'10"E 2576.92' (TO BOTTOM HOLE)  
S65°49'10"E 4560.91' (TO BOTTOM HOLE)  
S58°27'13"E 2701.03' (TO BOTTOM HOLE)  
S55°43'06"E 4589.25' (TO BOTTOM HOLE)  
S55°38'39"E 2996.80' (TO BOTTOM HOLE)  
S56°26'35"E 3653.84' (TO BOTTOM HOLE)  
S53°30'46"E 2030.09' (TO BOTTOM HOLE)

S44°36'24"E 3080.05' (TO BOTTOM HOLE)

S31°01'31"E 1743.01' (TO BOTTOM HOLE)  
S30°50'40"E 2157.47' (TO BOTTOM HOLE)  
S29°47'27"E 2702.95' (TO BOTTOM HOLE)

S25°14'49"E 2776.49' (TO BOTTOM HOLE)

S21°55'18"E 3464.73' (TO BOTTOM HOLE)

S15°01'31"E 2966.16' (TO BOTTOM HOLE)  
S11°02'55"E 2017.36' (TO BOTTOM HOLE)

S09°58'22"E 2233.84' (TO BOTTOM HOLE)  
S10°52'59"E 1671.06' (TO BOTTOM HOLE)

S01°57'01"E 2640.03' (TO BOTTOM HOLE)

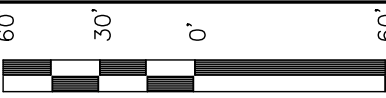




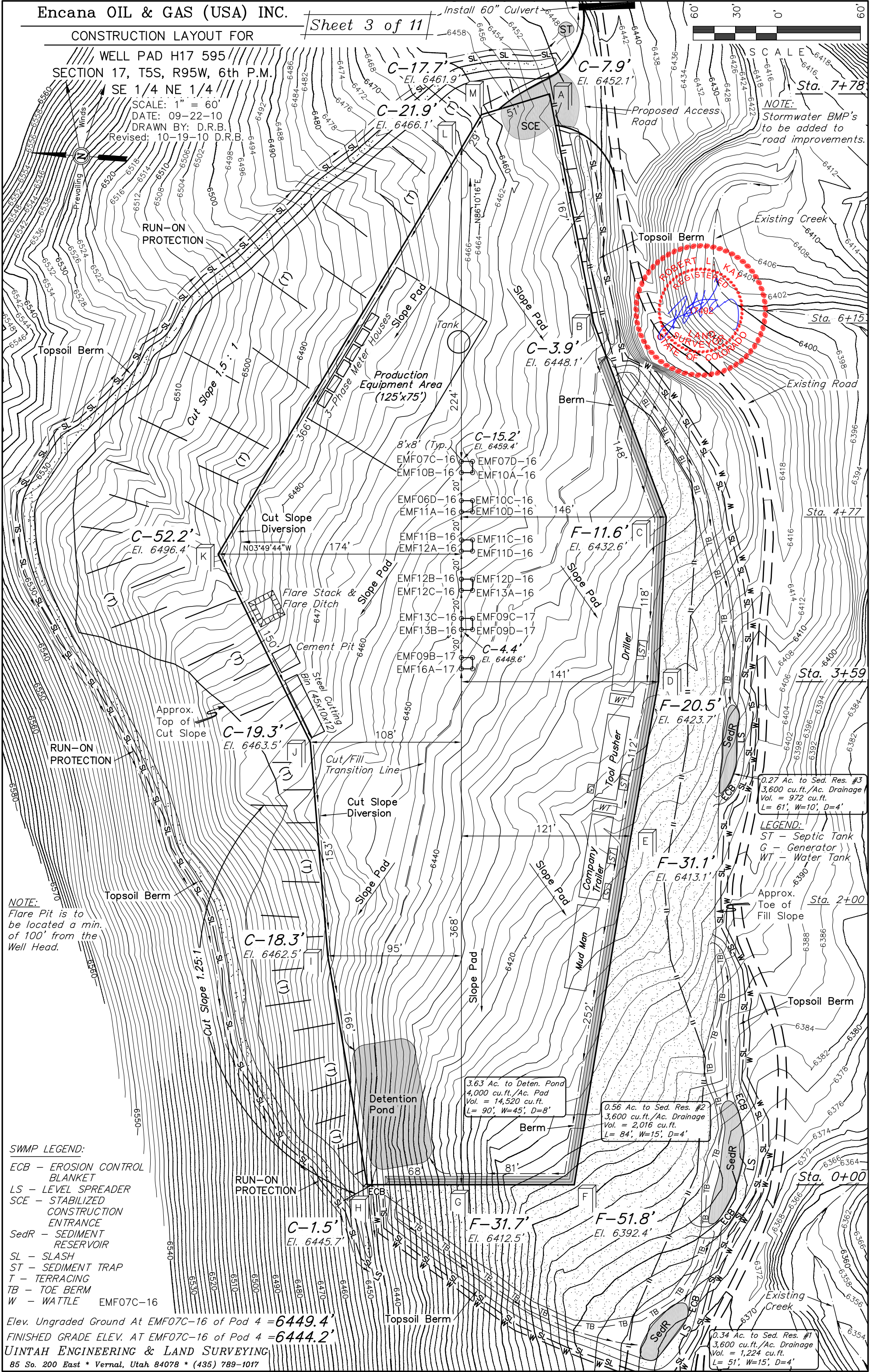
CONSTRUCTION LAYOUT FOR

WELL PAD H17 595  
SECTION 17, T5S, R95W, 6th P.M.  
SE 1/4 NE 1/4

SCALE: 1" = 60'  
DATE: 09-22-10  
DRAWN BY: D.R.B.  
Revised: 10-19-10 D.R.B.



NOTE:  
Stormwater BMP's  
to be added to  
road improvements.

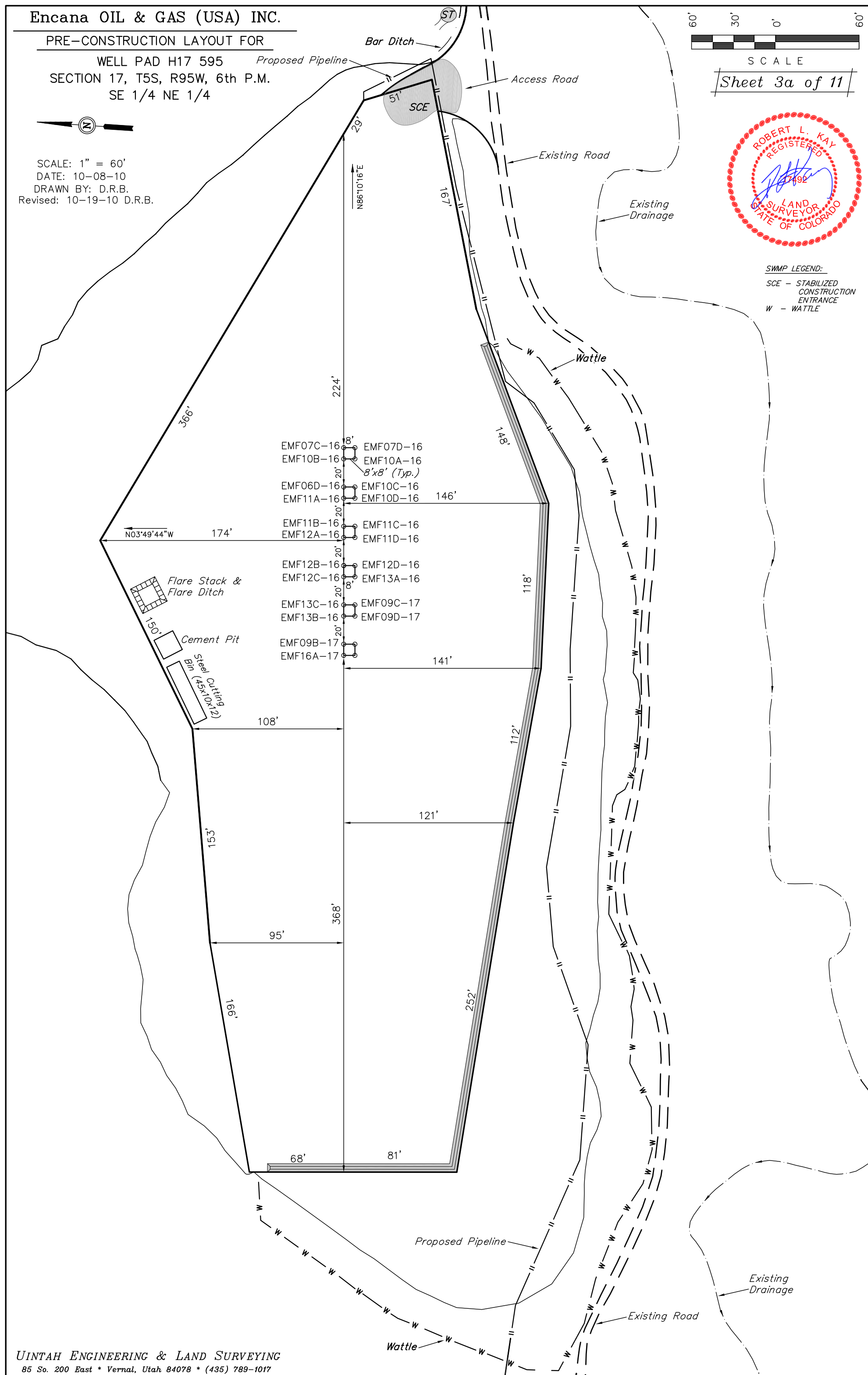


NOTE:  
Flare Pit is to  
be located a min.  
of 100' from the  
Well Head.

- SWMP LEGEND:
- ECB - EROSION CONTROL BLANKET
  - LS - LEVEL SPREADER
  - SCE - STABILIZED CONSTRUCTION ENTRANCE
  - SedR - SEDIMENT RESERVOIR
  - SL - SLASH
  - ST - SEDIMENT TRAP
  - T - TERRACING
  - TB - TOE BERM
  - W - WATTLE

Elev. Ungraded Ground At EMF07C-16 of Pod 4 = 6449.4'  
FINISHED GRADE ELEV. AT EMF07C-16 of Pod 4 = 6444.2'





Encana OIL & GAS (USA) INC.  
CONSTRUCTION LAYOUT CROSS SECTION FOR

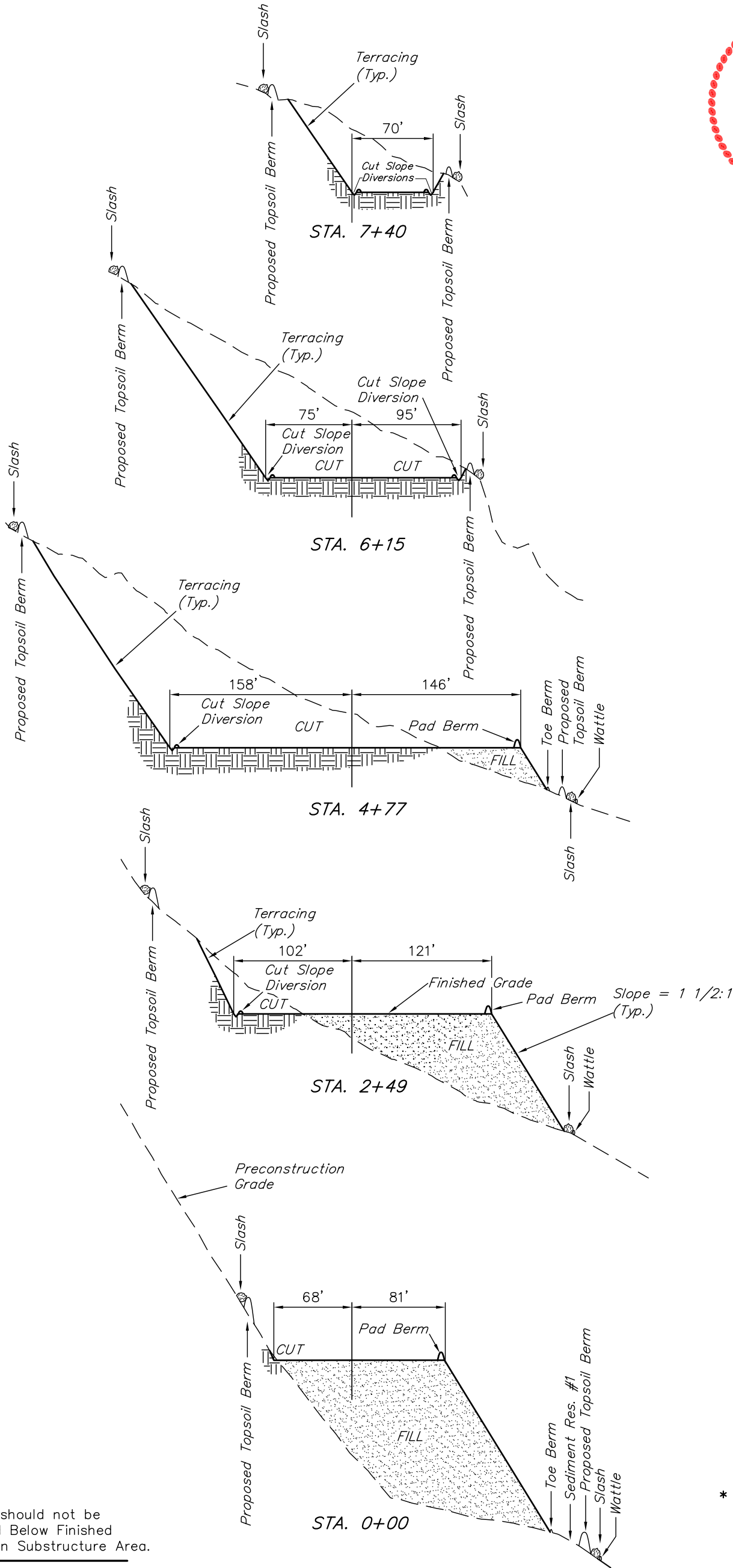
Sheet 4 of 11

WELL PAD H17 595

SECTION 17, T5S, R95W, 6th P.M.  
SE 1/4 NE 1/4

1" = 40'  
X-Section  
Scale  
1" = 100'

DATE: 10-08-10  
DRAWN BY: D.R.B.



NOTE:  
Topsoil should not be  
Stripped Below Finished  
Grade on Substructure Area.

\* NOTE:  
FILL QUANTITY INCLUDES  
5% FOR COMPACTION

APPROXIMATE YARDAGES

(6") Topsoil Stripping = 4,900 Cu. Yds.  
Remaining Location = 84,370 Cu. Yds.  
TOTAL CUT = 89,270 CU.YDS.  
FILL = 84,370 CU.YDS.

EXCESS MATERIAL = 4,900 Cu. Yds.  
Topsoil = 4,900 Cu. Yds.  
EXCESS UNBALANCE = 0 Cu. Yds.  
(After Interim Rehabilitation)

NOTE:  
NO EXCESS MATERIAL WAS  
CALCULATED FOR PIT BACKFILL.

UINTAH ENGINEERING & LAND SURVEYING  
85 So. 200 East \* Vernal, Utah 84078 \* (435) 789-1017

UINTAH ENGINEERING & LAND SURVEYING  
85 So. 200 East \* Vernal, Utah 84078 \* (435) 789-1017



Encana OIL & GAS (USA) INC.

PRODUCTION SCHEMATIC FOR

WELL PAD H17 595

SECTION 17, T5S, R95W, 6th P.M.

SE 1/4 NE 1/4

Install 60" Culvert

Bar Ditch

Access Road

SCE

RV

RV

RV

RV

RV

RV

RV

RV

RV

RV

RV

RV

RV

RV

Tank

Production  
Equipment Area  
(125'x75')

3-Phase Meter Houses

EMF07C-16 EMF07D-16  
EMF10B-16 EMF10A-16

EMF06D-16 EMF10C-16  
EMF11A-16 EMF10D-16

EMF11B-16 EMF11C-16  
EMF12A-16 EMF11D-16

EMF12B-16 EMF12D-16  
EMF12C-16 EMF13A-16

EMF13C-16 EMF09C-17  
EMF13B-16 EMF09D-17

EMF09B-17  
EMF16A-17

100'

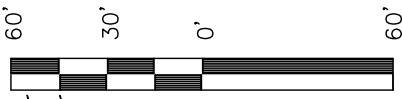
108'

100'

268'

SCALE: 1" = 60'  
DATE: 10-08-10  
DRAWN BY: D.R.B.  
Revised: 10-19-10 D.R.B.

SWMP LEGEND:  
RV - REVEGATION  
SCE - STABILIZED  
CONSTRUCTION  
ENTRANCE



SCALE  
Sheet 6 of 11



APPROXIMATE ACREAGES

TOTAL RECLAIMED AREA = ± 7.711 ACRES  
UN-RECLAIMED AREA = ± 2.705 ACRES

UINTAH ENGINEERING & LAND SURVEYING  
85 So. 200 East \* Vernal, Utah 84078 \* (435) 789-1017



Encana OIL & GAS (USA) INC.

SURFACE DISTURBANCE AREA FOR

WELL PAD H17 595  
SECTION 17, T5S, R95W, 6th P.M.  
SE 1/4 NE 1/4

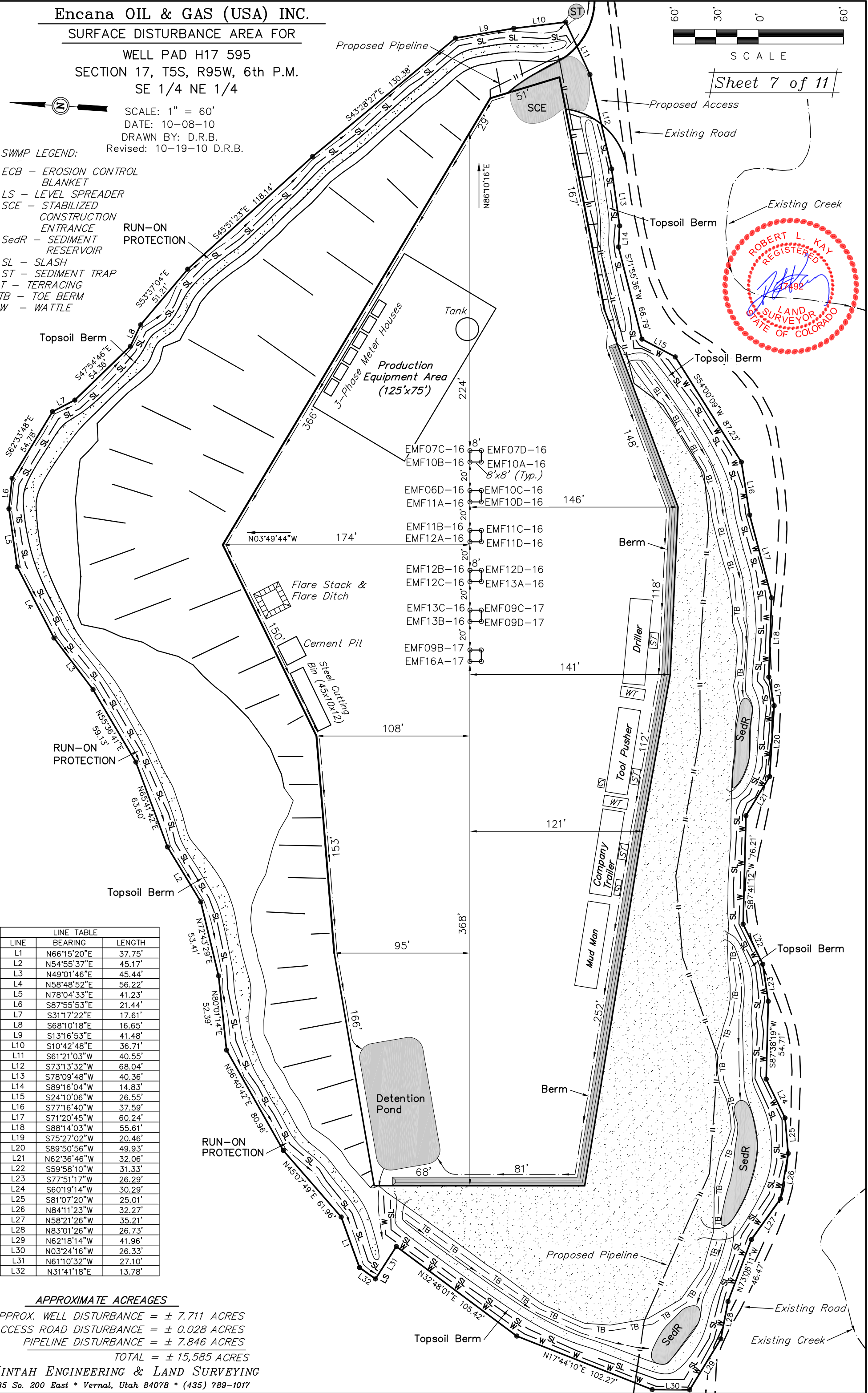


SCALE: 1" = 60'  
DATE: 10-08-10  
DRAWN BY: D.R.B.  
Revised: 10-19-10 D.R.B.

SWMP LEGEND:

ECB - EROSION CONTROL  
BLANKET  
LS - LEVEL SPREADER  
SCE - STABILIZED  
CONSTRUCTION  
ENTRANCE  
SedR - SEDIMENT  
RESERVOIR  
SL - SLASH  
ST - SEDIMENT TRAP  
T - TERRACING  
TB - TOE BERM  
W - WATTLE

RUN-ON  
PROTECTION



| LINE TABLE |             |        |
|------------|-------------|--------|
| LINE       | BEARING     | LENGTH |
| L1         | N66°15'20"E | 37.75' |
| L2         | N54°55'37"E | 45.17' |
| L3         | N49°01'46"E | 45.44' |
| L4         | N58°48'52"E | 56.22' |
| L5         | N78°04'33"E | 41.23' |
| L6         | S87°55'53"E | 21.44' |
| L7         | S31°17'22"E | 17.61' |
| L8         | S68°10'18"E | 16.65' |
| L9         | S13°16'53"E | 41.48' |
| L10        | S10°42'48"E | 36.71' |
| L11        | S61°21'03"W | 40.55' |
| L12        | S73°13'32"W | 68.04' |
| L13        | S78°09'48"W | 40.36' |
| L14        | S89°16'04"W | 14.83' |
| L15        | S24°10'06"W | 26.55' |
| L16        | S77°16'40"W | 37.59' |
| L17        | S71°20'45"W | 60.24' |
| L18        | S88°14'03"W | 55.61' |
| L19        | S75°27'02"W | 20.46' |
| L20        | S89°50'56"W | 49.93' |
| L21        | N62°36'46"W | 32.06' |
| L22        | S59°58'10"W | 31.33' |
| L23        | S77°51'17"W | 26.29' |
| L24        | S60°19'14"W | 30.29' |
| L25        | S81°07'20"W | 25.01' |
| L26        | N84°11'23"W | 32.27' |
| L27        | N58°21'26"W | 35.21' |
| L28        | N83°01'26"W | 26.73' |
| L29        | N62°18'14"W | 41.96' |
| L30        | N03°24'16"W | 26.33' |
| L31        | N61°10'32"E | 27.10' |
| L32        | N31°41'18"E | 13.78' |

APPROXIMATE ACREAGES

APPROX. WELL DISTURBANCE = ± 7.711 ACRES  
ACCESS ROAD DISTURBANCE = ± 0.028 ACRES  
PIPELINE DISTURBANCE = ± 7.846 ACRES

TOTAL = ± 15,585 ACRES

UINTAH ENGINEERING & LAND SURVEYING  
85 So. 200 East \* Vernal, Utah 84078 \* (435) 789-1017