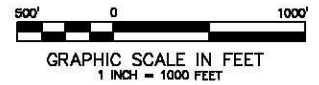


Long Ridge 116-595
Pad Location



SECTION CORNER
LOCATION BASED ON GLO
RECORD INFORMATION

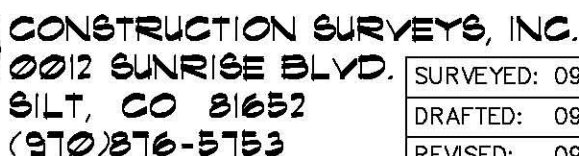
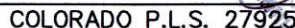
FIELD SURVEYED SECTION
CORNER LOCATIONSFIELD SURVEYED WELL
LOCATION

CALCULATED BOTTOM
HOLE LOCATION

REFERENCE NOTES

- 1) T. 5 S., R. 95 W., 6TH P.M. GLO PLAT.
- 2) U.S.G.S. QUAD: FORKED GULCH, CO
- 3) ELEVATIONS BASED ON N.A.V.D. 1988
- 4) LATITUDES AND LONGITUDES ARE BASED ON NAD 83, COLORADO CENTRAL ZONE.
- 5) GPS OPERATOR IVAN MARTIN, OBSERVED A PDOP OF 2.5.
- 6) ALL GPS OBSERVATIONS ARE IN COMPLIANCE WITH COGCC RULE NO. 215.
- 7) SURFACE AND BOTTOM HOLE LOCATIONS ARE MEASURED 90° FROM SECTION LINES.

I, George R. Bauer: a Professional Land Surveyor in the State of Colorado do hereby certify that this Survey was made under my direct supervision, and that this Plot represents said Survey.



SURVEYED: 09/08/10	SCALE: 1" = 1000'
DRAFTED: 09/16/10	DWG: Berry/LongRidge I16-595.dwg
REVISED: 09/24/10	SHEET: 1 of 11