

Critter Creek 16-20H

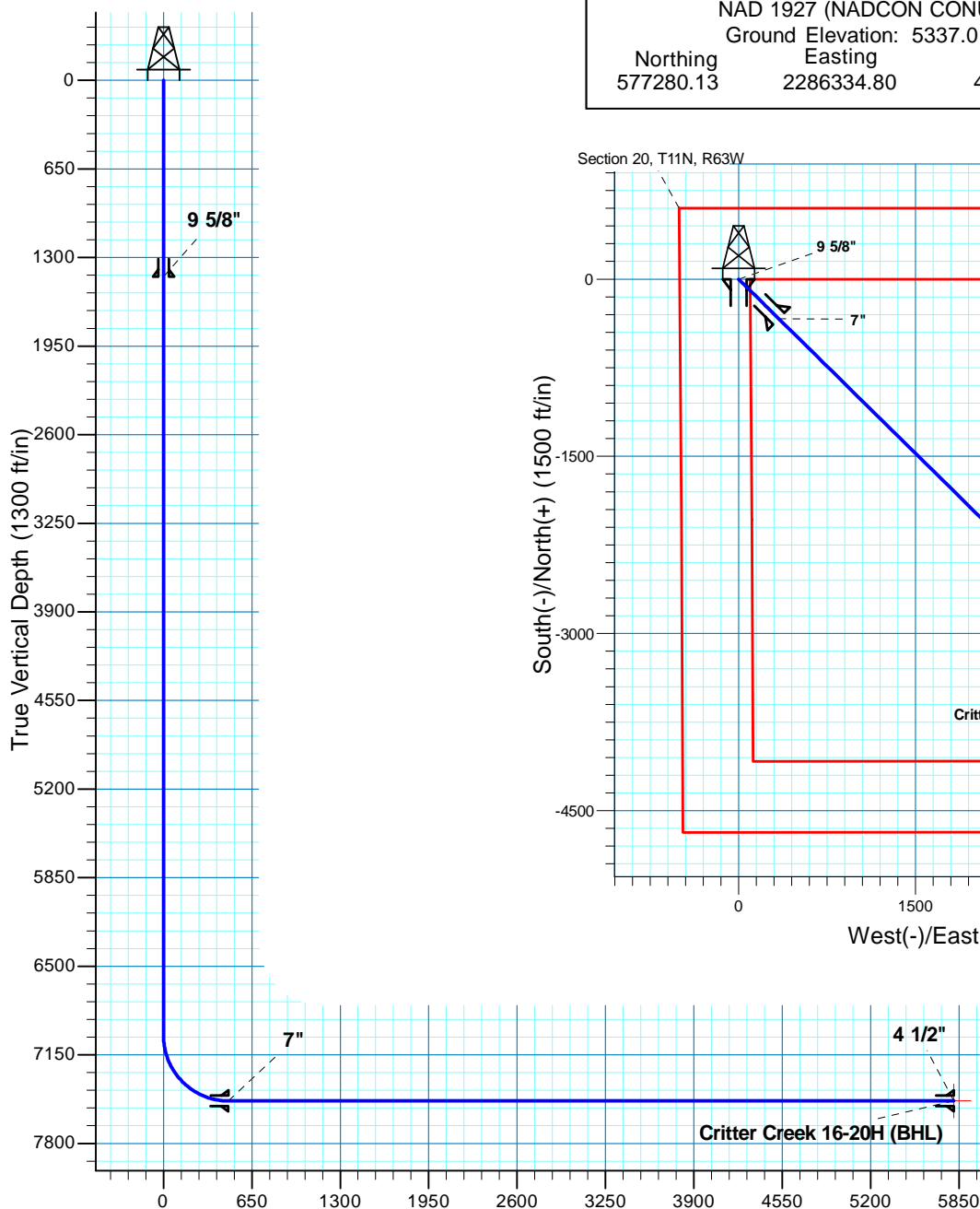
Section 20 T11N R63W

Weld County, CO



Surface Location

NAD 1927 (NADCON CONUS) Colorado North 501
Ground Elevation: 5337.0 RIG @ 5362.0ft (TBD)
Northing 577280.13 Easting 2286334.80 Latitude 40° 54' 48.380 N Longitude 104° 27' 50.630 W



Vertical Section at 134.50° (1300 ft/in)

T M
Azimuths to True North
Magnetic North: 8.88°
Magnetic Field
Strength: 53583.3snT
Dip Angle: 67.57°
Date: 2/22/2010
Model: IGRF200510

Project: DJ - Hereford Ranch
Site: Critter Creek 16-20H
Well: Critter Creek 16-20H
Plan: APD

SECTION DETAILS

Sec	MD	Inc	Azi	TVD	+N/-S	+E/-W	DLeg	TFace	VSec	Target
1	0.0	0.00	0.00	0.0	0.0	0.0	0.00	0.00	0.0	
2	7010.5	0.00	0.00	7010.5	0.0	0.0	0.00	0.00	0.0	
3	7760.5	90.00	134.50	7488.0	-334.6	340.6	12.00	134.50	477.5	
4	13094.9	90.00	134.50	7488.0	-4073.4	4145.4	0.00	0.00	5811.8	Critter Creek 16-20H (BHL)

TARGET DETAILS

Name	TVD	+N/-S	+E/-W	Northing	Easting	Latitude	Longitude	Shape Point
Critter Creek 16-20H (BHL)	7488.0	-4073.4	4145.4	573255.43	2290527.54	40° 54' 8.129 N	104° 26' 56.648 W	