
ANTERO RESOURCES

**MCLIN B9
KOKOPELLI
Garfield County , Colorado**

Cement Surface Casing **19-Jun-2010**

Post Job Report



Cementing Job Summary

The Road to Excellence Starts with Safety

Sold To #: 337854	Ship To #: 2786927	Quote #:	Sales Order #: 7416208
Customer: ANTERO RESOURCES		Customer Rep: HONEYCUT, JOE	
Well Name: MCLIN	Well #: B9	API/UWI #: 05-045-19375	
Field: KOKOPELLI	City (SAP): SILT	County/Parish: Garfield	State: Colorado
Lat: N 39.531 deg. OR N 39 deg. 31 min. 51.46 secs.		Long: W 107.608 deg. OR W -108 deg. 23 min. 31.16 secs.	
Contractor: FRONTIER 12		Rig/Platform Name/Num: FRONTIER 12	
Job Purpose: Cement Surface Casing			
Well Type: Development Well		Job Type: Cement Surface Casing	
Sales Person: METLI, MARSHALL		Srvs Supervisor: DANIEL, EVERETT	MBU ID Emp #: 337325

Job Personnel

HES Emp Name	Exp Hrs	Emp #	HES Emp Name	Exp Hrs	Emp #	HES Emp Name	Exp Hrs	Emp #
BANKS, BRENT A	3.5	371353	DANIEL, EVERETT Dean	3.5	337325	HOEFER, FREEMAN Dennis	3.5	369666

Equipment

HES Unit #	Distance-1 way	HES Unit #	Distance-1 way	HES Unit #	Distance-1 way	HES Unit #	Distance-1 way
10592964	100 mile	10744549	100 mile	10829465	100 mile	10872429	100 mile
11360883	100 mile						

Job Hours

Date	On Location Hours	Operating Hours	Date	On Location Hours	Operating Hours	Date	On Location Hours	Operating Hours
6/19/10	3.5	3.5						

TOTAL	3.5	3.5	Total is the sum of each column separately
-------	-----	-----	--

Job

Job Times

Formation Name							Date	Time	Time Zone
Formation Depth (MD)	Top			Bottom		Called Out	19 - Jun - 2010	07:18	MST
Form Type				BHST		On Location	19 - Jun - 2010	11:45	MST
Job depth MD	1010. m		Job Depth TVD		1010. m	Job Started	19 - Jun - 2010	13:24	MST
Water Depth				Wk Ht Above Floor	4. m	Job Completed	19 - Jun - 2010	13:57	MST
Perforation Depth (MD)	From			To		Departed Loc	19 - Jun - 2010	15:30	MST

Well Data

Description	New / Used	Max pressure MPa	Size mm	ID mm	Weight kg/m	Thread	Grade	Top MD m	Bottom MD m	Top TVD m	Bottom TVD m
-------------	---------------	------------------------	------------	----------	----------------	--------	-------	-------------	-------------------	-----------------	--------------------

Sales/Rental/3rd Party (HES)

Description	Qty	Qty uom	Depth	Supplier
PLUG,CMTG,TOP,8 5/8,HWE,7.20 MIN/8.09 MA	1	EA		

Tools and Accessories

Type	Size	Qty	Make	Depth	Type	Size	Qty	Make	Depth	Type	Size	Qty	Make
Guide Shoe					Packer					Top Plug			
Float Shoe					Bridge Plug					Bottom Plug			
Float Collar					Retainer					SSR plug set			
Insert Float										Plug Container			
Stage Tool										Centralizers			

Miscellaneous Materials

Gelling Agt	Conc	Surfactant	Conc	Acid Type	Qty	Conc	%
Treatment Fld	Conc	Inhibitor	Conc	Sand Type	Size	Qty	

Fluid Data									
Stage/Plug #: 1									
Fluid #	Stage Type	Fluid Name	Qty	Qty uom	Mixing Density kg/m3	Yield m3/sk	Mix Fluid m3/tonne	Rate m3/min	Total Mix Fluid m3/tonne
1	Freshwater Ahead		20	bbl	8.33	.0	.0	6.0	
2	VersaCem GJC085	VERSACEM (TM) SYSTEM (452010)	146	sacks	12.3	2.38	13.77	8.0	13.77
13.77 Gal		FRESH WATER							
3	SwiftCem GJC138	SWIFTCM (TM) SYSTEM (452990)	113	sacks	14.2	1.43	6.85	8.0	6.85
6.85 Gal		FRESH WATER							
4	FreshWater Displacement		58.8	bbl	8.33	.0	.0	8.0	
Calculated Values		Pressures		Volumes					
Displacement	58.8	Shut In: Instant		Lost Returns		Cement Slurry	91.7	Pad	
Top Of Cement	Surface	5 Min		Cement Returns		Actual Displacement	58.8	Treatment	
Frac Gradient		15 Min		Spacers	20	Load and Breakdown		Total Job	
Rates									
Circulating	6	Mixing	6	Displacement	10	Avg. Job	8		
Cement Left In Pipe	Amount	39.49 ft	Reason	Shoe Joint					
Frac Ring # 1 @	ID	Frac ring # 2 @	ID	Frac Ring # 3 @	ID	Frac Ring # 4 @	ID		
The Information Stated Herein Is Correct				Customer Representative Signature					

The Road to Excellence Starts with Safety

Sold To #: 337854	Ship To #: 2786927	Quote #:	Sales Order #: 7416208
Customer: ANTERO RESOURCES		Customer Rep: HONEYCUT, JOE	
Well Name: MCLIN	Well #: B9	API/UWI #: 05-045-19375	
Field: KOKOPELLI	City (SAP): SILT	County/Parish: Garfield	State: Colorado
Legal Description:			
Lat: N 39.531 deg. OR N 39 deg. 31 min. 51.46 secs.		Long: W 107.608 deg. OR W -108 deg. 23 min. 31.16 secs.	
Contractor: FRONTIER 12		Rig/Platform Name/Num: FRONTIER 12	
Job Purpose: Cement Surface Casing			Ticket Amount:
Well Type: Development Well		Job Type: Cement Surface Casing	
Sales Person: METLI, MARSHALL		Srvc Supervisor: DANIEL, EVERETT	MBU ID Emp #: 337325

Activity Description	Date/Time	Cht #	Rate m3/min	Volume m3		Pressure MPa		Comments
				Stage	Total	Tubing	Casing	
Call Out	06/19/2010 07:00							
Depart Yard Safety Meeting	06/19/2010 09:30							
Depart from Service Center or Other Site	06/19/2010 09:45							Checked out HES pump (Elite 11), 660
Arrive at Location from Service Center	06/19/2010 11:45							Arrived 1.25hr. early.
Assessment Of Location Safety Meeting	06/19/2010 11:45							Discussed job procedures and safety issues
Consult with Co. Rep.	06/19/2010 11:45							Verified calculations and materials on location including H2O and Cement totals
Safety Meeting - Pre Rig-Up	06/19/2010 12:00							Discussed job procedures and safety issues
Rig-Up Equipment	06/19/2010 12:05							Iron to rig, Iron to pit, Two Water lines, 660,
Rig-Up Completed	06/19/2010 12:30							
Safety Meeting - Pre Job	06/19/2010 13:15							Discussed job procedures and safety issues
Start Job	06/19/2010 13:24							
Prime Pumps	06/19/2010 13:25		1.5	1.5			39.0	Fresh Water
Test Lines	06/19/2010 13:28		0.5	0.1			2200.0	Fresh Water
Pump Spacer 1	06/19/2010 13:32		6	10			105.0	Fresh Water
Pump Lead Cement	06/19/2010 13:37		6	61.9			247.0	146 sks of VersaCem @ 12.3# - 2.38 yield - 13.77 H2O requirement

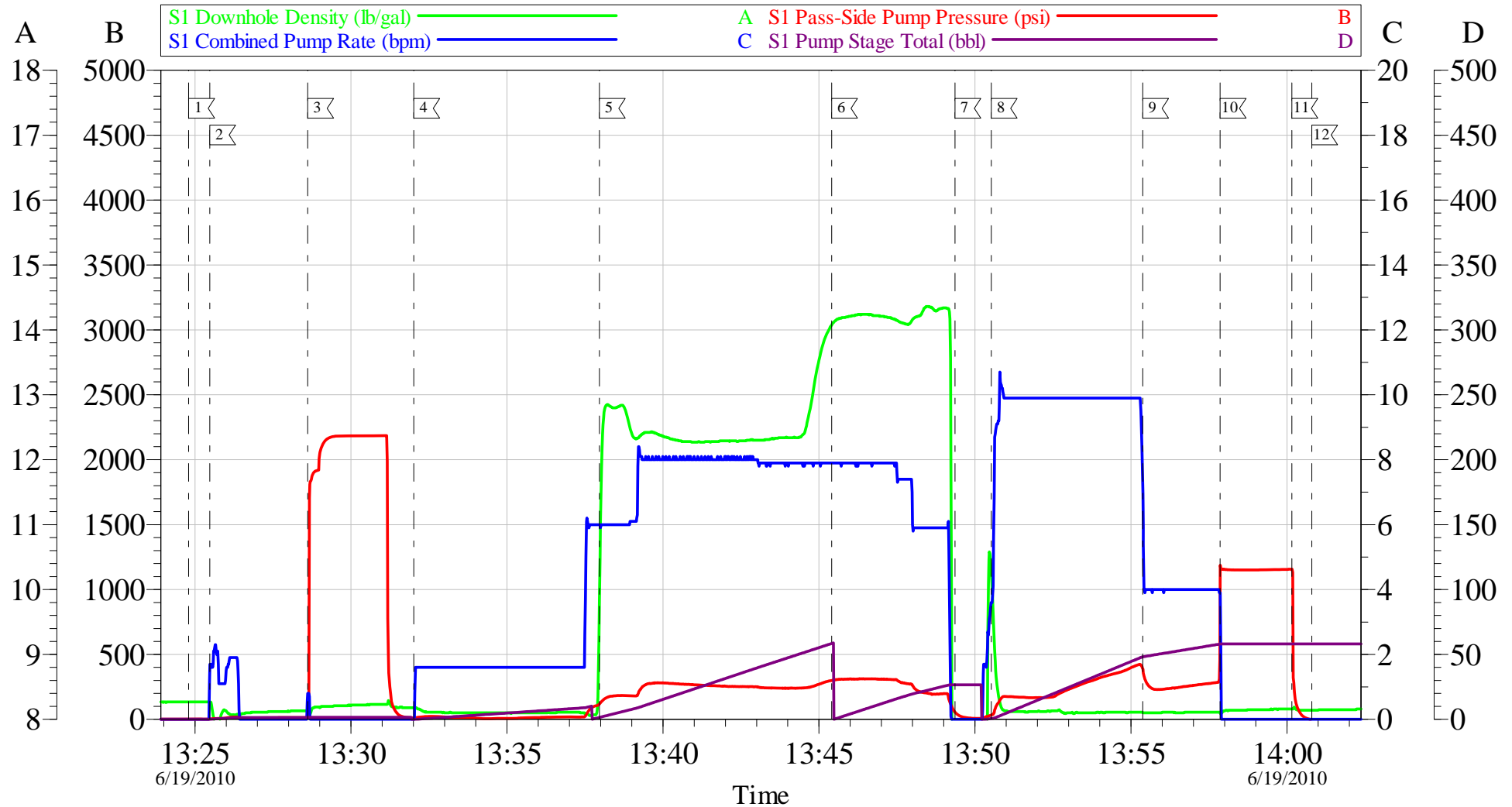
Activity Description	Date/Time	Cht #	Rate m3/min	Volume m3		Pressure MPa		Comments
				Stage	Total	Tubing	Casing	
Pump Tail Cement	06/19/2010 13:45		6	28.8			235.0	113 sks of SwiftCem @ 14.2#-1.43 Yield-6.85 H2O Re
Shutdown	06/19/2010 13:49							
Drop Top Plug	06/19/2010 13:49							
Pump Displacement	06/19/2010 13:50		10	58.7			285.0	Fresh Water
Slow Rate	06/19/2010 13:55		4	48			280.0	Slowed to 4 bpm
Bump Plug	06/19/2010 13:57		4	58.7			1124.0	Bumped Plug @ calculated displacement and 900 psi over
Check Floats	06/19/2010 14:00							Floats Held
End Job	06/19/2010 14:00							
Safety Meeting - Pre Rig-Down	06/19/2010 14:05							Discussed job procedures and safety issues
Rig-Down Equipment	06/19/2010 14:20							
Rig-Down Completed	06/19/2010 15:00							
Safety Meeting - Departing Location	06/19/2010 15:15							
Depart Location for Service Center or Other Site	06/19/2010 15:30							

Total Depth = 1010 , Total Casing = 1003.39 , Shoe Joint =39.49 , Mud Weight =9.1# . Casing remained stationary throughout job and was chained down. 15 bbls of cement returned to surface. 155.4 bbls of H2O were used for the job and 30 bbls were used for clean up (after the job) The plug landed at calculated displacement and the floats held.

Thank you for using Grand Junction Halliburton Dean Daniel & Crew

ANTERO

Surface



Local Event Log

1 Start Job	13:24:48	2 Prime Lines	13:25:28	3 Test Lines	13:28:37
4 Pump H2O Spacer	13:32:01	5 Pump Lead Cement	13:37:58	6 Pump Tail Cement	13:45:24
7 Shut Down/Drop Top Plug	13:49:21	8 Pump H2O Displacement	13:50:31	9 Slow Rate	13:55:23
10 Bump Plug	13:57:52	11 Check Floats	14:00:09	12 End Job	14:00:48

Customer: Antero
Well Description: MCLIN-B9
Company Rep: Joe Honeycutt

Job Date: 19-Jun-2010
Job Type: 8 5/8 Surface
Cement Supervisor: Dean Daniel

Sales Order #: 7416208
ADC Used: Yes
Elite #/Operator: 11/Brent Banks

OptiCem v6.4.4
19-Jun-10 14:29