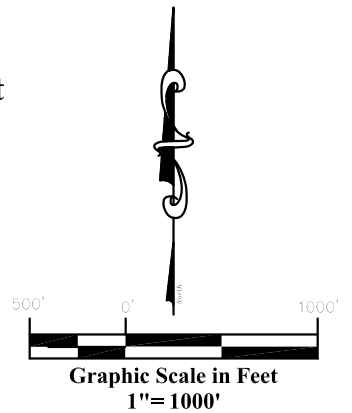
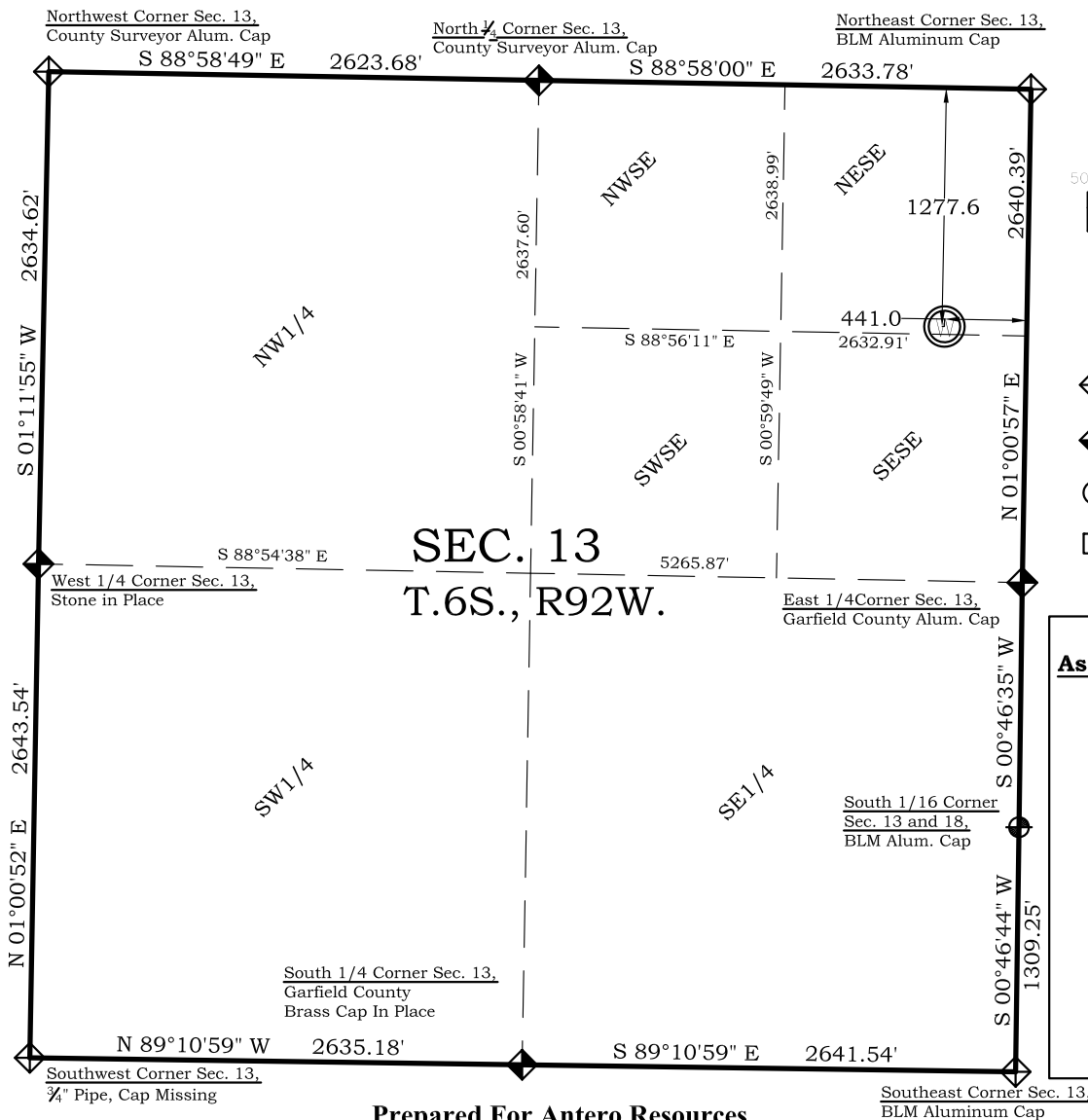


# As Drilled Location Plat

## McLin B9 Well

### Section 13, Township 6 South, Range 92 West



#### Legend

- ◊ - Field Surveyed Section Corner
- ◈ - Field Surveyed Quarter Corner
- ⊙ - Calculated Section Corner Location
- ◻ - Field Surveyed 1/6 Corner

#### McLin B9 As Drilled Surface Location

1278' FNL  
441' FEL  
Gnd El= 5648.8  
**NAD83**  
Lat: 39.530961686°N  
Long: 107.608011654°W  
**NAD27**  
Lat: 39.530981076°N  
Long: 107.607398537°W  
UTM 13 NORTH  
**NAD 1983**  
Northing  
14366601.710  
Easting  
905019.186

**Prepared For Antero Resources**  
**As Drilled McLin B9 Well Situate in The NE 1/4 NE 1/4 Section 13, Township 6 South, Range 92 West of the 6 th. Principal Meridian, County of Garfield, State of Colorado**

#### SURVEYOR'S CERTIFICATE

I, SCOTT E. AIBNER, A REGISTERED LAND SURVEYOR, LICENSED UNDER THE LAWS OF THE STATE OF COLORADO DO HEREBY CERTIFY THAT THE SURVEY SHOWN HEREON WAS PREPARED BY RIVER VALLEY SURVEY, INC., FOR ANTERO RESOURCES, BY ME OR UNDER MY DIRECT SUPERVISION AND THAT THIS PLAT IS A TRUE REPRESENTATION THEREOF.

BY:   
SCOTT E. AIBNER, COLORADO REG. NO. 31143

#### Notes

- 1.) LATITUDE AND LONGITUDE COORDINATES ARE DIFFERENTIALLY CORRECTED AND BASED ON PUBLISHED NGS CONTROL STATION "WDP-5". SYSTEM: UTM ZONE: 13 NORTH DATUM: NAD 1983 (CONUS)
- 2.) ELEVATIONS ARE BASED ON NGVD OF 1929.
- 3.) ALL AS DRILLED HOLE LOCATIONS ARE MEASURED 90 DEGREES FROM SECTION LINE.
- 4.) USGS QUADRANGLE MAP "SILT CO".
- 5.) CURRENT SURFACE LAND USE: GRAVEL PIT
- 6.) PDOP AT TIME OF LOCATION OF SURFACE WELL = 1.3



**River Valley Survey, Inc.**  
110 East 3rd. Street, Suite 207  
Rifle, Colorado 81650  
Ph: 970-379-7846

**Project: McLin B PAD**

**Field Date: 07-22-10**

**Date: 07-23-2010**

**Scale: 1"= 1000'**

**Sheet: 1 of 1**

**As Drilled Well Location Plat  
Prepared For Antero Resources**

**Situate In:**  
NE 1/4 Section 13, T6S., R. 92 W. of the  
6th P.M., Garfield County, Colorado

