



**SUPERIOR**  
Black Lick, Pa.  
Mercer, Pa.  
Wooster, Oh.  
Cleveland, Ok.  
Trinidad, Co.

## CEMENT BOND GAMMA RAY 1000 PSI

Company XTO Energy Inc.

Well New Elk 24-15

Field Purgatorie River

County Las Animas

State CO

Company XTO Energy Inc.

Well New Elk 24-15

Field Purgatorie River

County Las Animas

State CO

Location:

API # : 05 071 09472 00

666' FSL & 2354' FEL

SEC 24 TWP 33S RGE 68W

Other Services

TEMP

Permanent Datum Ground Level Elevation 7955'  
Log Measured From Ground Level  
Drilling Measured From Ground Level

Elevation  
K.B. -----  
D.F. -----  
G.L. 7955'

Date

5/29/08

Run Number

one

Depth Driller

2480'

Depth Logger

2403'

Bottom Logged Interval

2399'

Top Log Interval

Surf.

Open Hole Size

7 7/8"

Type Fluid

water

Density / Viscosity

///

Max. Recorded Temp.

797'

Estimated Cement Top

120F

Time Well Ready

ROA

Time Logger on Bottom

9:40

Equipment Number

0703

Location

Trinidad

Recorded By

Worley

Witnessed By

Mr. Dominguez

Borehole Record

Bit

From

To

Size

Weight

From

To

Tubing Record

Size

Weight

From

To

Top

Bottom

764'

Size

8 5/8"

Wgt/Ft

Top

00

Bottom

764'

00

2454'

2454'

2454'

2454'

2454'

2454'

2454'

2454'

2454'



**SUPERIOR**

Black Lick, Pa.  
Mercer, Pa.  
Wooster, Oh.  
Cleveland, Ok.  
Trinidad, Co.

# Main Pass 1000 PSI

<<< Fold Here >>>

All interpretations are opinions based on inferences from electrical or other measurements and we cannot and do not guarantee the accuracy or correctness of any interpretation, and we shall not, except in the case of gross or willful negligence on our part, be liable or responsible for any loss, costs, damages, or expenses incurred or sustained by anyone resulting from any interpretation made by any of our officers, agents or employees. These interpretations are also subject to our general terms and conditions set out in our current Price Schedule.

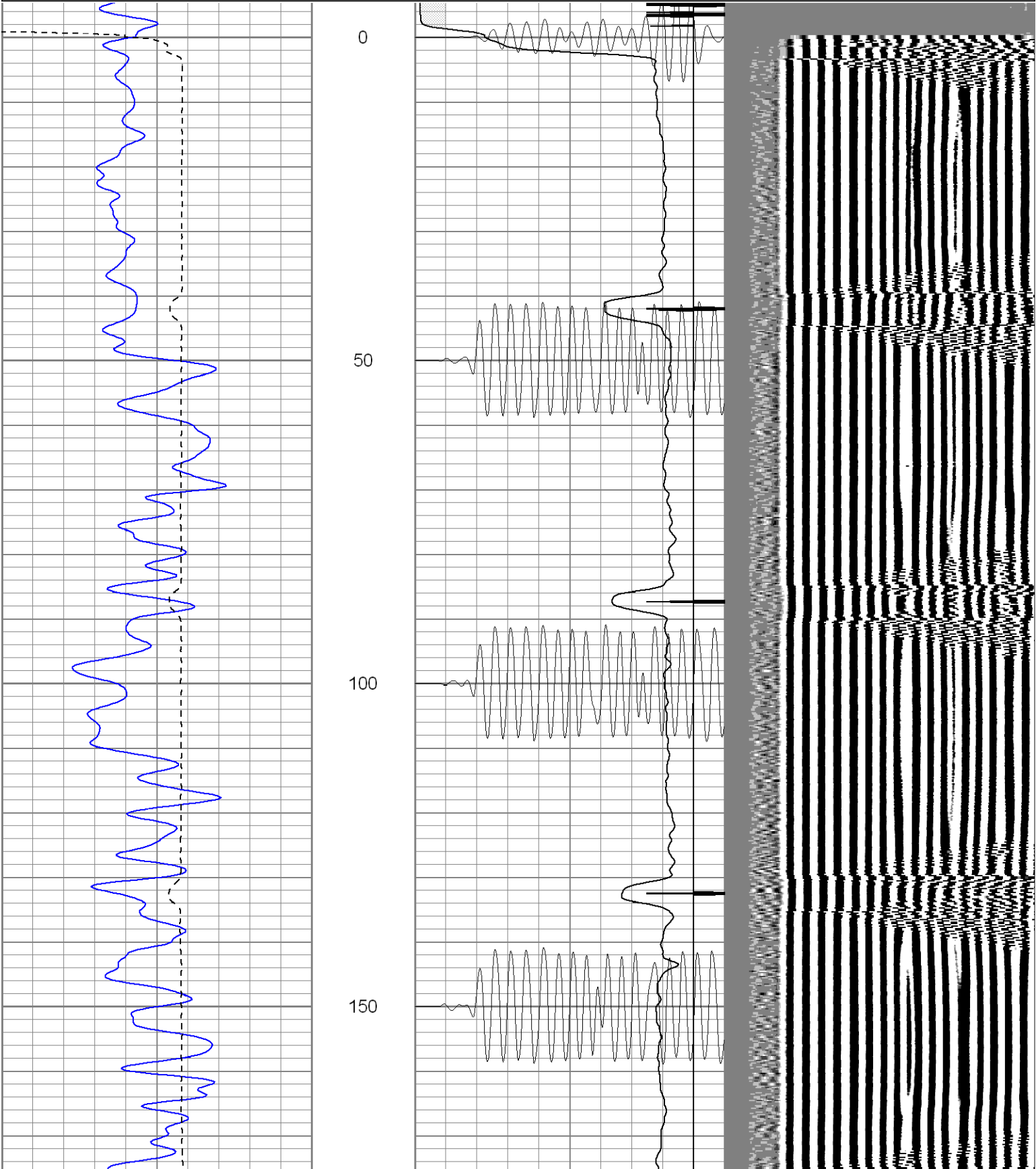
### Comments

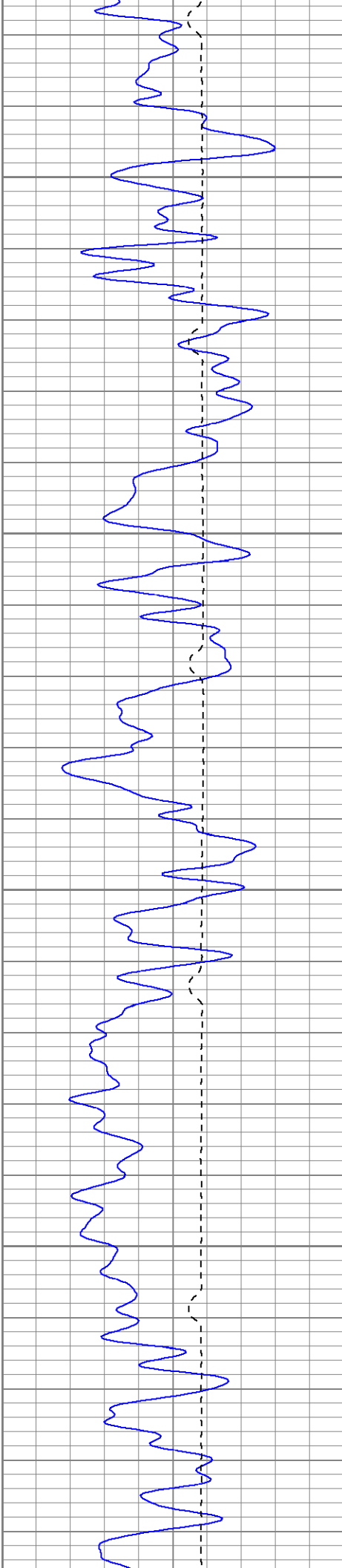
Second Bosque entrance, straight across railroad tracks, at Y stay right to Apache Canyon, take first right past windmill, follow up the hill, thru one location, at Y at left, take first hard right up hill, first drive thru location on top of hill.

CBL ran under 1000 PSI.

Database File: ne24-15b52908.db  
Dataset Pathname: pass2  
Presentation Format: cblsec  
Dataset Creation: Thu May 29 09:46:16 2008 by Log Open-Cased 071220  
Charted by: Depth in Feet scaled 1:240

0	GR (GAPI)	200	18	CCL	-2	200	VDL	1200
200	GR (GAPI)	400	0	AMP3 (mV)	100			
400	TT3 (usec)	200	200	WVF5FT	1200			



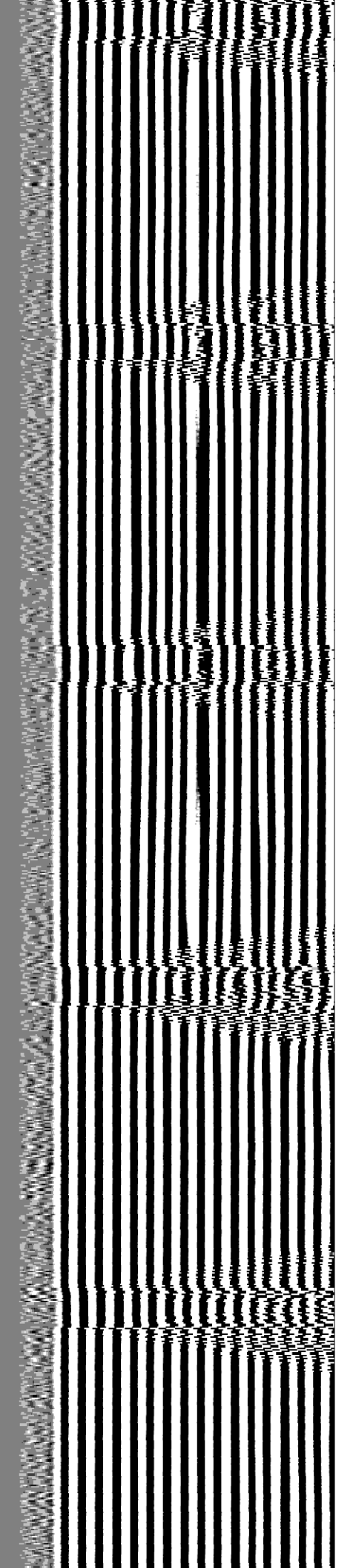


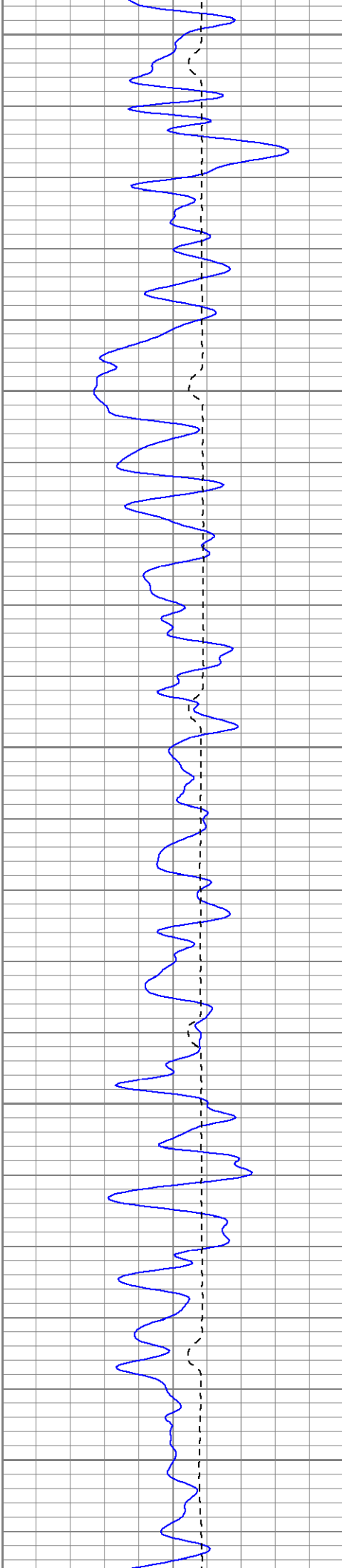
200

250

300

350





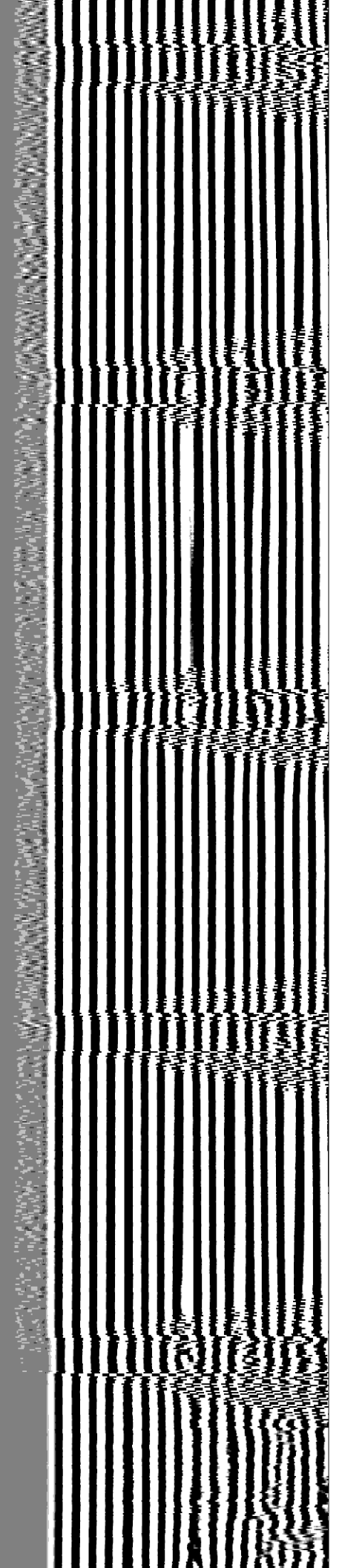
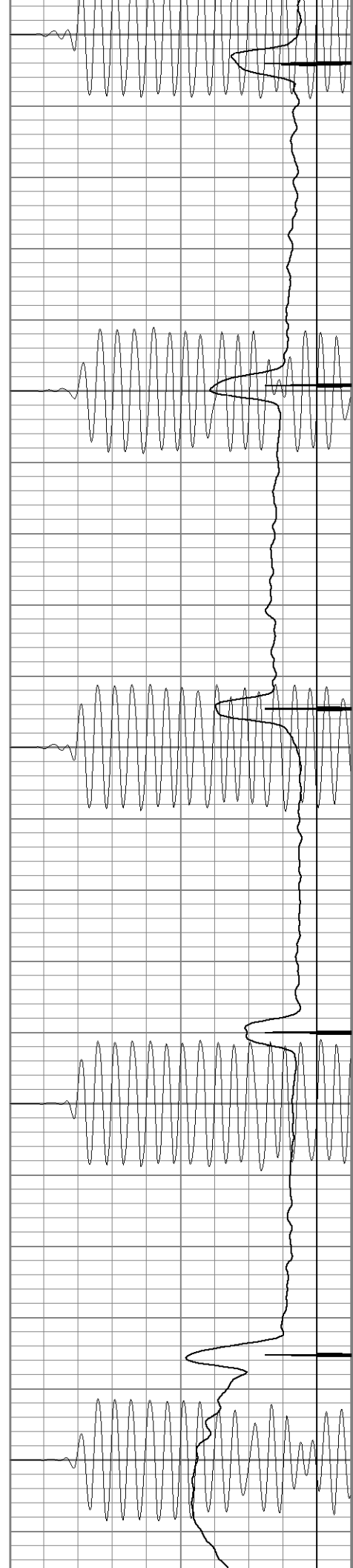
400

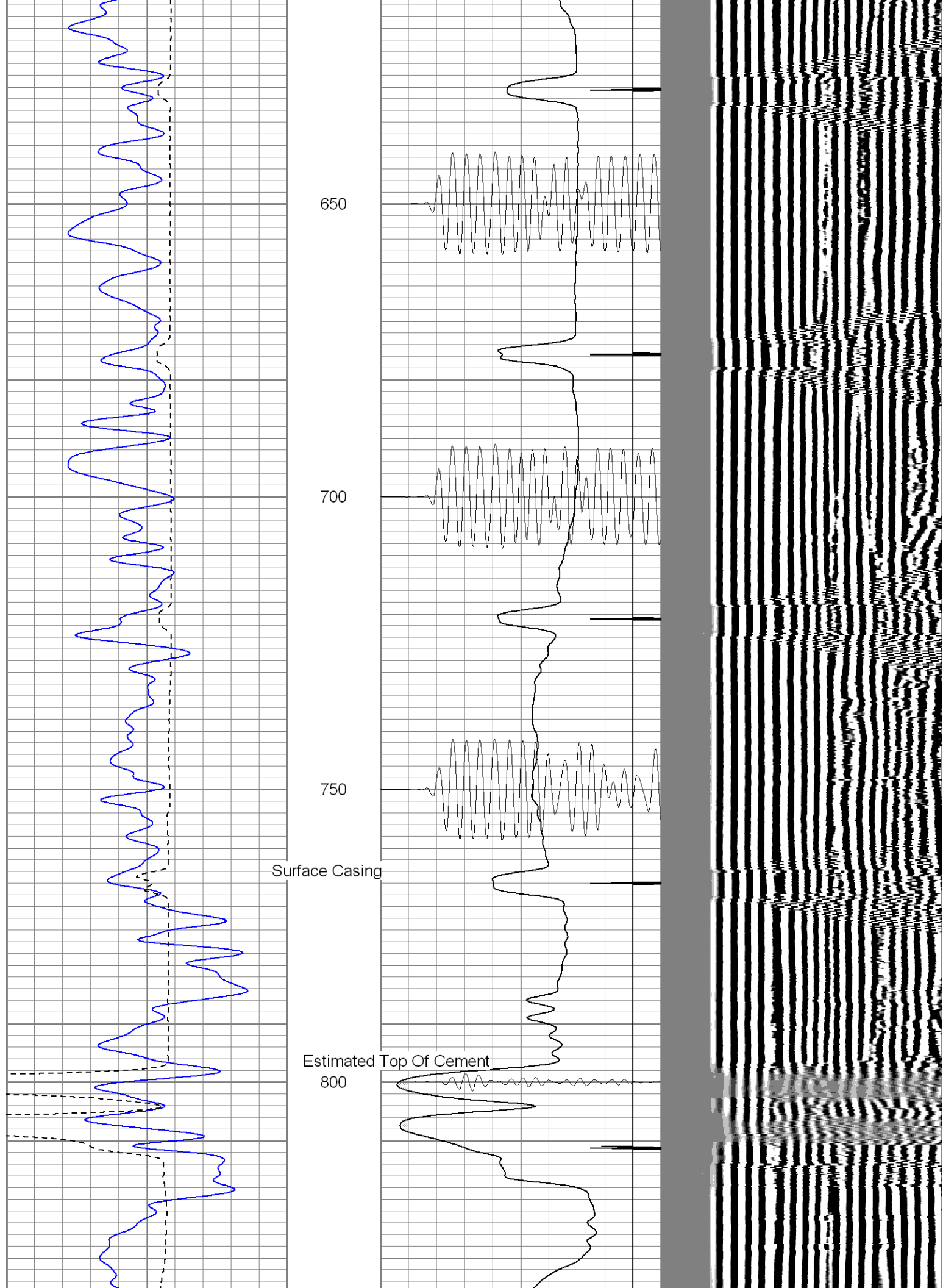
450

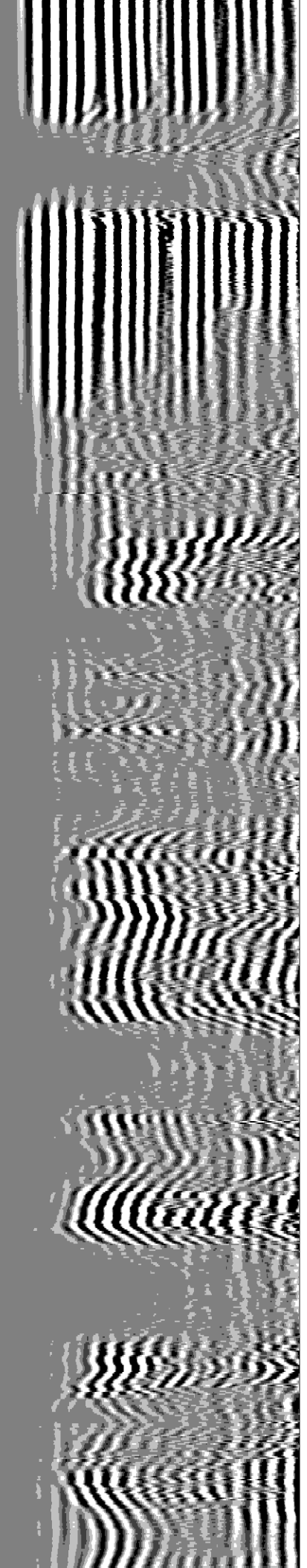
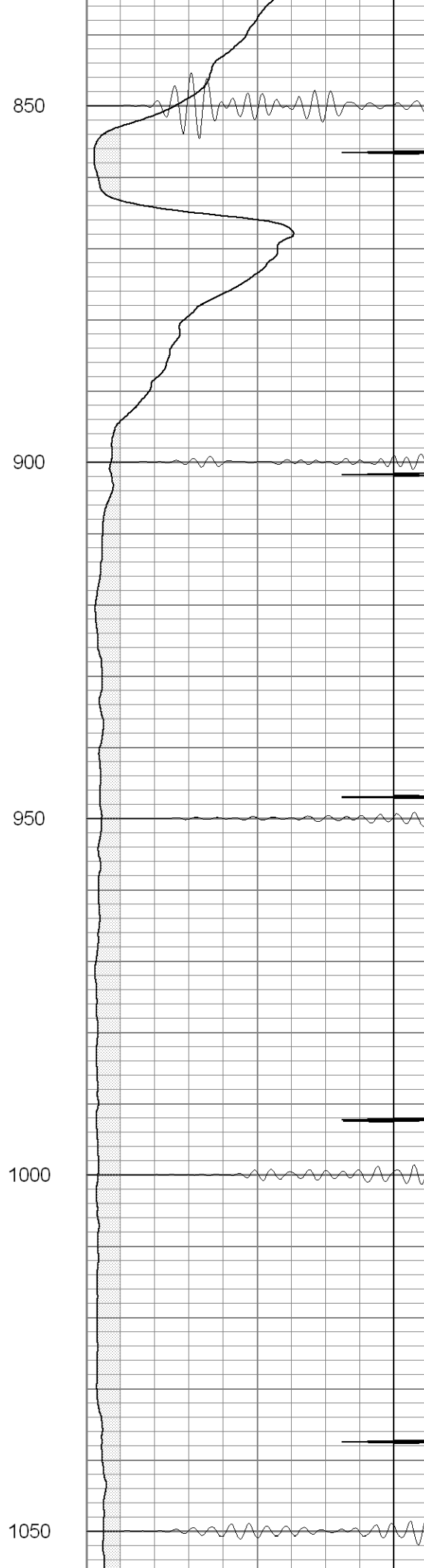
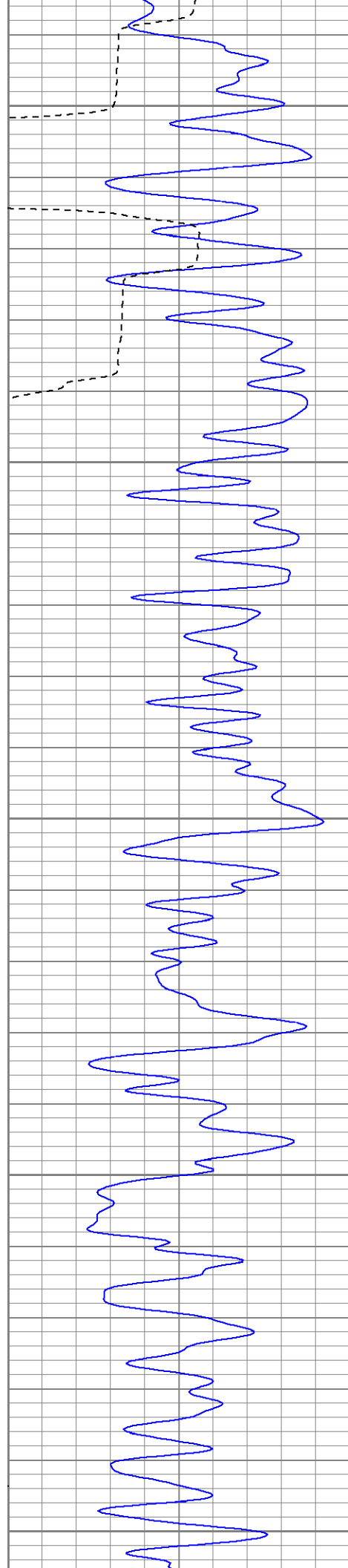
500

550

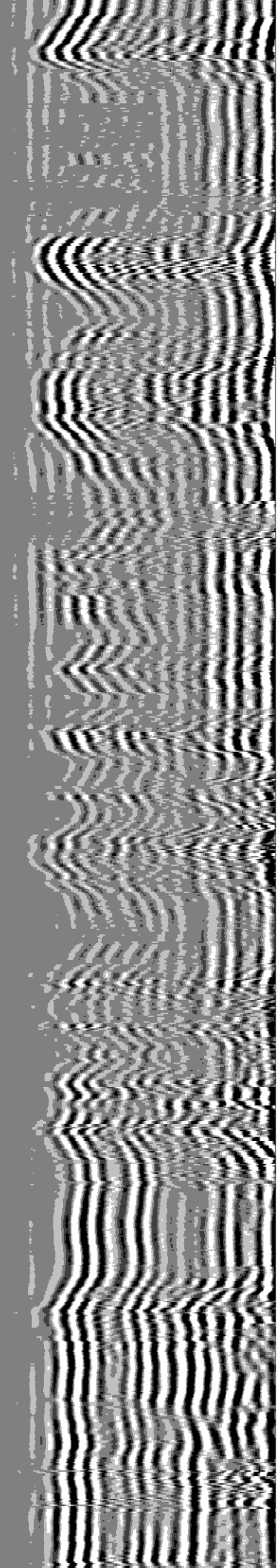
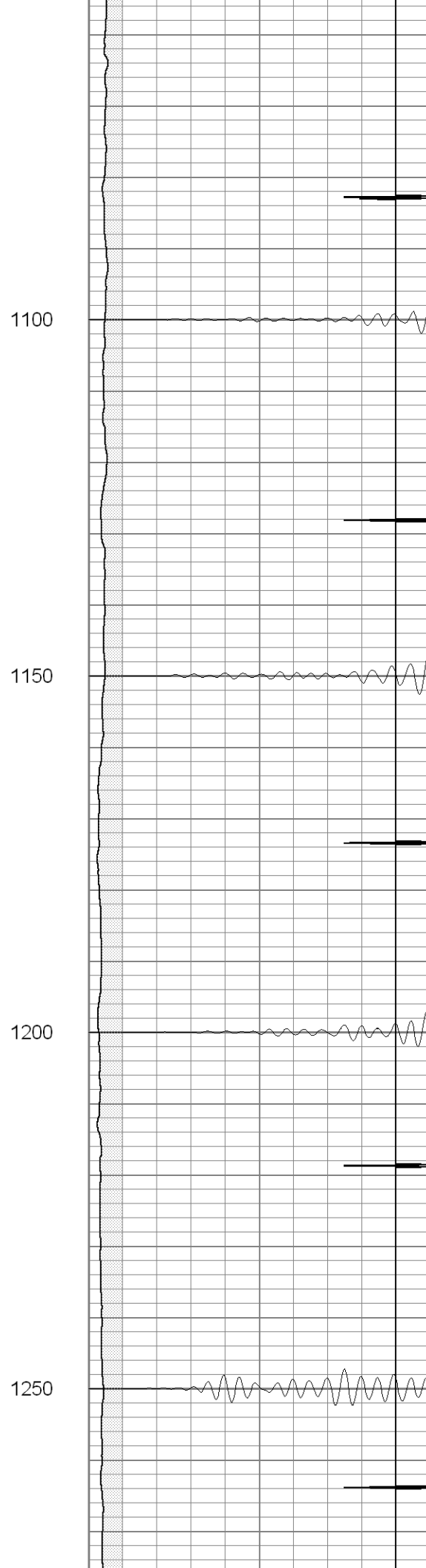
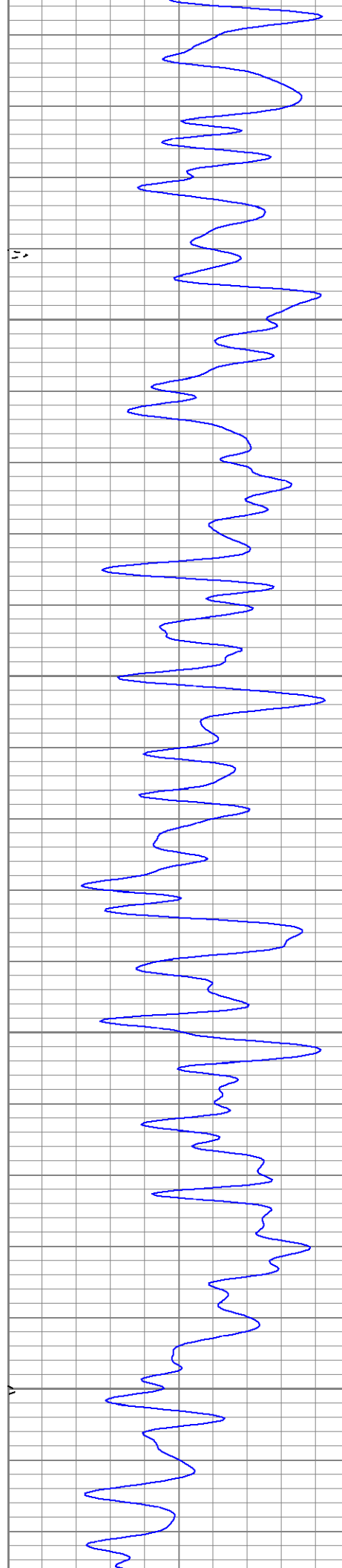
600

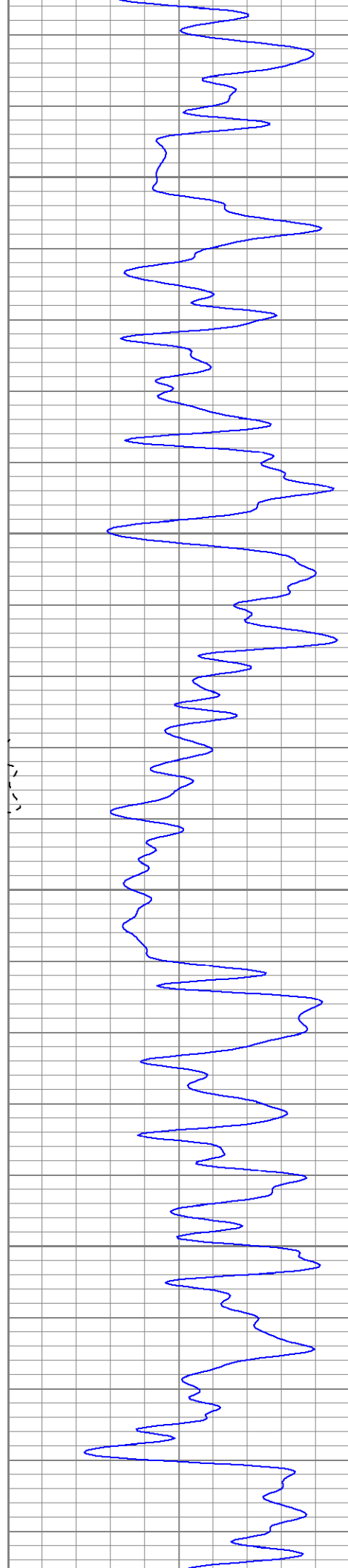










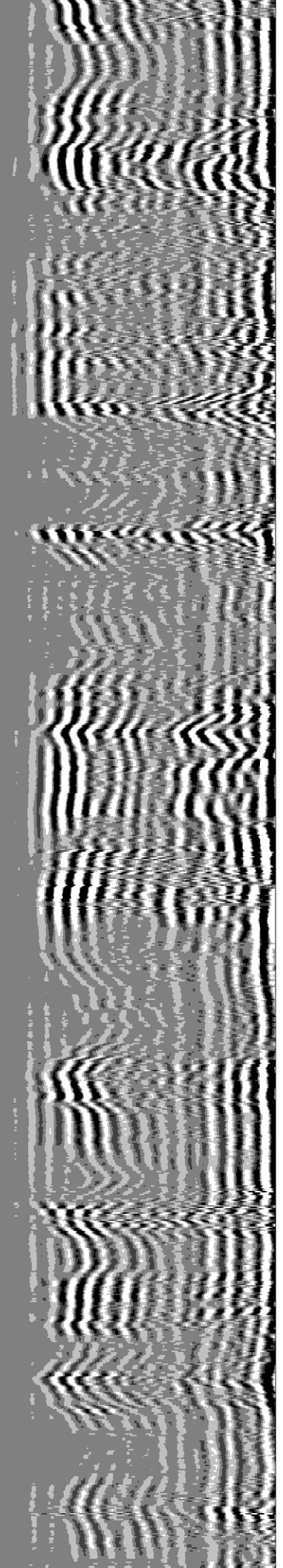
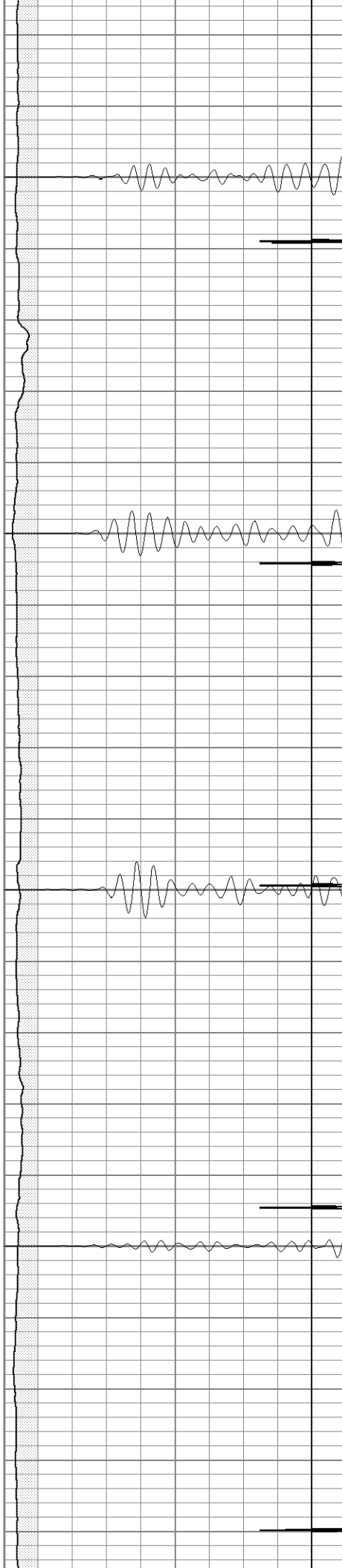


1300

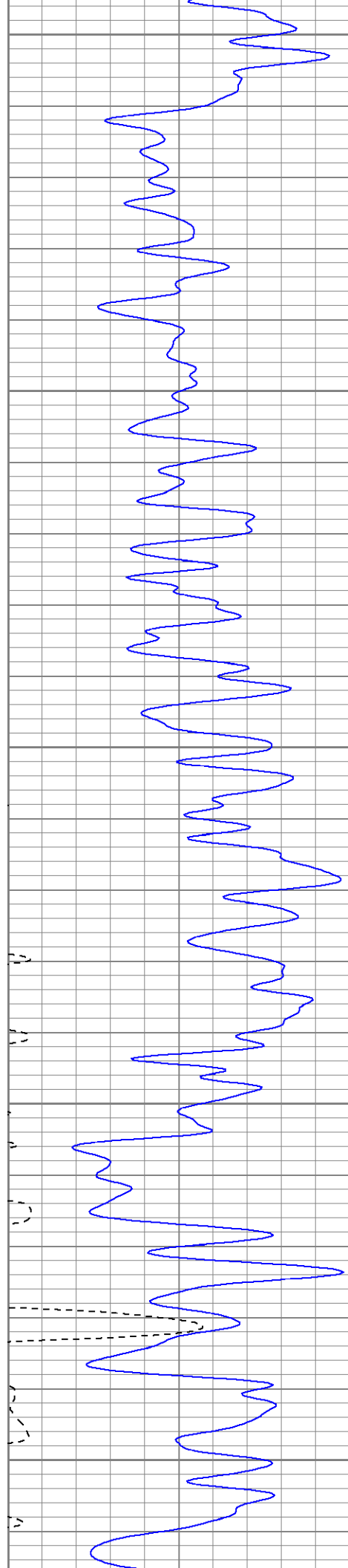
1350

1400

1450







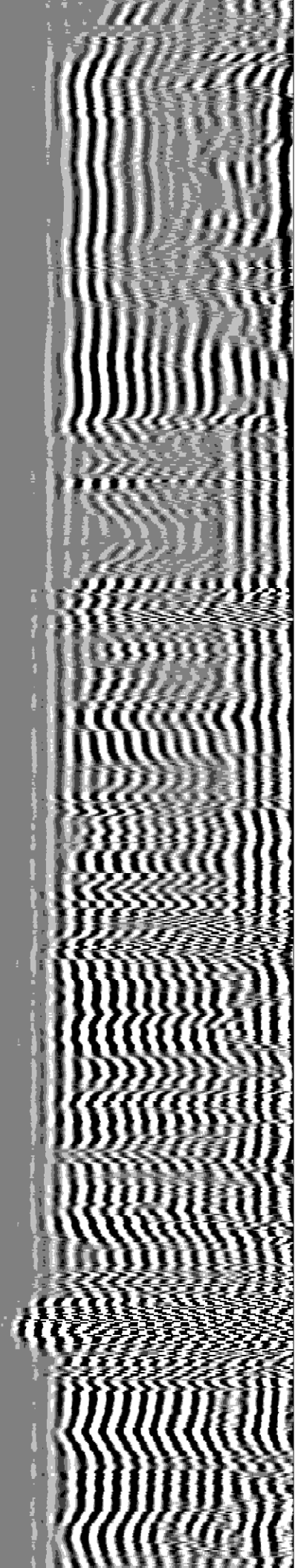
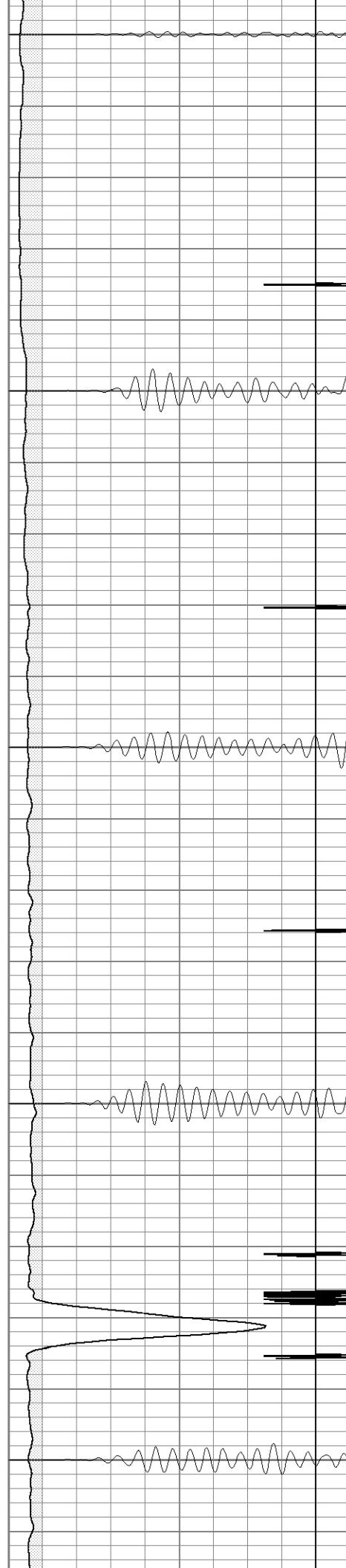
1500

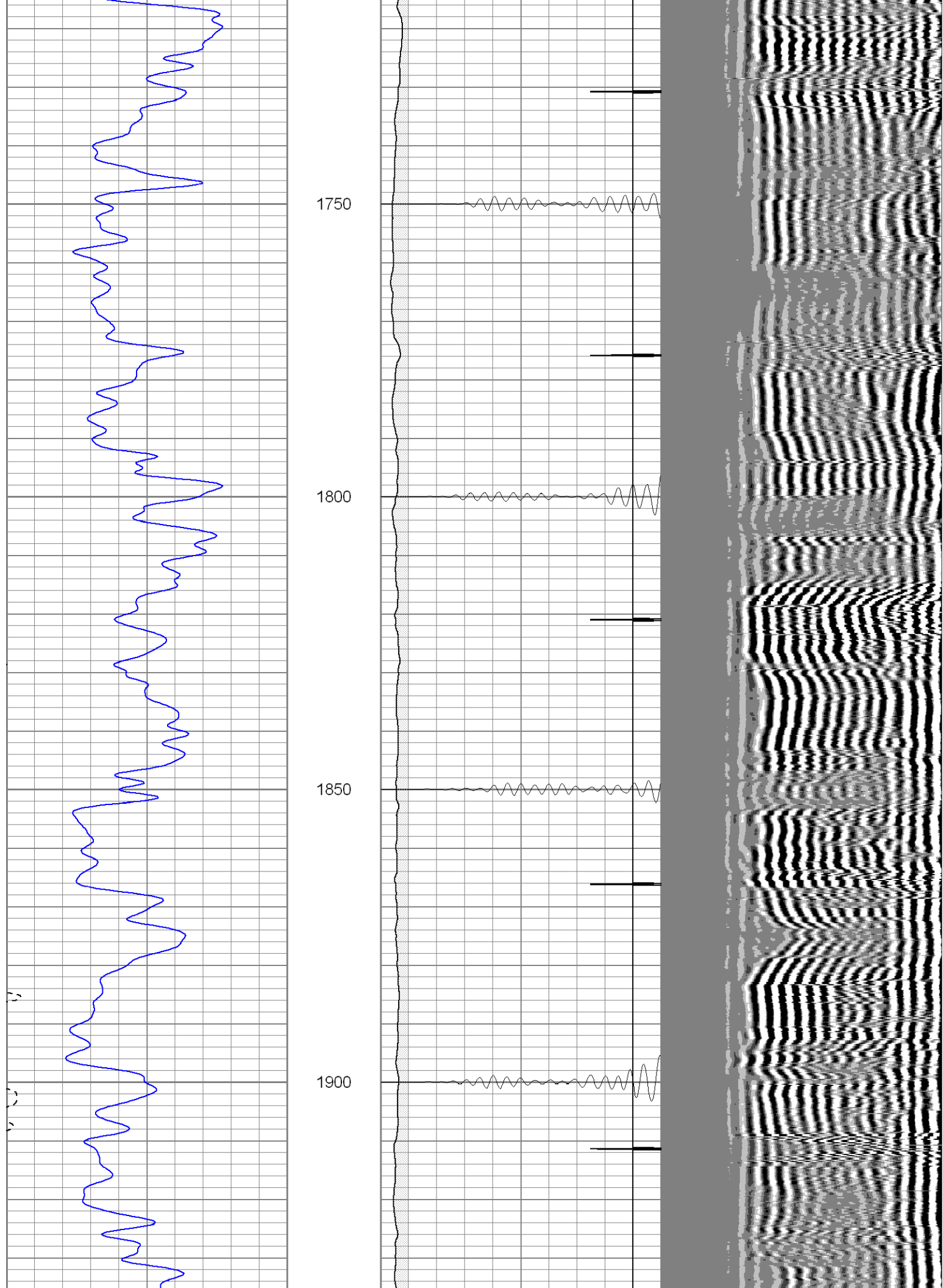
1550

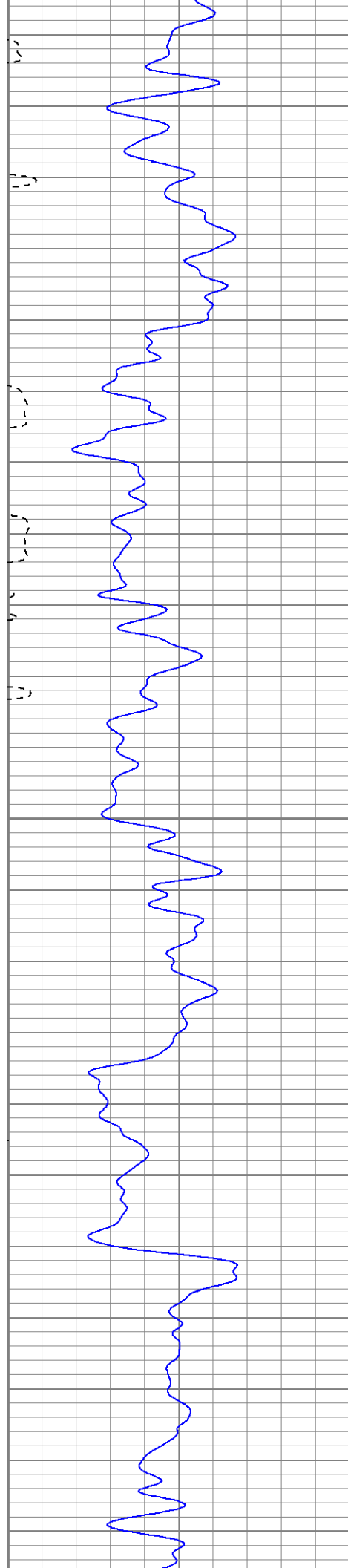
1600

1650

1700







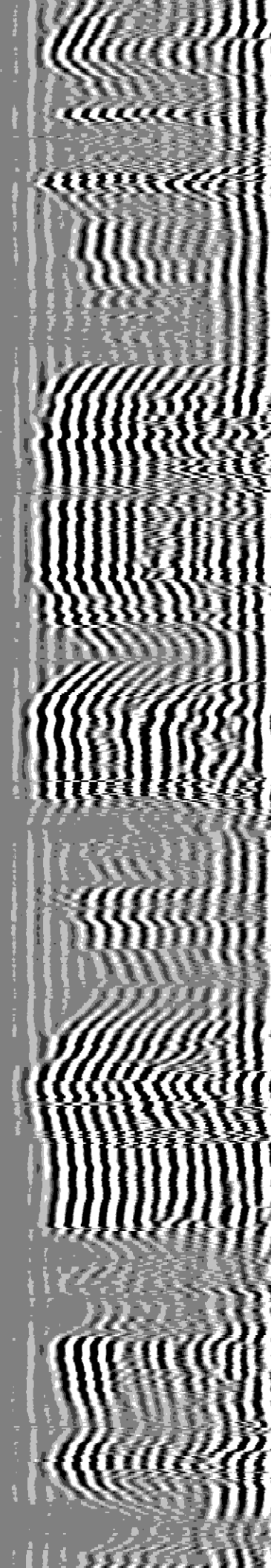
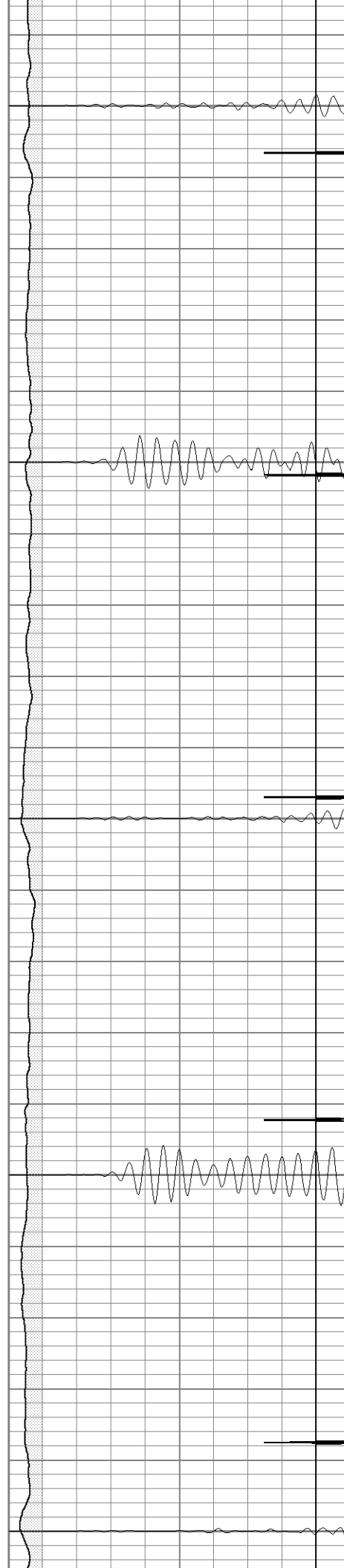
1950

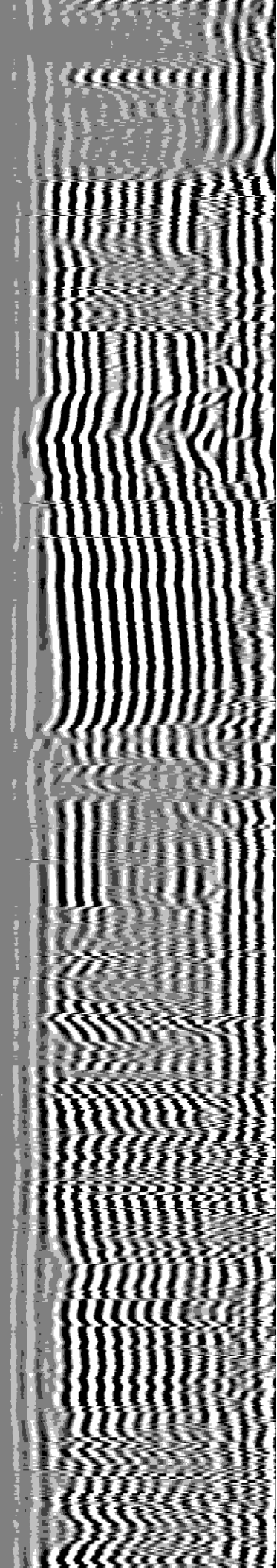
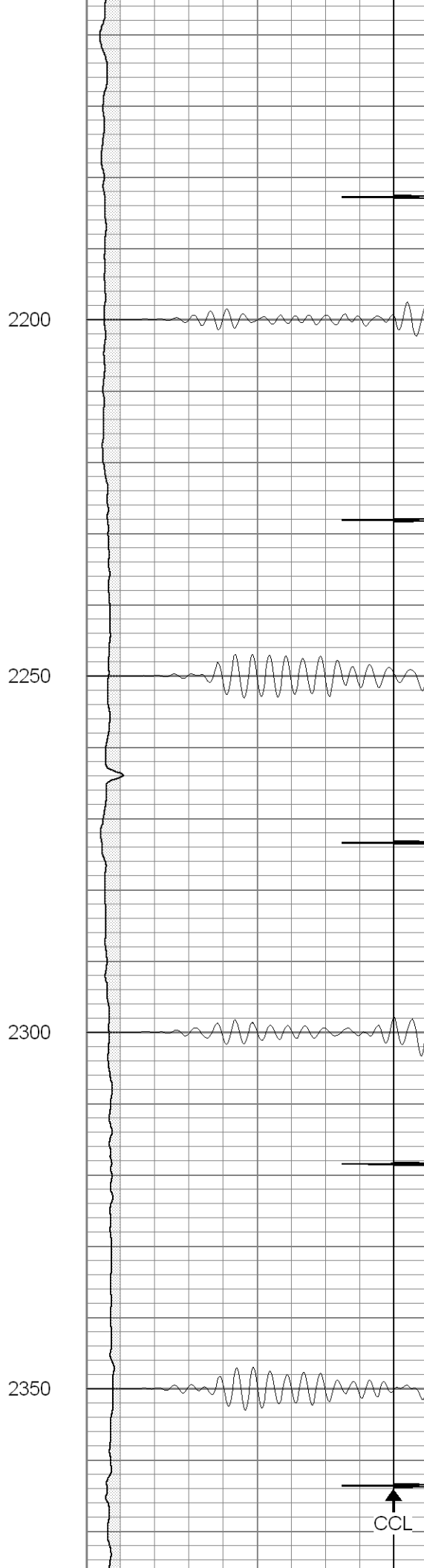
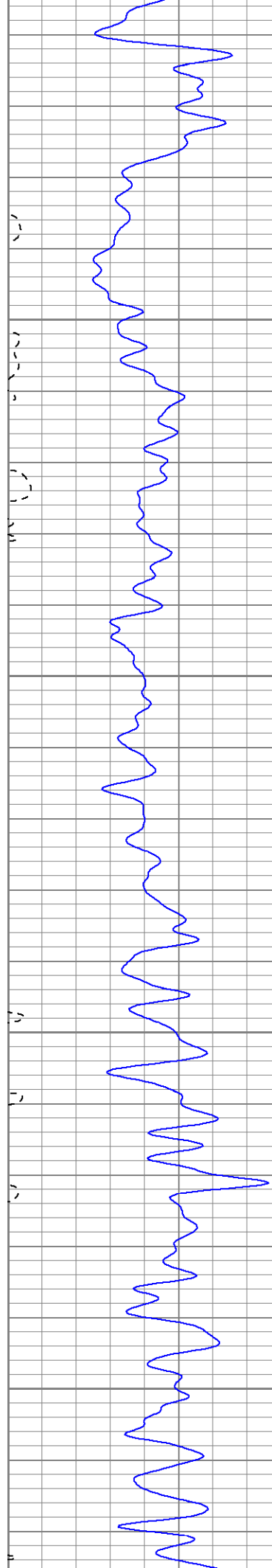
2000

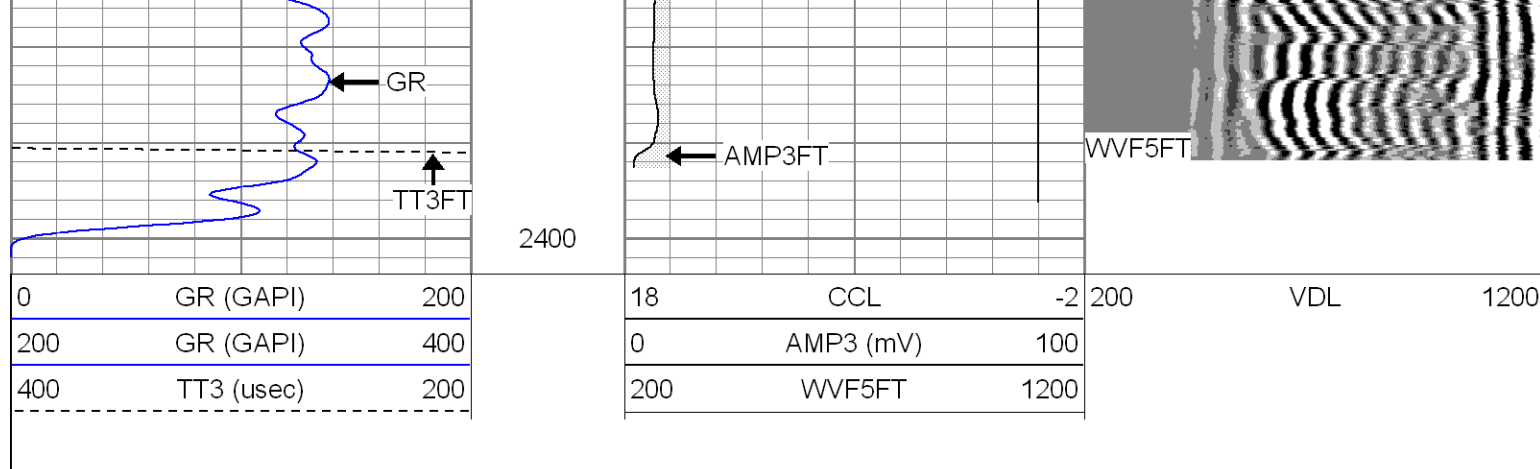
2050

2100

2150





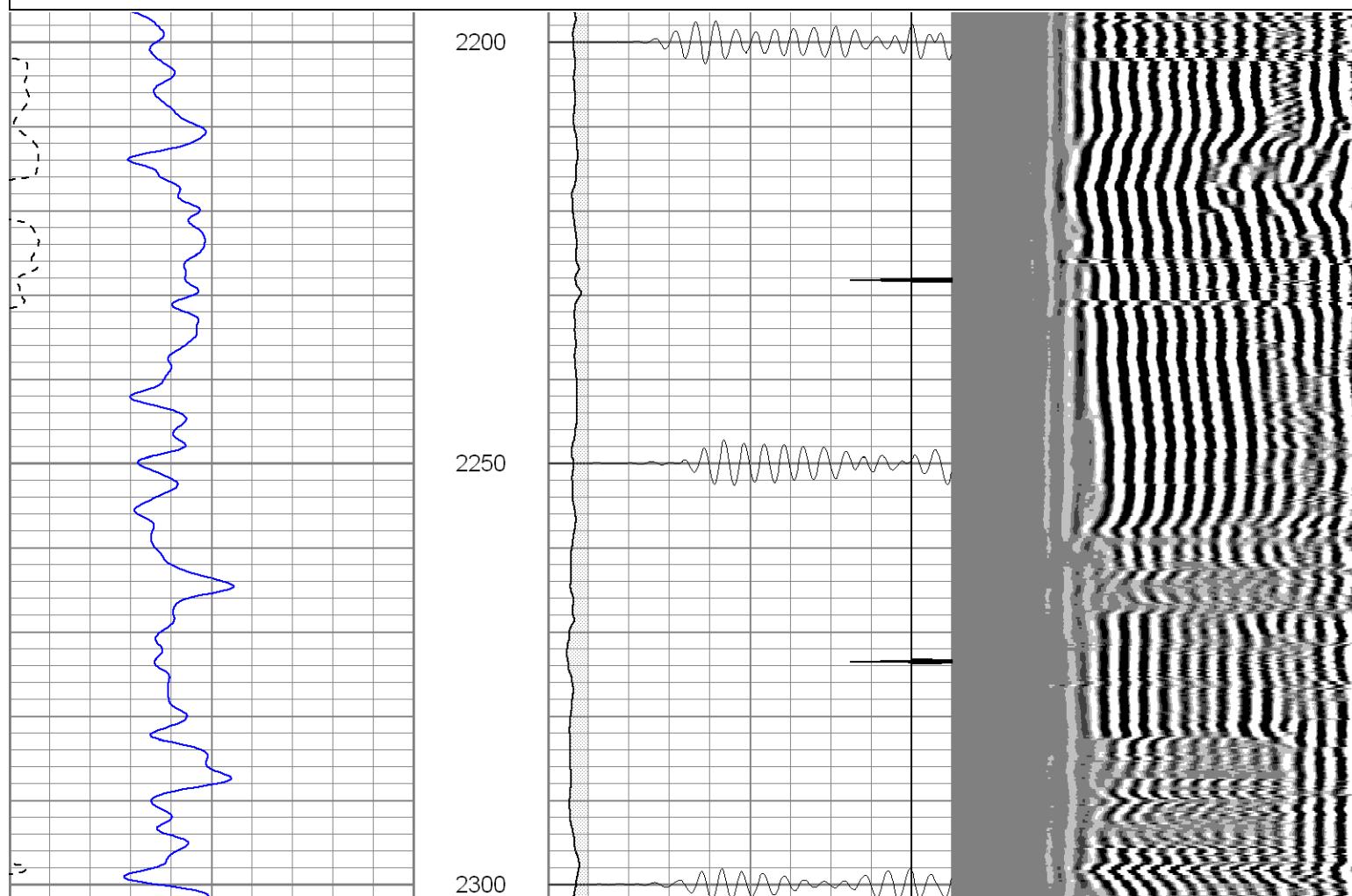
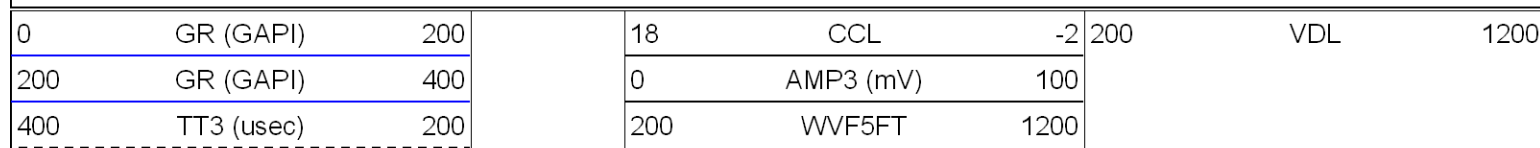


**SUPERIOR**

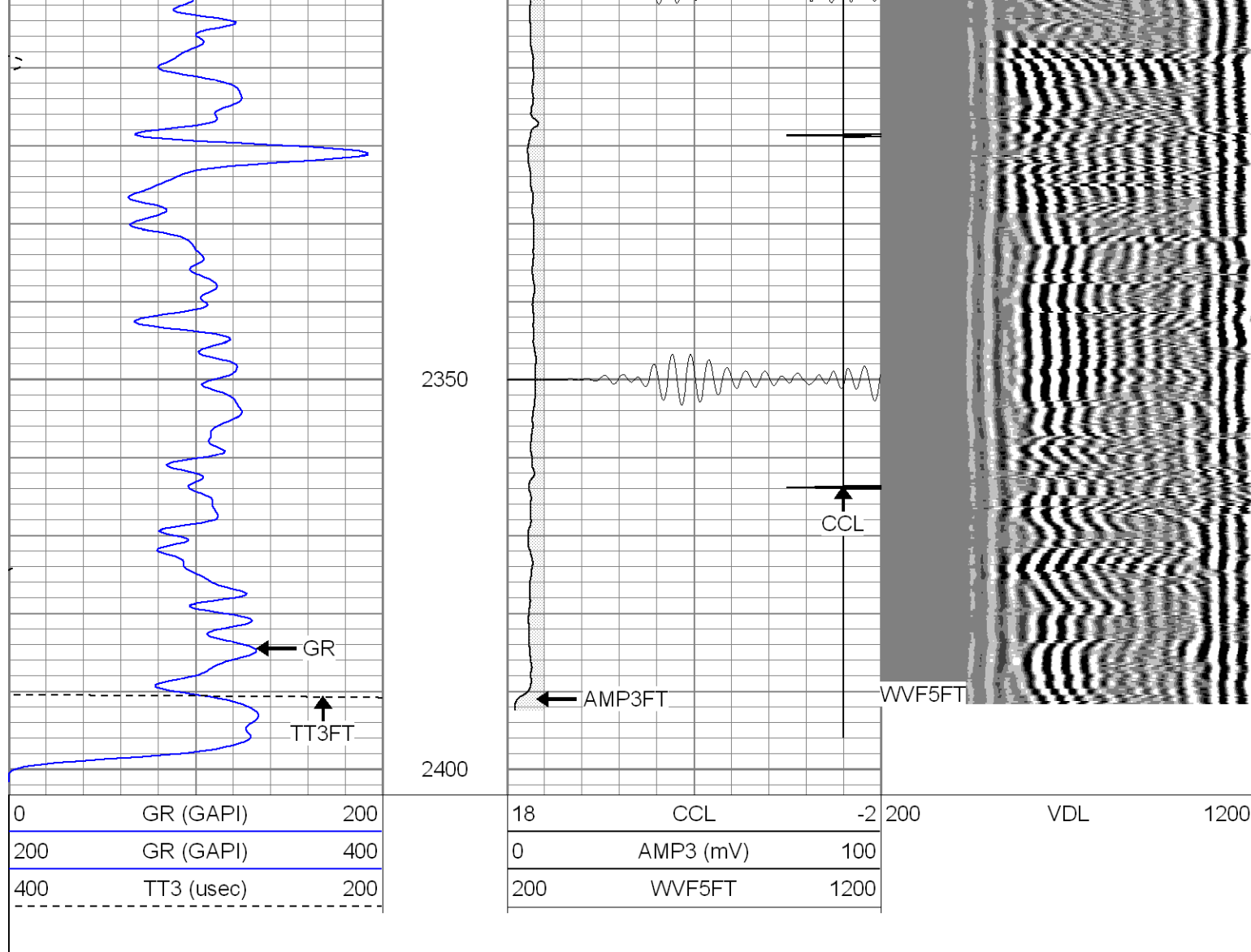
Black Lick, Pa.  
Mercer, Pa.  
Wooster, Oh.  
Cleveland, Ok.  
Trinidad, Co.

# Repeat Section 0 PSI

Database File: ne24-15b52908.db  
 Dataset Pathname: pass1.1  
 Presentation Format: cblsec  
 Dataset Creation: Thu May 29 09:43:48 2008 by Calc Open-Cased 071220  
 Charted by: Depth in Feet scaled 1:240







### Calibration Report

Database File: ne24-15b52908.db  
 Dataset Pathname: pass1.1  
 Dataset Creation: Thu May 29 09:43:48 2008 by Calc Open-Cased 071220

### Gamma Ray Calibration Report

Serial Number: 2.75  
 Tool Model: T3  
 Performed: Thu May 29 09:33:41 2008

Calibrator Value: 1.0 GAPI

Background Reading: 0.0 cps  
 Calibrator Reading: 1.0 cps

Sensitivity: 0.3500 GAPI/cps

### Segmented Cement Bond Log Calibration Report

Serial Number: 080321  
 Tool Model: ProbeRadII

Calibration Casing Diameter: 5.500 in  
 Calibration Depth: 377.183 ft

Master Calibration, performed Thu May 29 09:30:50 2008:



--

Dataset:	ne24-15b52908.db: field/well/run1/pass1.1
Total Length:	20.23 ft
Total Weight:	196.50 lb
O.D.	2.75 in

Dataset:	ne24-15b52908.db: field/well/run1/pass1.1
Total Length:	20.23 ft
Total Weight:	196.50 lb
O.D.	2.75 in