



**SUPERIOR**  
Black Lick, Pa.  
Mercer, Pa.  
Wooster, Oh.  
Cleveland, Ok.  
Trinidad, Co.

## CEMENT BOND GAMMA RAY LOG

Company XTO Energy Inc.  
Well New Elk 24-16  
Field Purgatorie River  
County Las Animas  
State CO

Company XTO Energy Inc.  
Well New Elk 24-16  
Field Purgatorie River  
County Las Animas  
State CO

Location:

API # : 05 071 09473 00  
517' FSL & 1045' FEL

SEC 24 TWP 33S RGE 68W

Permanent Datum Ground Level Elevation 7693'  
Log Measured From Ground Level  
Drilling Measured From Ground Level

Other Services  
Pressure  
Control/  
temp.  
Elevation  
K.B. -----  
D.F. -----  
G.L. 7693'

Date	3-25-08					
Run Number	One					
Depth Driller	2305'					
Depth Logger	2233'					
Bottom Logged Interval	2232'					
Top Log Interval	Surface					
Open Hole Size	7 7/8"					
Type Fluid	Water					
Density / Viscosity	///					
Max. Recorded Temp.	134F					
Estimated Cement Top	34'					
Time Well Ready	ROA					
Time Logger on Bottom	3:00 PM					
Equipment Number	T0698					
Location	Trinidad					
Recorded By	J Sisneros					
Witnessed By	Mr. Ryan Rensink					
Borehole Record					Tubing Record	
Run Number	Bit	From	To	Size	Weight	From To
Casing Record	Size		Wgt/Ft		Top	Bottom
Surface String	8 5/8"				00	496'
Prot. String						
Production String	5 1/2"				00	N/A
Liner						

<<< Fold Here >>>

All interpretations are opinions based on inferences from electrical or other measurements and we cannot and do not guarantee the accuracy or correctness of any interpretation, and we shall not, except in the case of gross or willful negligence on our part, be liable or responsible for any loss, costs, damages, or expenses incurred or sustained by anyone resulting from any interpretation made by any of our officers, agents or employees. These interpretations are also subject to our general terms and conditions set out in our current Price Schedule.

### Comments

Second Bosque entrance four miles past Weston, over old tracks,  
@ Y stay right towards Apache canyon, past windmill, drive thru one location  
next right up hill, drive thru one location, at Y stay right, dead end on location



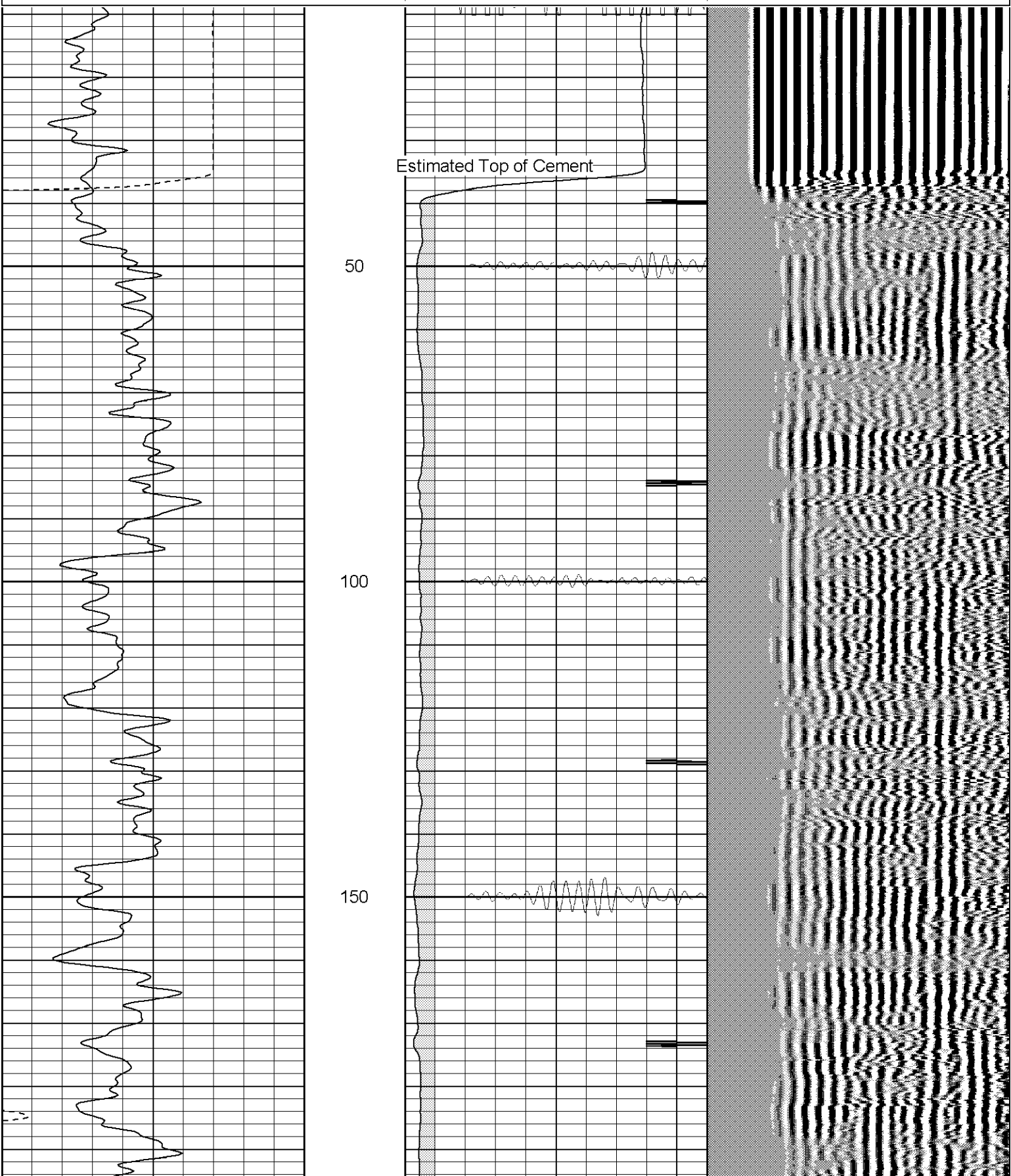
**SUPERIOR**

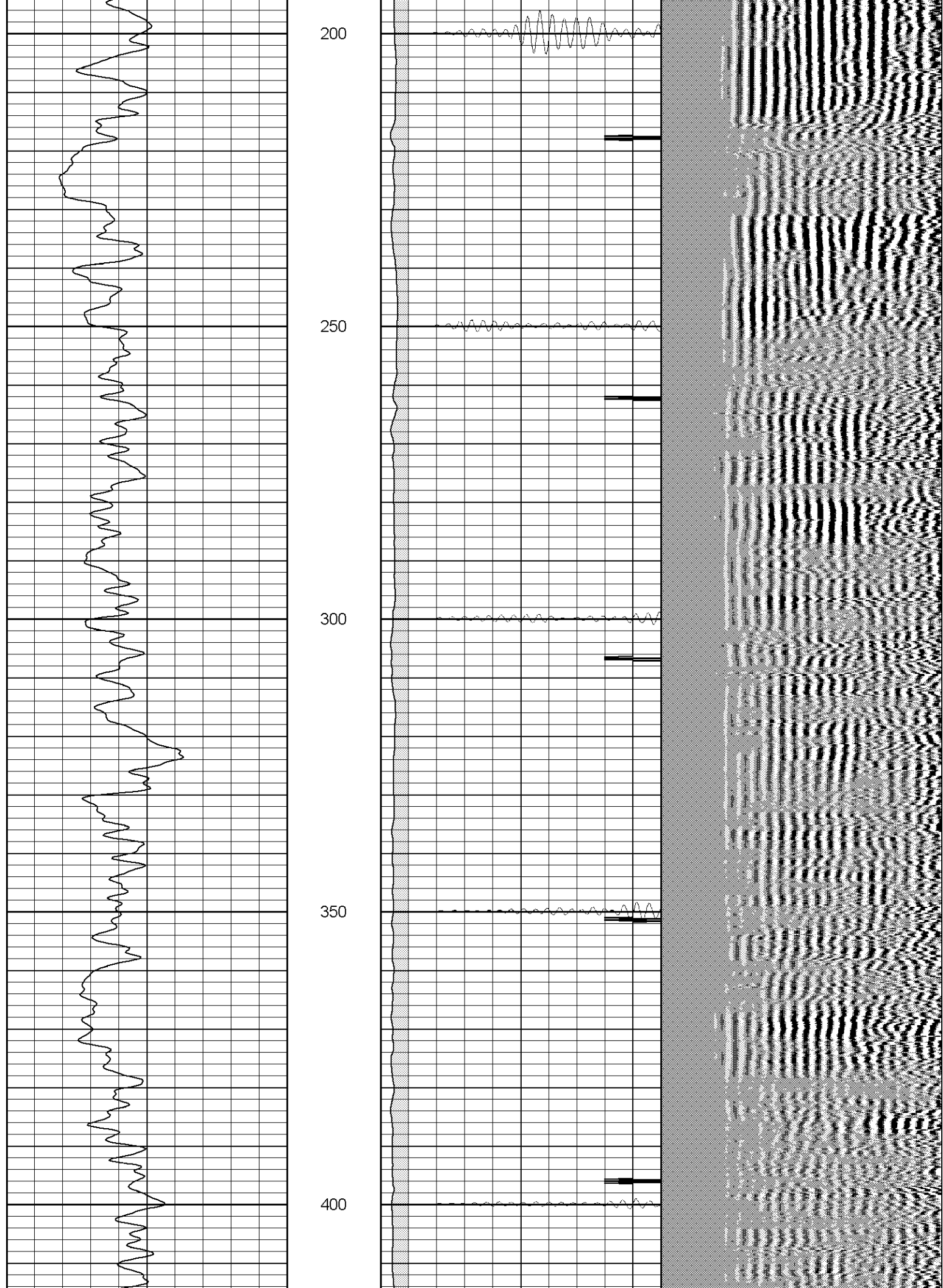
Black Lick, Pa.  
Mercer, Pa.  
Wooster, Oh.  
Cleveland, Ok.  
Trinidad, Co.

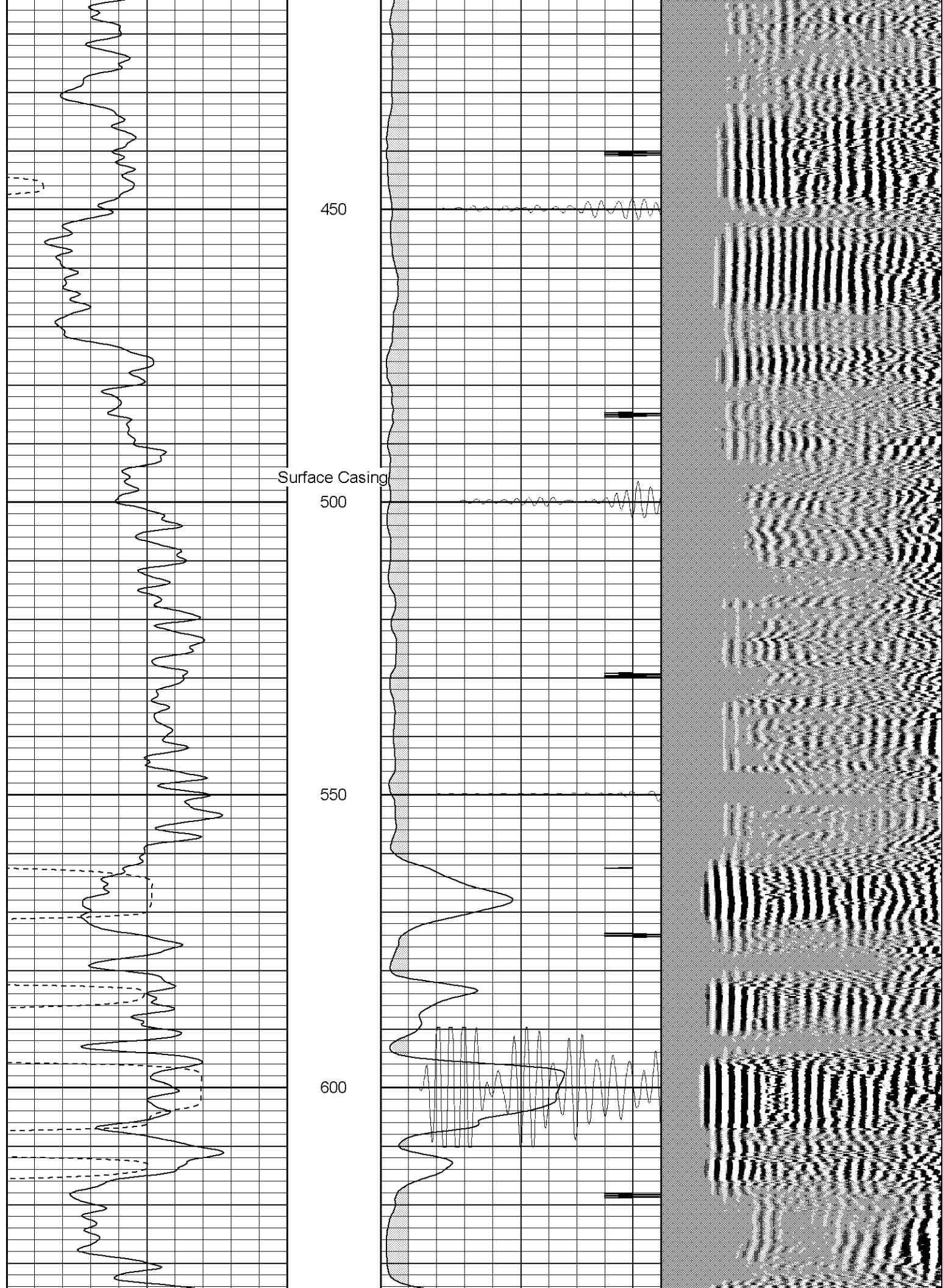
# Main Pass (1000PSI)

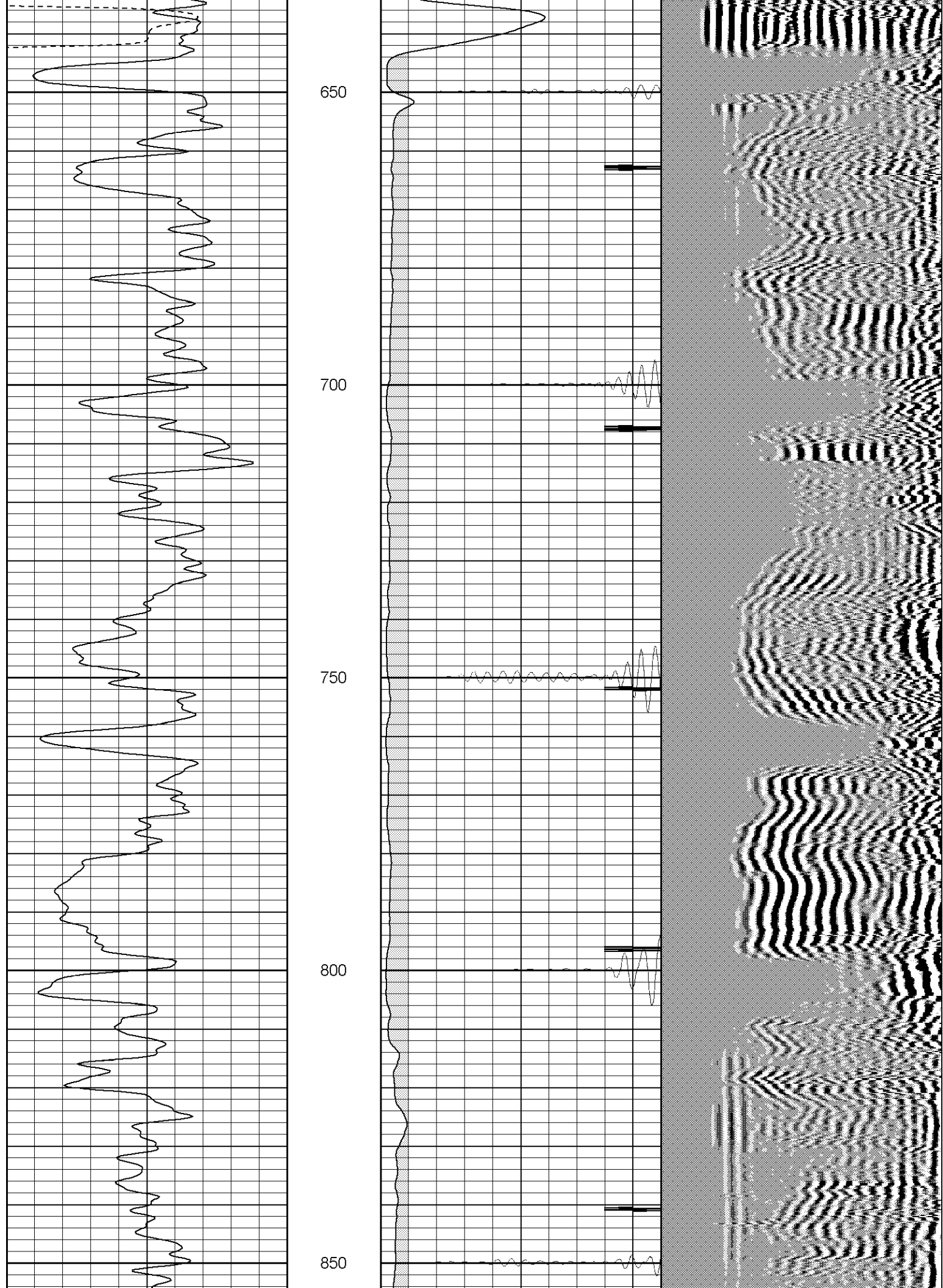
Database File: ne2416033108b.db  
Dataset Pathname: pass2.1  
Presentation Format: cblrt  
Dataset Creation: Mon Mar 31 08:58:06 2008 by Calc Open-Cased 070814  
Charted by: Depth in Feet scaled 1:240

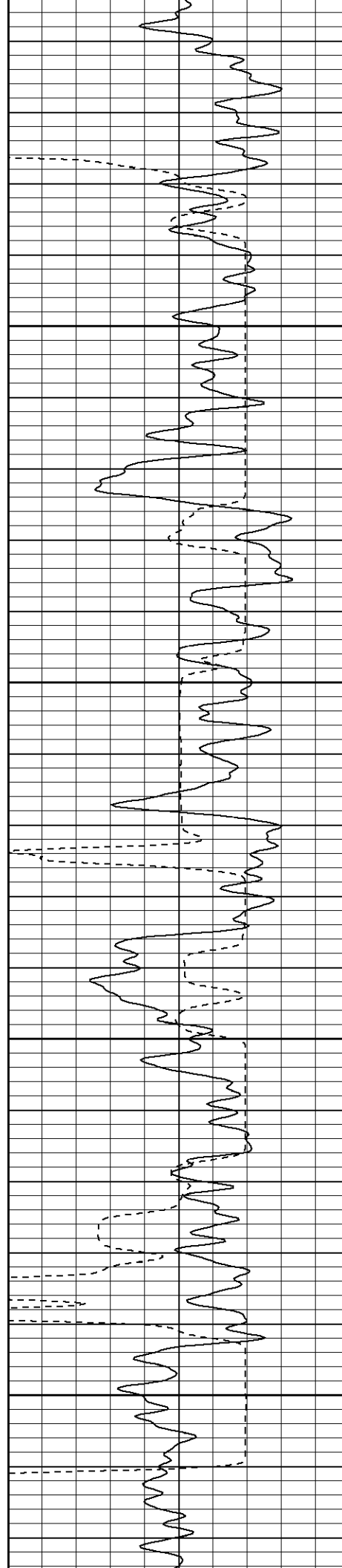
0	GR (GAPI)	200	0	AMP3 (mV)	100	200	Variable Density	1200
400	TT3 (usec)	200	18	CCL	-2			
			200	CBL5	1200			









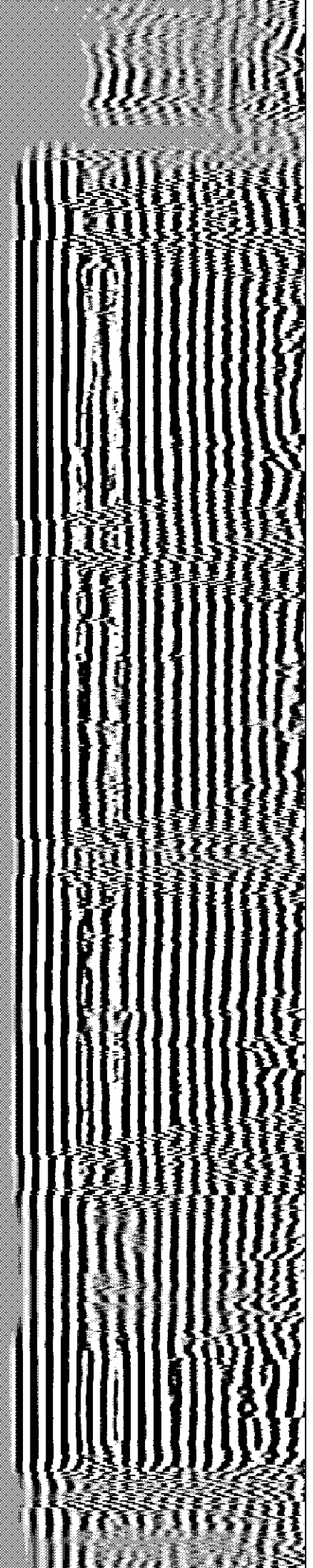
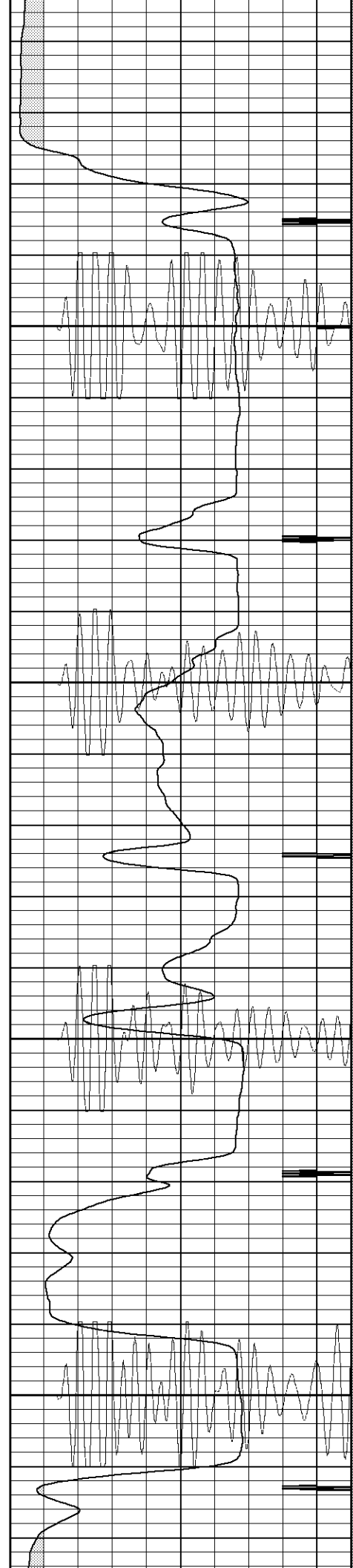


900

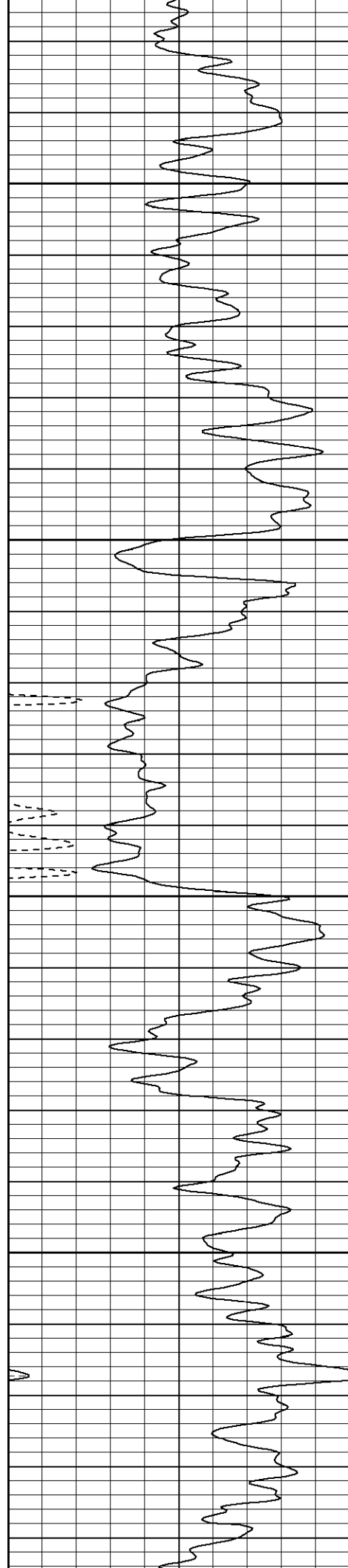
950

1000

1050





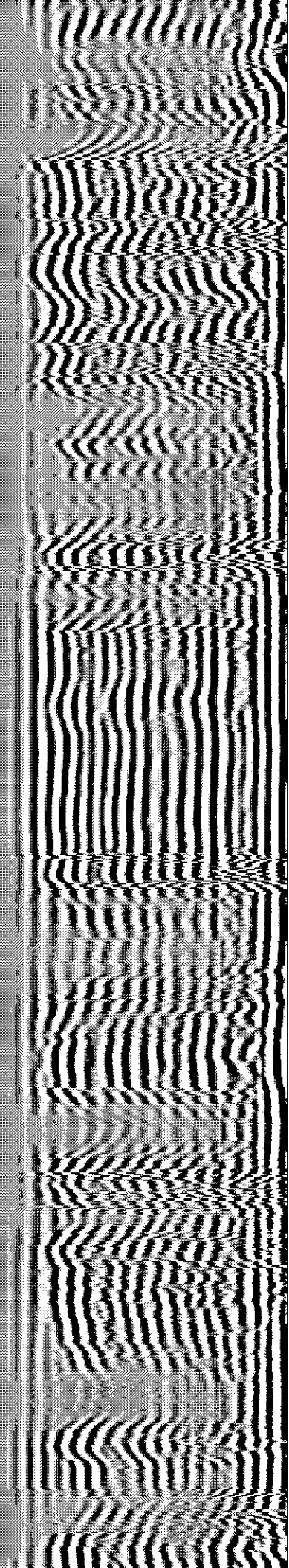
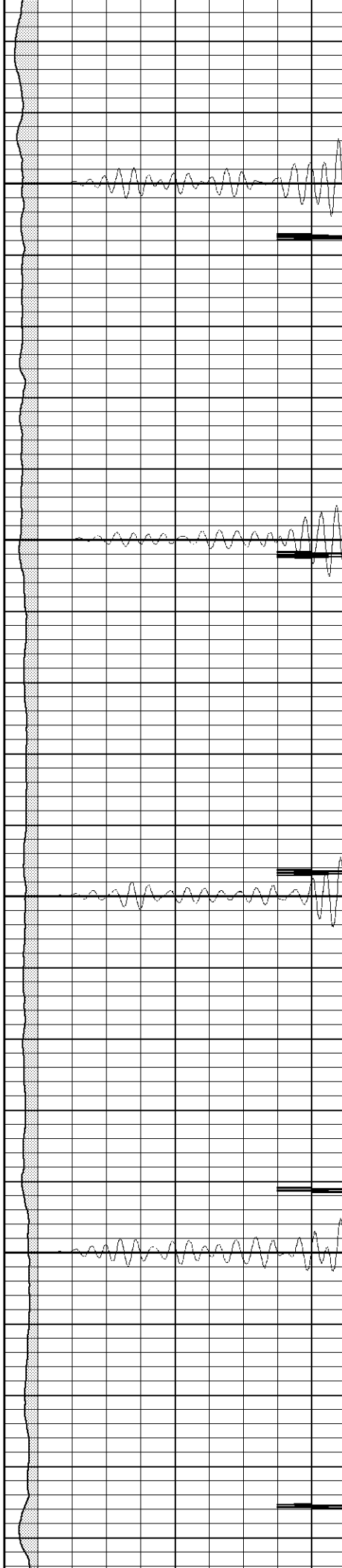


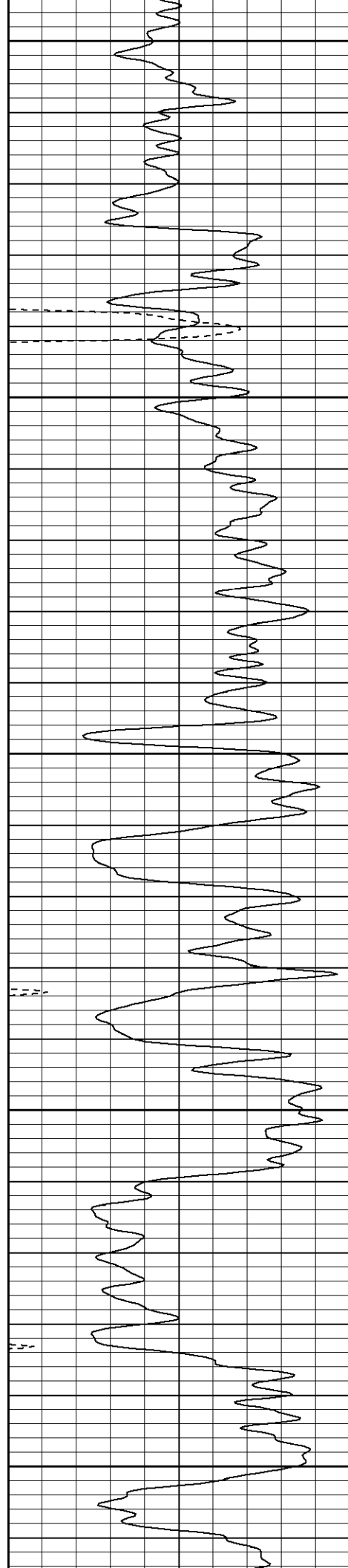
1100

1150

1200

1250





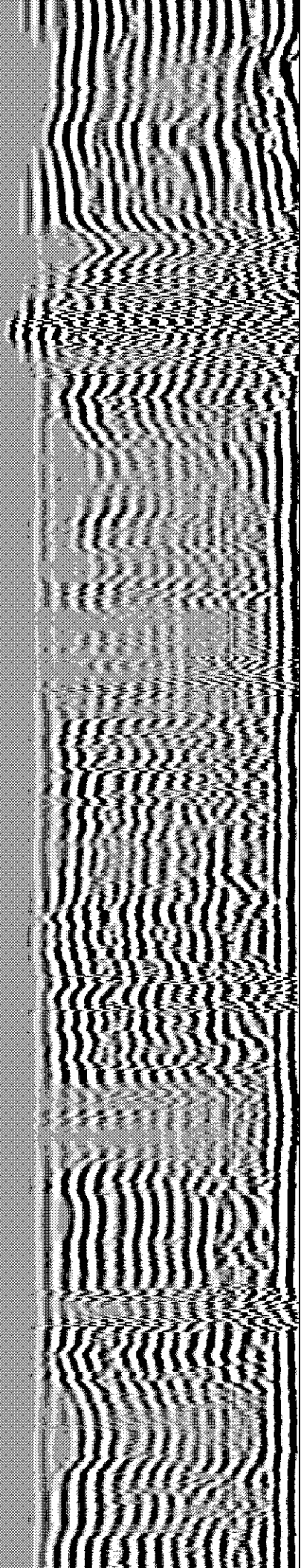
1300

1350

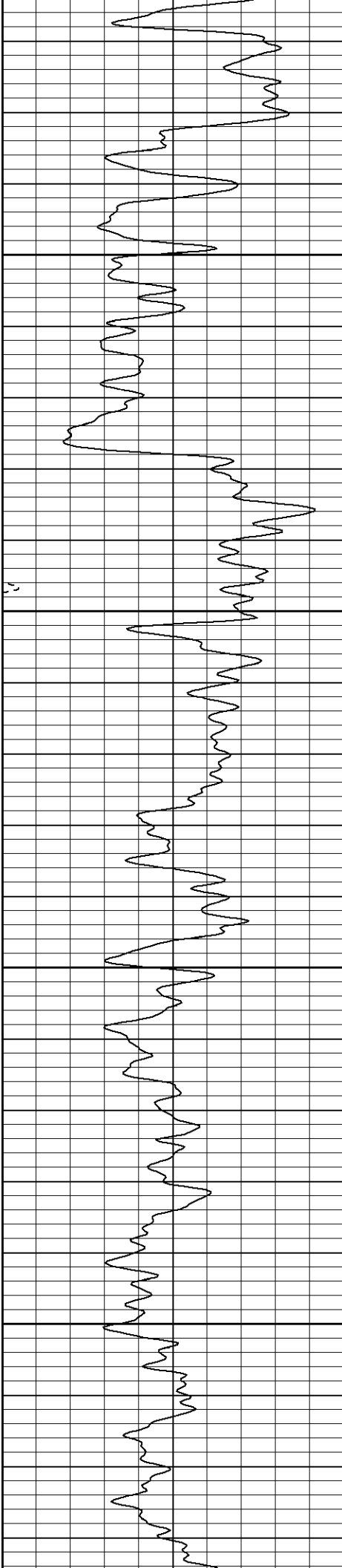
1400

1450

1500





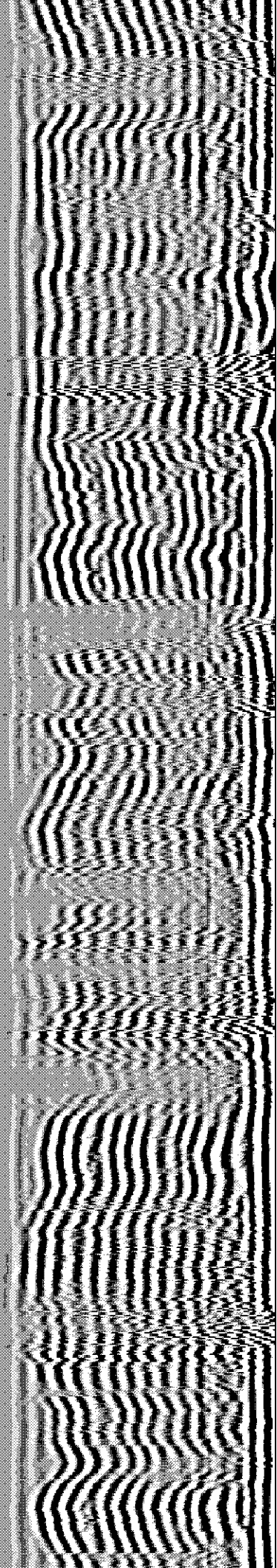
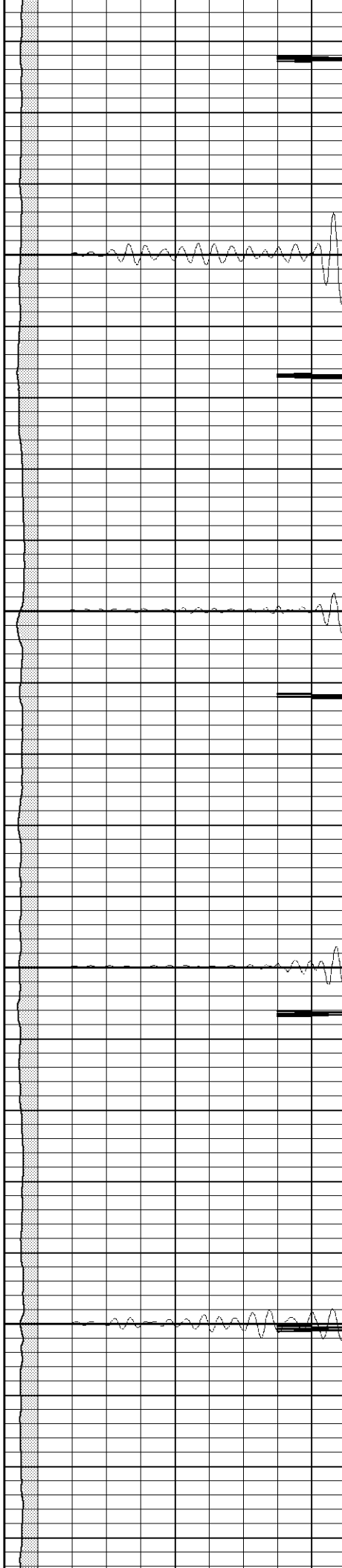


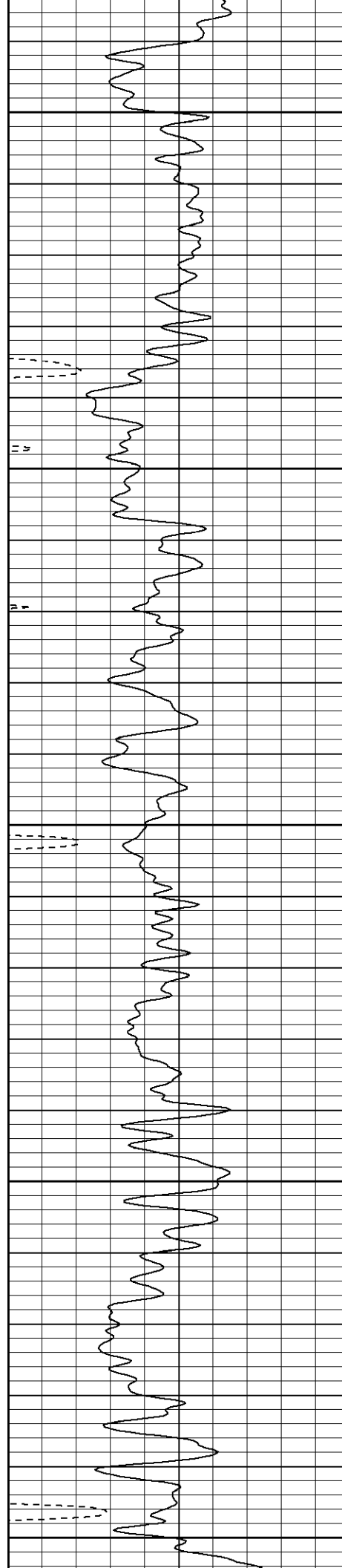
1550

1600

1650

1700





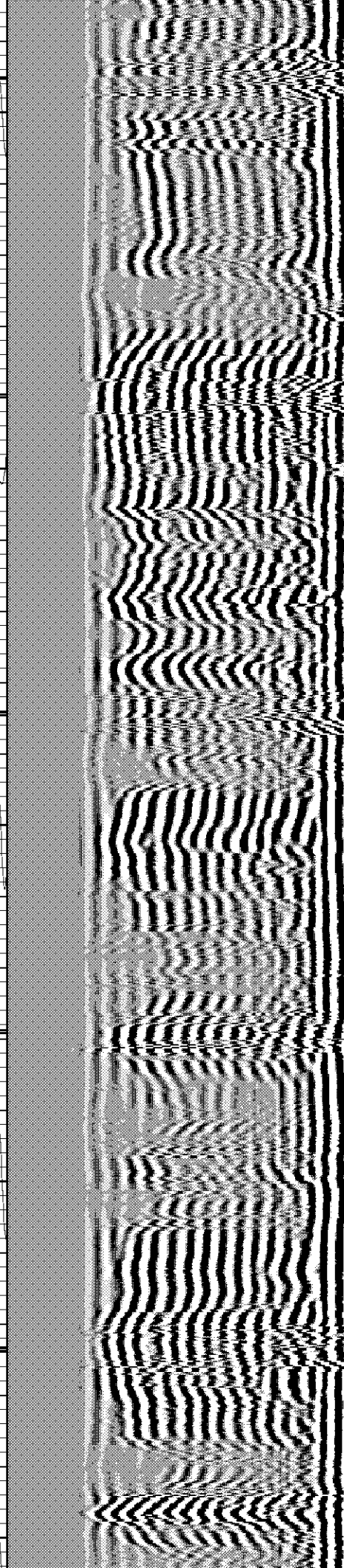
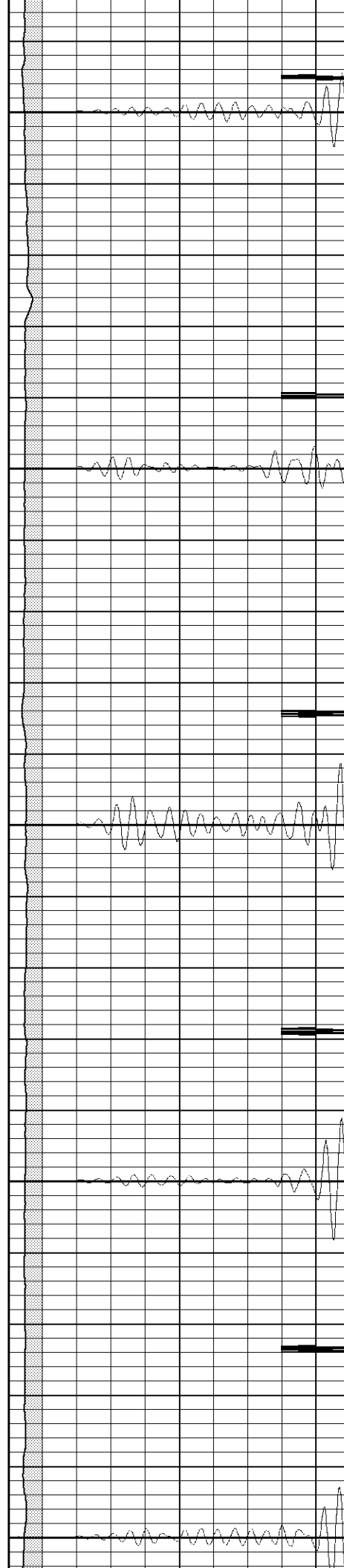
1750

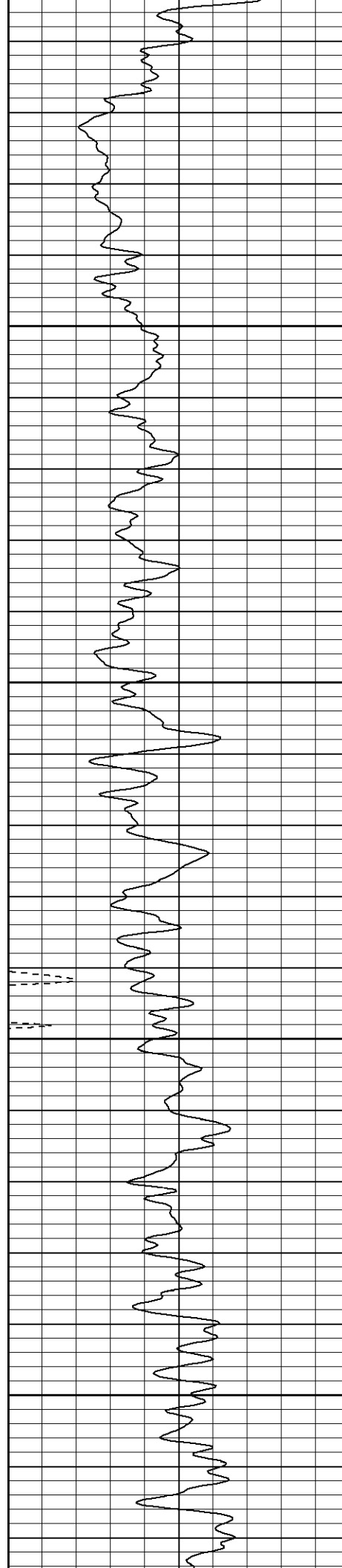
1800

1850

1900

1950



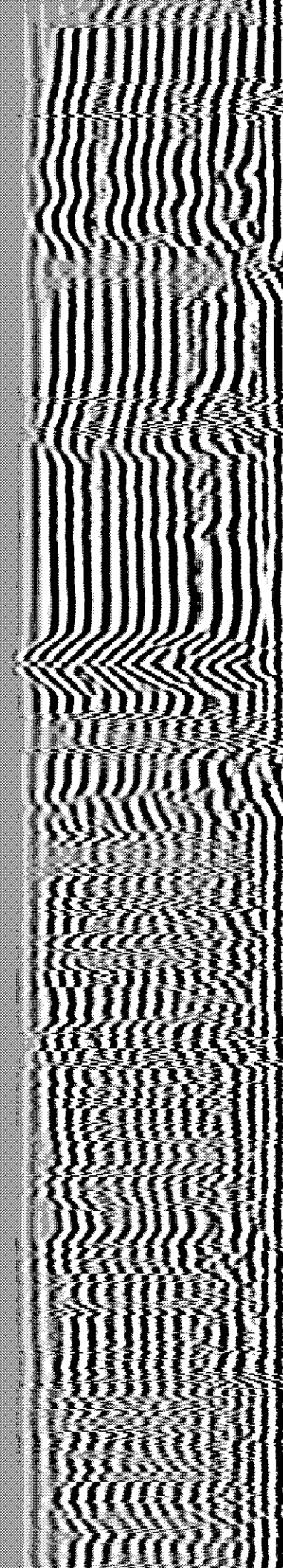
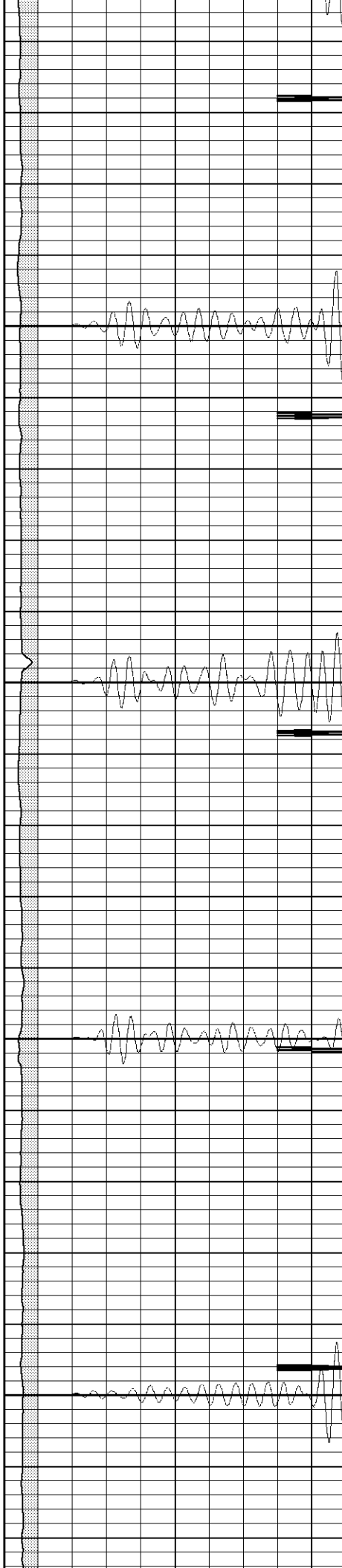


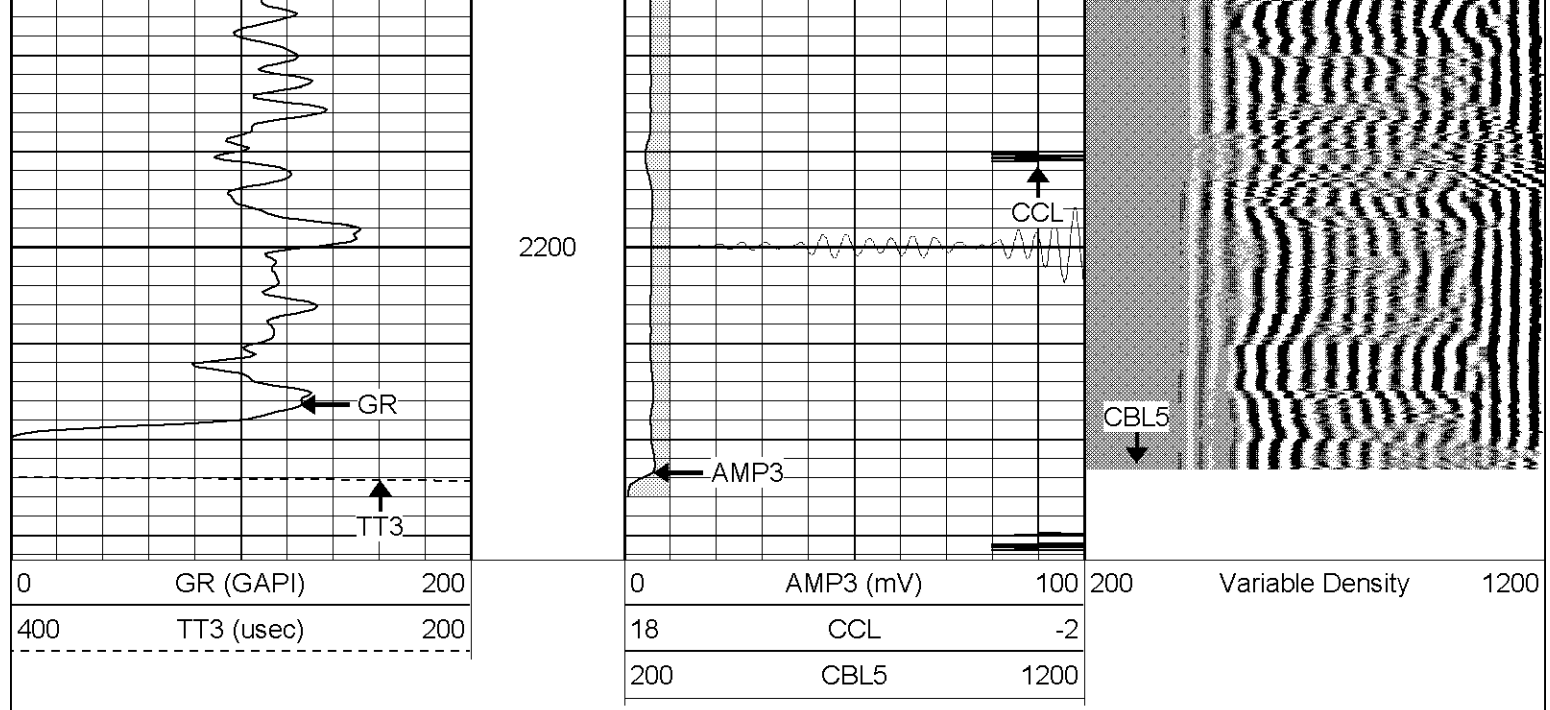
2000

2050

2100

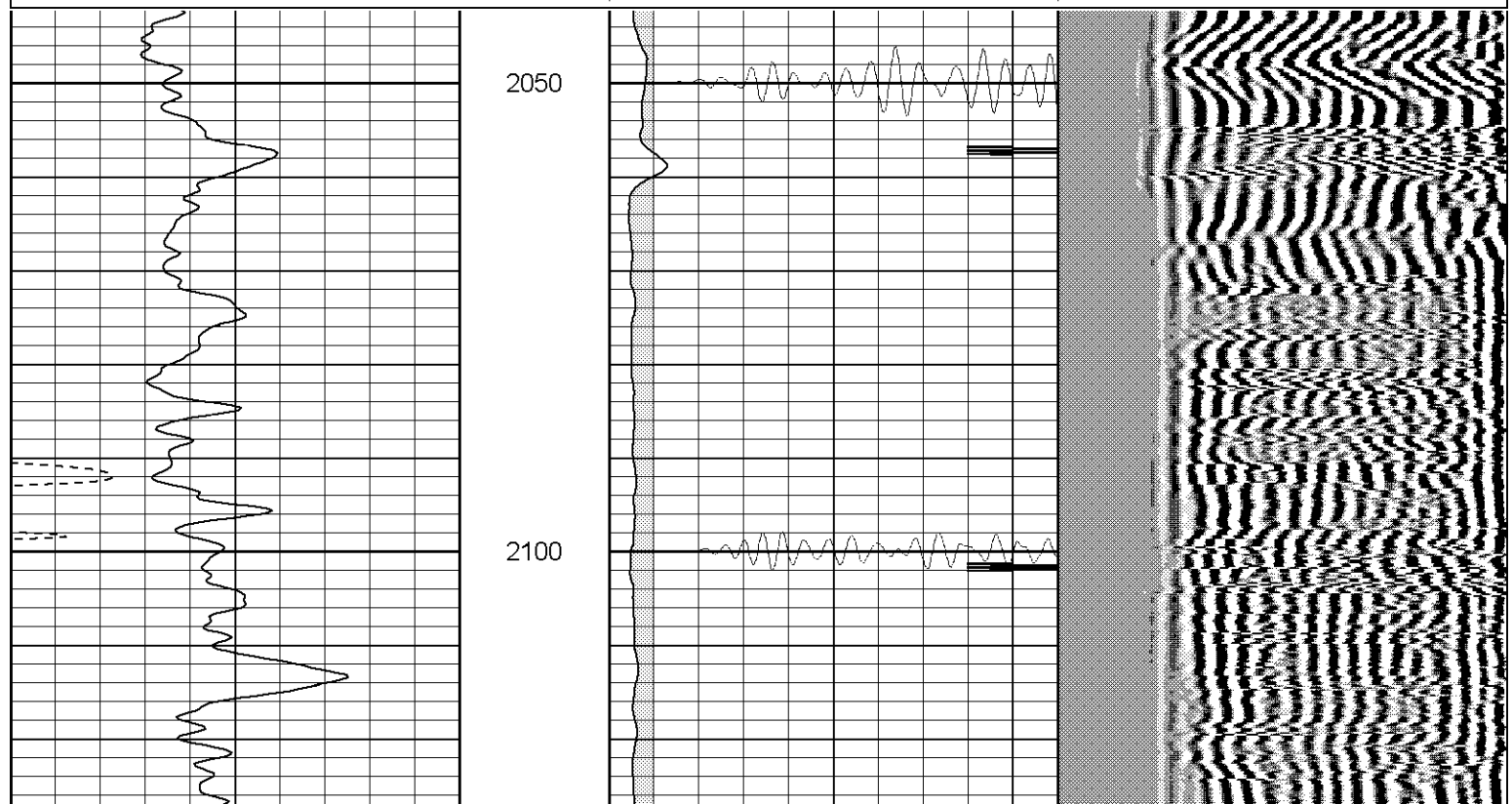
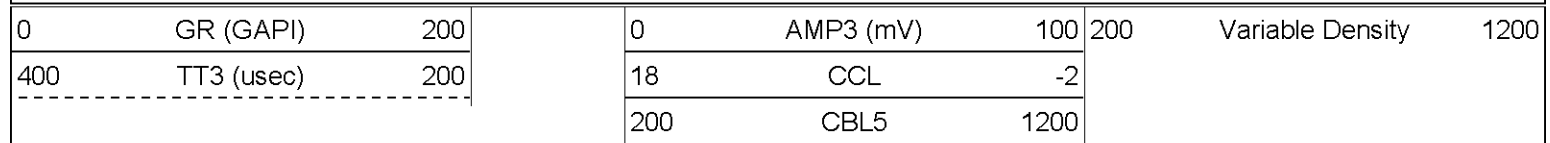
2150

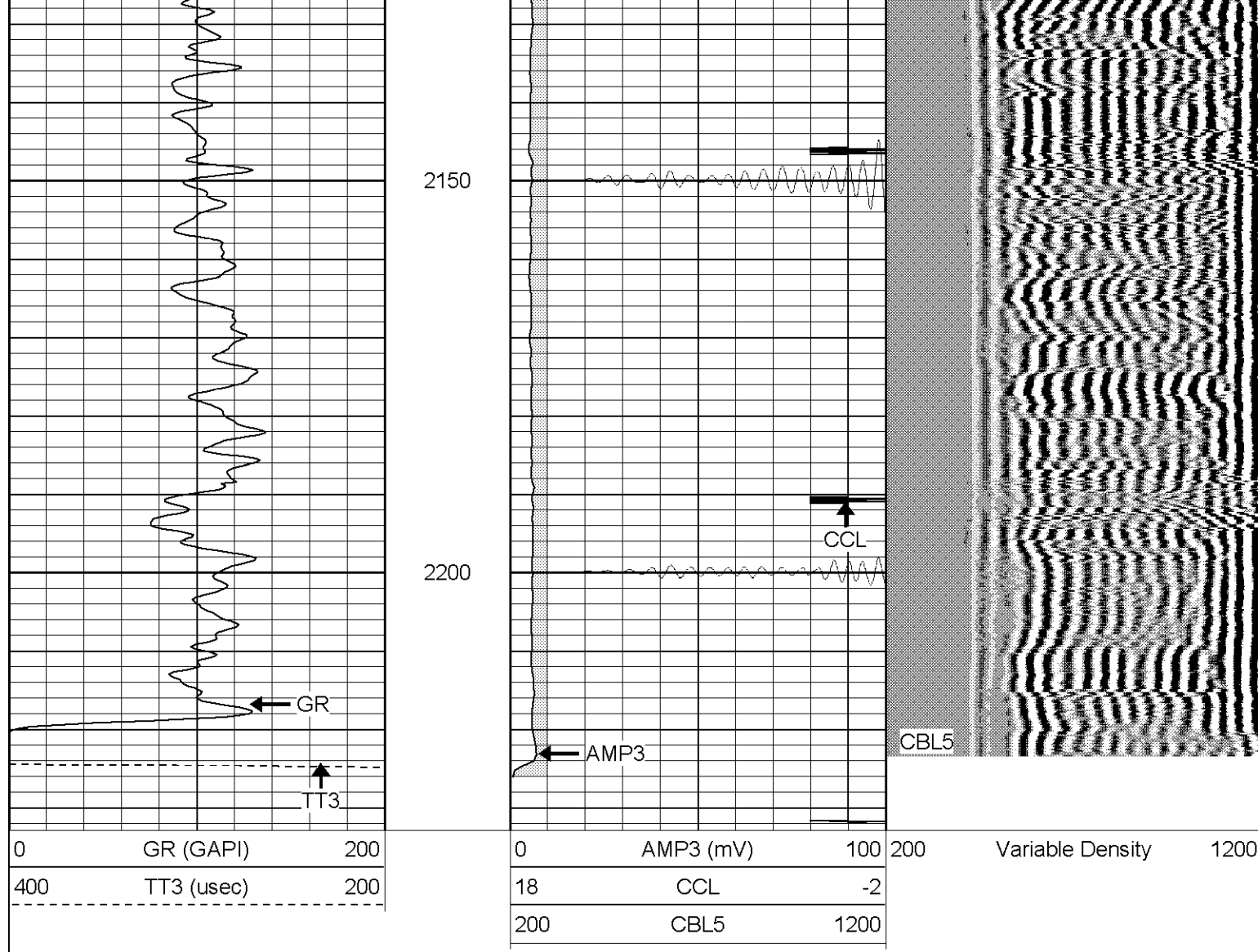




# Repeat Section (0PSI)

Database File: ne2416033108b.db  
 Dataset Pathname: pass1  
 Presentation Format: cblrt  
 Dataset Creation: Mon Mar 31 07:50:51 2008 by Log Open-Cased 070814  
 Charted by: Depth in Feet scaled 1:240





### Calibration Report

Database File: ne2416033108b.db  
 Dataset Pathname: pass1  
 Dataset Creation: Mon Mar 31 07:50:51 2008 by Log Open-Cased 070814

### Cement Bond Log Calibration Report

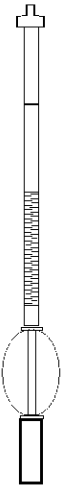
Serial Number:	Titan6		
Tool Model:	T6		
Performed:	Mon Mar 10 08:35:38 2008		
Depth:	206.576	ft	
Casing Diameter:	5.5	in	
	3' Spacing	5' Spacing	
Signal Zero:	0	0	mV
Calibrated Amplitude:	85	85	mV
Reading at Signal Zero:	0.0194092	0	V
Reading in Free Pipe:	1.45	1.2	V
Gain:	59.416	70.8333	
Offset:	1	0	

### Gamma Ray Calibration Report

Serial Number:	Titan6
Tool Model:	T6
Performed:	Mon Mar 10 08:35:38 2008

Sat Mar 08 08:36:13 2008

Calibrator Value:	0.0	GAPI
Background Reading:	1.0	cps
Calibrator Reading:	0.0	cps
Sensitivity:	1.2000	GAPI/cps

Sensor	Offset (ft)	Schematic	Description	Len (ft)	OD (in)	Wt (lb)	
GR	13.64		CHD-None (0)	0.75	1.50	5.00	
			GR-T6 (Titan6)	2.52	2.25	25.00	
WVF5	9.49						
WVF3	8.49			CBL-T6 (Titan6)	7.23	2.25	110.00
				CENT-X (2)	3.00	1.69	25.00
CCL	0.81		CCL-T6long (Titan6long)	2.15	2.75	15.00	
Dataset: ne2416033108b.db: field/well/run1/pass1 Total Length: 15.66 ft Total Weight: 180.00 lb O.D. 2.75 in							