



**SUPERIOR**  
Black Lick, Pa.  
Mercer, Pa.  
Wooster, Oh.  
Cleveland, Ok.  
Trinidad, Co.

# CEMENT BOND GAMMA RAY 1000 PSI

Company XTO Energy Inc.  
Well Hill Ranch East 23-07  
Field Purgatorie River  
County Las Animas  
State CO

Company XTO Energy Inc.  
Well Hill Ranch East 23-07  
Field Purgatorie River  
County Las Animas  
State CO

Location: API # : 05 071 09448 00

1364' FNL & 2623' FEL

SEC 23 TWP 34S RGE 67W

Permanent Datum Ground Level Elevation 7844'  
Log Measured From Ground Level  
Drilling Measured From Ground Level

Other Services  
TEMP  
Elevation  
K.B. -----  
D.F. -----  
G.L. 7844'

Date		4/18/08					
Run Number		one					
Depth Driller		2550'					
Depth Logger		2437'					
Bottom Logged Interval		2433'					
Top Log Interval		Surf.					
Open Hole Size		7 7/8"					
Type Fluid		water					
Density / Viscosity		///					
Max. Recorded Temp.		144F					
Estimated Cement Top		864'					
Time Well Ready		ROA					
Time Logger on Bottom		8:18					
Equipment Number		0703					
Location		Trinidad					
Recorded By		Worley					
Witnessed By		Mr. Rensink					
Borehole Record		Tubing Record					
Run Number	Bit	From	To	Size	Weight	From	To
Casing Record		Size		Wgt/Ft		Top	Bottom
Surface String		8 5/8"				00	488'
Prot. String							
Production String		5 1/2"				00	NA
Liner							

<<< Fold Here >>>

All interpretations are opinions based on inferences from electrical or other measurements and we cannot and do not guarantee the accuracy or correctness of any interpretation, and we shall not, except in the case of gross or willful negligence on our part, be liable or responsible for any loss, costs, damages, or expenses incurred or sustained by anyone resulting from any interpretation made by any of our officers, agents or employees. These interpretations are also subject to our general terms and conditions set out in our current Price Schedule.

## Comments

Lorencito, 2.2 miles past Compressor station take right (just before XTO hill),  
@ Y stay right up hill, drive thru Lorencito 14-19, @ Top of hill take hard left,  
drive thru Lorencito 9-24, take third left, drive thru a Lorencito location, take next left,  
next drive thru location is Hill Ranch East 23-07.

CBL ran under 1000 PSI.



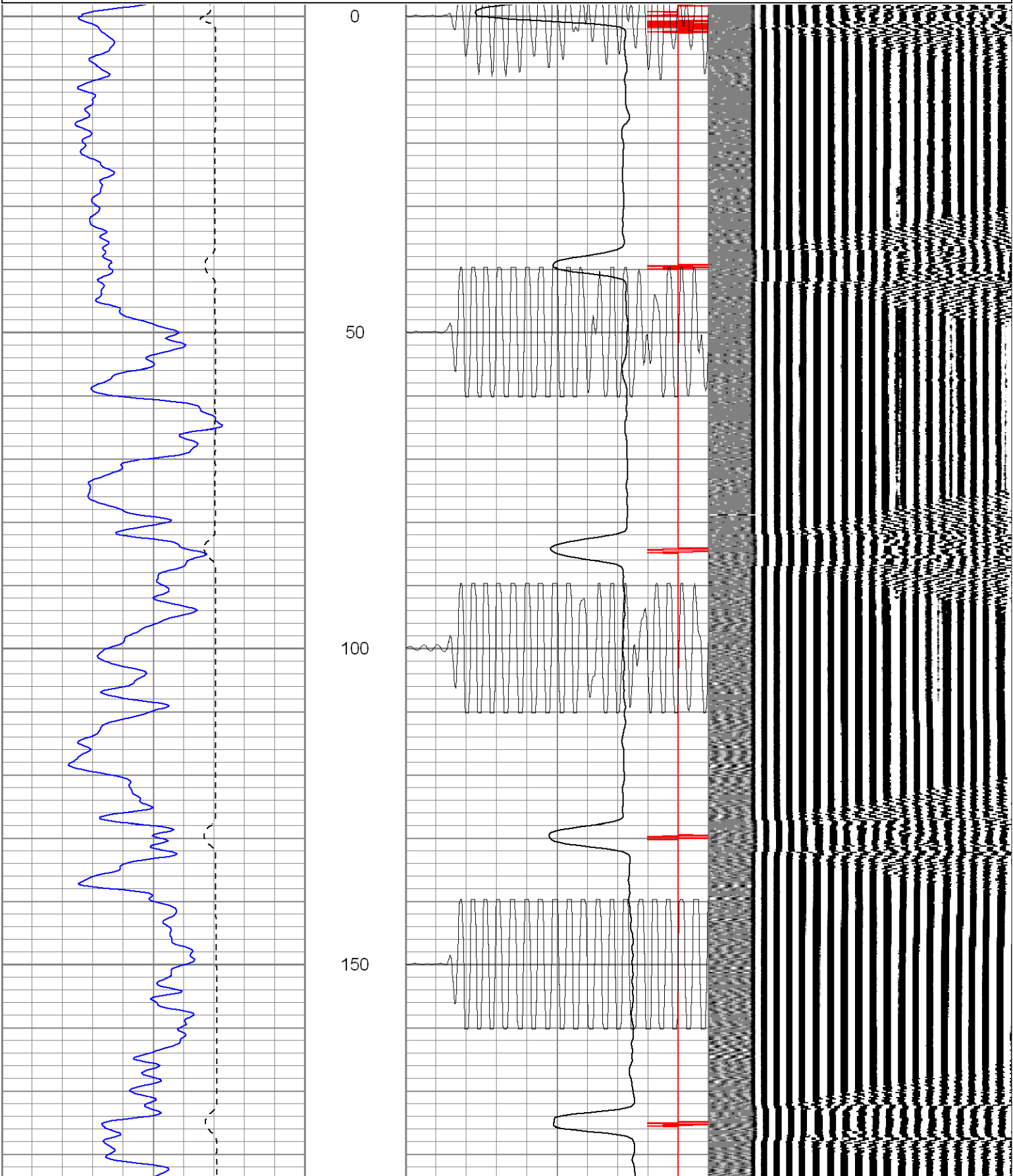
**SUPERIOR**

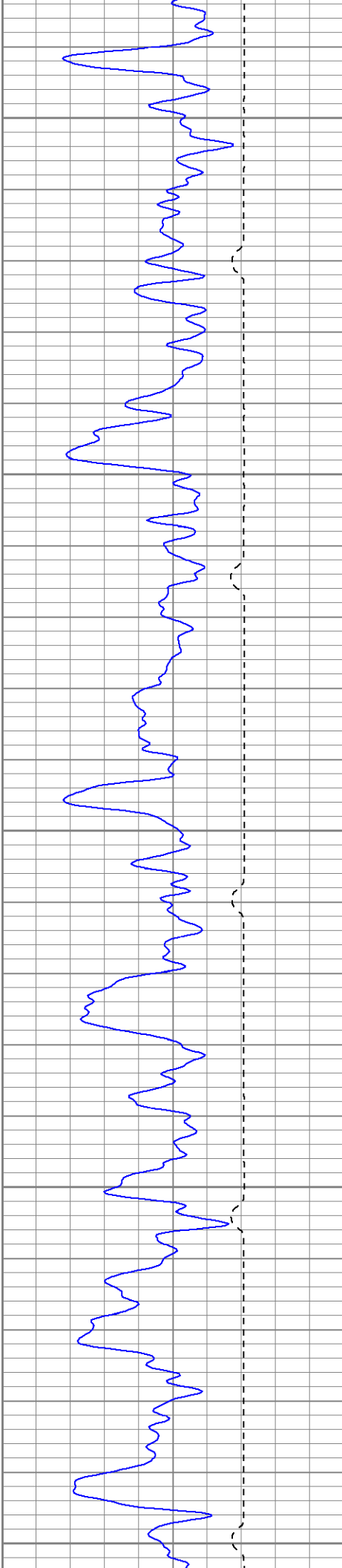
Black Lick, Pa.  
Mercer, Pa.  
Wooster, Oh.  
Cleveland, Ok.  
Trinidad, Co.

# Main Pass 1000 PSI

Database File: hre23-07b41808.db  
Dataset Pathname: pass2  
Presentation Format: cblrt  
Dataset Creation: Fri Apr 18 08:28:15 2008 by Log Open-Cased 071220  
Charted by: Depth in Feet scaled 1:240

0	GR (GAPI)	200	0	AMP3 (mV)	100	200	CBL5	1200
400	TT3 (usec)	200	18	CCL	-2			
			200	CBL5	1200			





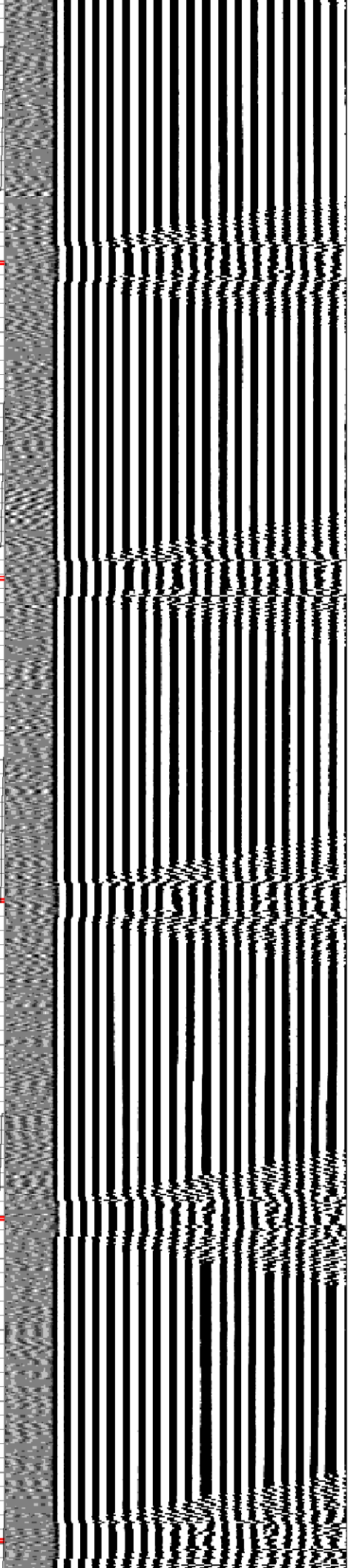
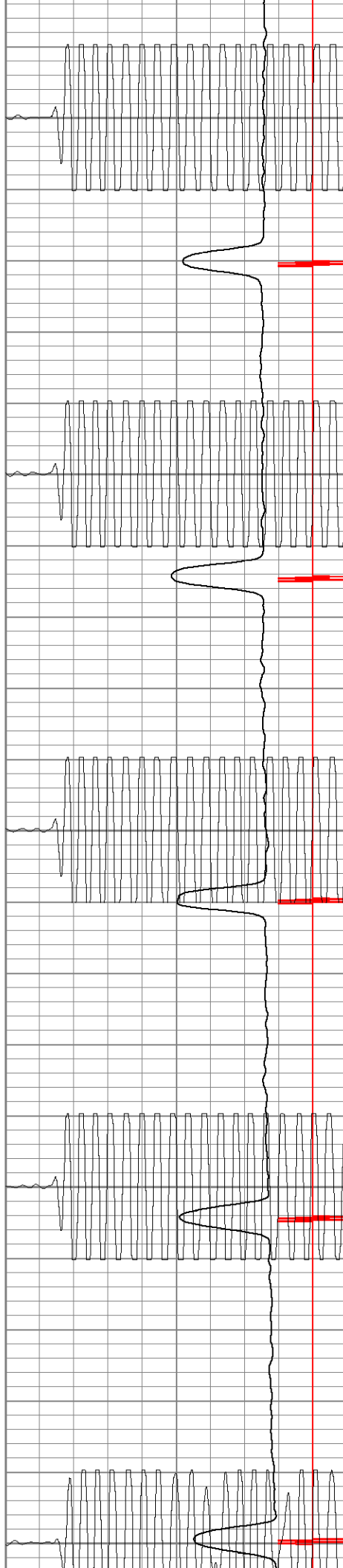
200

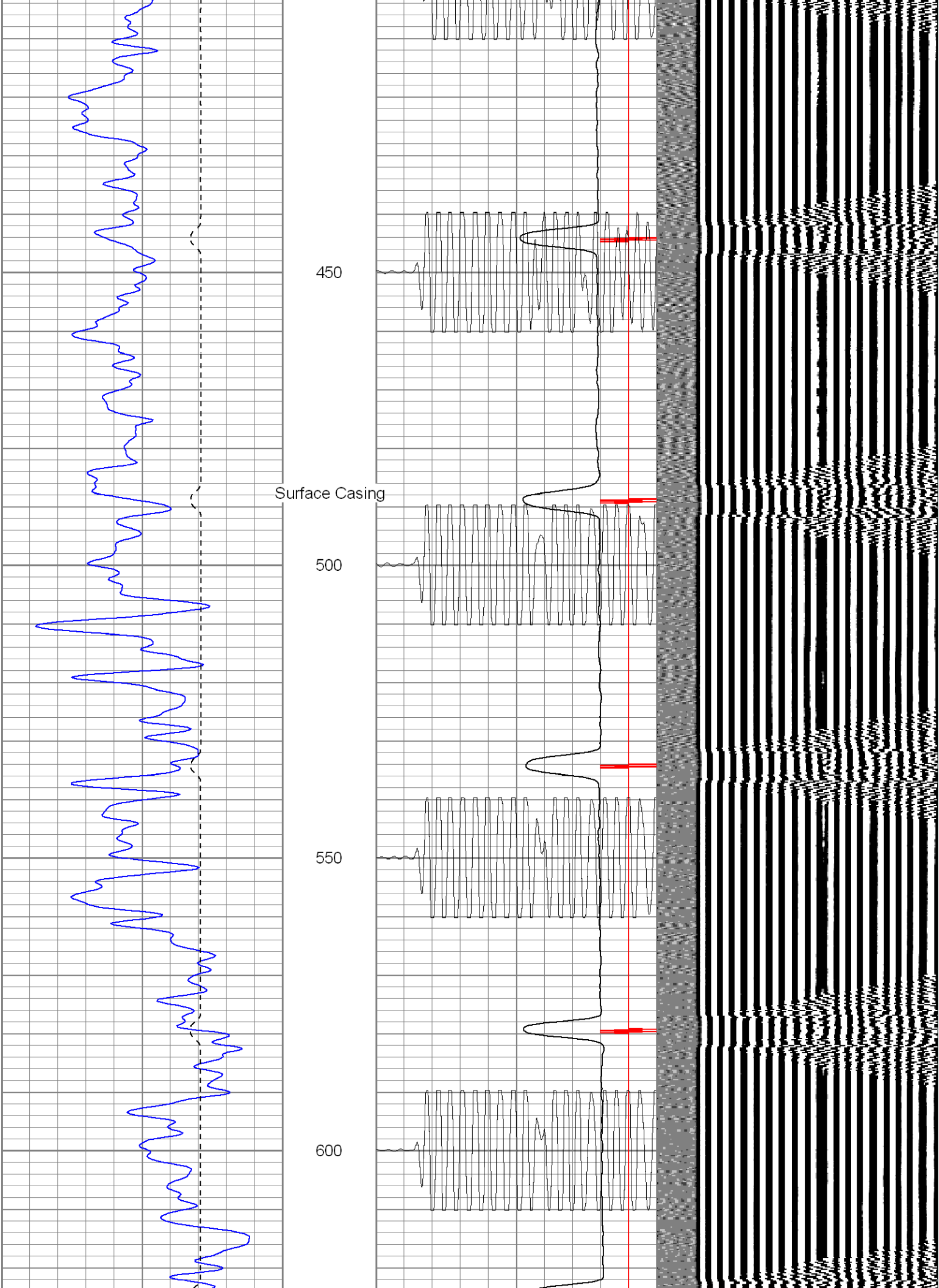
250

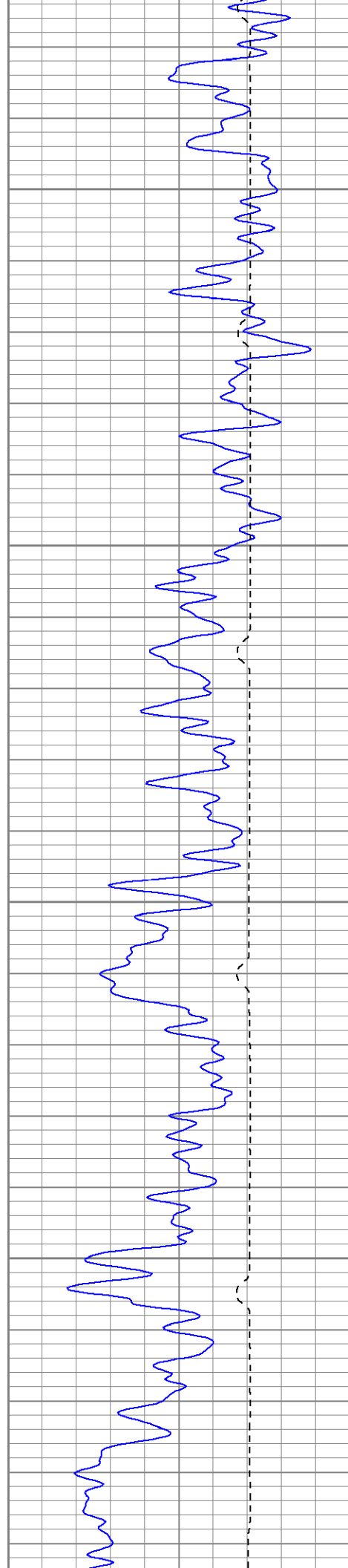
300

350

400





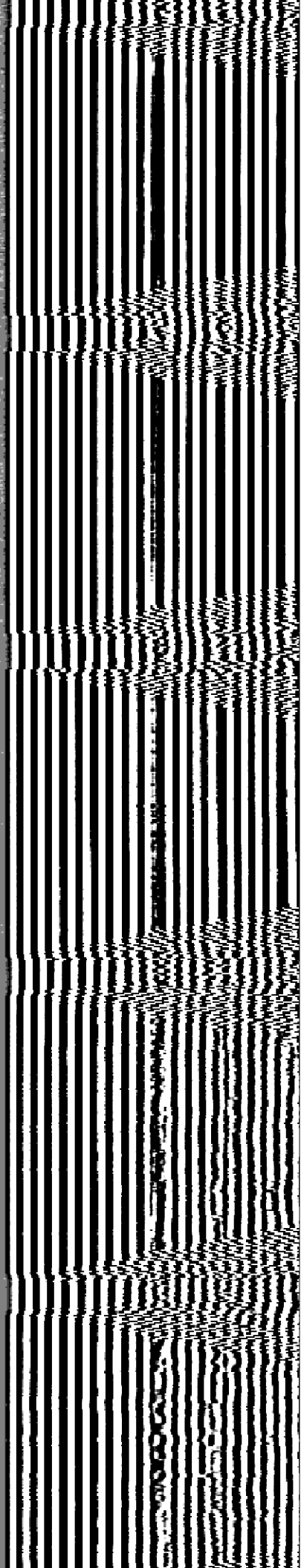


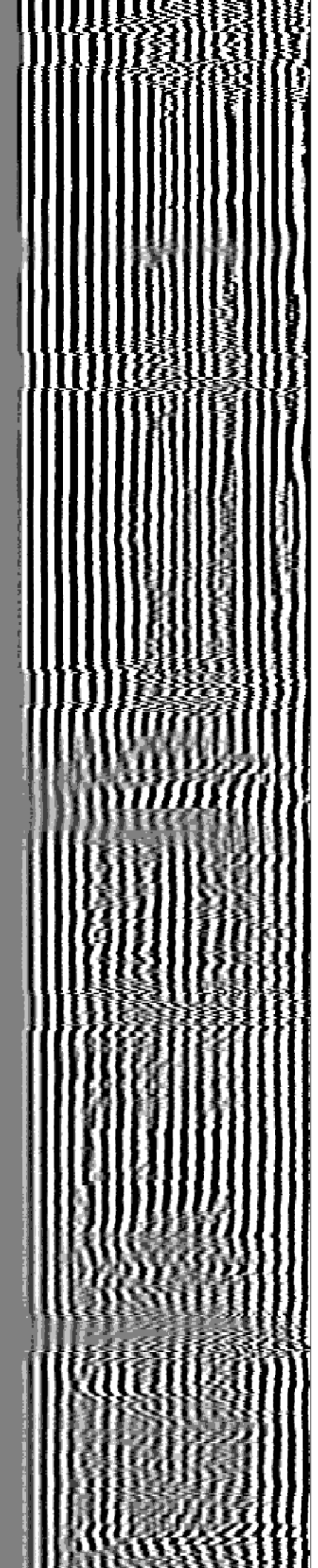
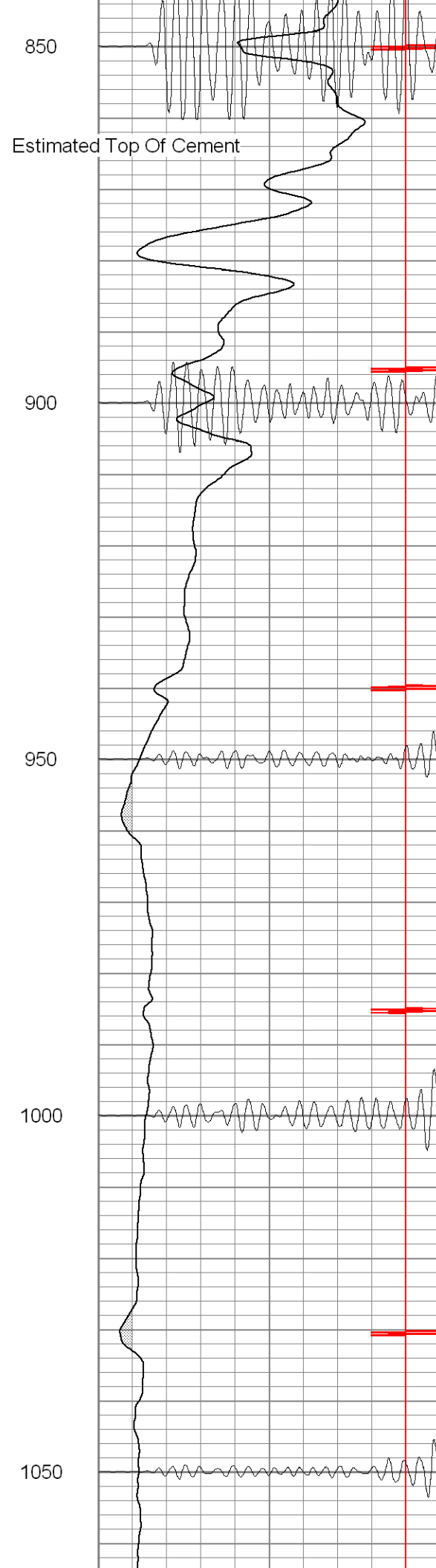
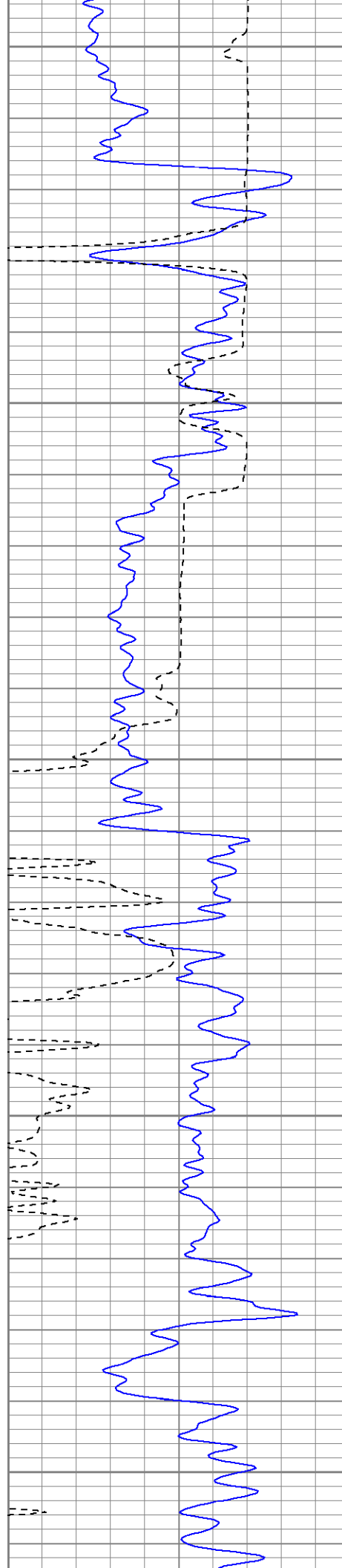
650

700

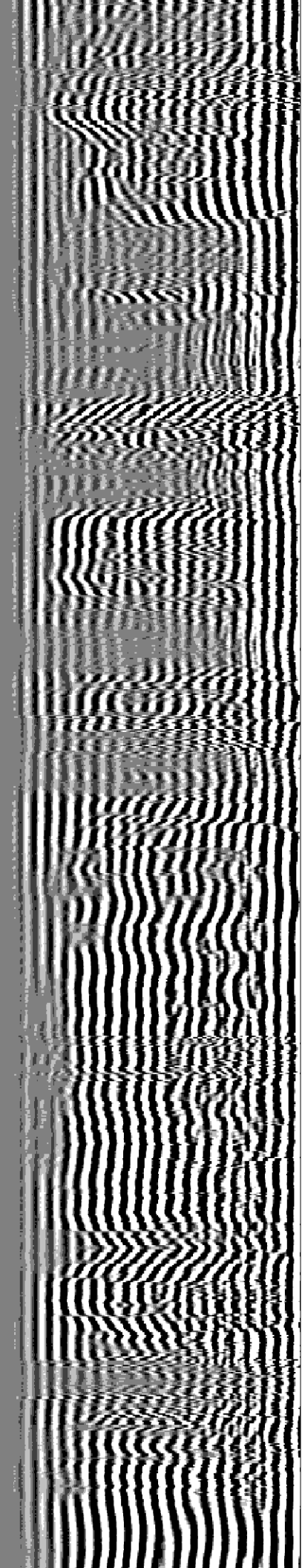
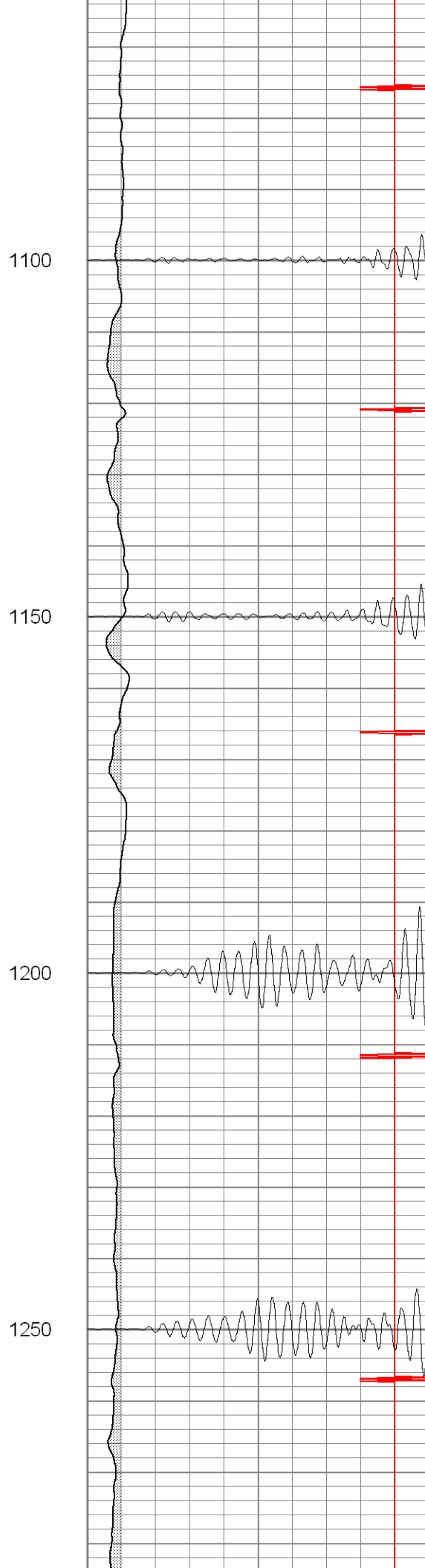
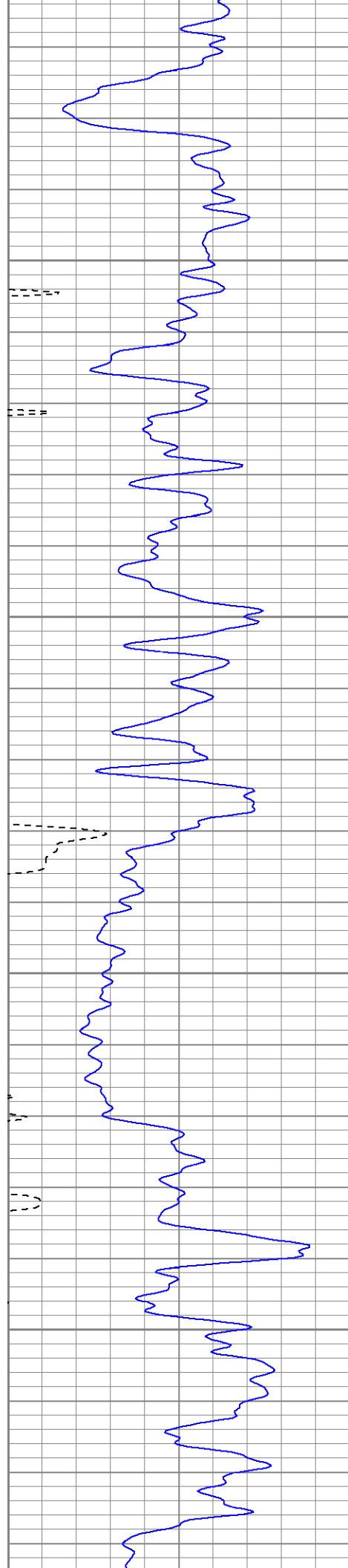
750

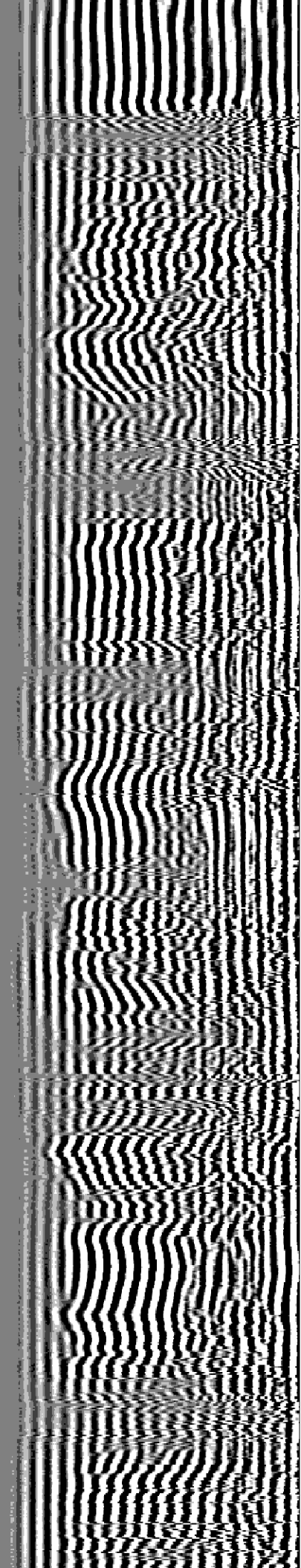
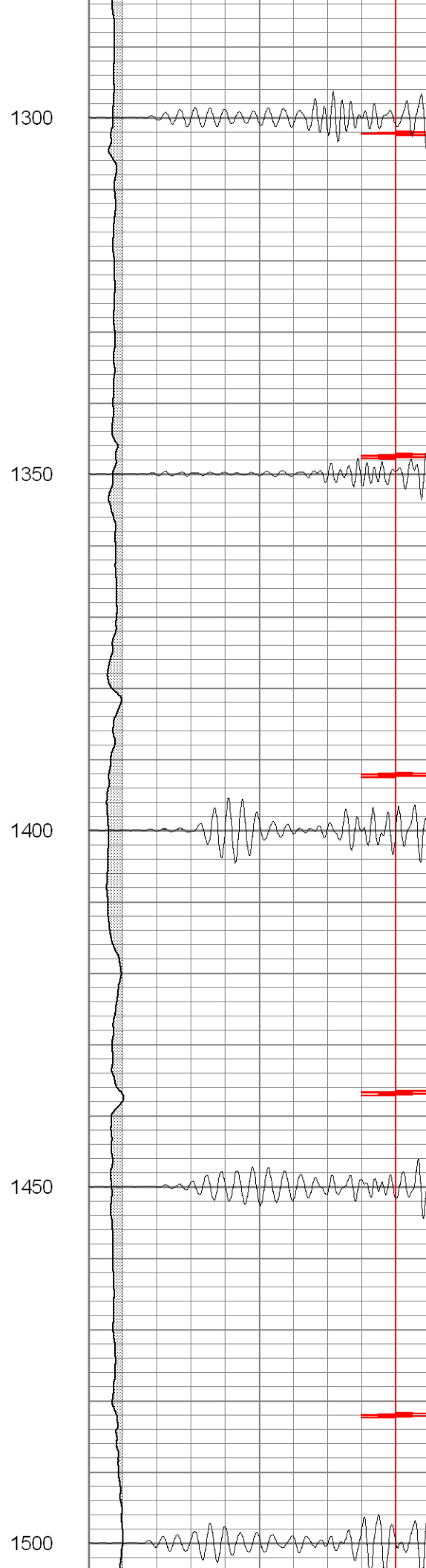
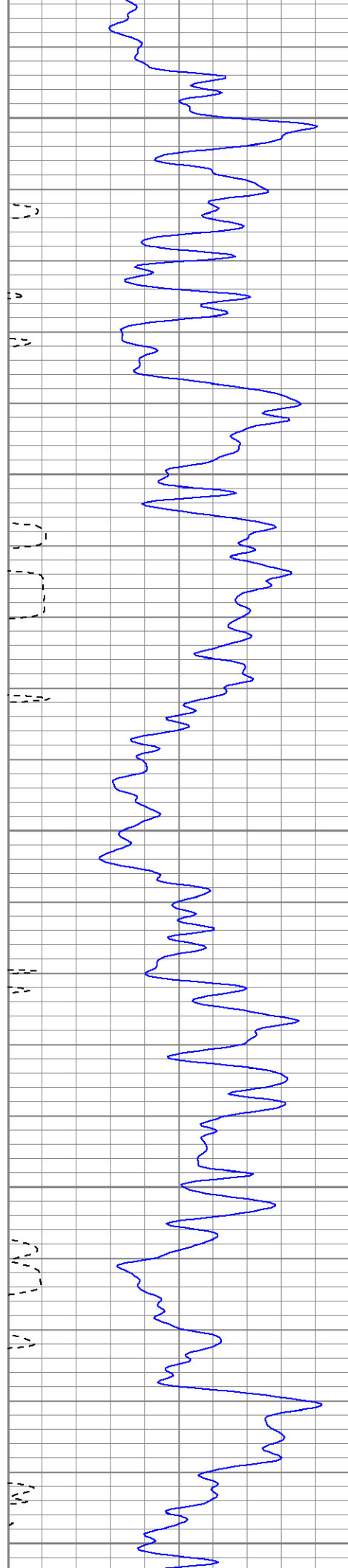
800



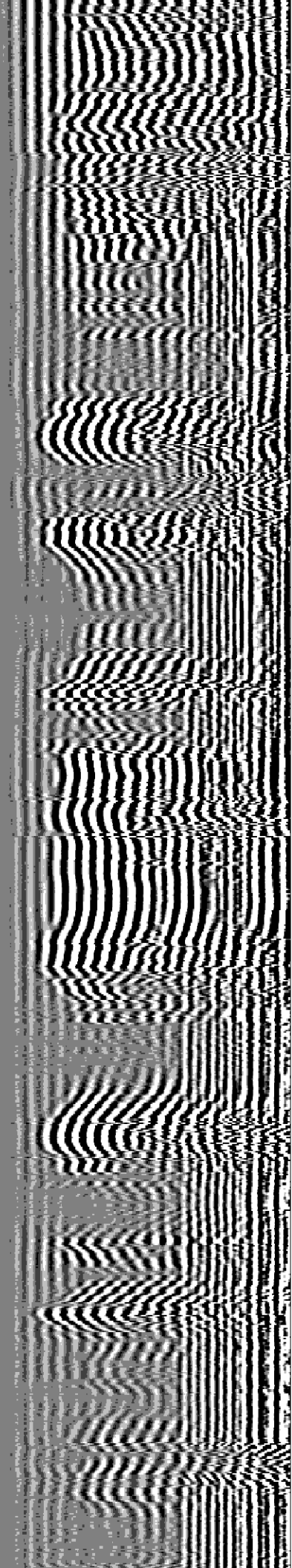
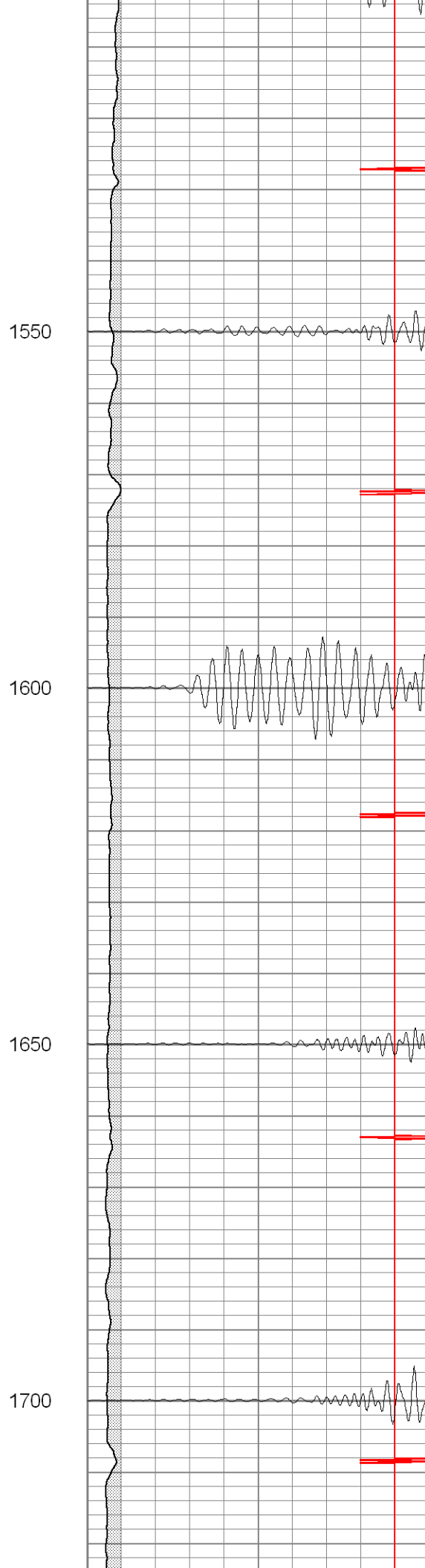
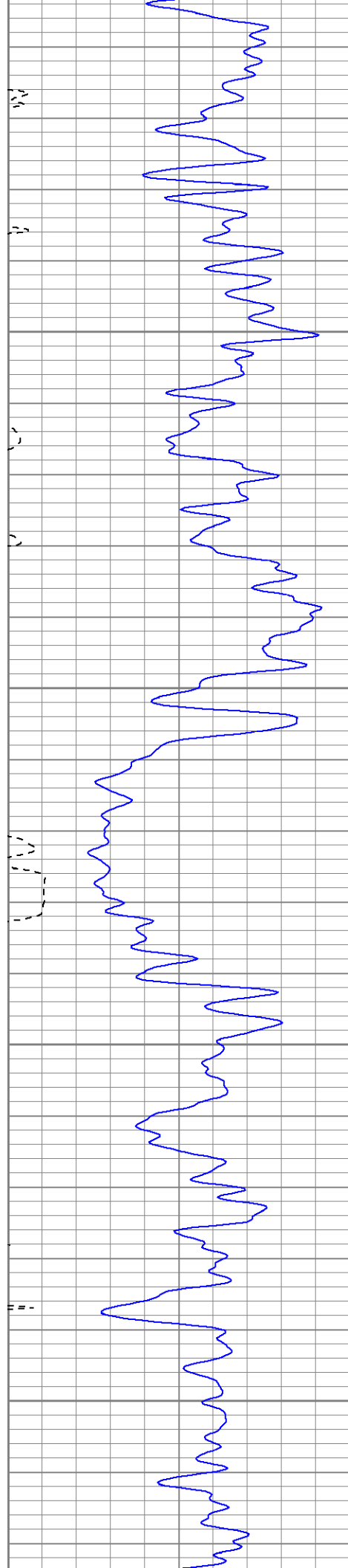


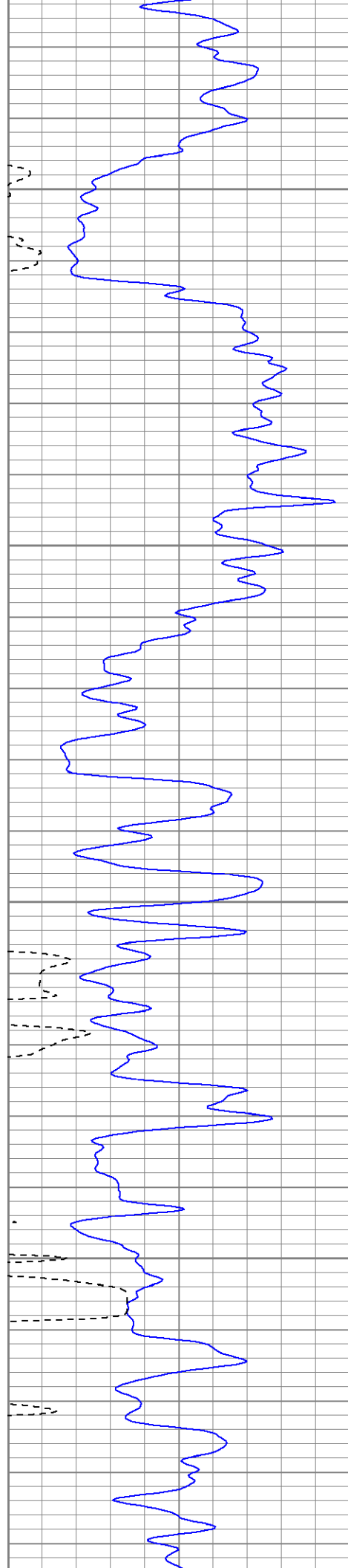










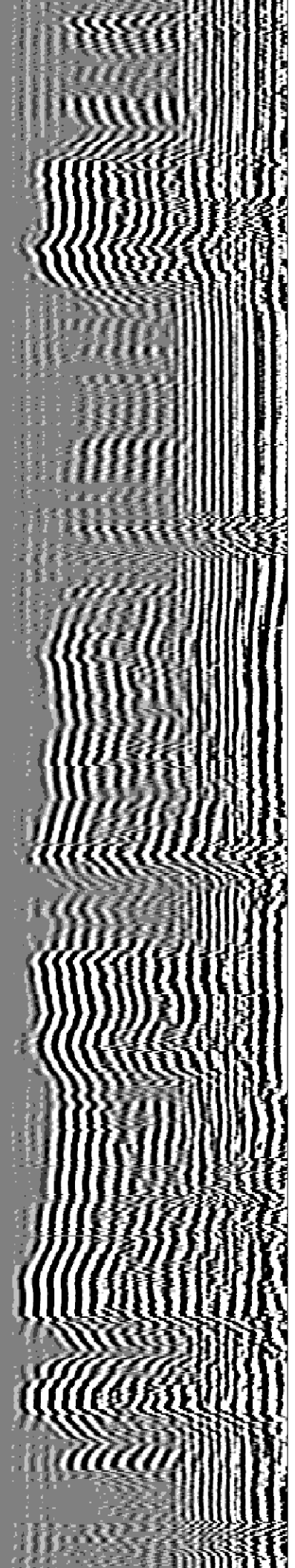


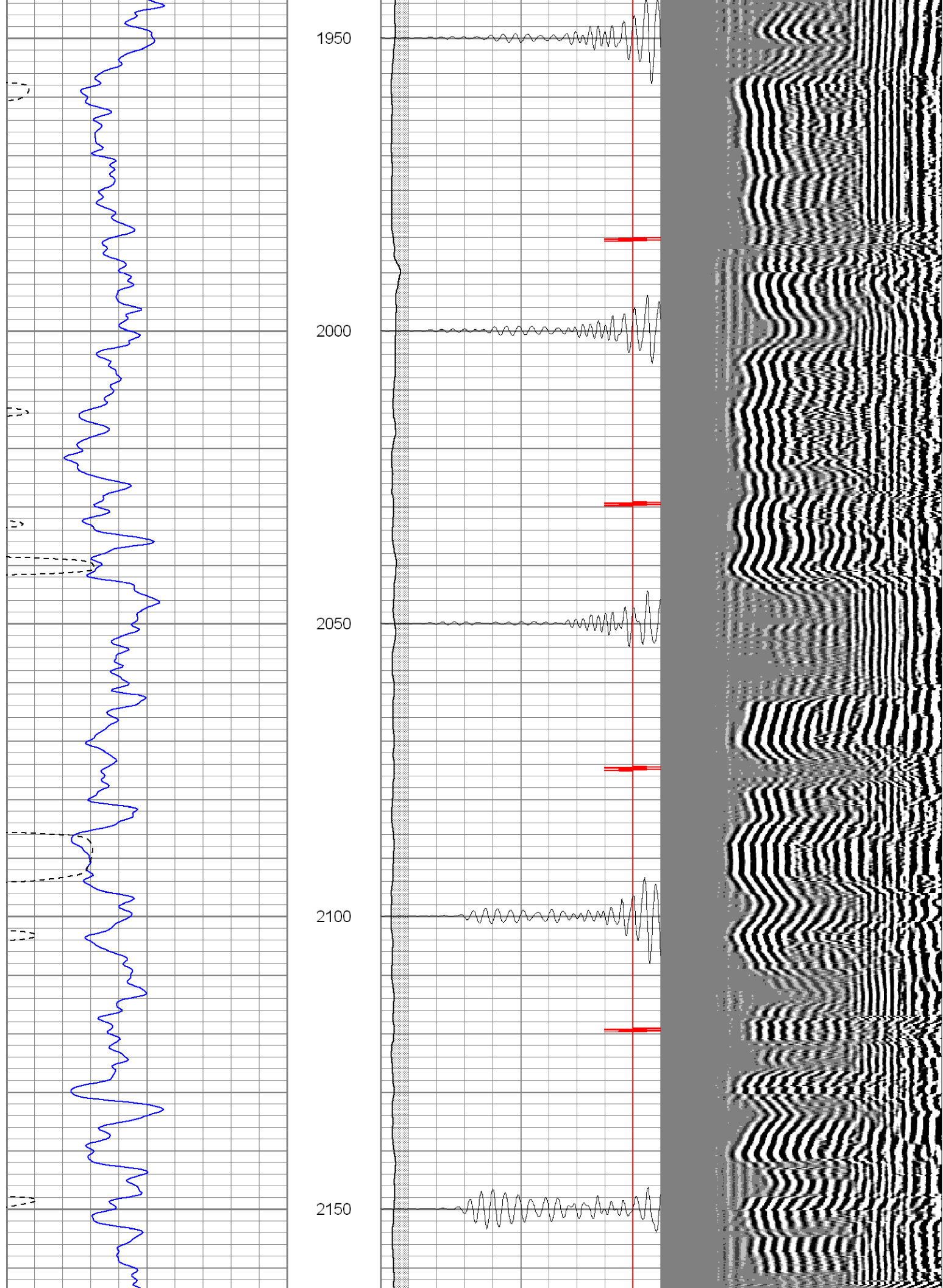
1750

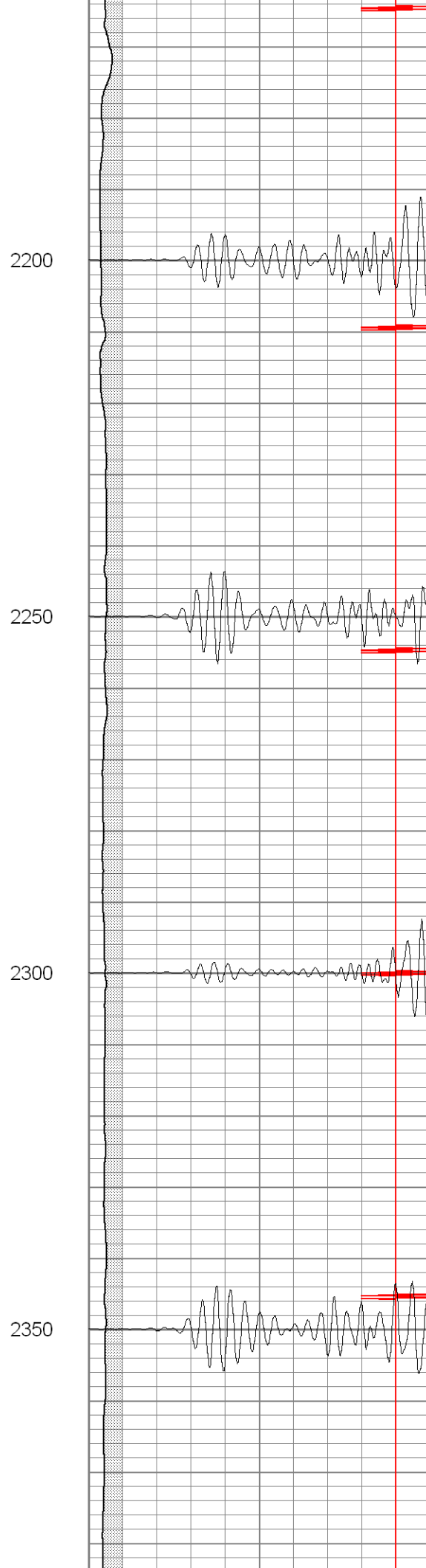
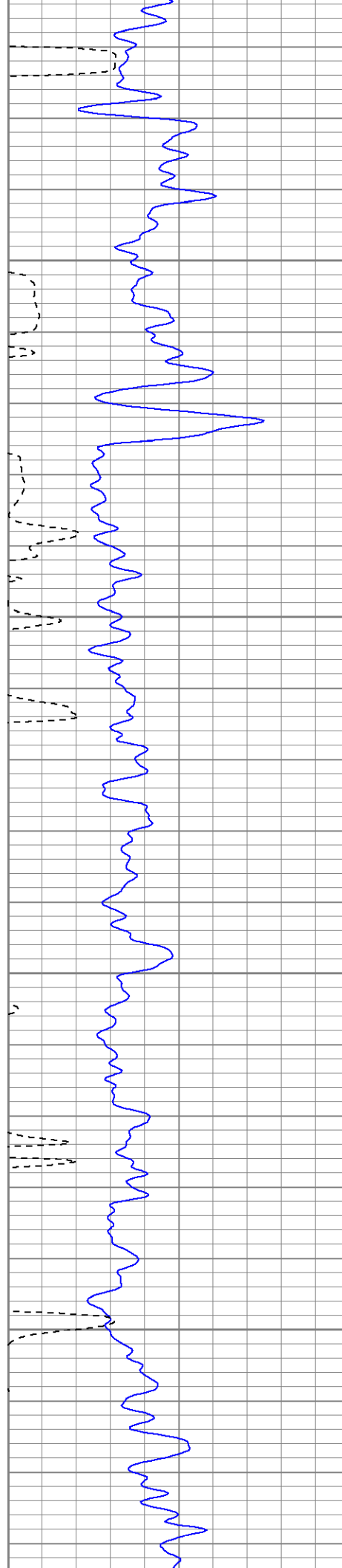
1800

1850

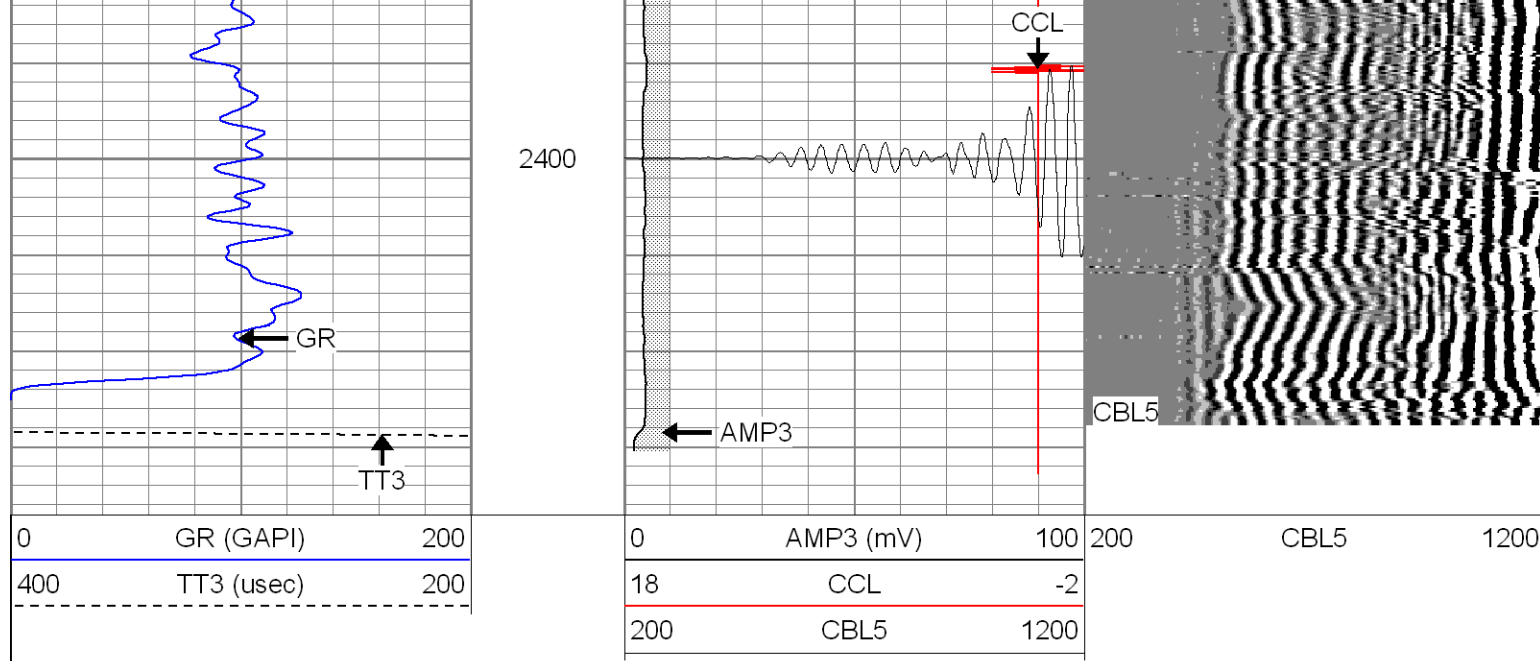
1900









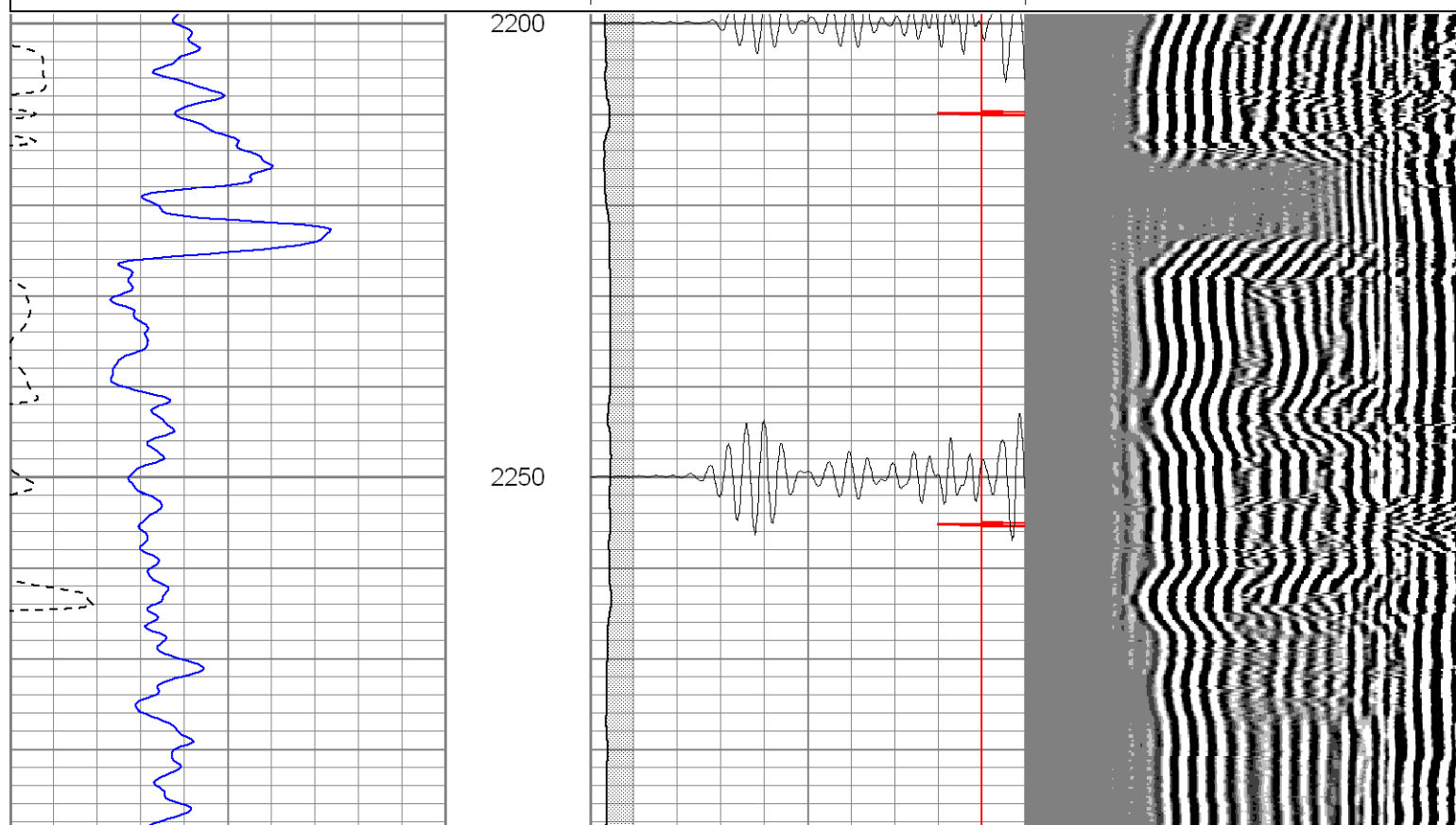
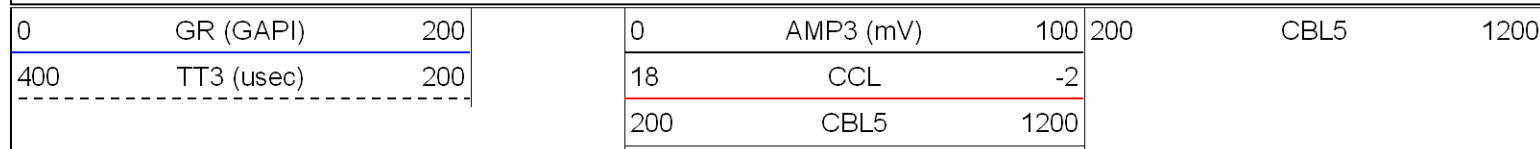


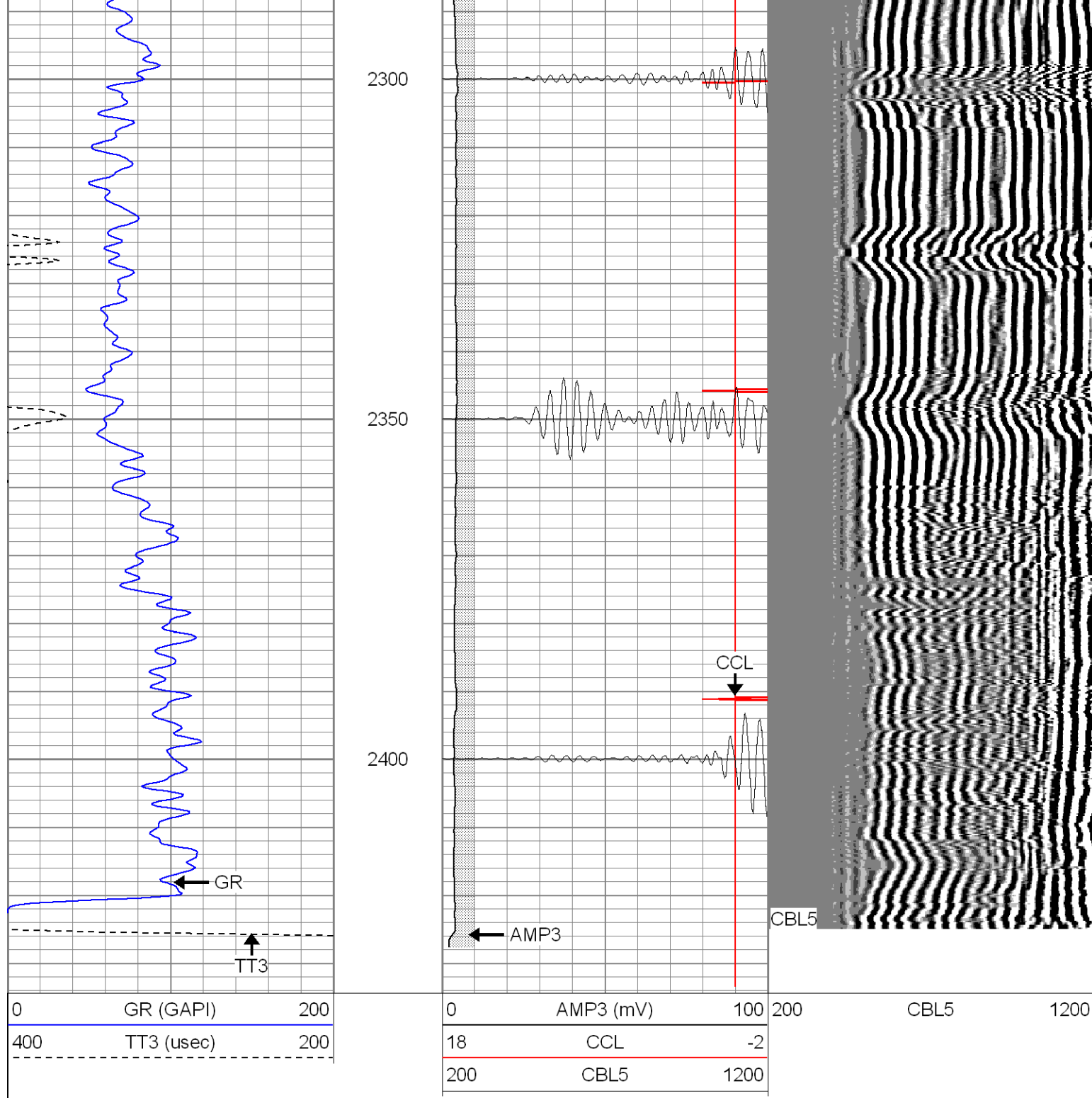
**SUPERIOR**

Black Lick, Pa.  
Mercer, Pa.  
Wooster, Oh.  
Cleveland, Ok.  
Trinidad, Co.

# Repeat Section 0 PSI

Database File: hre23-07b41808.db  
Dataset Pathname: pass1  
Presentation Format: cblrt  
Dataset Creation: Fri Apr 18 08:17:38 2008 by Log Open-Cased 071220  
Charted by: Depth in Feet scaled 1:240





### Calibration Report

Database File: hre23-07b41808.db  
Dataset Pathname: pass1  
Dataset Creation: Fri Apr 18 08:17:38 2008 by Log Open-Cased 071220

### Cement Bond Log Calibration Report

Serial Number: Titan5  
Tool Model: T5  
Performed: Fri Apr 18 07:21:12 2008

Depth: 189.22 ft  
Casing Diameter: 5.5 in

3' Spacing

5' Spacing



Signal Zero:	0	0	mV
Calibrated Amplitude:	85	85	mV
Reading at Signal Zero:	-0.04	0.0081543	V
Reading in Free Pipe:	1.55	2.4	V
Gain:	53.4591	35.5374	
Offset:	2.13836	-0.289783	

### Gamma Ray Calibration Report

Serial Number:	Titan5
Tool Model:	T2
Performed:	Fri Apr 18 07:21:24 2008

Calibrator Value:	1.0	GAPI
-------------------	-----	------

Background Reading:	0.0	cps
Calibrator Reading:	1.0	cps

Sensitivity:	1.1000	GAPI/cps
--------------	--------	----------