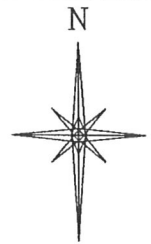
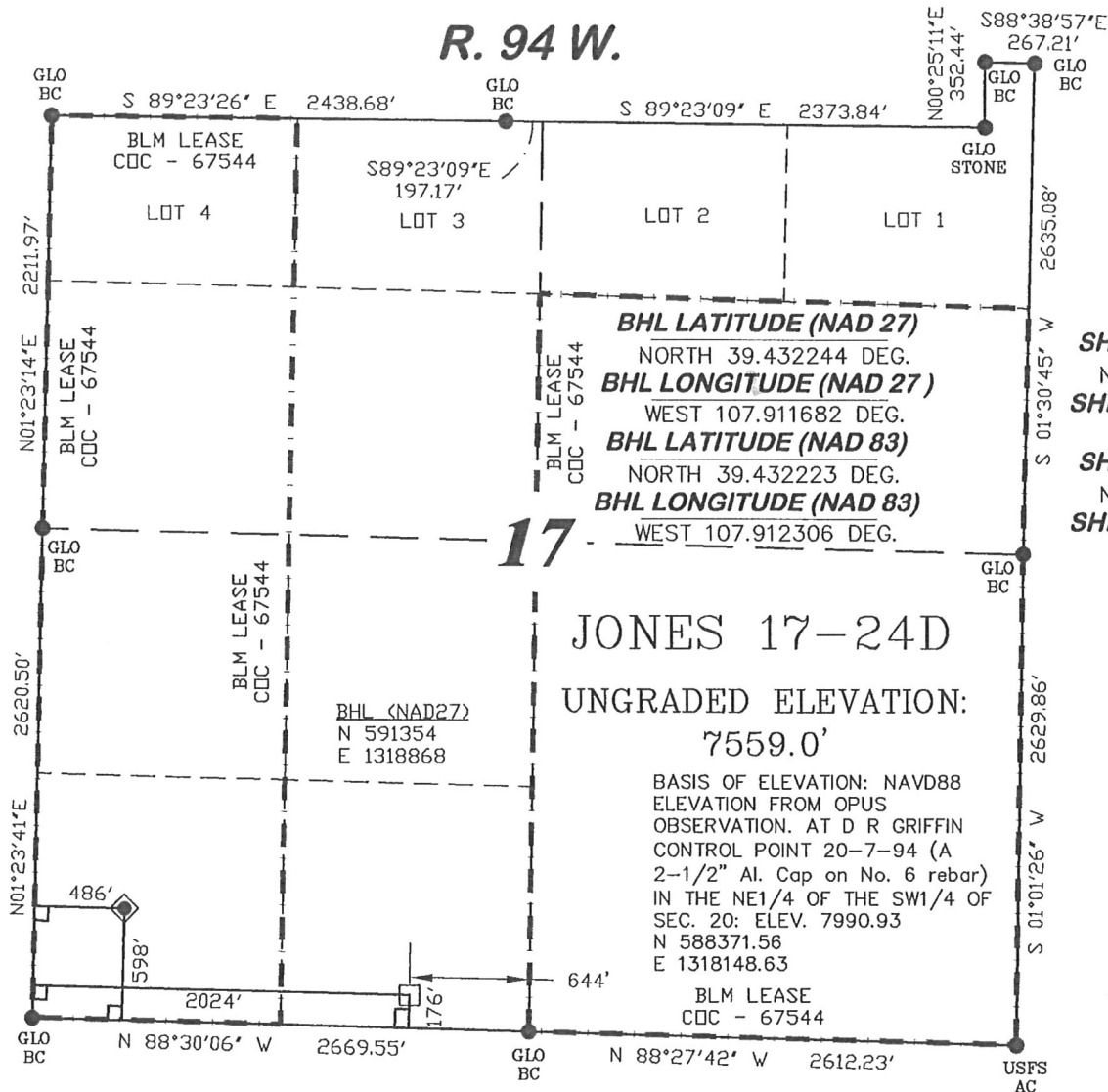


R. 94 W.



SCALE: 1" = 1000'

T. 7 S.

SHL LATITUDE (NAD 27)
NORTH 39.433399 DEG.
SHL LONGITUDE (NAD 27)
WEST 107.917131 DEG.
SHL LATITUDE (NAD 83)
NORTH 39.433378 DEG.
SHL LONGITUDE (NAD 83)
WEST 107.917756 DEG.

SHL NORTHING

591815.76

SHL EASTING

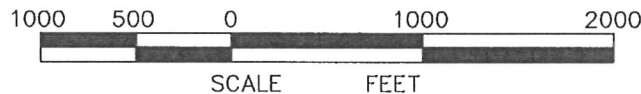
1317340.66

BASIS OF BEARING

SPCS CO CENTRAL NAD 27, BASED ON NGS TRIG. STATION 'FABER'

LEGEND

- ◆ WELL LOCATION
- FOUND MONUMENT
- L DENOTES 90° TIE
- CALCULATED CORNER
- APPROXIMATE BHL



SURVEYOR'S STATEMENT

I, Ronald C. Rennke, an employee and agent on behalf of D.R. GRIFFIN & ASSOCIATES, INC. state the plat hereon is a correct representation of a survey made under my supervision on June 23, 2008 of the shown JONES 17-24D and that the location has been staked on the ground as shown on the plat.

NOTES


GPS OPERATOR RONK RICHARDSON
OBSERVED A PDOP OF 2.5.

ALL GPS OBSERVATIONS ARE IN COMPLIANCE WITH COGCC RULE NO. 215.

HIGH PLATEAU DESERT
NO IMPROVEMENTS WITHIN
200' RADIUS OF WELL SITE.
SURFACE USE IS NATIVE WOODS

2/6/09
Ronald C. Rennke
COLORADO PLS No. 37065

EXHIBIT 1

 <div>RIFFIN & ASSOCIATES, INC. (307) 362-5028 1414 ELK ST., ROCK SPRINGS, WY 82901</div>		<div>PLAT OF DRILLING LOCATION FOR NOBLE ENERGY, INC.</div>	
DATE DRAWN: 5/23/07 KC	SCALE: 1" = 1000'	<div>598' F/SL & 486' F/WL, SECTION 17, T. 7 S., R. 94 W., 6th P.M. GARFIELD COUNTY, COLORADO</div>	
REVISED: 11/20/08 WG	JOB No. 15454		
ADDED LEASE LINE	EXHIBIT 1		