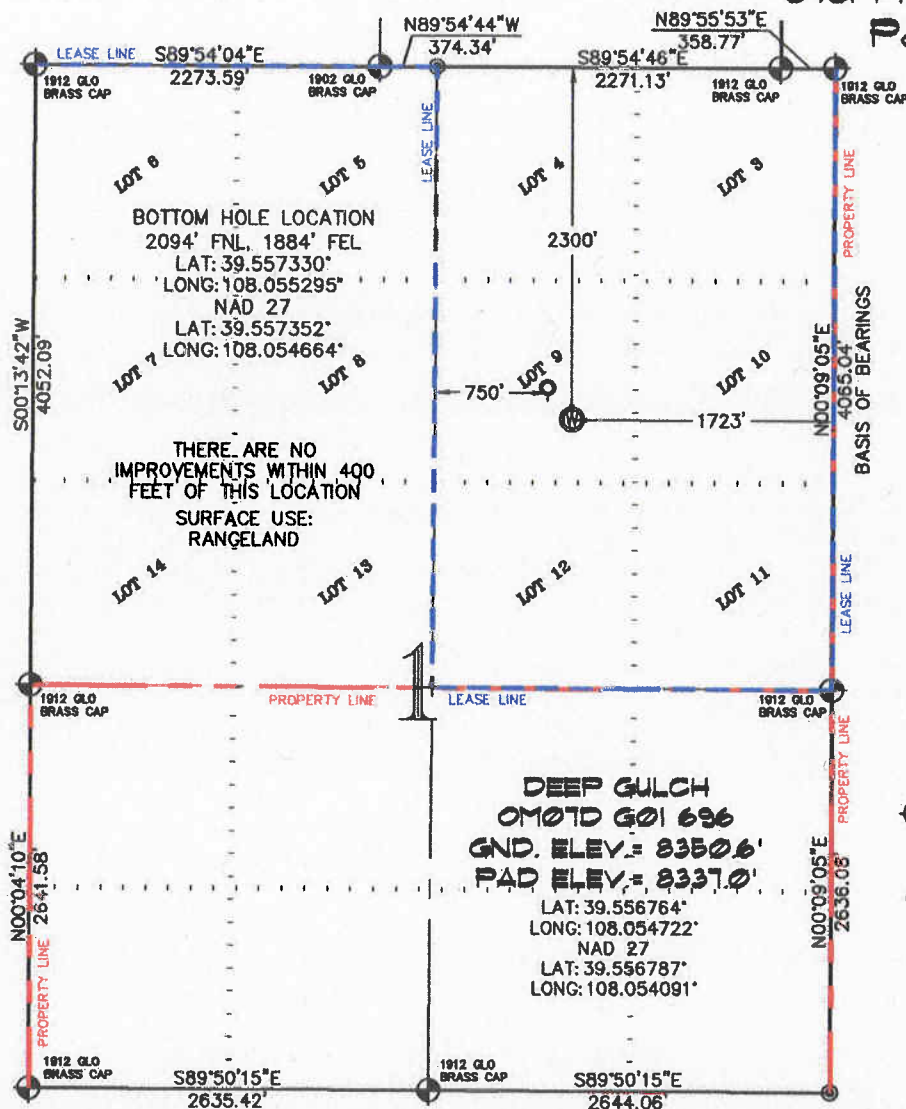


SEC. 1, T. 6 S., R. 96 W. OF THE 6TH P.M. Old Mountain G01-696
Pad Location



-LEGEND-

- ① SECTION CORNER LOCATION
BASED ON GLO RECORD
INFORMATION
- ② FIELD SURVEYED SECTION
CORNER LOCATIONS
- ③ FIELD SURVEYED WELL
LOCATION
- ④ CALCULATED BOTTOM
HOLE LOCATION

THIS WELL LOCATION PLAT WAS PREPARED FOR BERRY PETROLEUM COMPANY TO LOCATE THE DEEP GULCH OM07D G01 696 WELL, 2300 FEET FROM THE NORTH LINE AND 1723 FEET FROM THE EAST LINE IN THE LOT 9 OF SECTION 1, T. 6 S., R. 96 W. OF THE 6TH P.M. GARFIELD COUNTY, COLORADO.

REFERENCE NOTES

- 1) T. 6 S., R. 96 W., 6TH P.M. GLO PLAT.
- 2) U.S.G.S. QUAD: FORKED GULCH, CO
- 3) ELEVATIONS BASED ON N.A.V.D. 1988
- 4) LATITUDES AND LONGITUDES ARE BASED ON NAD 83, COLORADO CENTRAL ZONE.
- 5) GPS OPERATOR IVAN MARTIN, OBSERVED A PDOP OF 2.6.
- 6) ALL GPS OBSERVATIONS ARE IN COMPLIANCE WITH COGCC RULE NO. 215.
- 7) SURFACE AND BOTTOM HOLE LOCATIONS ARE MEASURED 90° FROM SECTION LINES.

SURVEYOR'S CERTIFICATE

I, George R. Bauer: a Professional Land Surveyor in the State of Colorado do hereby certify that this Survey was made under my direct supervision, and that this plat represents said Survey.



COLORADO P.L.S.

VIEW: 18



CONSTRUCTION SURVEYS, INC.
0012 SUNRISE BLVD.
SILT, CO 81652
(970)876-5753

SURVEYED: 06/30/10	SCALE: 1" = 1200'
DRAFTED: 08/05/10	DWG: Berry\OldMountainG01-696.dwg
CHECKED: 08/10/10	SHEET: 1 of 11