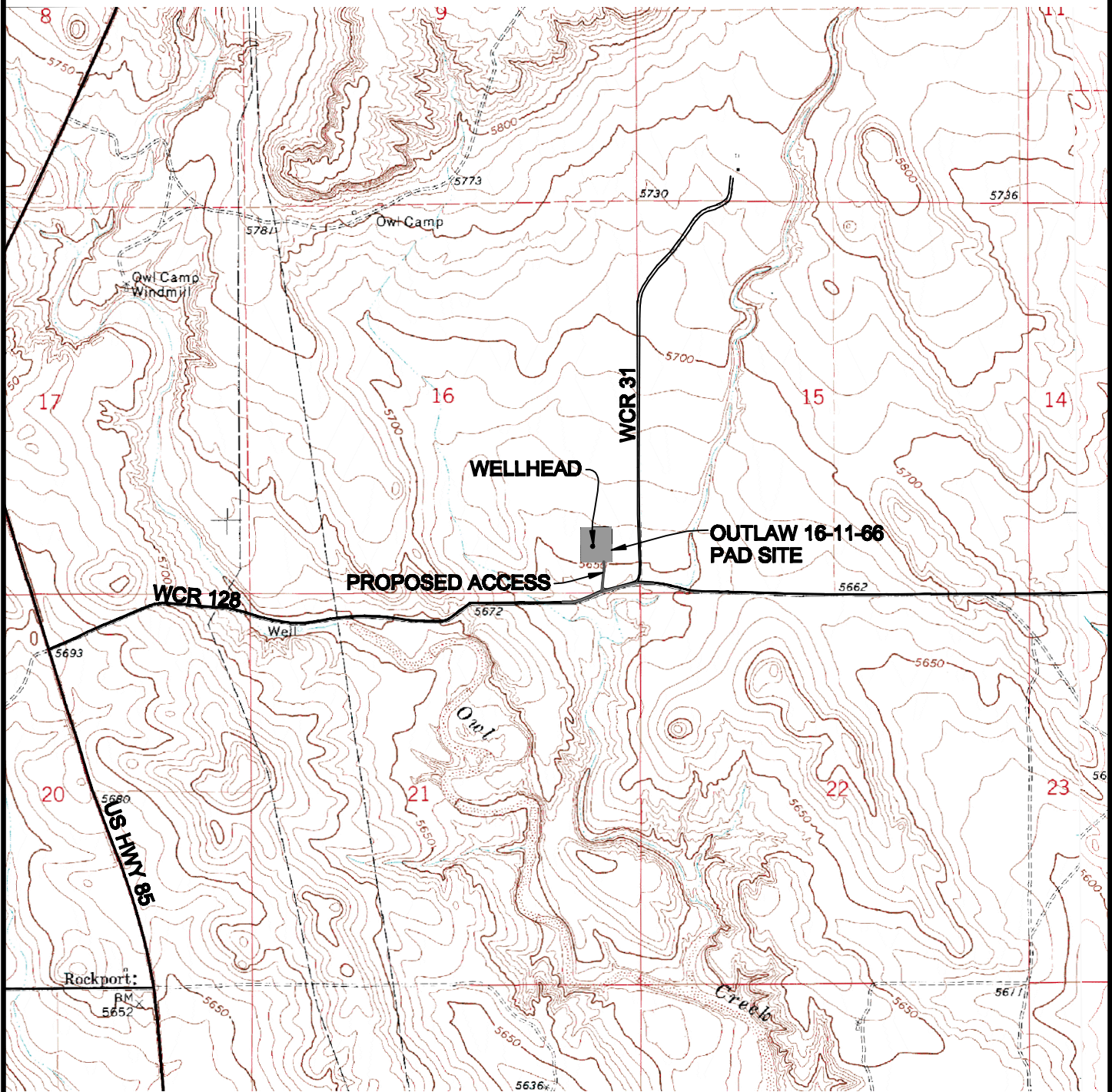


# ACCESS ROAD MAP



Graphic Scale In Feet  
1 Inch = 2000 Feet

## DRIVING DIRECTIONS:

From Rockport, CO, North on Highway 85 approximately 1 mile  
Right on WCR 128; East along WCR 128 approximately 1.6 miles  
Left on Access 392 feet North onto Outlaw 16-11-66 Pad

4/22/2010



**WESTERN LAND SERVICES**  
Sheridan, WY 82801 (307)673-1817

**SLAWSON EXPLORATION COMPANY, INC**  
**OUTLAW 16-11-66**

**SE1/4 SE1/4 SECTION 16, T11N R66W**  
**6TH PM, WELD COUNTY, COLORADO**