

T5S, R95W, 6th P.M.

BERRY PETROLEUM COMPANY

Well location, MILK CABIN OM09D P32 595, located as shown in the SE 1/4 SE 1/4 of Section 32, T5S, R95W, 6th P.M., Garfield County, Colorado.

BASIS OF ELEVATION

SPOT ELEVATION AT THE NORTHWEST CORNER OF SECTION 30, T5S, R95W, 6th P.M. TAKEN FROM THE FORKED GULCH QUADRANGLE, COLORADO, GARFIELD COUNTY, 7.5 MINUTE SERIES (TOPOGRAPHICAL MAP) PUBLISHED BY THE UNITED STATES DEPARTMENT OF THE INTERIOR, GEOLOGICAL SURVEY. SAID ELEVATION IS MARKED AS BEING 5966 FEET.

BASIS OF BEARINGS

BASIS OF BEARINGS IS A G.P.S. OBSERVATION.

Sheet 1e of 12



SCALE

CERTIFICATE

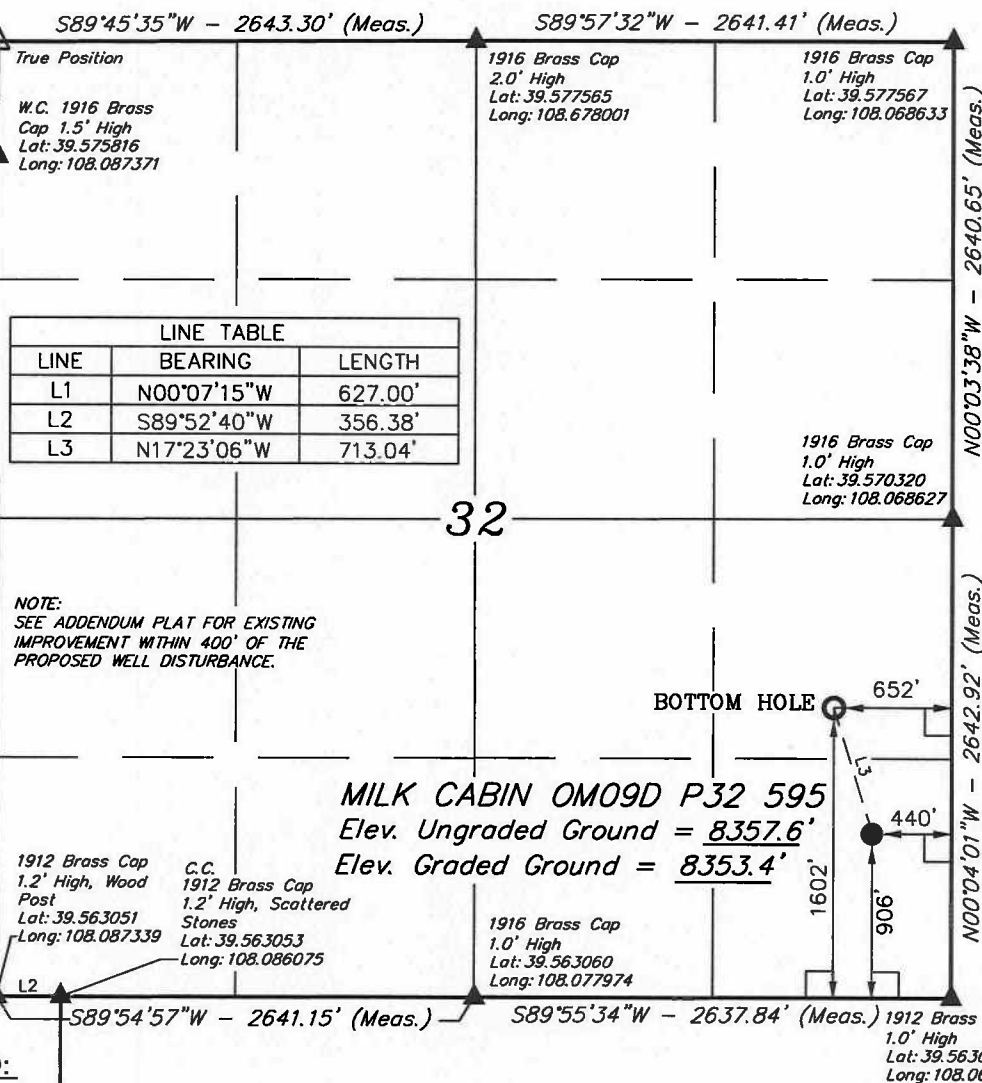
THIS IS TO CERTIFY THAT THE ABOVE PLAT WAS PREPARED FROM FIELD NOTES OF ACTUAL SURVEYS MADE BY ME OR UNDER MY SUPERVISION AND THAT THE SAME ARE TRUE AND CORRECT TO THE BEST OF MY KNOWLEDGE AND BELIEF.

Revised: 04-29-10 D.R.B.
Revised: 03-23-09 D.R.B.
Revised: 02-20-09 D.R.B.
Revised: 02-13-09 D.R.B.
Revised: 02-10-09 D.R.B.

REGISTERED LAND SURVEYOR
REGISTRATION NO. 17482
STATE OF COLORADO

UINTAH ENGINEERING & LAND SURVEYING
85 SOUTH 200 EAST - VERNAL, UTAH 84078
(435) 789-1017

SCALE 1" = 1000'	DATE SURVEYED: 08-31-06	DATE DRAWN: 09-12-06
PARTY G.O. B.S. D.R.B.	REFERENCES G.L.O. PLAT	
WEATHER WARM	FILE BERRY PETROLEUM COMPANY	



LINE TABLE		
LINE	BEARING	LENGTH
L1	N00°07'15"W	627.00'
L2	S89°52'40"W	356.38'
L3	N17°23'06"W	713.04'

NOTE:
SEE ADDENDUM PLAT FOR EXISTING IMPROVEMENT WITHIN 400' OF THE PROPOSED WELL DISTURBANCE.

LEGEND:

- = 90° SYMBOL
- = PROPOSED WELL HEAD.
- ▲ = SECTION CORNERS LOCATED.
- △ = SECTION CORNERS RE-ESTAB. BY SINGLE PROPORTION METHOD.

NAD 83 (TARGET BOTTOM HOLE)	NAD 83 (SURFACE LOCATION)
LATITUDE = 39°34'02.86" (39.567461)	LATITUDE = 39°33'55.99" (39.565553)
LONGITUDE = 108°04'15.38" (108.070939)	LONGITUDE = 108°04'12.66" (108.070183)
NAD 27 (TARGET BOTTOM HOLE)	NAD 27 (SURFACE LOCATION)
LATITUDE = 39°34'02.94" (39.567483)	LATITUDE = 39°33'56.07" (39.565575)
LONGITUDE = 108°04'13.10" (108.070306)	LONGITUDE = 108°04'10.38" (108.069550)

PDOP = 2.6