

T6S, R95W, 6th P.M.

WC
1921 Brass Cap
1.0' High, Pile
of Stones
Lat: 39.517658
Long: 108.013317

1921 Brass Cap
1.9' High
Lat: 39.517644
Long: 107.994442

BASIS OF ELEVATION

WILLIAMS PRODUCTION RMT COMPANY
Well location, FEDERAL PA 322-21, located as shown in the SE 1/4 NW 1/4 of Section 21, T6S, R95W, 6th P.M., Garfield County, Colorado.

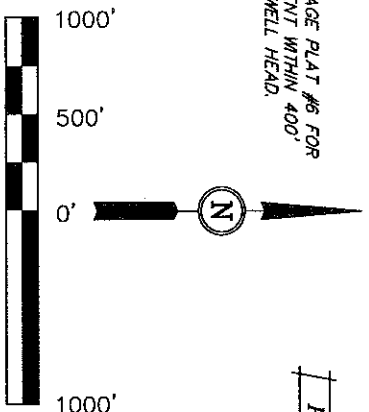
SPOT ELEVATION AT THE NORTHWEST CORNER OF SECTION 30, T5S, R95W, 6th P.M. TAKEN FROM THE FORKED GULCH QUADRANGLE, COLORADO, GARFIELD COUNTY, 7.5 MINUTE SERIES (TOPOGRAPHICAL MAP) PUBLISHED BY THE UNITED STATES DEPARTMENT OF THE INTERIOR, GEOLOGICAL SURVEY. SAID ELEVATION IS MARKED AS BEING 5966 FEET.

BASIS OF BEARINGS

BASIS OF BEARINGS IS A G.P.S. OBSERVATION.

NOTE:
SEE CURRENT FOOTAGE PLAT #6 FOR
EXISTING IMPROVEMENT WITHIN 400'
OF THE PROPOSED WELL HEAD.

PLAT #1



CERTIFICATE

THIS IS TO CERTIFY THAT THE ABOVE PLAT WAS PREPARED FROM FIELD NOTES OF ACTUAL SURVEYS MADE BY ME OR UNDER MY SUPERVISION AND THAT THE SAME ARE TRUE AND CORRECT TO THE BEST OF MY KNOWLEDGE AND BELIEF.

REGISTERED AND EXPIRING
REGISTRATION NO. 10792
STATE OF COLORADO

UNTAR ENGINEERING & LAND SURVEYING
85 SOUTH 200 EAST - VERNAL, UTAH 84078
(435) 789-1017

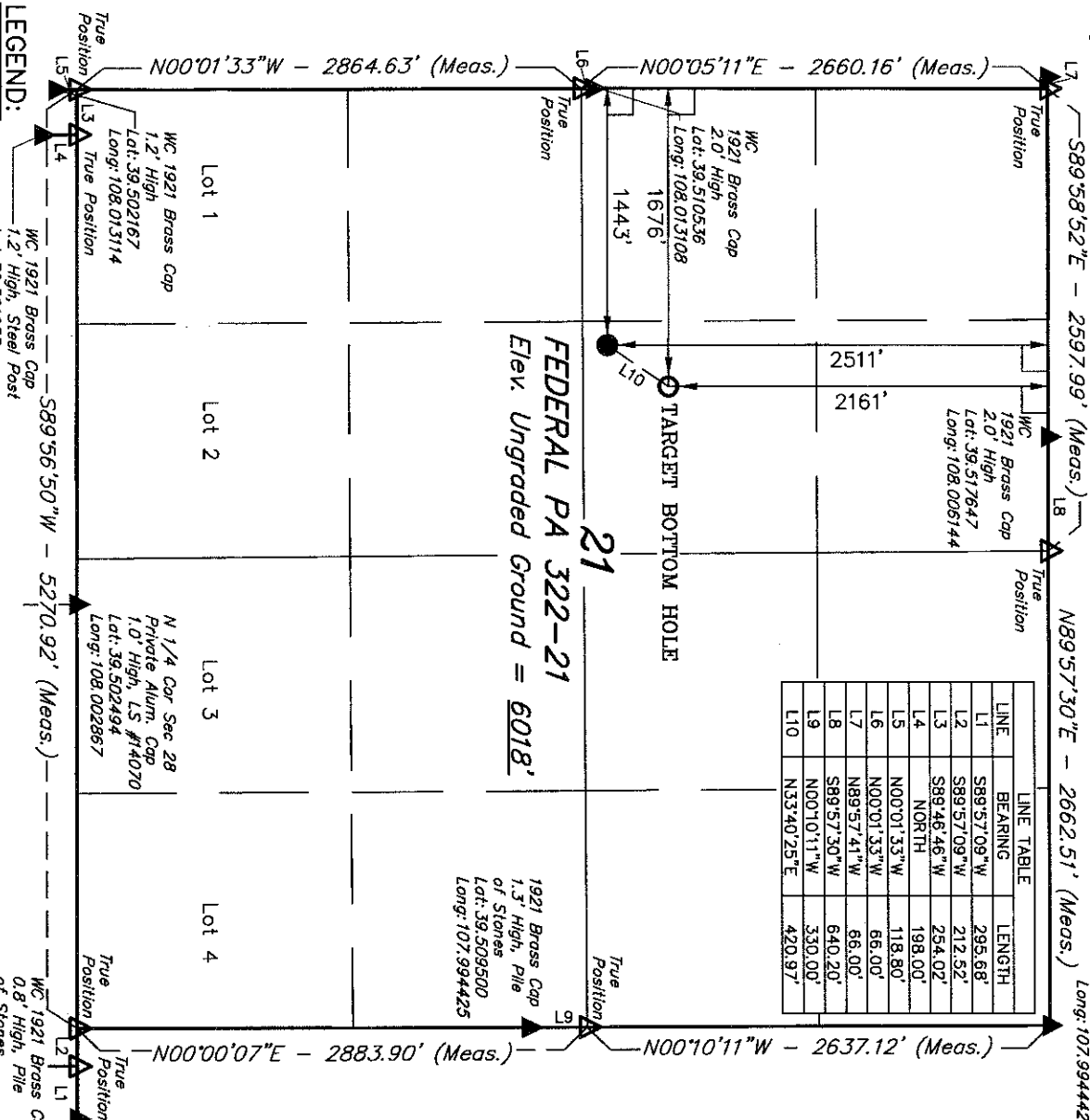
SCALE 1" = 1000'
DATE SURVEYED: 02-23-09
DATE DRAWN: 03-30-10

PARTY B.H. G.O. D.R.B. REFERENCES G.L.O. PLAT
WEATHER WARM FILE WILLIAMS PRODUCTION RMT COMPANY

LINE	BEARING	LENGTH
L1	S89°57'09"W	295.68'
L2	S89°57'09"W	212.52'
L3	S89°46'46"W	254.02'
L4	NORTH	198.00'
L5	N00°01'33"W	118.80'
L6	N00°01'33"W	66.00'
L7	N89°57'41"W	66.00'
L8	S89°57'30"W	640.20'
L9	N00°10'11"W	330.00'
L10	N33°40'25"E	420.97'

FEDERAL PA 322-21
Elev. Ungraded Ground = 6018'

TARGET BOTTOM HOLE



LEGEND:

- 90° SYMBOL
- PROPOSED WELL HEAD.
- SECTION CORNERS LOCATED.
- SECTION CORNERS RE-ESTAB. BY SINGLE PROPORTION METHOD.

NAD 83 (TARGET BOTTOM HOLE)
LATITUDE = 39°50'42.19" (39.511719)
LONGITUDE = 108°00'25.79" (108.007164)
STATE PLANE-COLO. CENTRAL-NAD 83
N = 1621032.900
E = 2292725.300

NAD 83 (SURFACE LOCATION)
LATITUDE = 39°50'56.73" (39.510758)
LONGITUDE = 108°00'28.77" (108.007992)
STATE PLANE-COLO. CENTRAL-NAD 83
N = 1620689.520
E = 2292482.004

PDOP = 1.4
Lat: 39.502489
Long: 107.992639