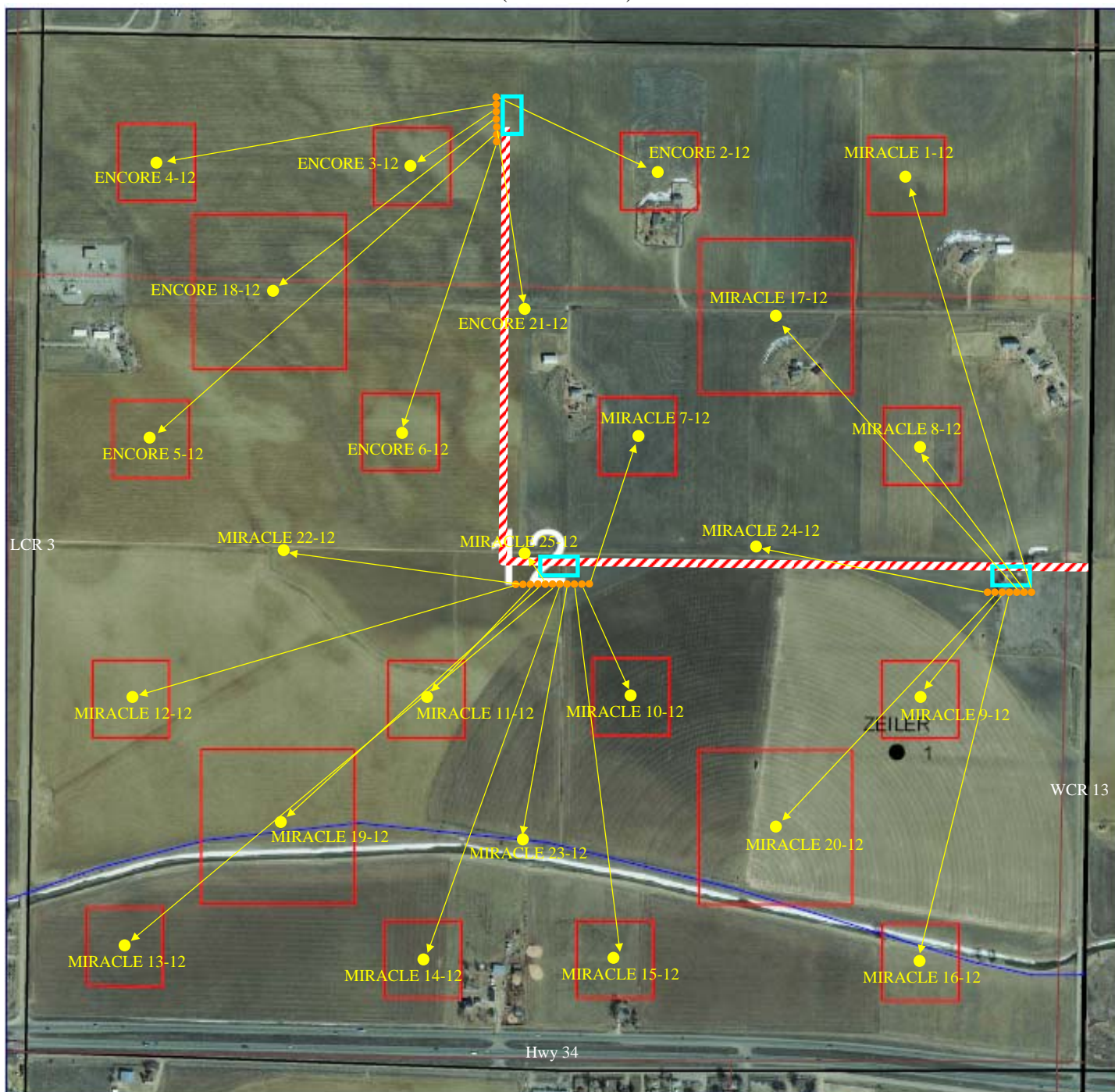


# ACCESS ROAD (2007 Aerial)



This aerial photo and all locations and depictions thereon are provided as a courtesy and are intended to be used for general reference purposes only. KMG-McCue/Anadarko does not warrant the accuracy or the completeness of the information appearing on this aerial photo and any reliance on it for any purpose whatsoever is at the sole risk of the party so relying.



- Access Road
- KMG Gathering Pipeline
- Duke Pipeline
- RGS1
- Proposed Flowline
- Legal Drilling Window
- Battery Location
- Proposed Wellhead
- Bottom Hole Location



**AERIAL PHOTO**  
Sec. 12-T5N-R6&W  
Larimer County, Colorado

Author: Teddy Ruzsanyi	Created: 08/12/2007	Printed: 12 March, 2008
Project: KM-DJ Basin Land	Scale: 1"=800'	File: S66012.dwg