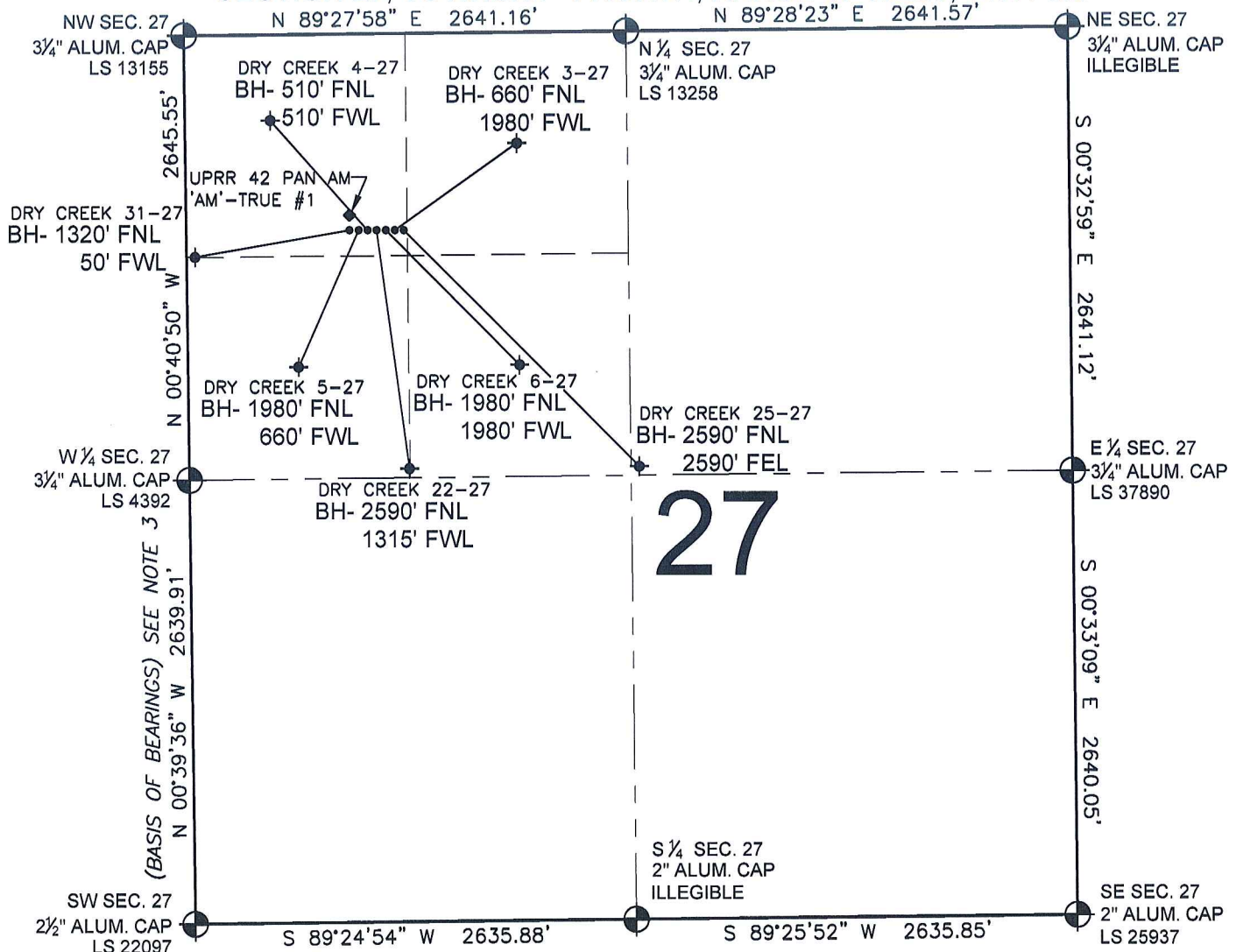


PAD DRAWING - DRY CREEK 7 PAD

SECTION 27, TOWNSHIP 1 NORTH, RANGE 67 WEST, 6TH P.M.



LEGEND

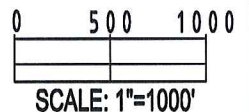
- = EXISTING MONUMENT
 = BOTTOM HOLE
 BH= BOTTOM HOLE
 = PROPOSED WELL
 = EXISTING WELL

NOTES:

- THIS SURVEY WAS DONE BY GPS METHODS AND CONFORMS TO THE MINIMUM STANDARDS SET BY THE C.O.G.C.C., RULE NO. 215 2. ELEVATIONS SHOWN AT THE WELL HEAD, AS WELL AS HORIZONTAL CONTROL, ARE BASED ON GPS-RTK VALUES DERIVED FROM DOING 2-HOUR STATIC GPS SESSIONS AND REDUCTIONS USING O.P.U.S. SOLUTIONS.
VERTICAL = NAVD88; HORIZONTAL = NAD83/92
- THE BEARINGS SHOWN HEREON ARE BASED ON GPS OBSERVATIONS BETWEEN THE MONUMENTS SHOWN HEREON AS FOUND ON THE FIELD DATE BELOW.
- DISTANCES SHOWN ARE AT GROUND LEVEL, AS MEASURED IN THE FIELD, WITH TIES TO WELLS MEASURED AT A PERPENDICULAR TO SECTION LINES.

NOTES:

DRY CREEK 31-27 TO BE AT 1169' FNL, 1181' FWL.
 BOTTOM HOLE AT 1320' FNL & 50' FWL.
 DRY CREEK 5-27 TO BE AT 1169' FNL, 1197' FWL.
 BOTTOM HOLE AT 1980' FNL & 660' FWL.
 DRY CREEK 4-27 TO BE AT 1169' FNL, 1213' FWL.
 BOTTOM HOLE AT 510' FNL & 510' FWL.
 DRY CREEK 22-27 TO BE AT 1169' FNL, 1229' FWL.
 BOTTOM HOLE AT 2590' FNL & 1315' FWL.
 DRY CREEK 6-27 TO BE AT 1169' FNL, 1245' FWL.
 BOTTOM HOLE AT 1980' FNL & 1980' FWL.
 DRY CREEK 3-27 TO BE AT 1169' FNL, 1261' FWL.
 BOTTOM HOLE AT 660' FNL & 1980' FWL.
 DRY CREEK 25-27 TO BE AT 1169' FNL, 1277' FWL.
 BOTTOM HOLE AT 2590' FNL & 2590' FEL.
 UPRR 42 PAN AM 'AM'-TRUE #1 IS 1119' FNL, 1181' FWL.



REVISIONS		PREPARED BY:	 PFS Petroleum Field Services, LLC 1801 W. 13th Ave. Denver, CO 80204
INITIAL	DATE		

KERR-MCGEE OIL & GAS ONSHORE LP

FIELD DATE: 09-09-09	PAD NAME: DRY CREEK 7 PAD
DRAWING DATE: 09-14-09	SURFACE LOCATION:
BY: SMF	WELD COUNTY, COLORADO NW 1/4 NW 1/4, SEC. 27, T1N, R67W