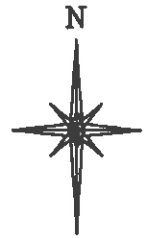
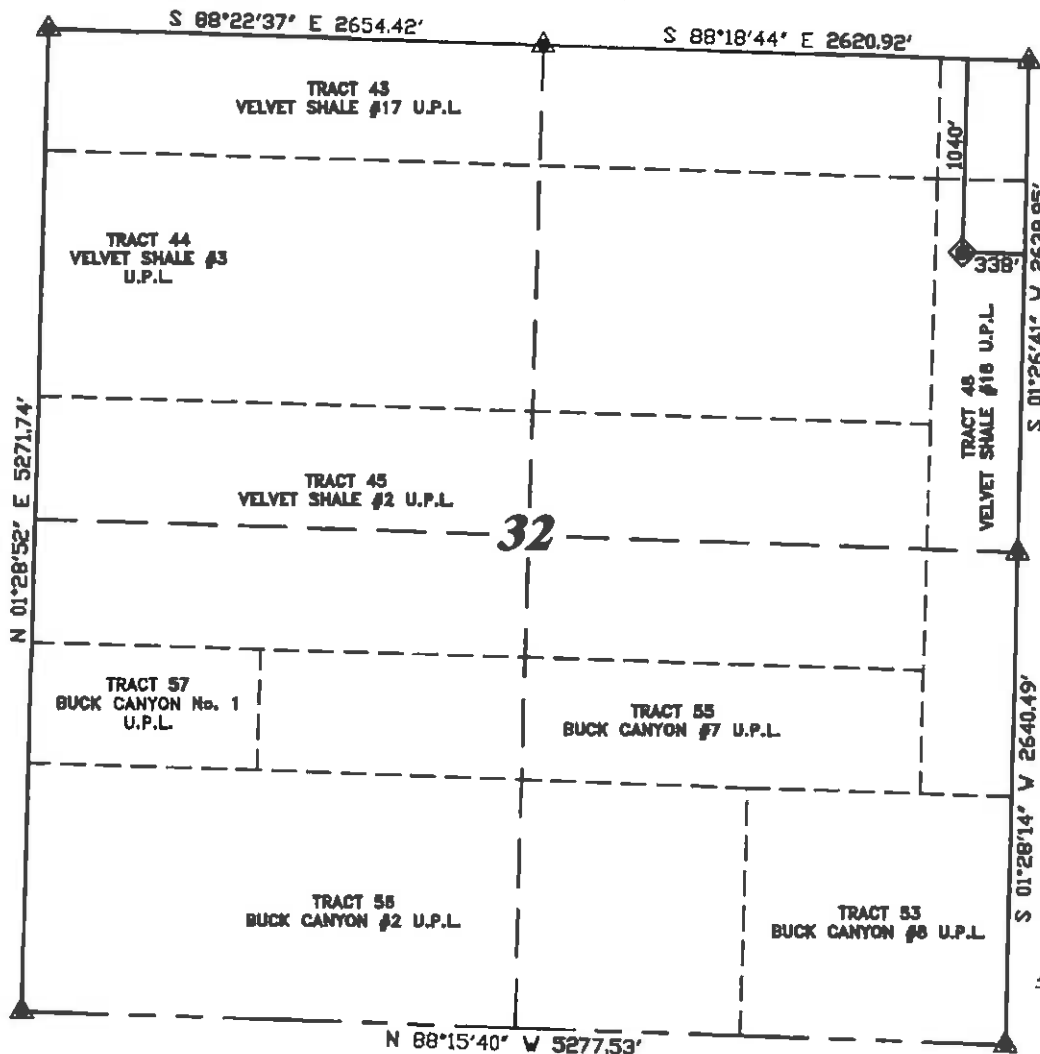


R. 97 W.



SCALE 1" = 1000'

T. 5 S.

LATITUDE (NAD 83)
NORTH 39.574561 DEG.
LONGITUDE (NAD 83)
WEST 108.293480 DEG.

LATITUDE (NAD 27)
NORTH 39.574584 DEG.
LONGITUDE (NAD 27)
WEST 108.292839 DEG.

NORTHING
646258.44
EASTING
1212843.03

BASIS OF BEARING/DATUM
SPCS CO CENTRAL NAD 27
BASED ON NGS TRIANGULATION
STATION "MARC"

NOTES

HIGH PLATEAU DESERT
EXISTING WELL FEATURES WITHIN
400' RADIUS OF WELL SITE.

GPS OPERATOR MARK BESSIE
OBSERVED A POOP OF 2.8.
ALL GPS OBSERVATIONS ARE IN
COMPLIANCE WITH COGCC RULE No.215.

CHEVRON TR
12-33-597

UNGRADED ELEVATION:
8259.4'

BASIS OF ELEVATION: USGS
CONTROL POINT ELEVATION LOCATED
AT THE SW CORNER SECTION 28,
T5S, R97W, ELEVATION: 7913'



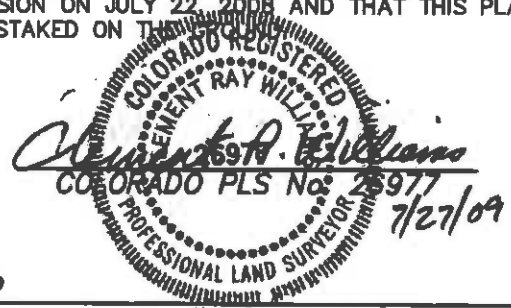
SURVEYOR'S STATEMENT

I, CLEMENT R. WILLIAMS, OF ROCK SPRINGS, WYOMING, HEREBY STATE: THIS MAP WAS MADE FROM NOTES TAKEN DURING AN ACTUAL FIELD SURVEY DONE UNDER MY DIRECT SUPERVISION ON JULY 22, 2008 AND THAT THIS PLAT CORRECTLY SHOWS THE LOCATION OF CHEVRON TR 12-33-597 AS STAKED ON THE GROUND.

LEGEND

- ◆ WELL LOCATION
- BOTTOM HOLE LOC. (APPROX)
- FOUND MONUMENT
- ▲ PREVIOUSLY FOUND MONUMENT

CHEVRON TR 41-32-597 PAD



RIFFIN & ASSOCIATES, INC.
1414 ELK ST., ROCK SPRINGS, WY 82901

(307) 362-5028

DRAWN: 7/27/09 - MMM

SCALE: 1" = 1000'

REVISED: NA

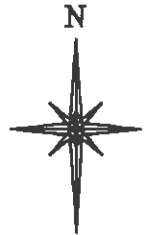
DRG JOB No. 13206

EXHIBIT 1

PLAT OF DRILLING LOCATION
FOR
WILLIAMS PRODUCTION RMT COMPANY

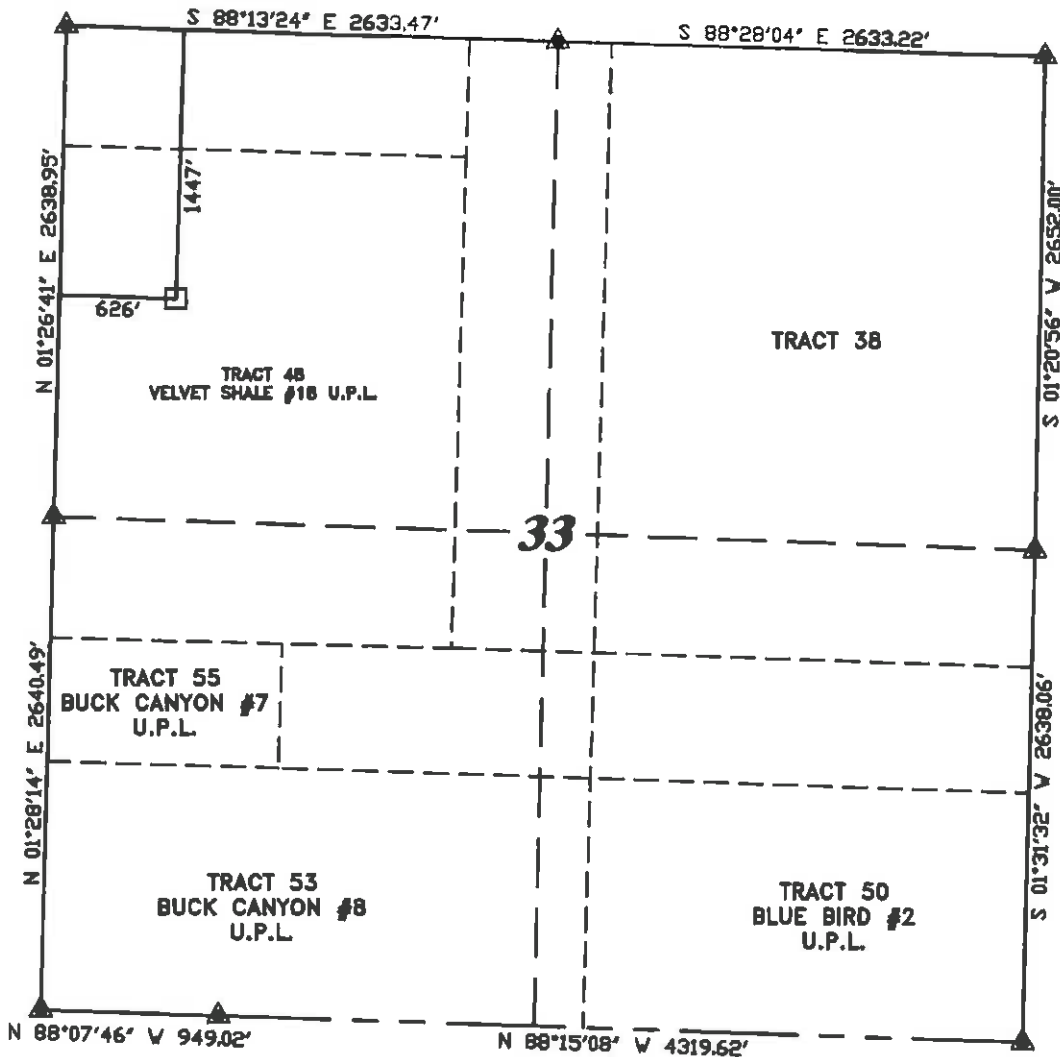
1040' F/NL & 338' F/EL, SECTION 32,
T. 5 S., R. 97 W., 6th P.M.
GARFIELD COUNTY, COLORADO

R. 97 W.



SCALE 1" = 1000'

T. 5 S.



LATITUDE (NAD 83)
NORTH 39.573442 DEG.
LONGITUDE (NAD 83)
WEST 108.290052 DEG.
LATITUDE (NAD 27)
NORTH 39.573466 DEG.
LONGITUDE (NAD 27)
WEST 108.289411 DEG.

NORTHING
645821
EASTING
1213796

BASIS OF BEARING/DATUM
SPCS CO CENTRAL NAD 27
BASED ON NGS TRIANGULATION
STATION "MARC"

NOTES

HIGH PLATEAU DESERT
EXISTING WELL FEATURES WITHIN
400' RADIUS OF WELL SITE.

GPS OPERATOR MARK BESSIE
OBSERVED A PDOP OF 2.8.
ALL GPS OBSERVATIONS ARE IN
COMPLIANCE WITH COGCC RULE No.215.

CHEVRON TR
12-33-597
BHL

BASIS OF ELEVATION: USGS
CONTROL POINT ELEVATION LOCATED
AT THE SW CORNER SECTION 28,
T5S, R97W, ELEVATION: 7913'



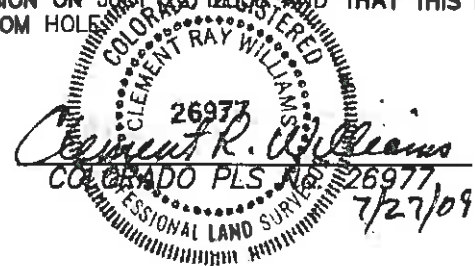
SURVEYOR'S STATEMENT

I, CLEMENT R. WILLIAMS, OF ROCK SPRINGS, WYOMING, HEREBY STATE: THIS MAP WAS MADE FROM NOTES TAKEN DURING AN ACTUAL FIELD SURVEY DONE UNDER MY DIRECT SUPERVISION ON JULY 27, 2009, AND THAT THIS PLAT CORRECTLY SHOWS THE LOCATION OF CHEVRON TR 12-33-597 BOTTOM HOLE.

LEGEND

- ◆ WELL LOCATION
- BOTTOM HOLE LOC. (APPROX)
- FOUND MONUMENT
- ▲ PREVIOUSLY FOUND MONUMENT

CHEVRON TR 41-32-597 PAD



RIFFIN & ASSOCIATES, INC.
1414 ELK ST., ROCK SPRINGS, WY 82901

PLAT OF DRILLING LOCATION
FOR
WILLIAMS PRODUCTION RMT COMPANY
1447' F/NL & 626' F/WL, SECTION 33,
T. 5 S., R. 97 W., 6th P.M.
GARFIELD COUNTY, COLORADO

DRAWN: 7/27/09 - MMM

SCALE: 1" = 1000'

REVISED: NA

DRG JOB No. 18208

EXHIBIT 1