

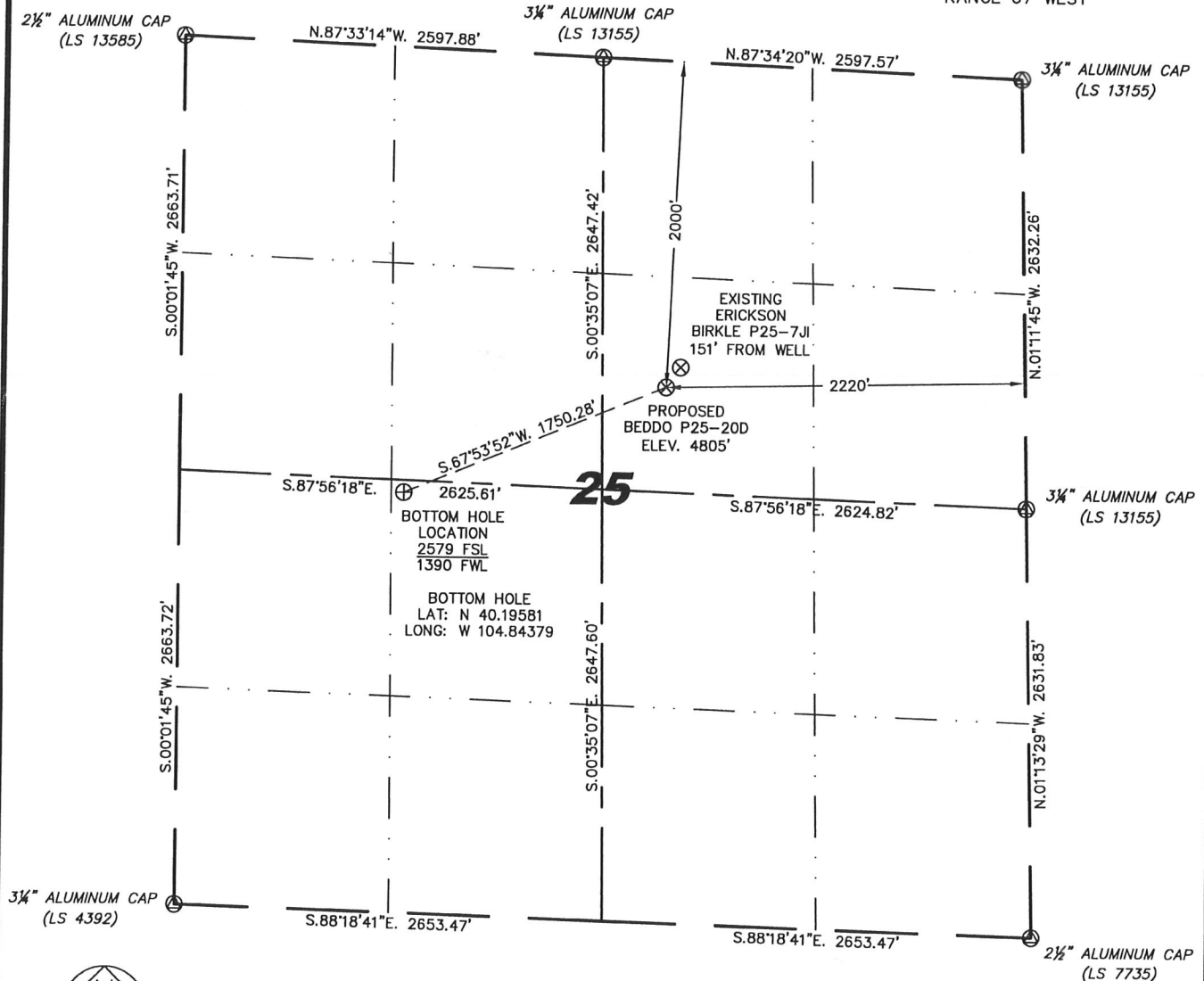
Steil Surveying Services, LLC

1102 West 19th Street P.O. BOX 2073

Cheyenne, Wyoming 82009

WELL LOCATION CERTIFICATE
THIS MAP DOES NOT REPRESENT A BOUNDARY SURVEY

SECTION 25
TOWNSHIP 3 NORTH
RANGE 67 WEST



0 1000

Scale: 1" = 1000'

IN ACCORDANCE WITH A REQUEST FROM MATT CAMPBELL - NOBLE ENERGY INC., STEIL SURVEYING SERVICES, LLC HAS DETERMINED THE LOCATION OF THE BEDDO P25-20D WELL TO BE 2000' FNL, 2220' FEL, AS MEASURED AT NINETY (90) DEGREES FROM THE SECTION LINES, SECTION 25, TOWNSHIP 3 NORTH, RANGE 67 WEST, 6TH PRINCIPLE MERIDIAN, WELD COUNTY, COLORADO.

I HEREBY CERTIFY THAT THIS WELL LOCATION CERTIFICATE WAS PREPARED BY ME, OR UNDER MY DIRECT SUPERVISION, THAT THE FIELD WORK WAS COMPLETED ON 07/07/2009, FOR AND ON BEHALF OF NOBLE ENERGY INC., THAT IT IS NOT A LAND SURVEY PLAT OR AN IMPROVEMENT SURVEY PLAT, AND THAT IT IS NOT TO BE RELIED UPON FOR ESTABLISHMENT OF FENCE, BUILDING, OR OTHER FUTURE IMPROVEMENT LINES.

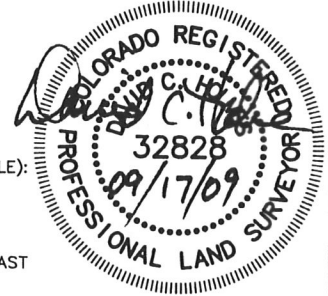
NOTES:

- 1) BASIS OF BEARINGS FOR THIS MAP ARE BASED UPON GPS OBSERVATIONS MADE ON 11/05/2008 BETWEEN MONUMENTS LOCATED AT THE SOUTHEAST SECTION CORNER AND THE NORTHEAST SECTION CORNER OF SAID SECTION AND WITH ALL BEARINGS SHOWN HEREON RELATIVE THERETO.
- 2) ELEVATIONS ARE BASED UPON NGS OPUS SOLUTION NAVD 88 DATUM.
- 3) THE NEAREST EXISTING WELL IS: ERICKSON BIRKLE P25-7J, 151' NORTHEAST.
- 4) SEE VISIBLE IMPROVEMENTS EXHIBIT FOR ALL IMPROVEMENTS WITHIN 400'.
- 5) THE LOCATION FALLS IN PASTURE LAND.

LATITUDE & LONGITUDE (NAD 83 SURFACE HOLE):
LATITUDE: N 40.19758'
LONGITUDE: W 104.83796"
PDOP: 2.8
QUARTER-QUARTER: SW/4NE/4
NEAREST PROPERTY LINE: 480'+/- TO THE EAST

LEGEND

- (A) FOUND SURVEY MONUMENT PER MONUMENT RECORD - EXCEPTIONS NOTED.
- (C) CALCULATED DIMENSION



NOTICE: According to Colorado law you MUST commence any legal action based upon any defect in this W.L.C. within three years after you first discover such defect. In no event may any action based upon any defect in this W.L.C. be commenced more than ten years from this said date of the certification shown hereon.

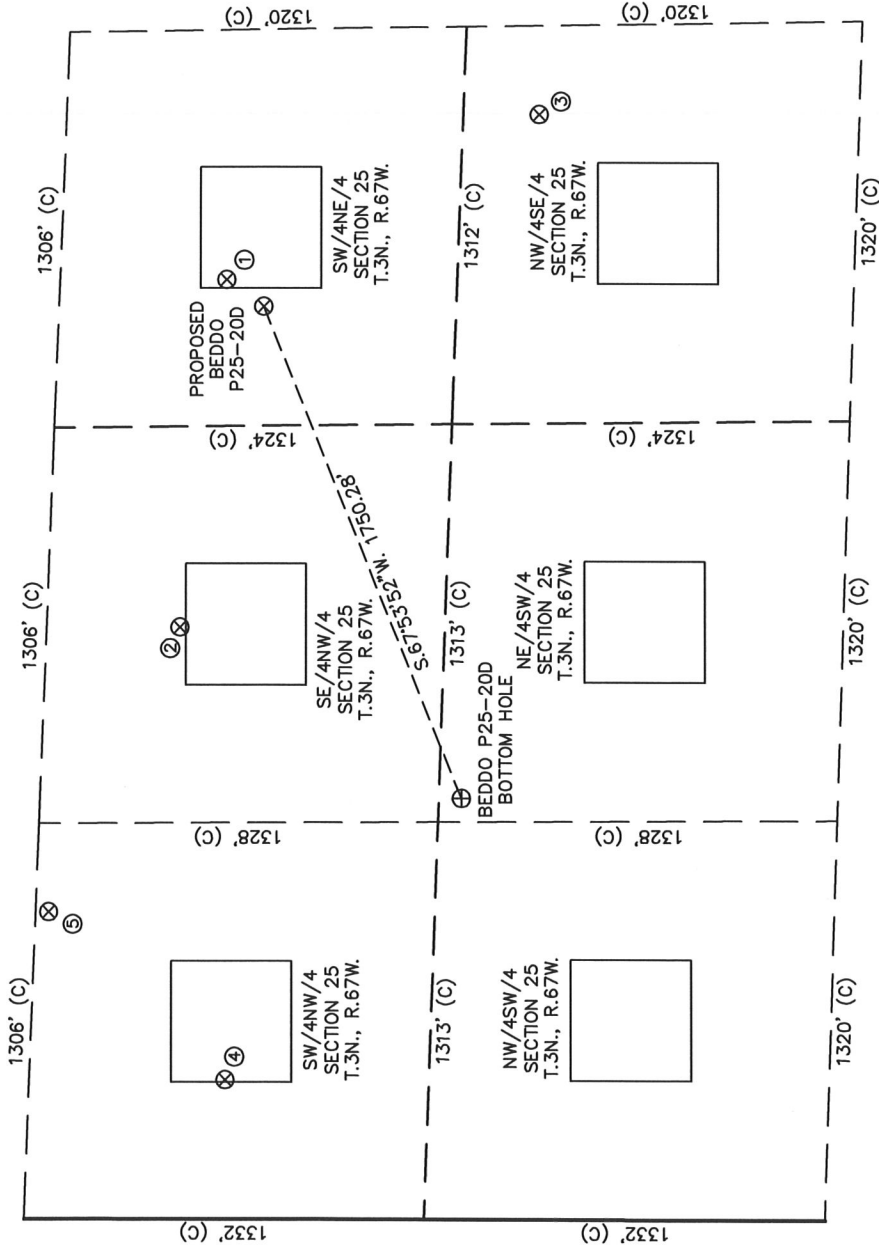
David C. Holmes
Professional Land Surveyor Registration No. 32828
State of Colorado

Completed 09/16/2009

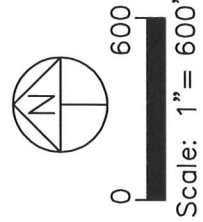
JOB #: 09086

SITE SKETCH - BEDDO P25-20D

SECTION 25
TOWNSHIP 3 NORTH
RANGE 67 WEST



- | | | | | |
|--|--|---|---|--|
| <p>① ERICKSON
BIRKLE P25-7J
SW/NE SEC. 25
1874' FNL
2129' FEL
EL 4804'
N 40.19791
W 104.83764
PDOP 2.0</p> | <p>② ERICKSON
BIRKLE P25-6J
SE/NW SEC. 25
1768' FNL
1953' FEL
EL 4803'
N 40.19836
W 104.84174
PDOP 2.2</p> | <p>③ HSR-MAGNESS
10-25
NW/SE SEC. 25
2386' FSL
1604' FEL
EL 4807'
N 40.19505
W 104.83571
PDOP 1.8</p> | <p>④ HSR BEDDO
5-25
SW/NW SEC. 25
1982' FNL
460' FEL
EL 4807'
N 40.19798
W 104.84709
PDOP 3.4</p> | <p>⑤ ERICKSON
BIRKLE 2-25
SW/SW SEC. 25
1371' FNL
1013' FEL
EL 4803'
N 40.19958
W 104.84509
PDOP 2.6</p> |
|--|--|---|---|--|



- NOTES:
- 1) THIS SKETCH DOES NOT REPRESENT A BOUNDARY SURVEY.
 - 2) THE DATUM FOR THE LATITUDES AND LONGITUDES ON THIS SKETCH IS NAD83.