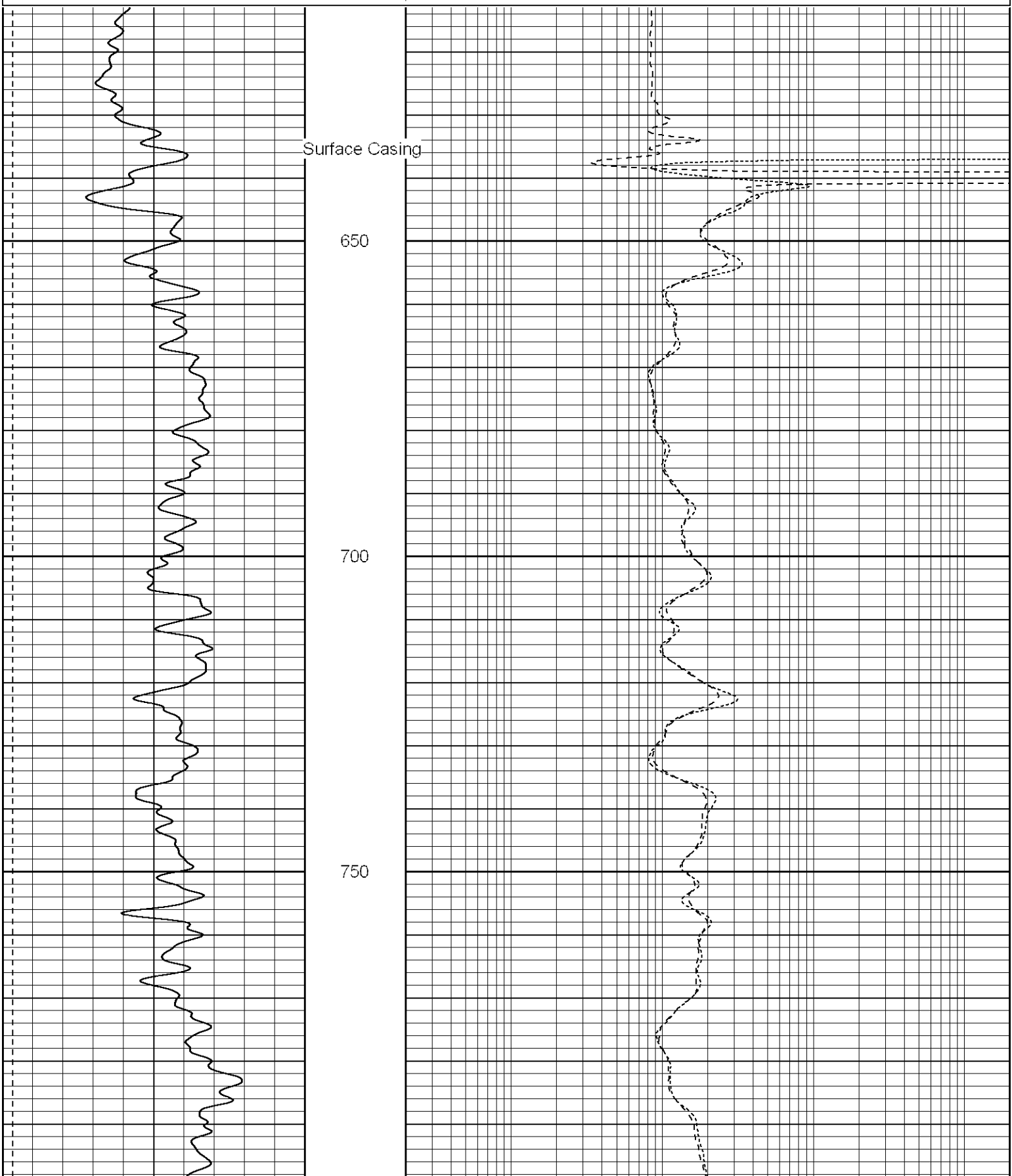
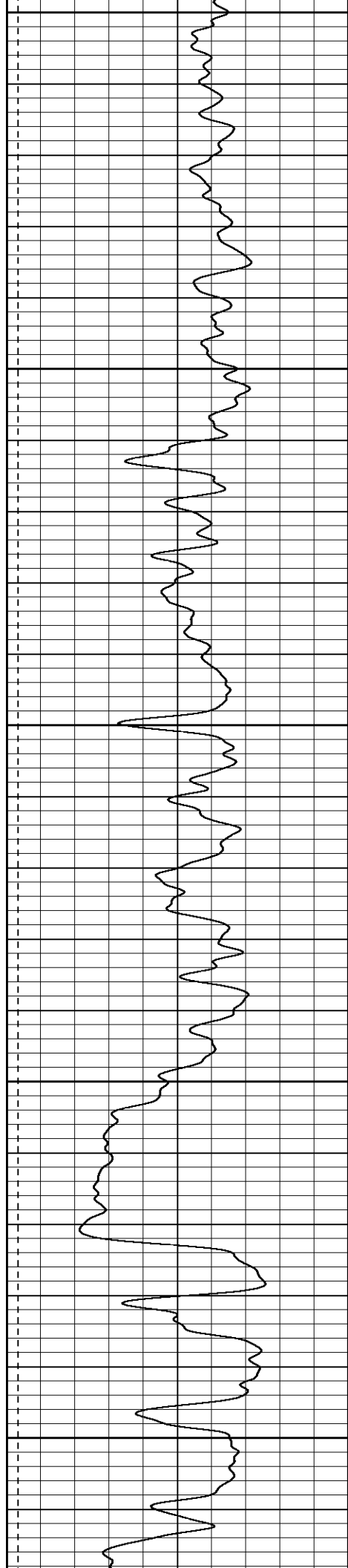


# Patterson

Company XTO Energy		Company XTO Energy Inc.	
Well Hill Ranch 2		Well Hill Ranch 22-16	
Field Purgatoire F		Field Purgatoire River	
County Las Animas		County Las Animas	
Location:		State Colorado	
		423' FSL	
		SEC 22 TWP	
		Permanent Datum	Grou
		Log Measured From	Grou
		Drilling Measured From	Grou
Date		09-19-06	
Run Number		One	
Depth Driller		2450'	
Depth Logger		2448'	
Bottom Logged Interval		2446'	
Top Log Interval		Surface Casing	
Casing Driller		8 5/8" @ 636'	
Casing Logger		636'	
Bit Size		7 7/8"	
Type Fluid in Hole		Water	
Density / Viscosity		///	
pH / Fluid Loss		///	
Source of Sample		///	
Rm @ Meas. Temp		///	
Rmf @ Meas. Temp		///	
Rmc @ Meas. Temp		///	
Source of Rmf / Rmc		///	
Rm @ BHT		///	
Time Circulation Stopped		12:00 p.m.	
Time Logger on Bottom		2:15 p.m.	
Maximum Recorded Temperature		114	
Equipment Number		T677	
Location		Trinidad	
Recorded By		L. Smith	
Witnessed By		Mr. Don Johnso	

0	GR (GAPI)	200	0.2	RILD (Ohm-m)	2000
-200	SP (mV)	0	0.2	RILM (Ohm-m)	2000
			0.2	RLL3 (Ohm-m)	2000





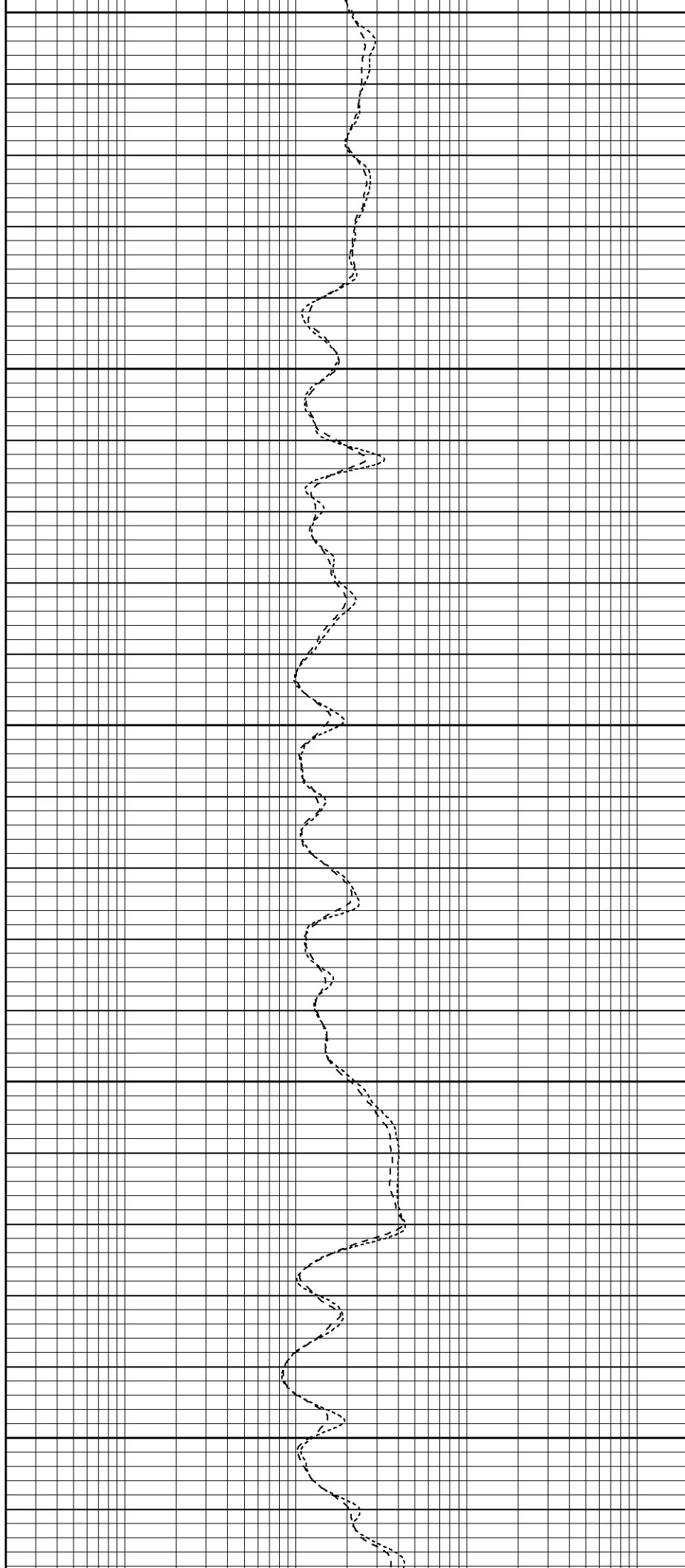
800

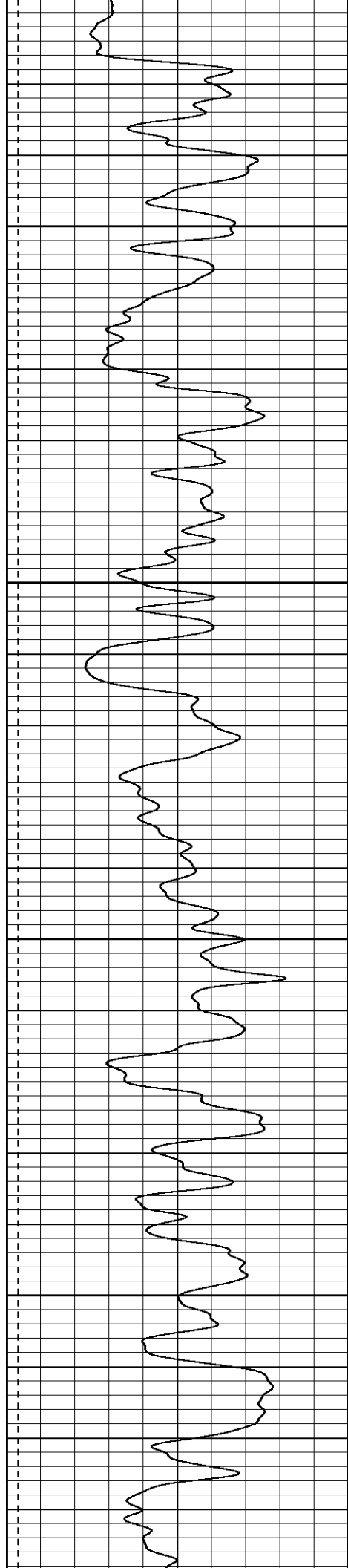
850

900

950

1000



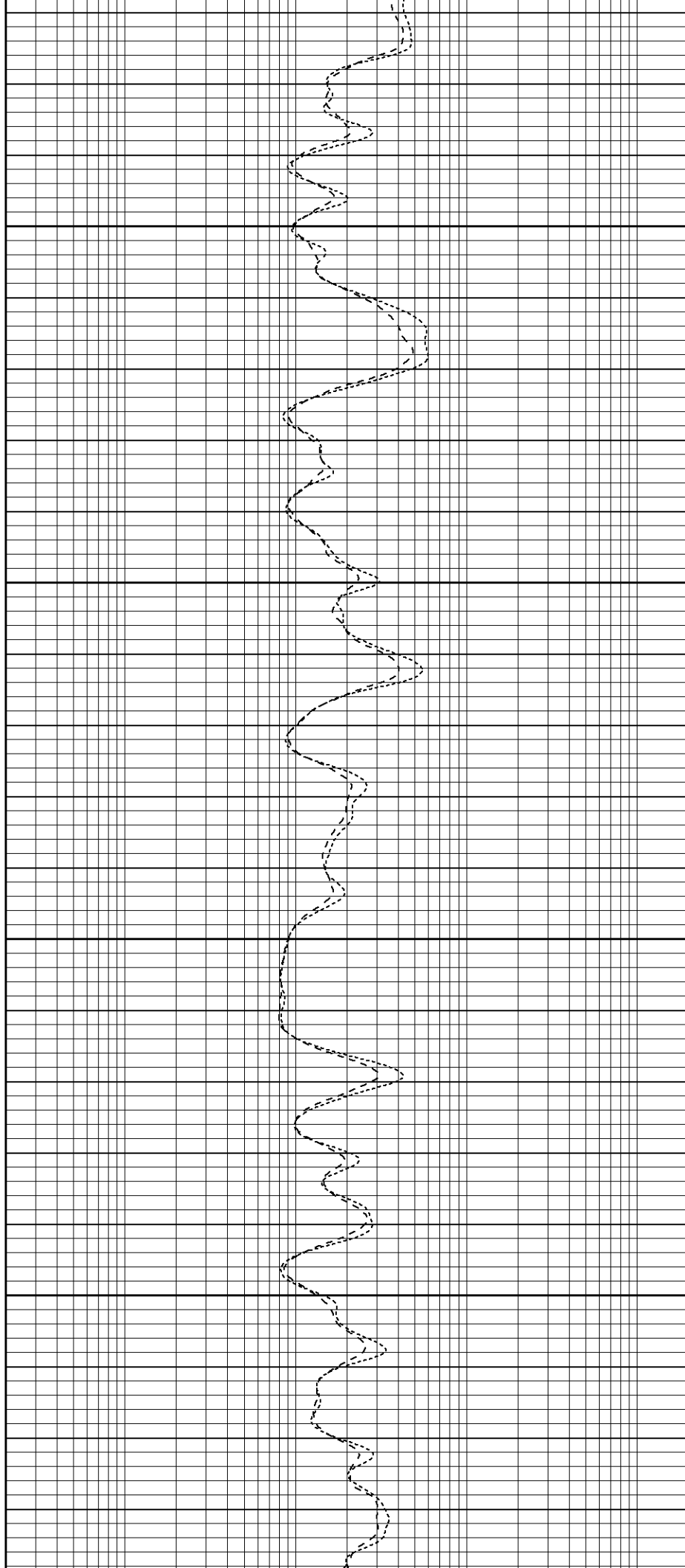


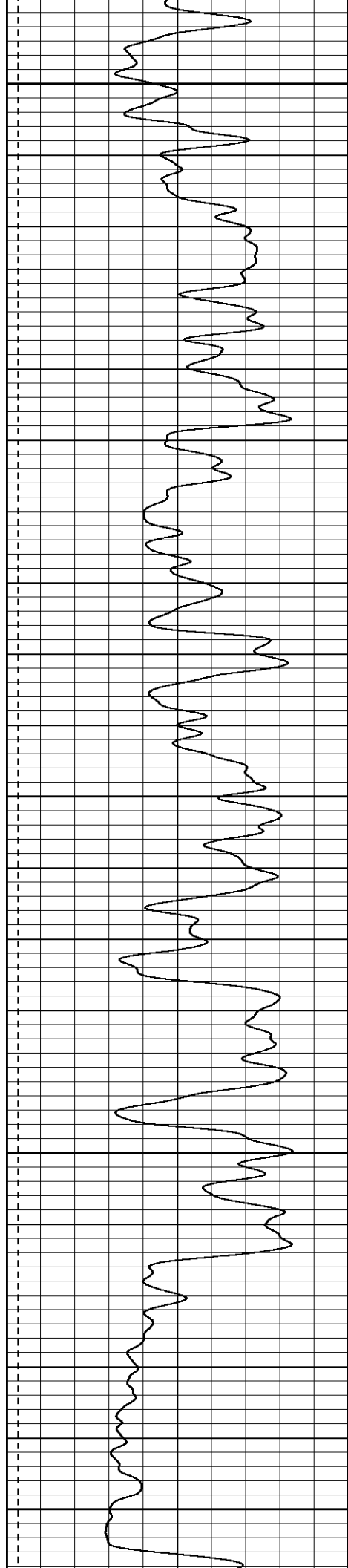
1050

1100

1150

1200





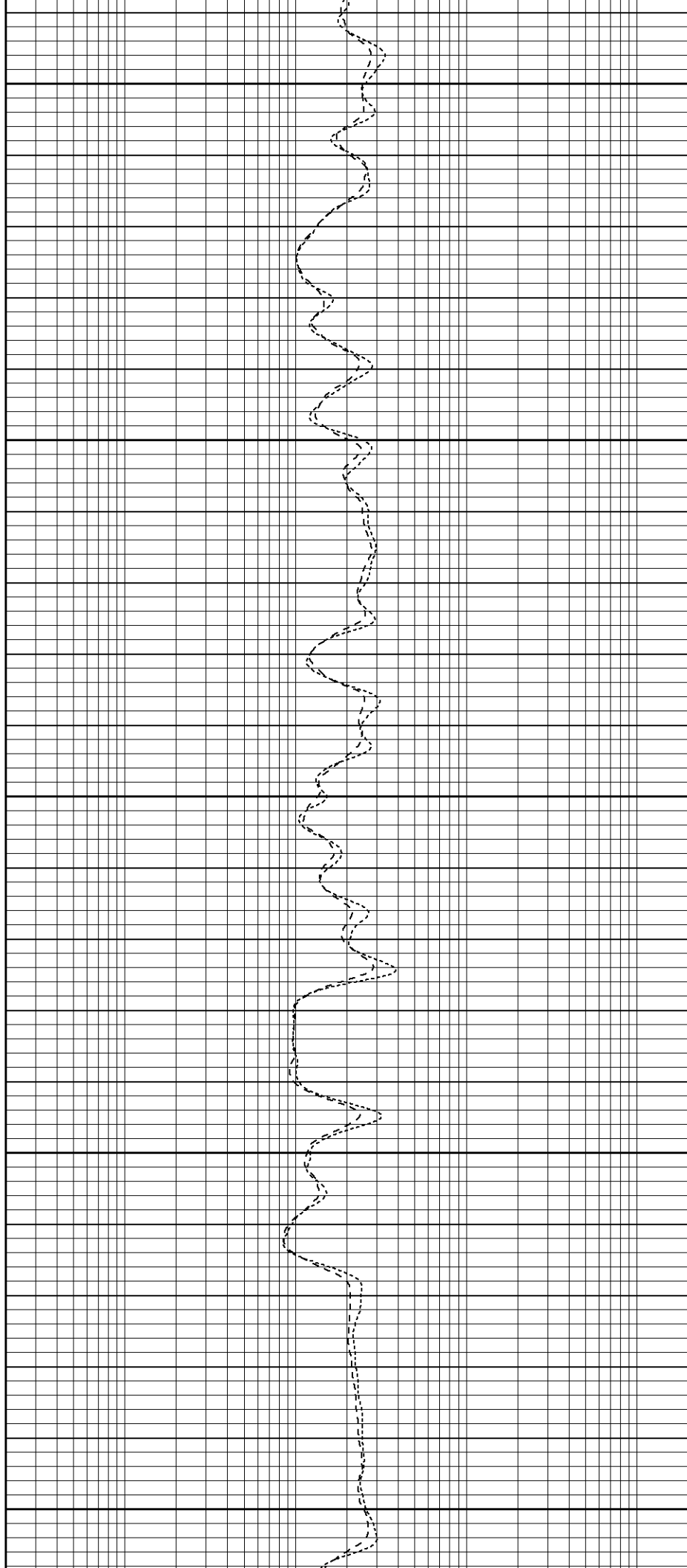
1250

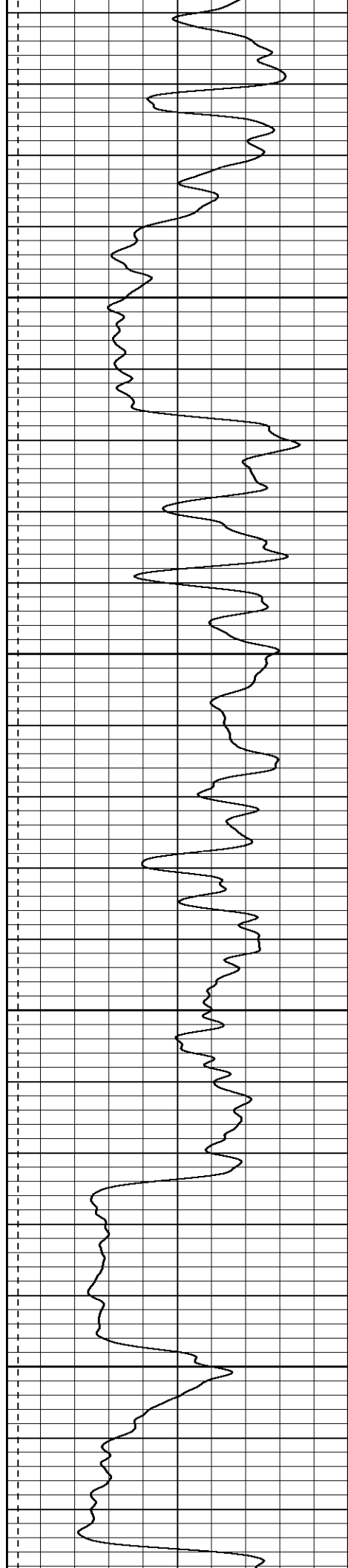
1300

1350

1400

1450



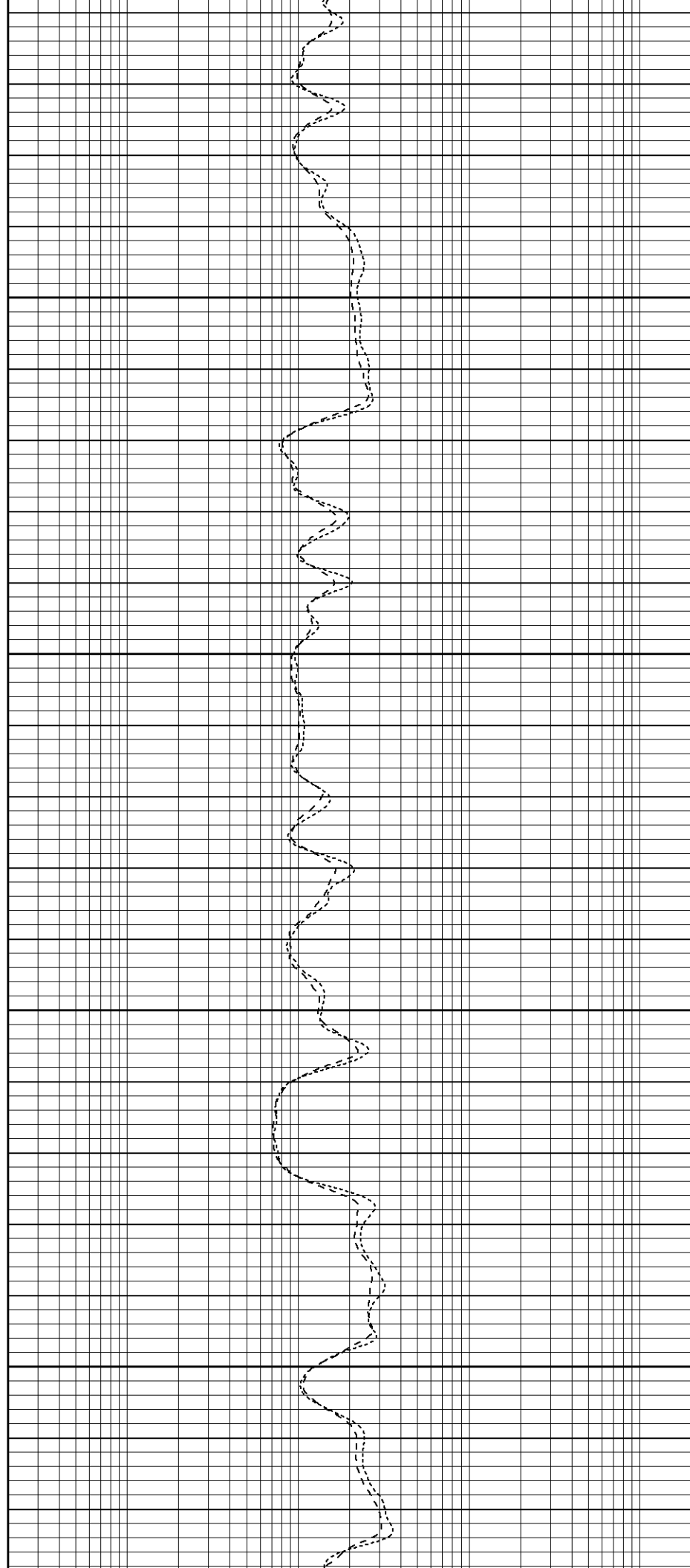


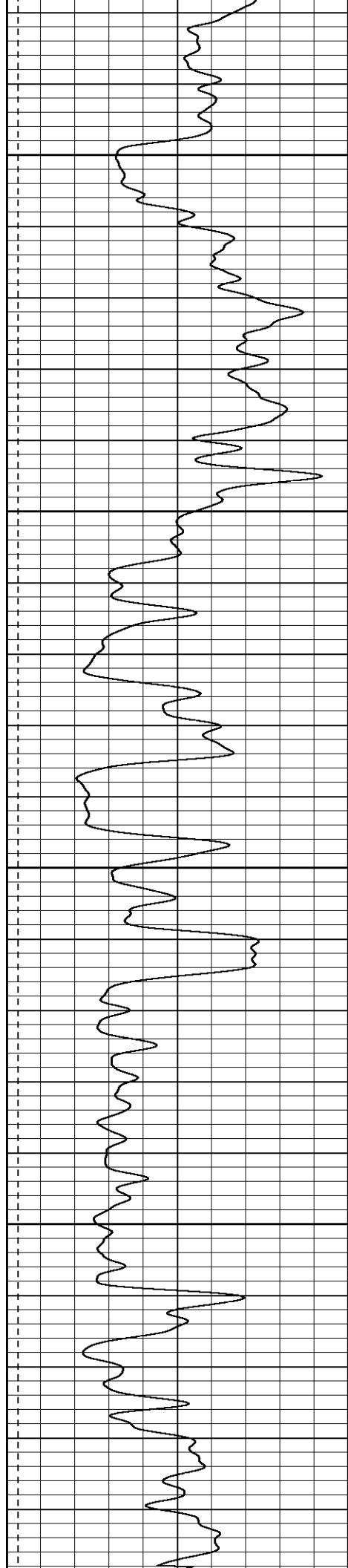
1500

1550

1600

1650



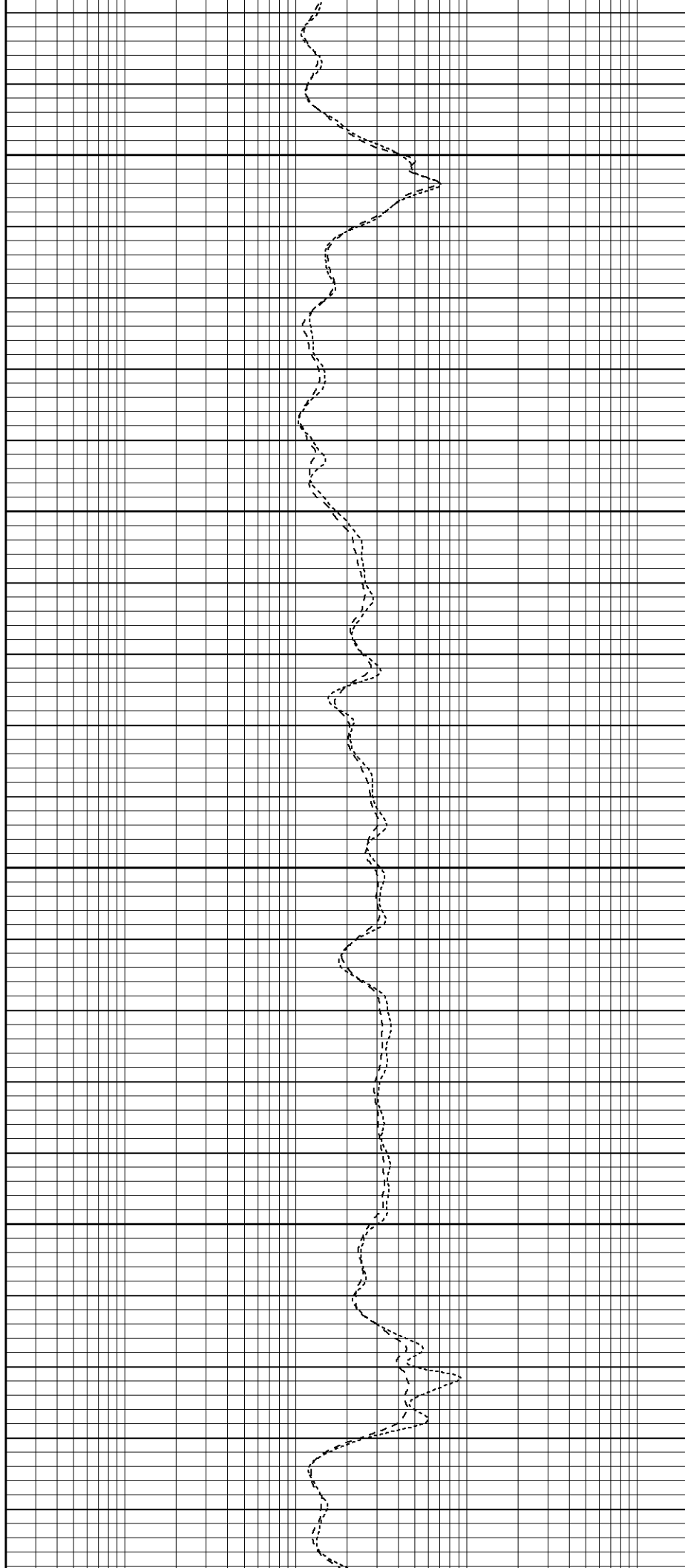


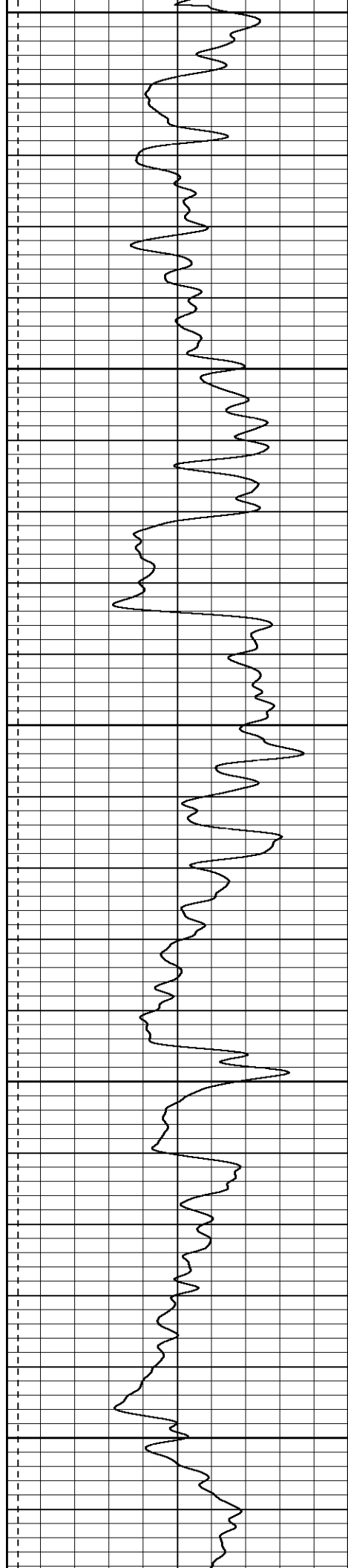
1700

1750

1800

1850





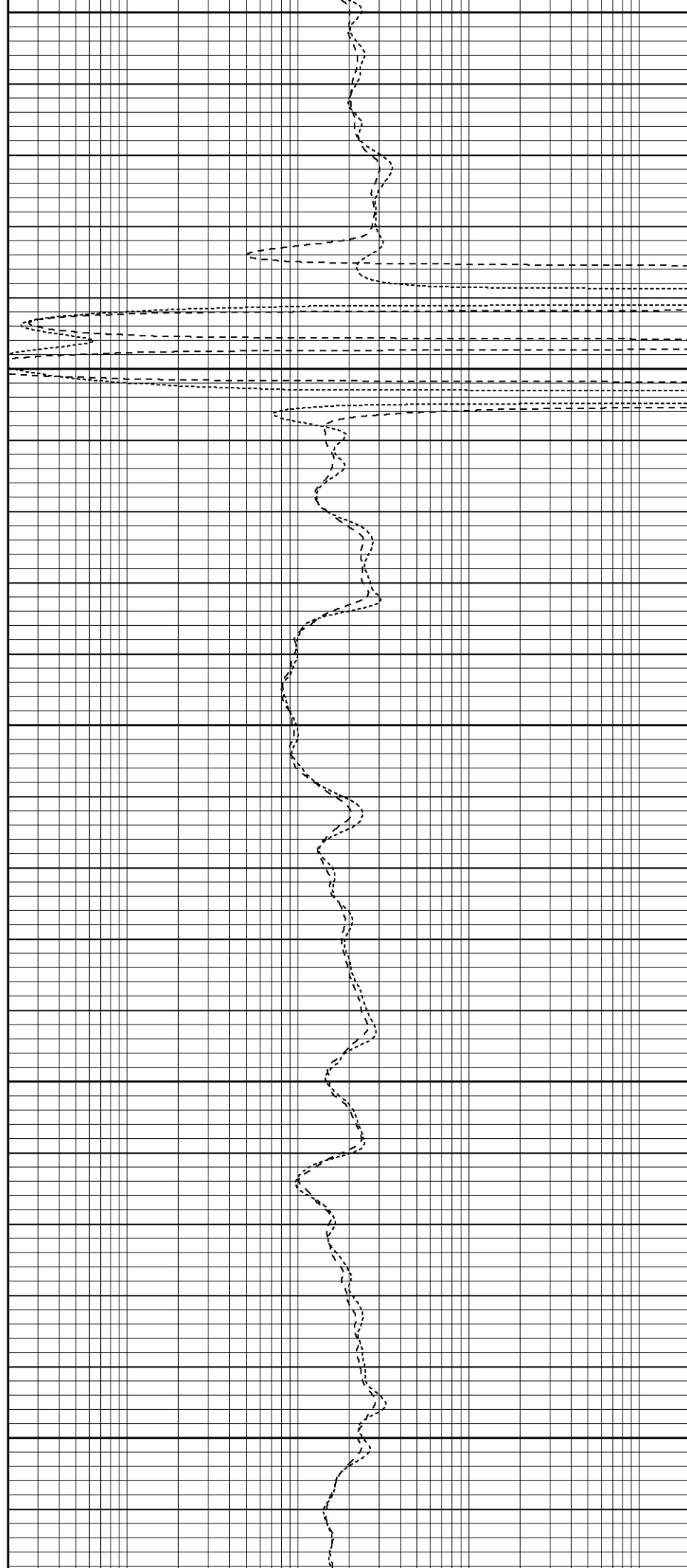
1900

1950

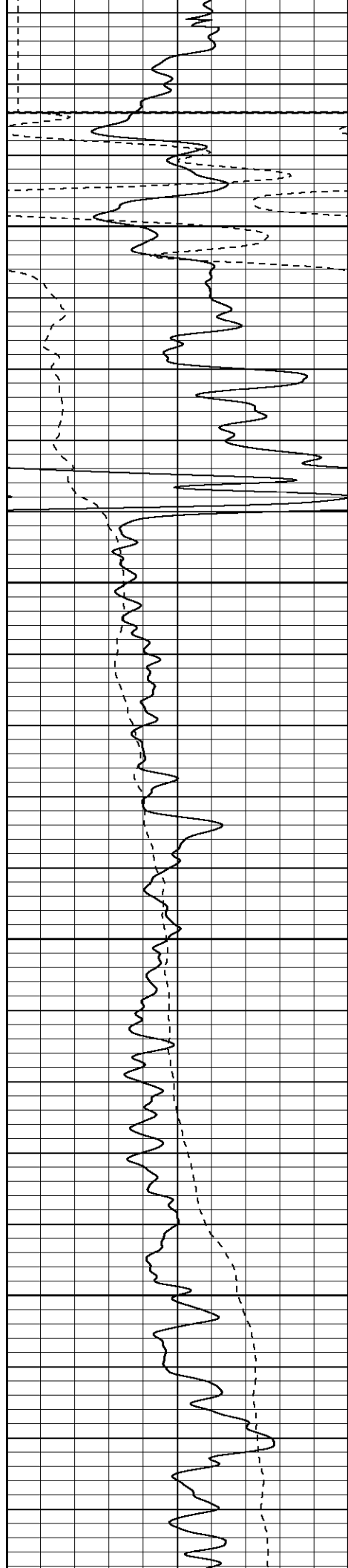
2000

2050

2100







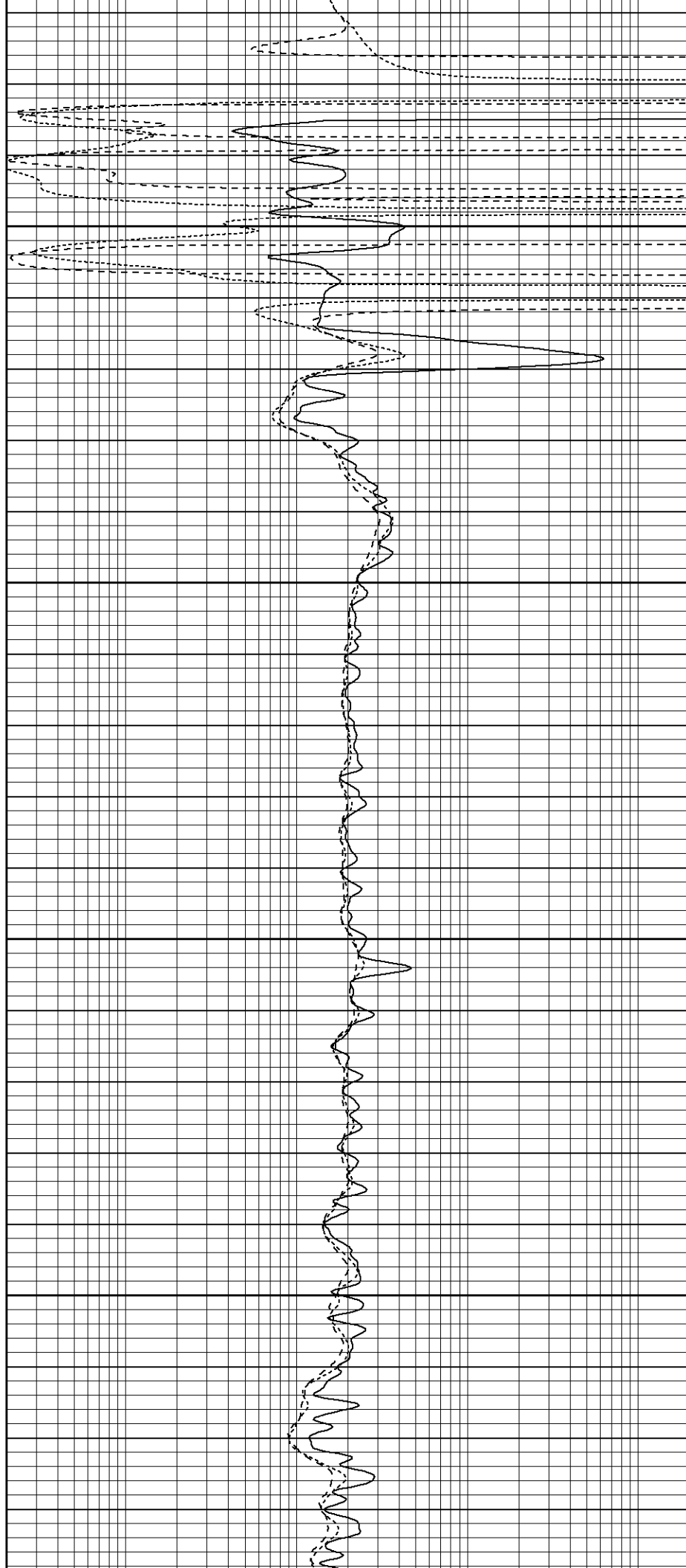
Fluid Level

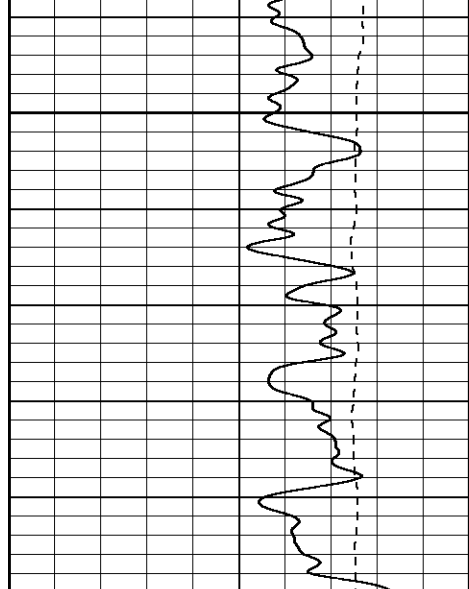
2150

2200

2250

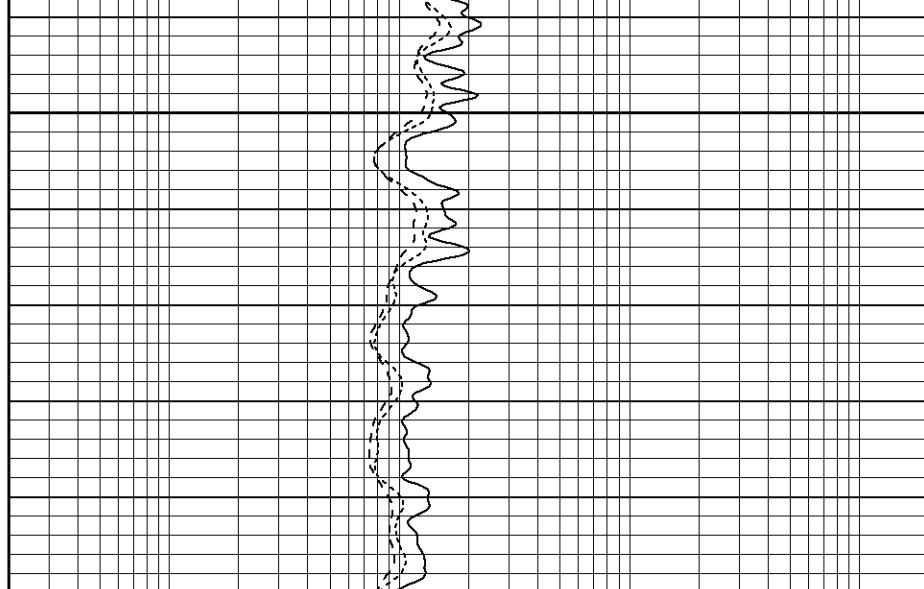
2300

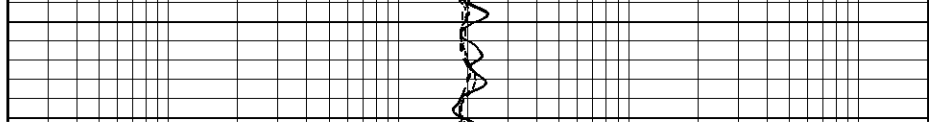
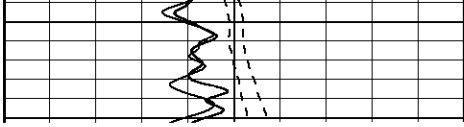




2350

2400





Serial-Model:	5375-G
Surface Cal Performed:	Tue Sep 19 09:20:43 2006
Downhole Cal Performed:	Tue Sep 19 13:54:18 2006

### Surface Calibration

Loop:	Readings			References			Results	
	Air	Loop		Air	Loop		m	b
Deep	0.009	0.627	V	0.000	500.000	mmho-m	807.874	-6.938
Medium	0.010	0.749	V	0.000	550.000	mmho-m	744.032	-7.579
Internal:	Zero	Cal		Zero	Cal		m	b
Deep	0.008	0.628	V	0.000	500.000	mmho-m	806.776	-6.574
Medium	0.010	0.750	V	0.000	550.000	mmho-m	743.719	-7.472

### Downhole Calibration

Internal:	Readings			References			Results	
	Zero	Cal		Zero	Cal		m	b
Deep	-1.218	498.797	mmho-m	-0.355	500.325	mmho-m	1.001	0.865
Medium	-0.018	549.169	mmho-m	-0.104	550.127	mmho-m	1.002	-0.086
Shallow	2.506	0.017	V	500.000	2.000	Ohm-m	149.044	-1.382

### Compensated Density Calibration Report

Serial-Model:	902-2.75POH
Source / Verifier:	/
Master Calibration Performed:	Mon Sep 18 13:21:20 2006

### Master Calibration

	Density		Far Detector		Near Detector	
Magnesium	1.710	g/cc	1012.92	496.56	cps	
Aluminum	2.570	g/cc	181.19	249.00	cps	
Spine Angle = 68.15			Density/Spine Ratio = 0.464			
	Size		Reading			
Small Ring	7.70	in	1.84	V		
Large Ring	17.00	in	4.32	V		

### Neutron Calibration Report

Serial Number:	802
Tool Model:	2.75POH
Performed:	Mon Sep 18 13:58:21 2006
Calibrator Value:	1 NAPI
Calibrator Reading:	1 cps
Sensitivity:	1 NAPI/cps

### Gamma Ray Calibration Report

Serial Number:	804
Tool Model:	2.75POH
Performed:	Mon Sep 18 13:58:21 2006

Performed:	Mon Aug 21 14:48:38 2006	
Calibrator Value:	1.0	GAPI
Background Reading:	0.0	cps
Calibrator Reading:	1.0	cps
Sensitivity:	0.8100	GAPI/cps

Sensor	Offset (ft)	Schematic	Description	Len (ft)	OD (in)	Wt (lb)
CHD	39.37		None	0.75	1.50	5.00
GR	37.84		GR-2.75POH (804) Probe	3.73	2.75	43.00
NEU	32.30		NEU-2.75POH (802) Probe Epithermal	4.75	2.75	58.00
LSD	24.47		CDL-2.75POH (902) Probe	8.43	2.75	106.00
DCAL	24.19		Probe	0.89	3.50	20.00
SSD	23.95					
10pin	21.72					
CILD	10.60		DIL-G (5375) Gearhart	20.83	4.00	345.00
SP	10.60					
CILM	6.89					
RLL3	1.70					
Dataset: /field/well/run1/_plots/_jobs/_dil Total Length: 39.37 ft Total Weight: 577.00 lb O.D. 4.00 in						