

Company XTO Energy Inc. Well Apache Canyon 19-06 Field Purgatoire River County Las Animas State Colorado		Company XTO Energy Inc. Well Apache Canyon 19-06 Field Purgatoire River County Las Animas State Colorado	
Location: 1572' FNL & 1413' FWL SEC 19 TWP 34S RGE 67W Permanent Datum Log Measured From Drilling Measured From		API # : 05 071 08824 00 Ground Level Elevation 7949' Ground Level Ground Level Other Services cdl neutron Elevation K.B. ----- D.F. ----- G.L. 7949'	
Date	08-30-06		
Run Number	One		
Depth Driller	2395'		
Depth Logger	2361'		
Bottom Logged Interval	2359'		
Top Log Interval	Surface Casing		
Casing Driller	8 5/8" @ 628'		
Casing Logger	628'		
Bit Size	7 7/8"		
Type Fluid in Hole	Water		
Density / Viscosity	///		
pH / Fluid Loss	///		
Source of Sample	///		
Rm @ Meas. Temp	///		
Rmf @ Meas. Temp	///		
Rmc @ Meas. Temp	///		
Source of Rmf / Rmc	///		
Rm @ BHT	///		
Time Circulation Stopped	2:15 p.m.		
Time Logger on Bottom	7:20 p.m.		
Maximum Recorded Temperature	114		
Equipment Number	T677		
Location	Trinidad		
Recorded By	L. Smith		
Witnessed By	Mr. Dan Uhl		

>>> Fold Here >>>

All interpretations are opinions based on inferences from electrical or other measurements and we cannot and do not guarantee the accuracy or correctness of any interpretation, and we shall not, except in the case of gross or willful negligence on our part, be liable or responsible for any loss, costs, damages, or expenses incurred or sustained by anyone resulting from any interpretation made by any of our officers, agents or employees. These interpretations are also subject to our general terms and conditions set out in our current Price Schedule.

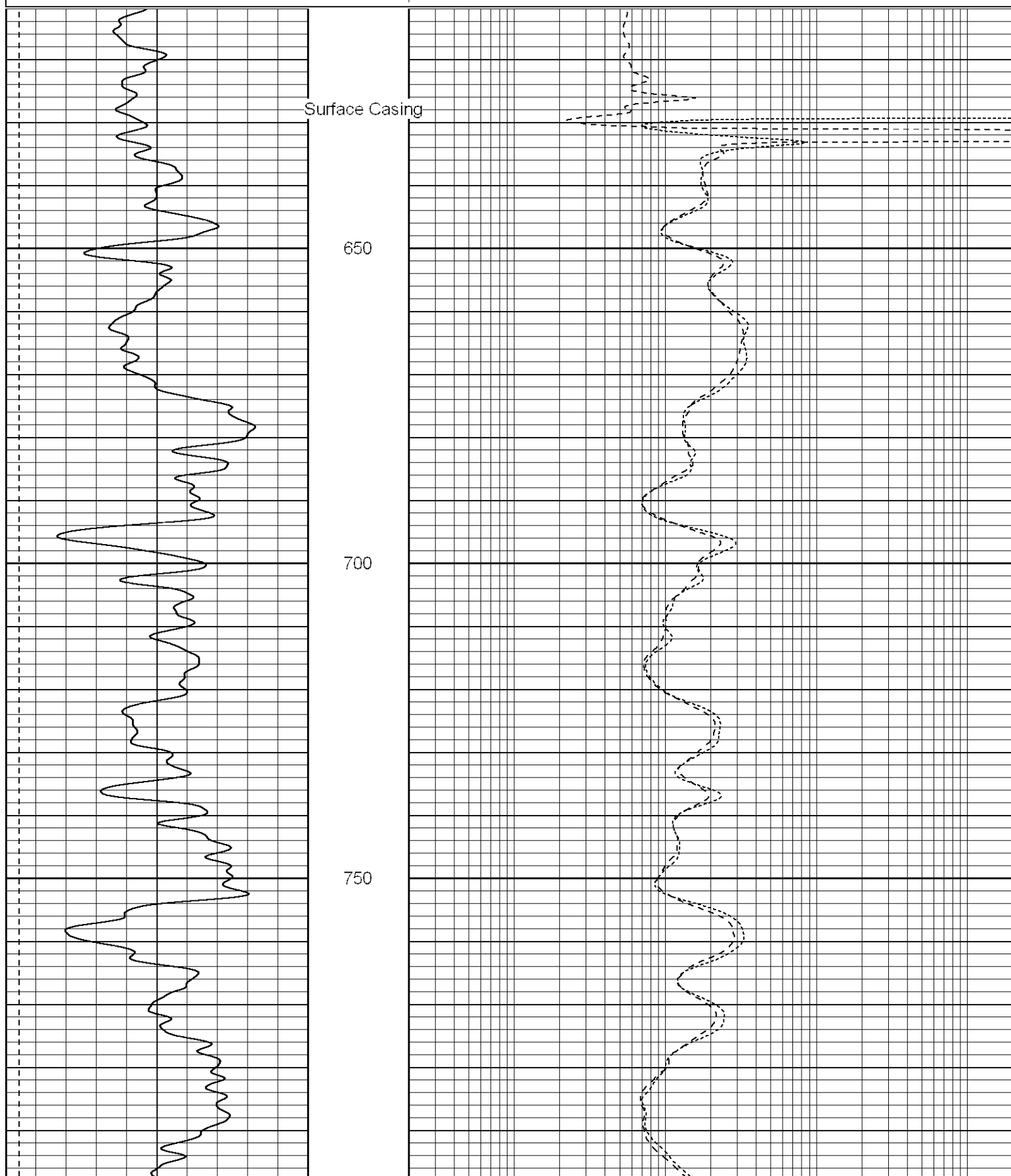
### Comments

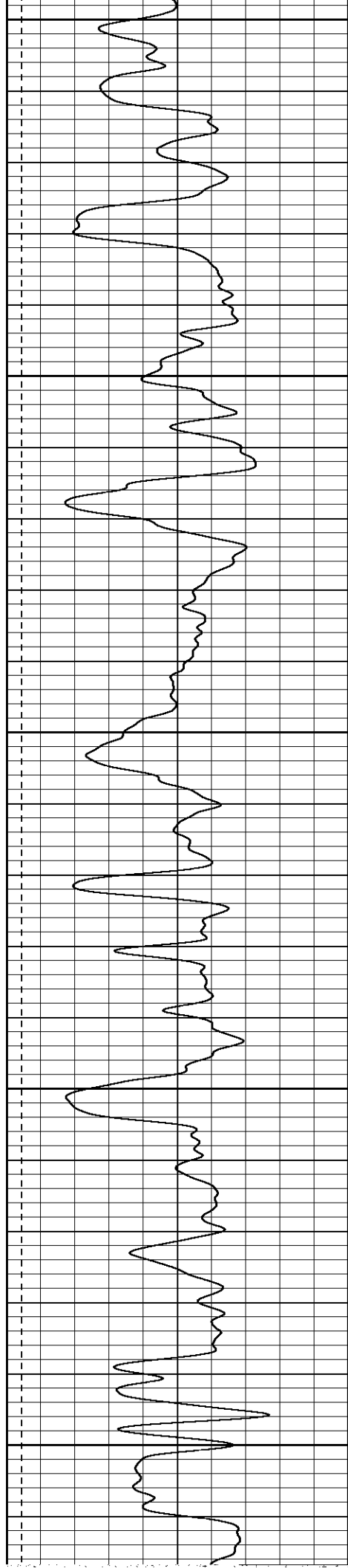
Turn at Bosque before Weston, go right at Big Bingham Canyon,  
 take first left thru green gate, at top of hill take sharp left,  
 at third location turn right and go to end of rd.

Database File: xtoac1906.db  
Dataset Pathname: pass2.1  
Presentation Format: dil  
Dataset Creation: Wed Aug 30 20:51:04 2006 by Calc Warrior 7.0 STD Ope  
Charted by: Depth in Feet scaled 1:240

0	GR (GAPI)	200
-200	SP (mV)	0

0.2	RILD (Ohm-m)	2000
0.2	RILM (Ohm-m)	2000
0.2	RLL3 (Ohm-m)	2000





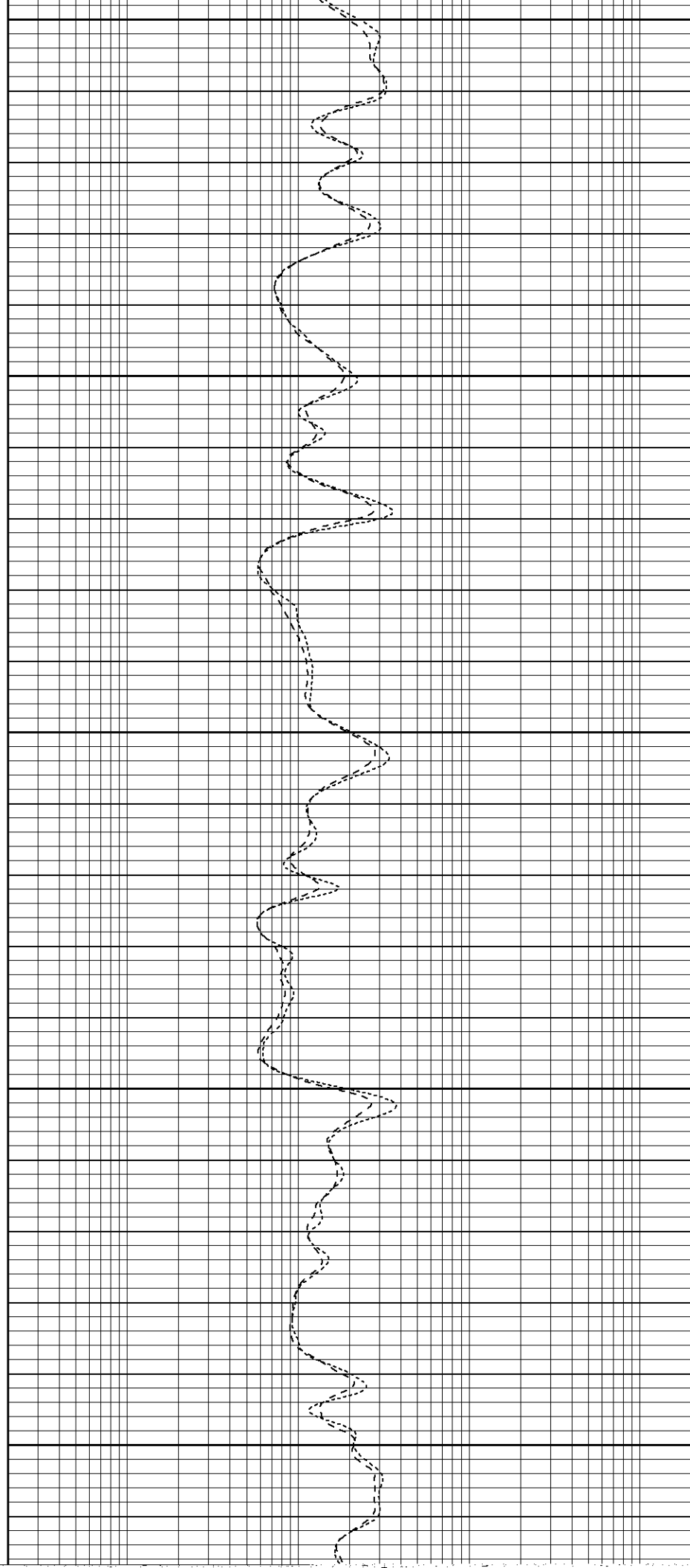
800

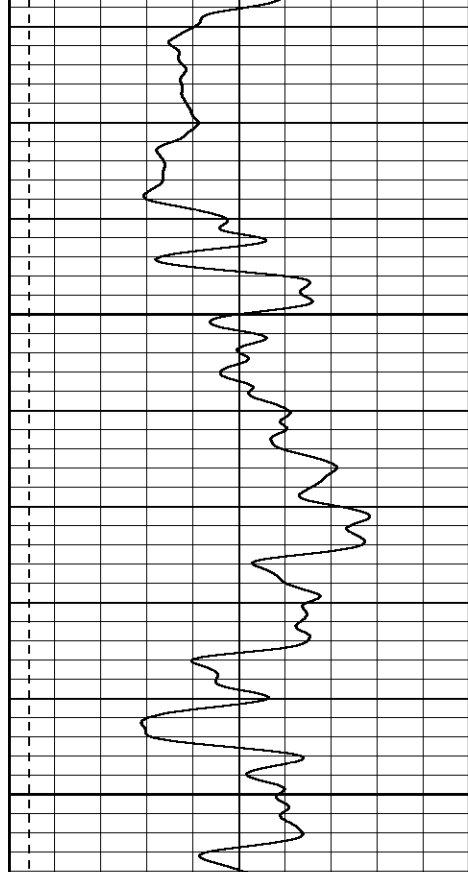
850

900

950

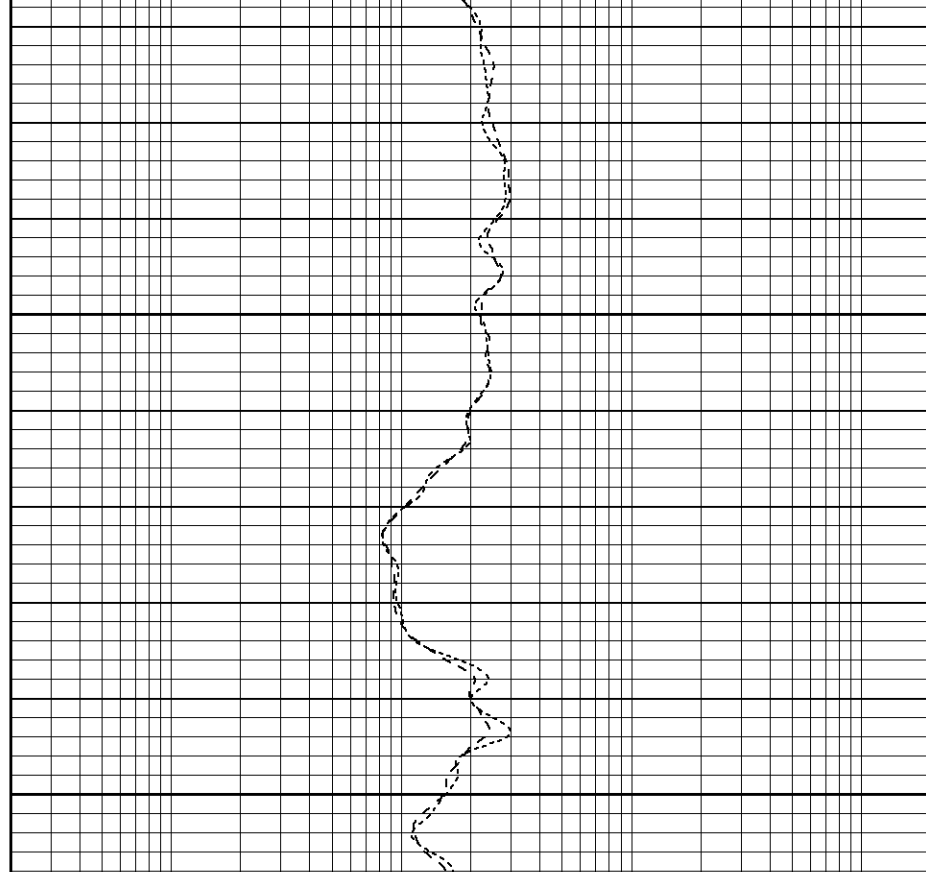
1000

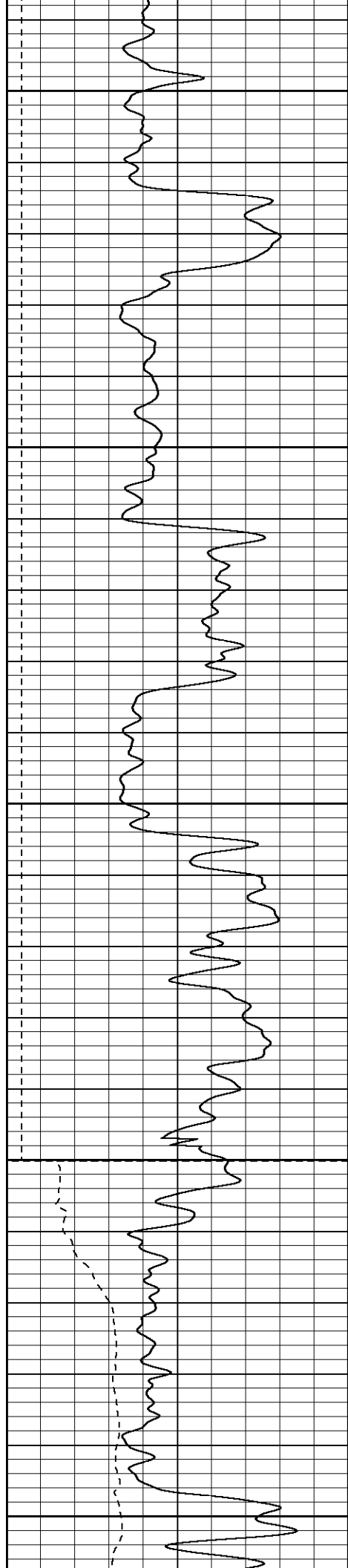




1050

1100





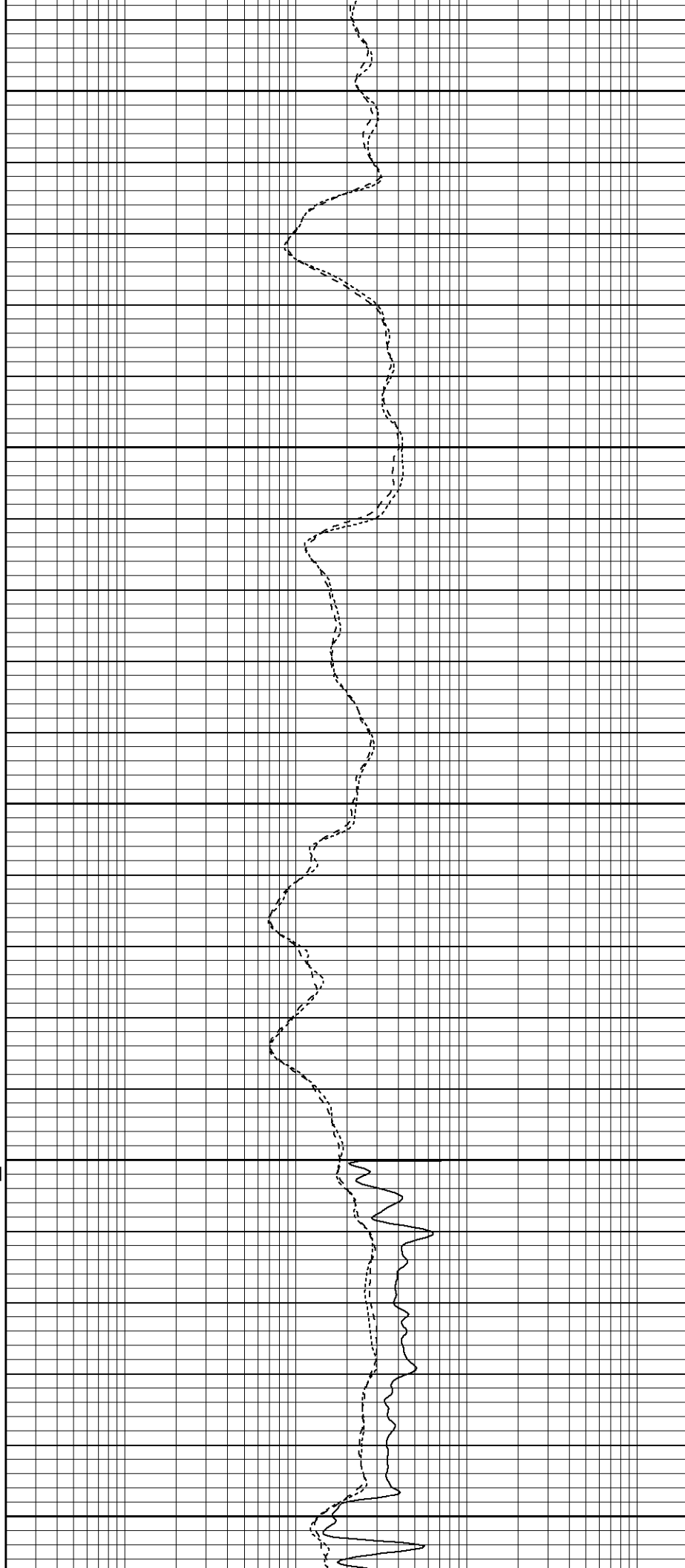
1250

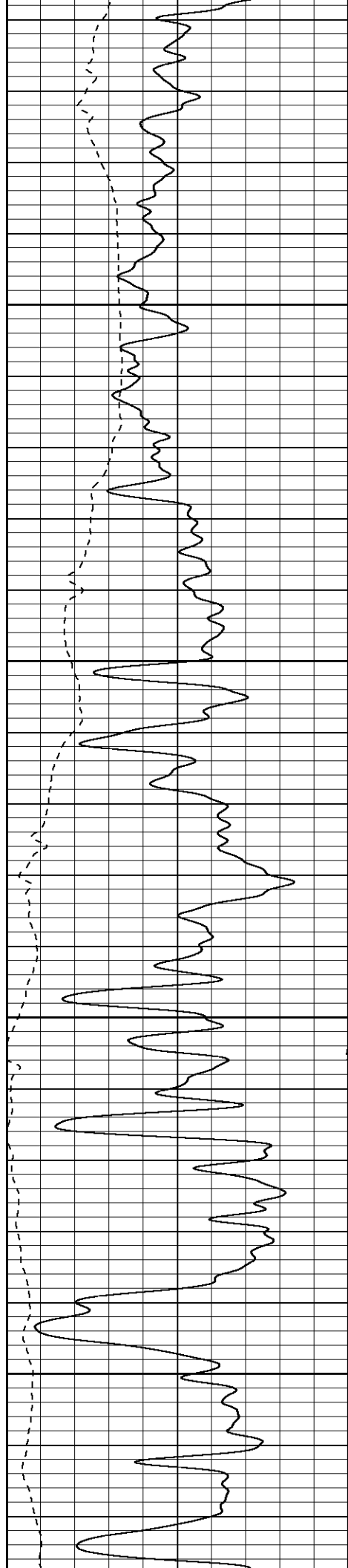
1300

1350

1400  
Fluid Level

1450



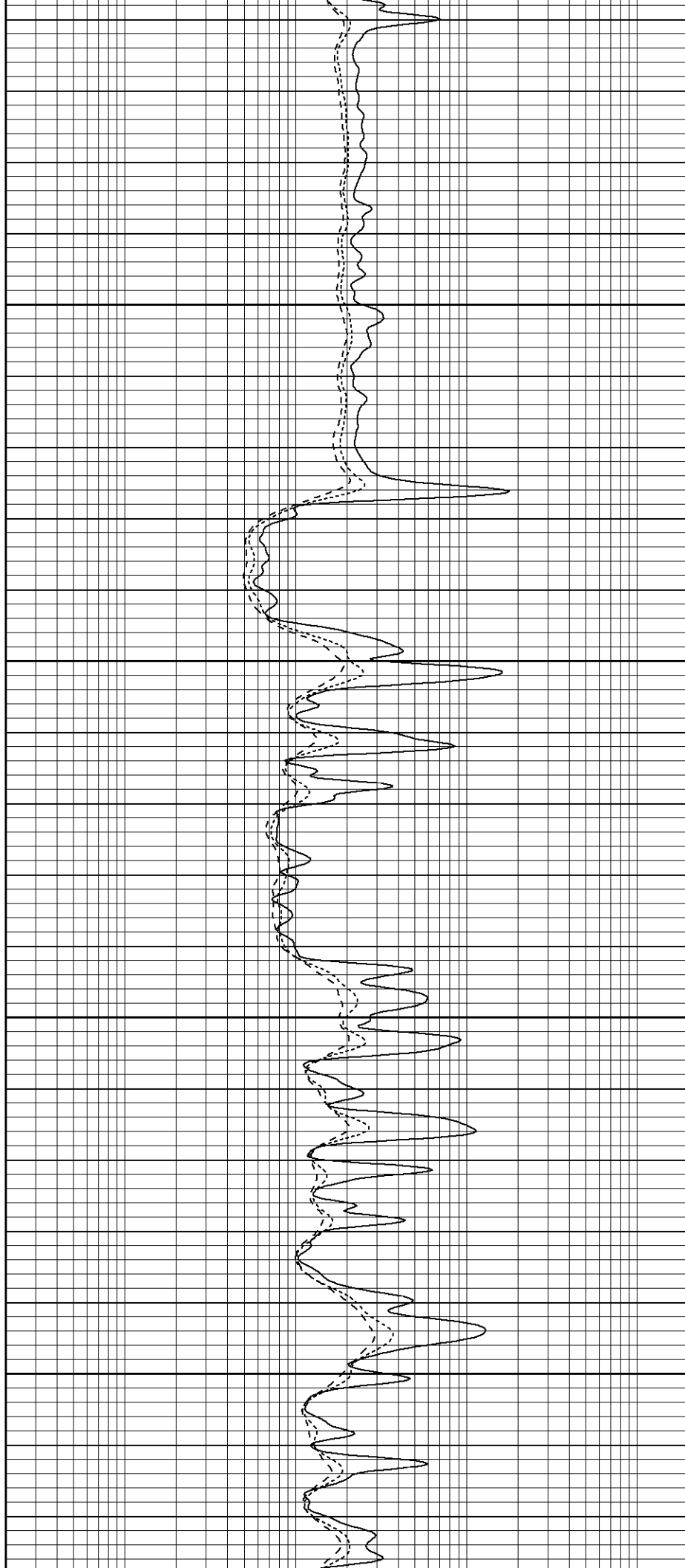


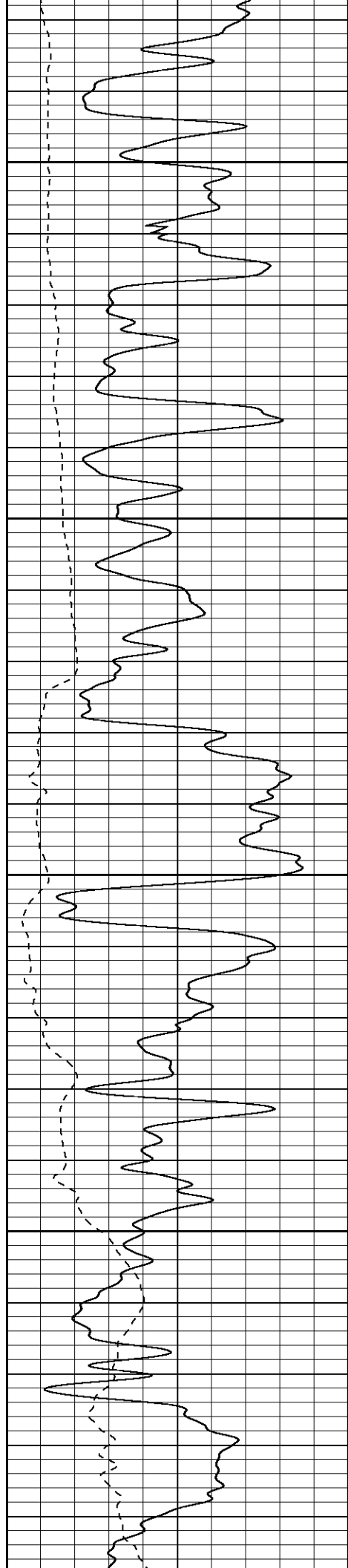
1500

1550

1600

1650



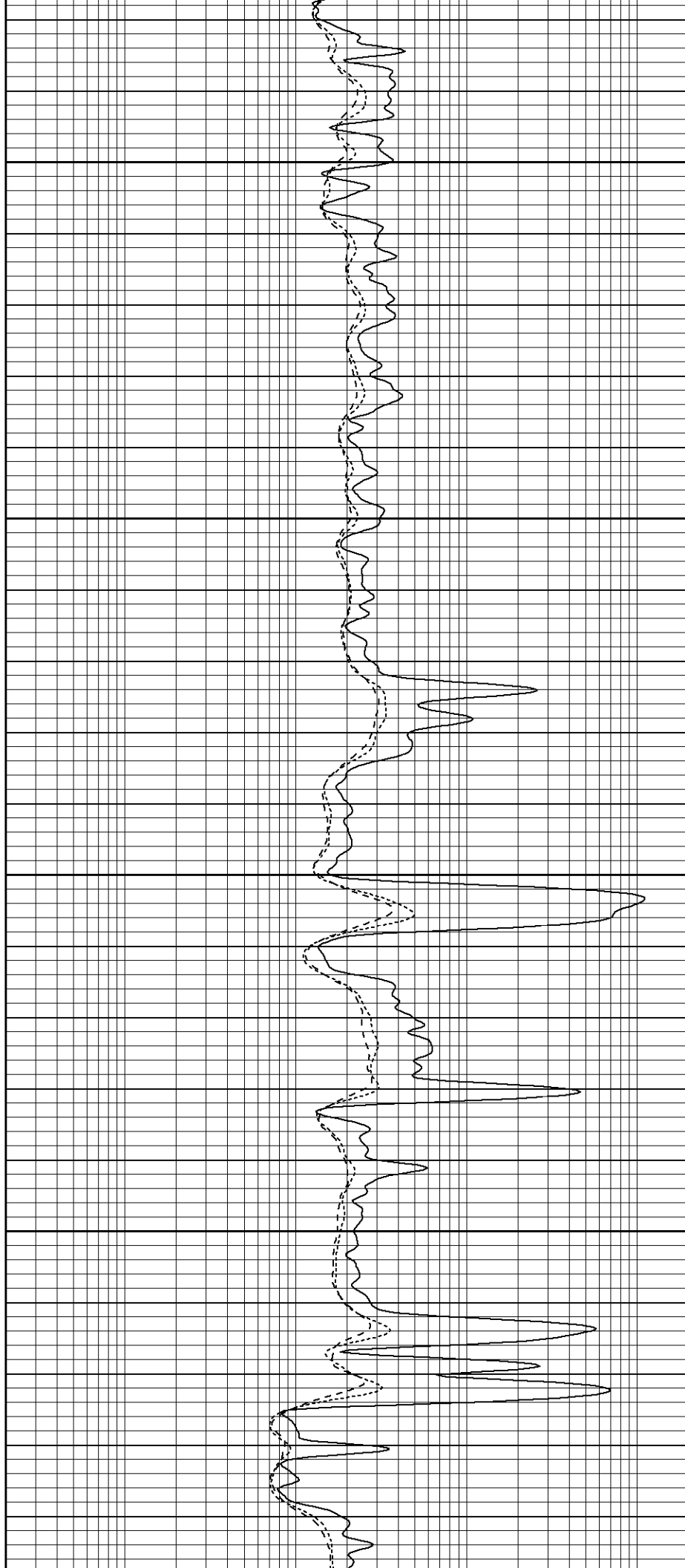


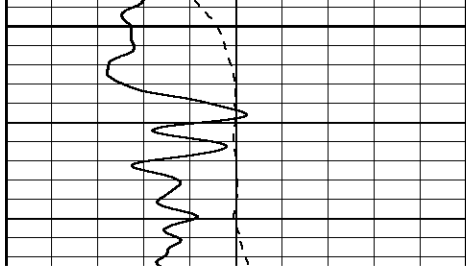
1700

1750

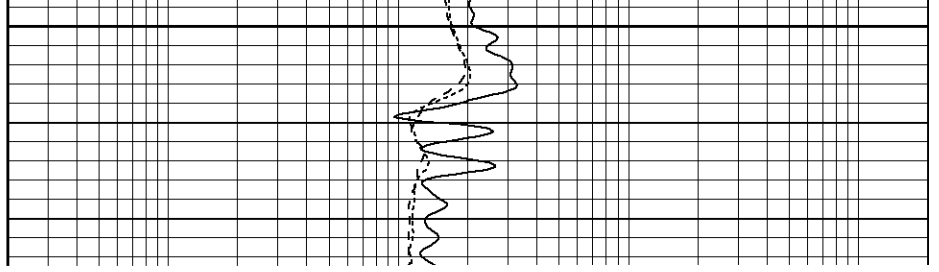
1800

1850

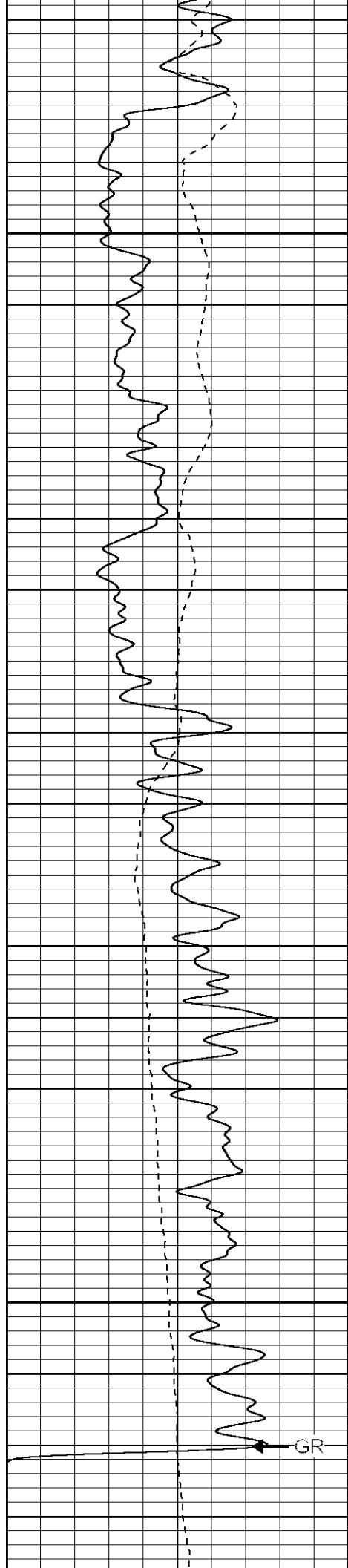




1900







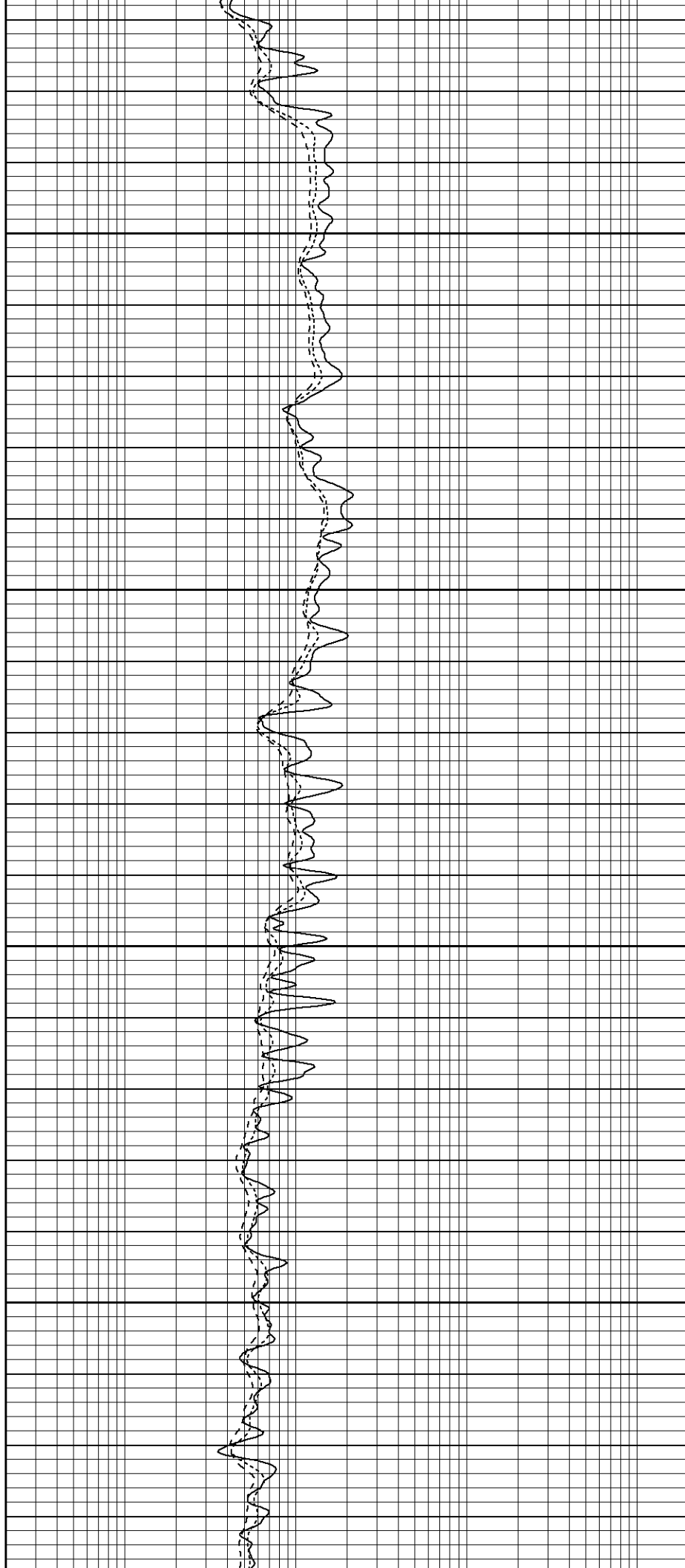
2150

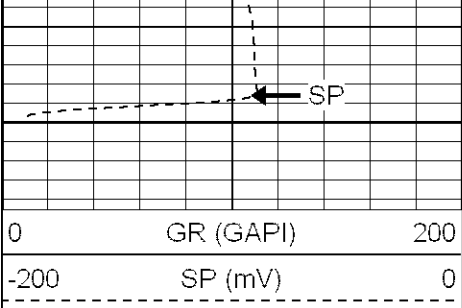
2200

2250

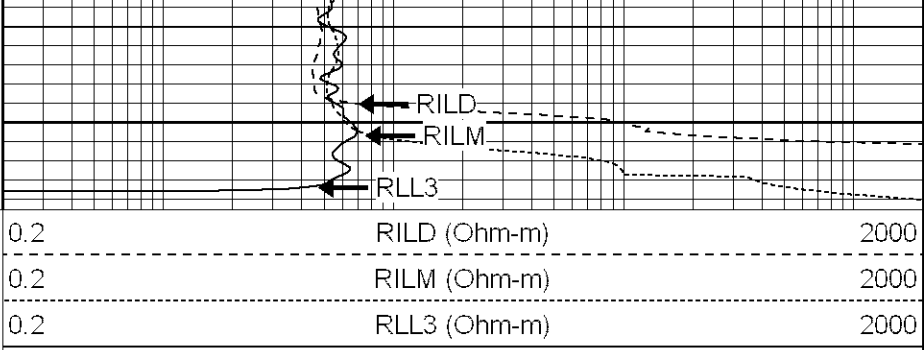
2300

GR





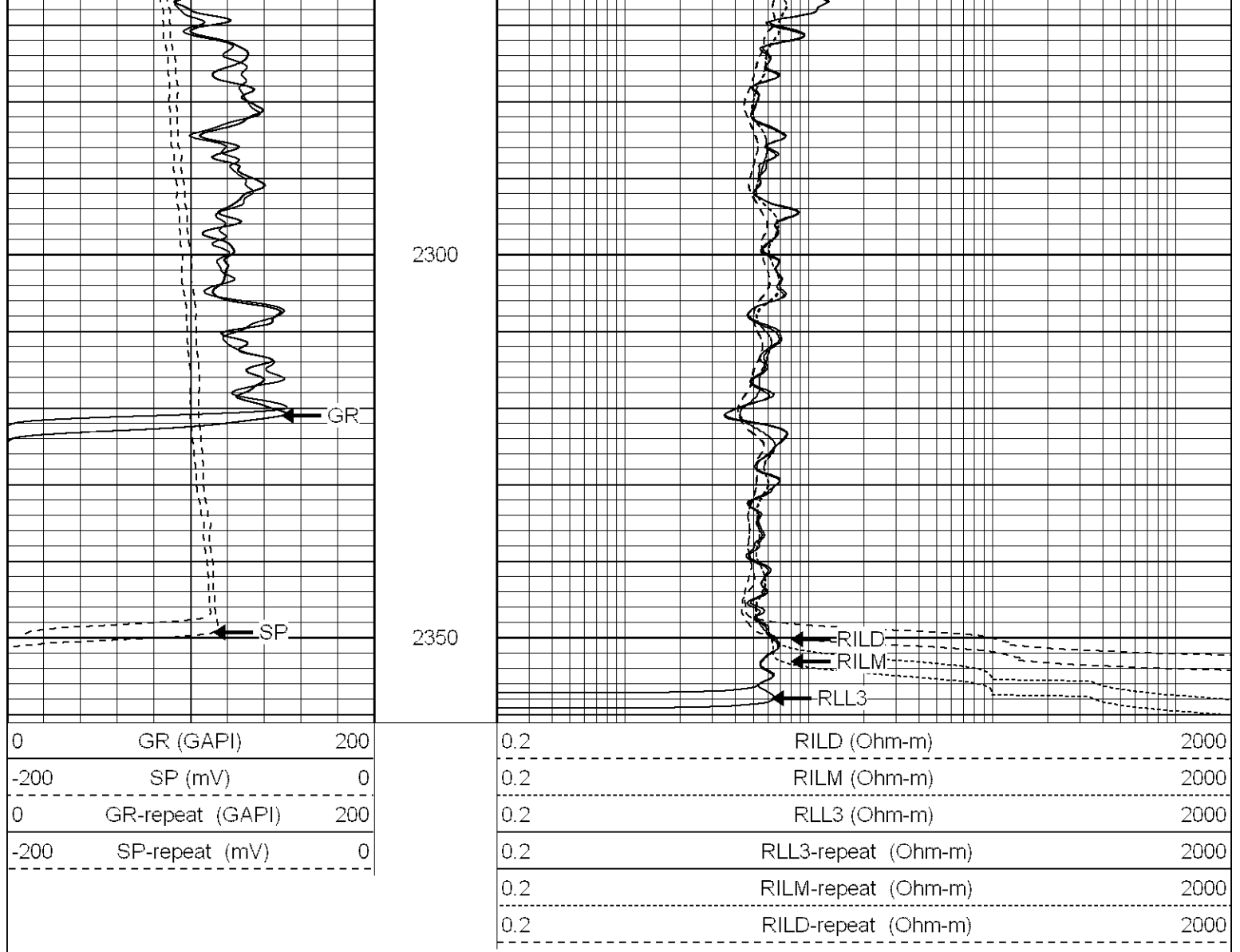
2350



**Patterson**

**Repeat Pass**

Database File: xtoac1906.db



### Dual Induction Calibration Report

Serial-Model: 5375-G  
 Surface Cal Performed: Tue Aug 29 14:36:44 2006  
 Downhole Cal Performed: Wed Aug 30 16:26:38 2006

#### Surface Calibration

Loop:	Readings			References			Results	
	Air	Loop		Air	Loop		m	b
Deep	0.007	0.625	V	0.000	500.000	mmho-m	808.360	-5.486
Medium	0.011	0.749	V	0.000	550.000	mmho-m	744.980	-7.825
Internal:	Zero	Cal		Zero	Cal		m	b
Deep	0.007	0.625	V	0.000	500.000	mmho-m	808.488	-5.660
Medium	0.010	0.748	V	0.000	550.000	mmho-m	744.937	-7.570

#### Downhole Calibration

Internal:	Readings			References			Results	
	Zero	Cal		Zero	Cal		m	b
Deep	0.217	498.880	mmho-m	0.173	500.094	mmho-m	1.003	0.045



Tool Joint	Length (ft)	Weight (lb)	OD (in)	Tool Joint	Length (ft)	Weight (lb)	OD (in)
LSD	24.47			CDL-2.75POH (902)	8.43	2.75	106.00
DCAL	24.19			Probe			
SSD	23.95						
10pin	21.72			Probe	0.89	3.50	20.00
CILD	10.60			DIL-G (5375)	20.83	4.00	345.00
SP	10.60			Gearhart			
CILM	6.89						
RLL3	1.70						
Dataset: /field/well/run1/_plots/_jobs/_dil Total Length: 39.37 ft Total Weight: 577.00 lb O.D. 4.00 in							