



**BOREHOLE
COMPENSATED
SONIC W/ITT LOG**

Company Bayhorse Petroleum, L.L.C.		Company Bayhorse Petroleum, L.L.C.	
Well Cornelsen #1-32		Well Cornelsen #1-32	
Field Sentinel		Field Sentinel	
County Kiowa		County Kiowa	
State Colorado		State Colorado	
Location: 660' FWL & 660' FNL NW NW		API #: 061-06809-00 Other Services CNL / SSD MEL / DIL	
SEC 32 TWP 20S RGE 45W		Elevation	
Permanent Datum Ground Level Elevation 3714 FT		K.B. 3725 FT.	
Log Measured From K.B., 11 Ft. Above Perm Datum		D.F.	
Drilling Measured From Kelly Bushing		G.L. 3714 FT.	
Date	Nov. 12, 2007		
Run Number	Two		
Depth Driller	5080 FT.		
Depth Logger	5080 FT.		
Bottom Logged Interval	5079 FT.		
Top Log Interval	Surface Casing		
Casing Driller	8 5/8" @ 493 FT.		
Casing Logger	490 FT.		
Bit Size	7 7/8"		
Type Fluid in Hole	Chemical		
Density / Viscosity	9.2 / 47 sec.		
pH / Fluid Loss	10.0 / 7.2 cc.		
Source of Sample	Flowline		
Rm @ Meas. Temp	1.41 @ 75°F		
Rmt @ Meas. Temp	1.06 @ 75°F		
Rmc @ Meas. Temp	1.76 @ 75°F		
Source of Rmt / Rmc	Calc. / Calc.		
Rm @ BHT	0.76 @ 122°F		
Time Circulation Stopped	9:30 PM		
Time Logger on Bottom	2:00 AM		
Maximum Recorded Temperature	122°F		
Equipment Number	9842		
Location	Liberal, KS.		
Recorded By	Barnhart		
Witnessed By	Mr. R. Vaughn		

<<< Fold Here >>>

All interpretations are opinions based on inferences from electrical or other measurements and we cannot and do not guarantee the accuracy or correctness of any interpretation, and we shall not, except in the case of gross or willful negligence on our part, be liable or responsible for any loss, costs, damages, or expenses incurred or sustained by anyone resulting from any interpretation made by any of our officers, agents or employees. These interpretations are also subject to our general terms and conditions set out in our current Price Schedule.

Comments

Thanks for using IPS Company.....
(800) 279-4941...

Today's crew: Robert Barnhart, Oscar Gines

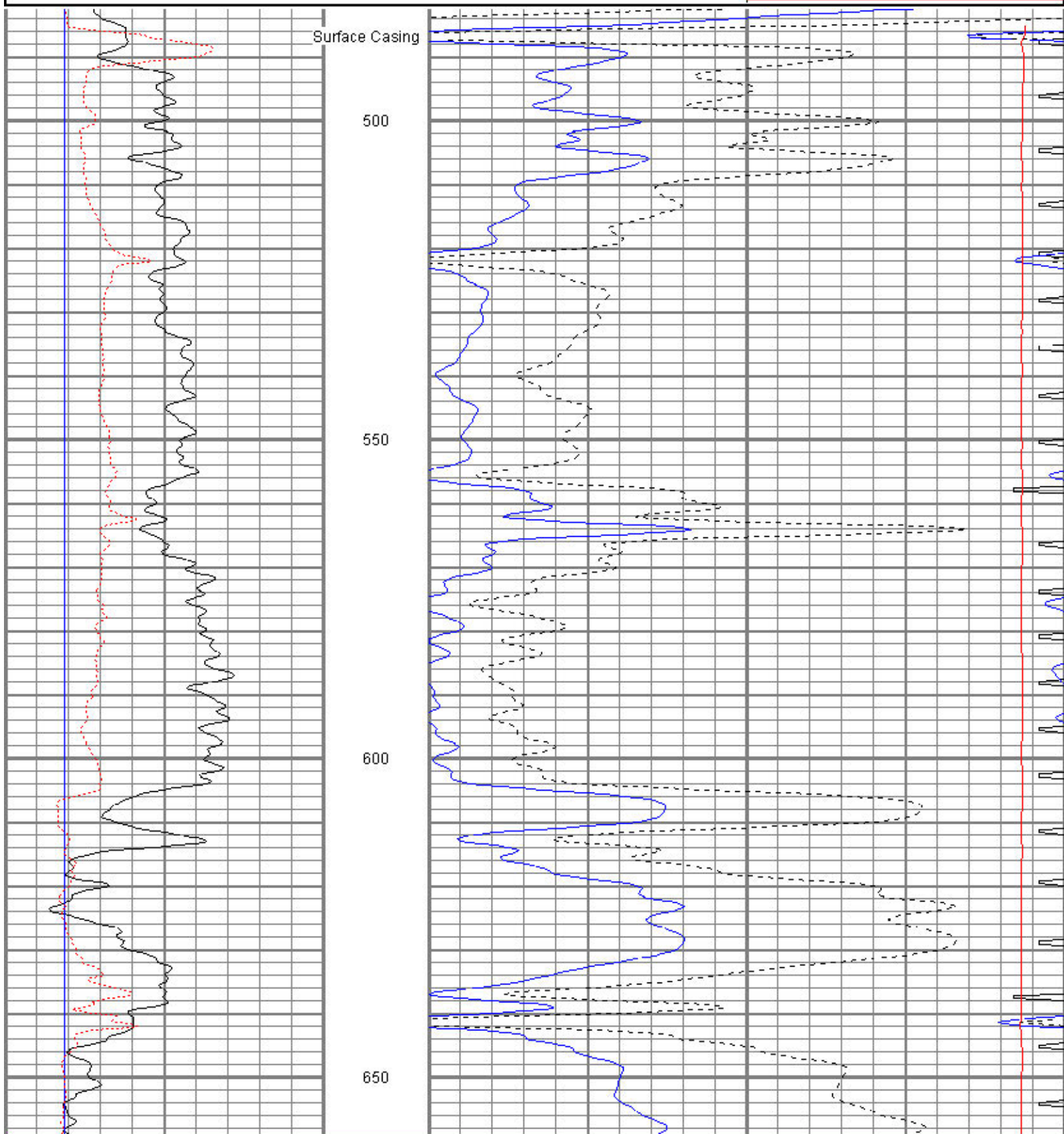
Chlorides @: 1,100 ppm
LCM @: 7 lbs/bbl

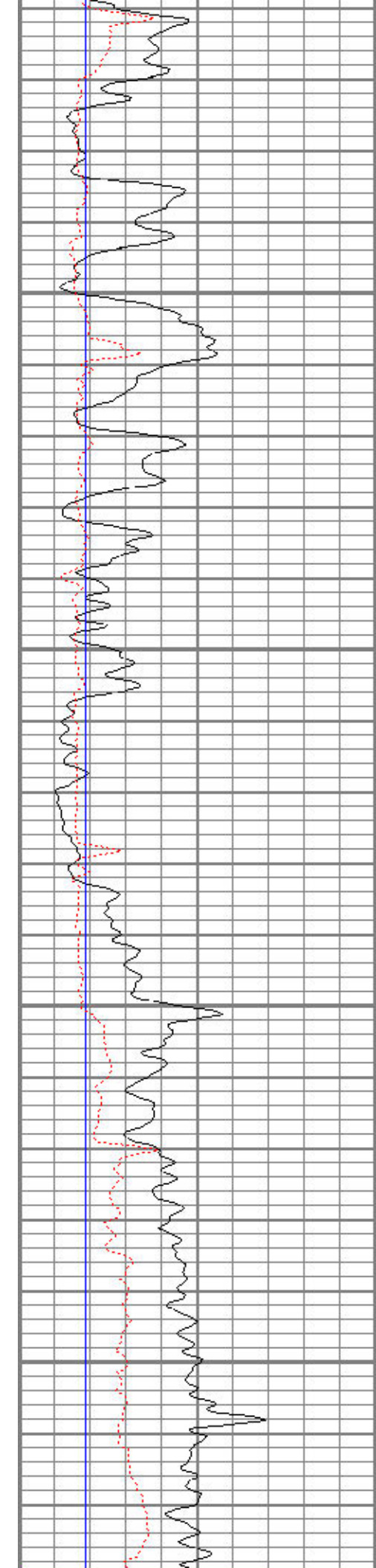


MAIN PASS

Database File: cornelsen 1-32.db
 Dataset Pathname: bcs/pass4
 Presentation Format: _slt-gr
 Dataset Creation: Mon Nov 12 05:53:48 2007 by Log Open-Cased 061129
 Charted by: Depth in Feet scaled 1:240

0	Gamma Ray (GAPI)	150	30	SPOR (pu)	-10
6	BOREID (in)	16	25	ITT (msec)	0
6	MCAL (in)	16	140	DT (usec/ft)	40
			10000	LTEN (lb)	0



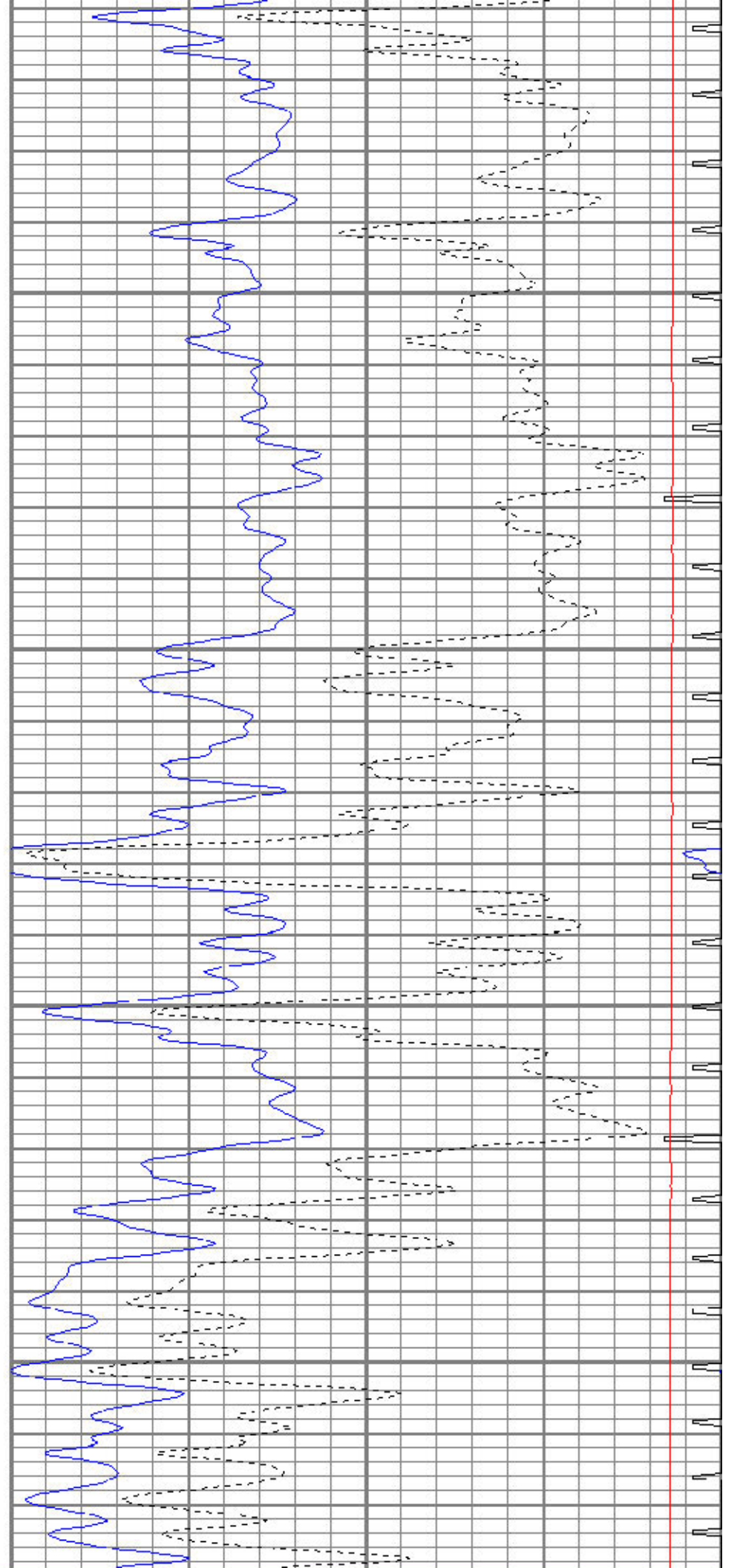


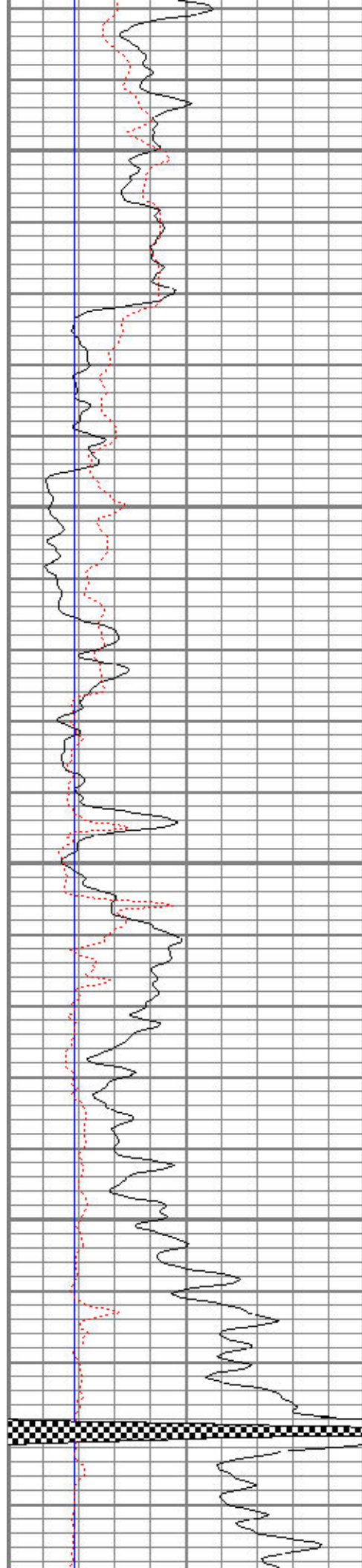
700

750

800

850



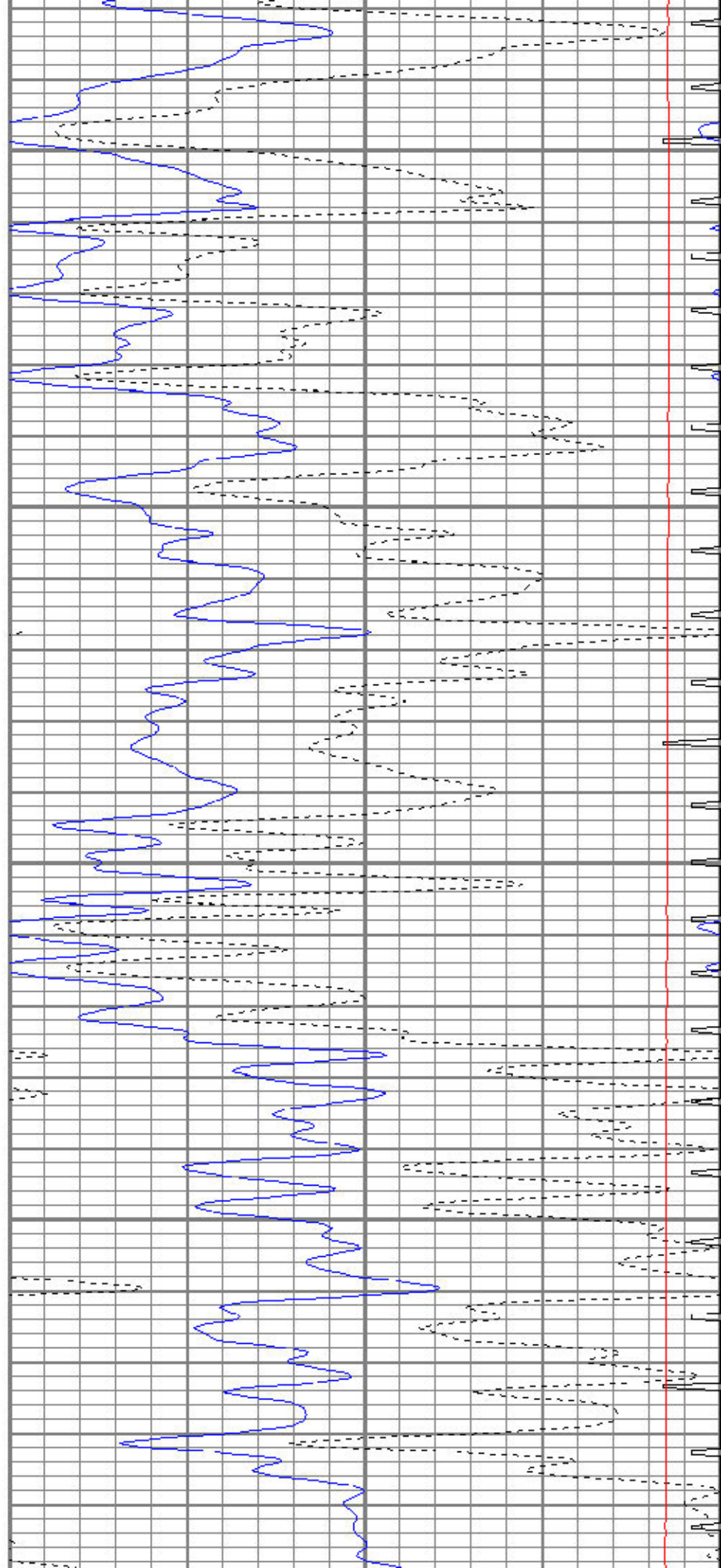


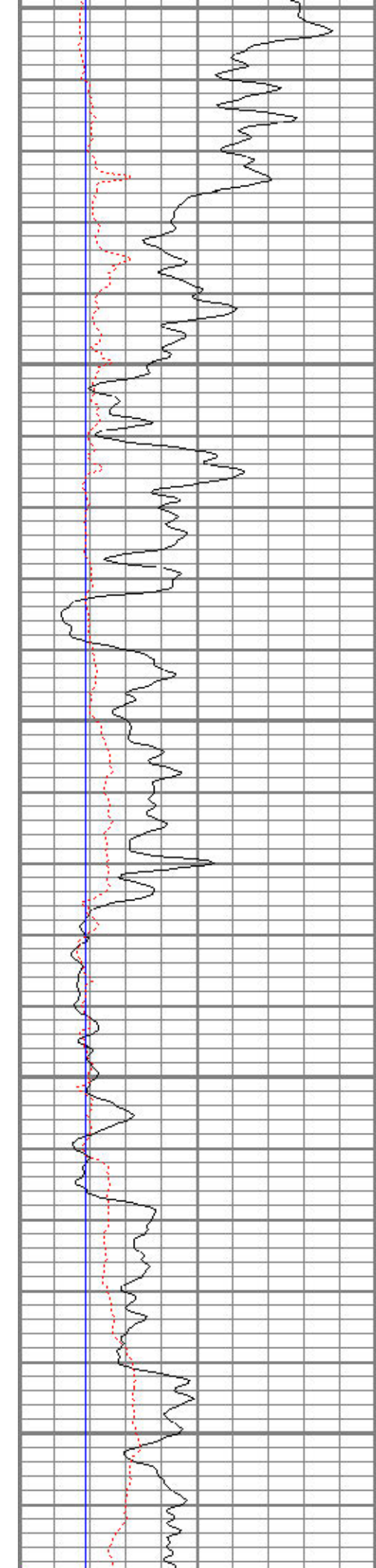
900

950

1000

1050





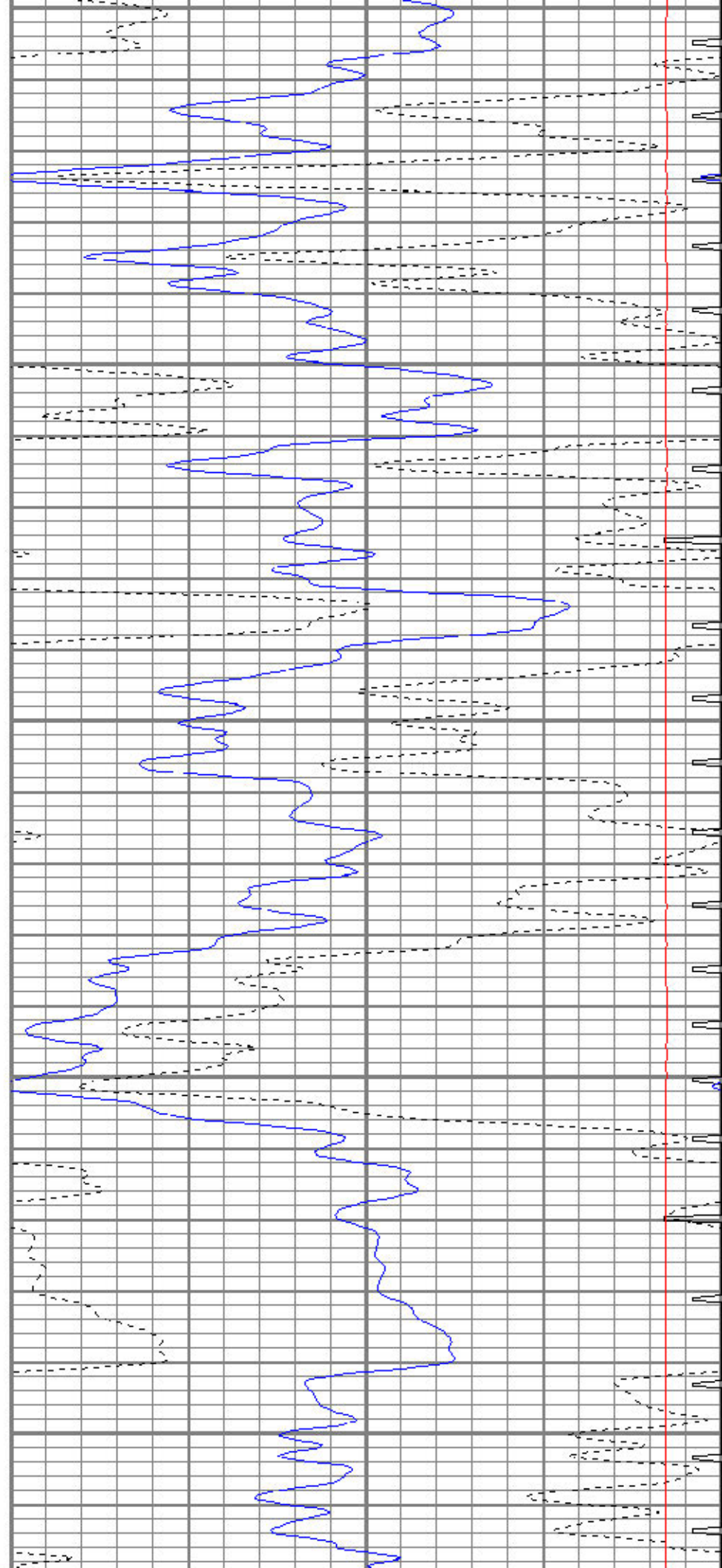
1100

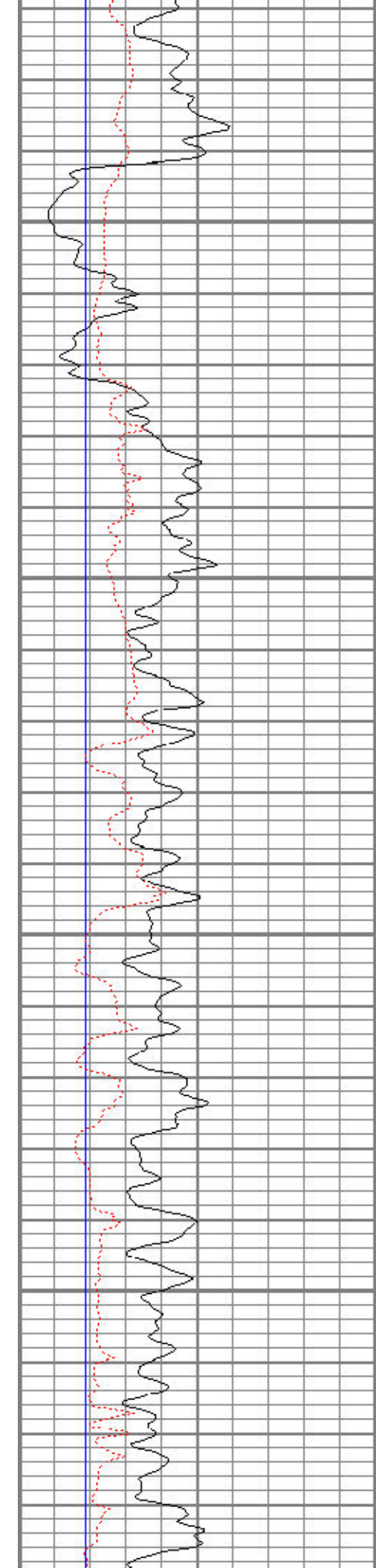
1150

1200

1250

1300



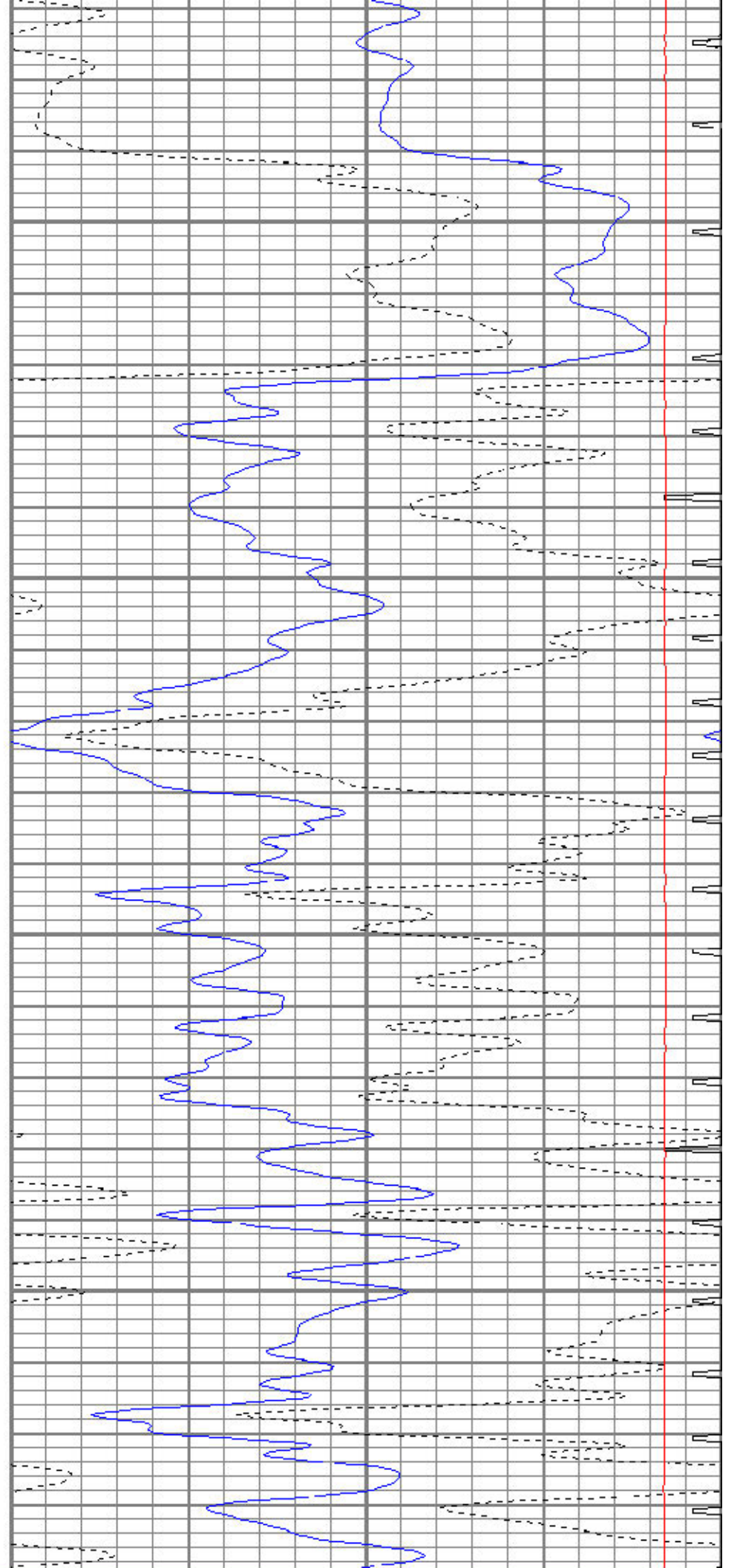


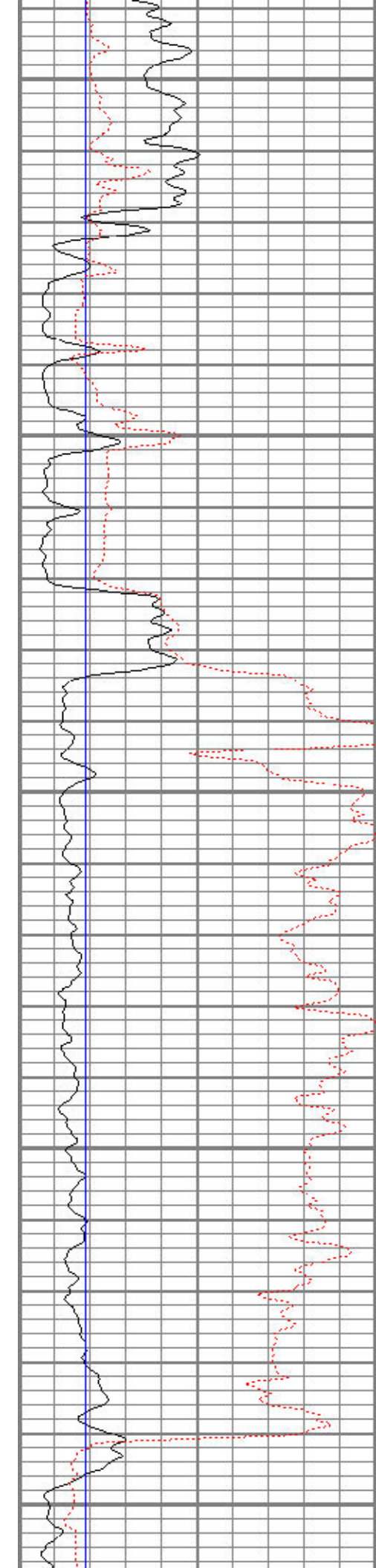
1350

1400

1450

1500





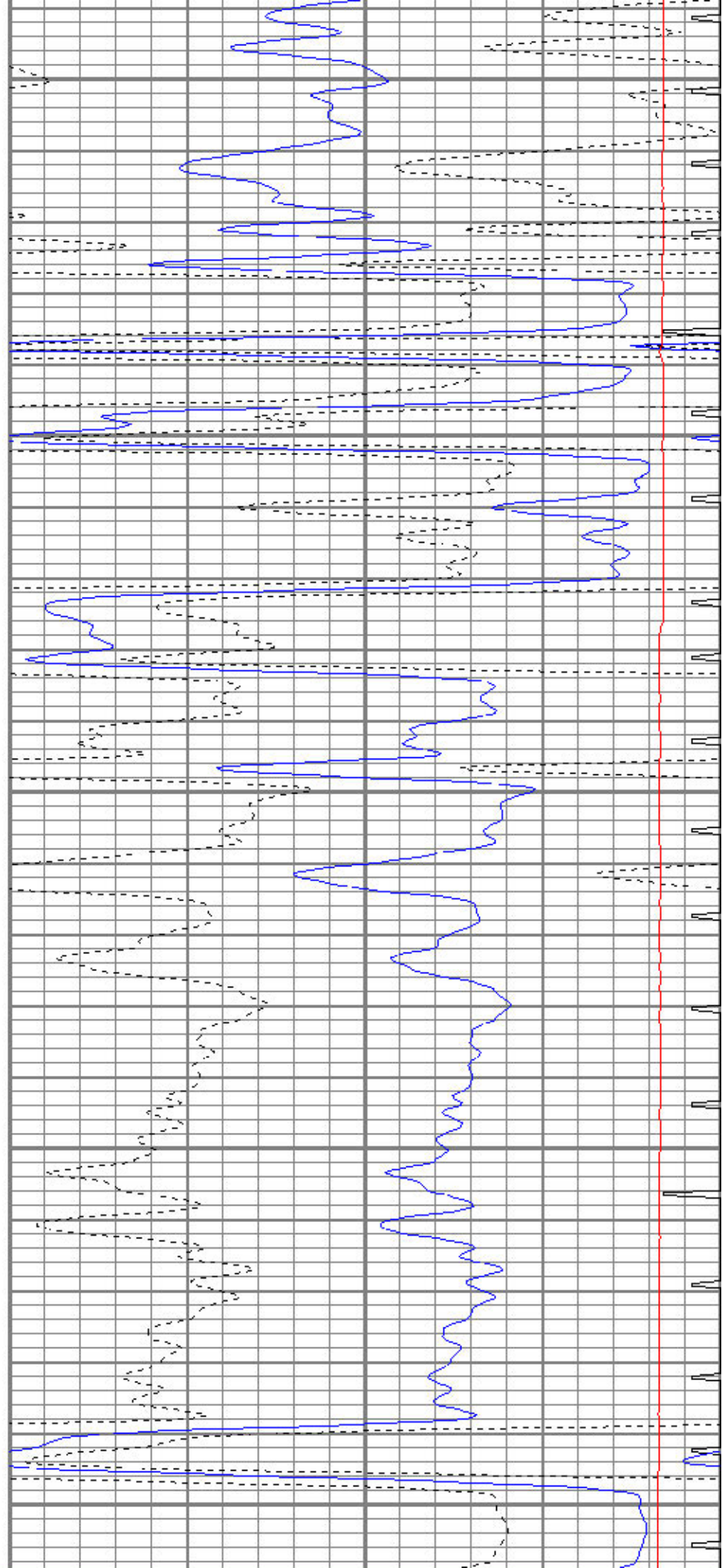
1550

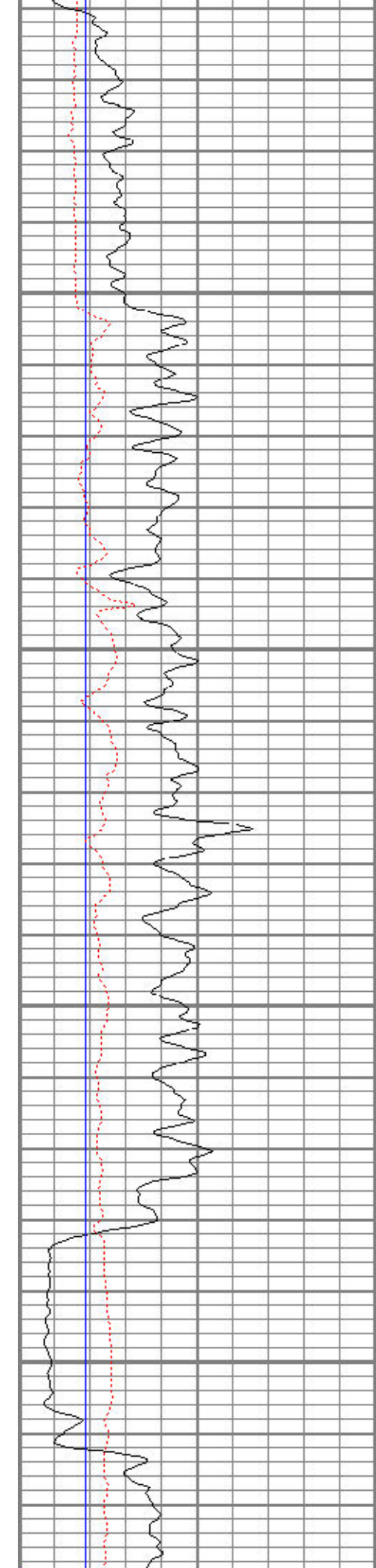
1600

1650

1700

1750



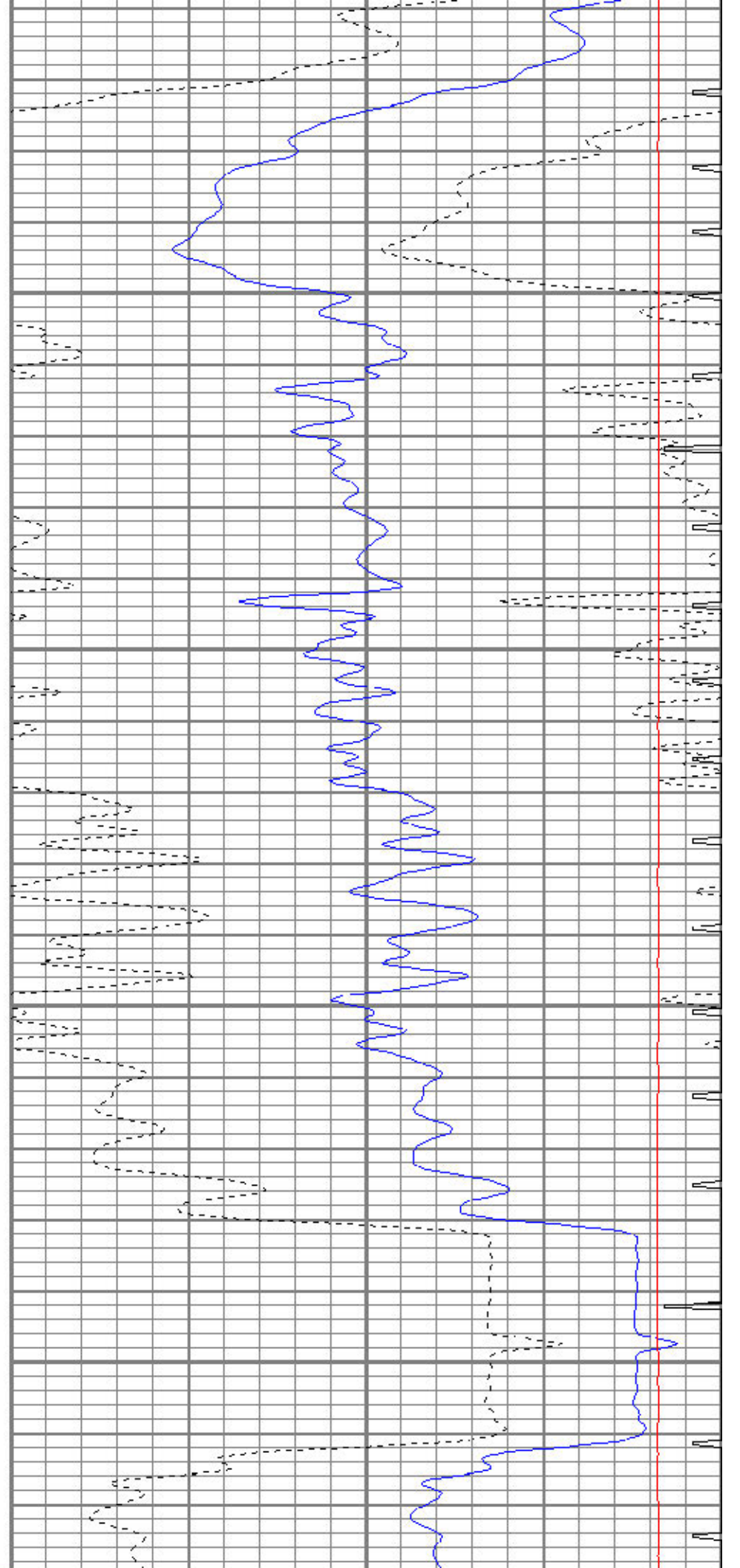


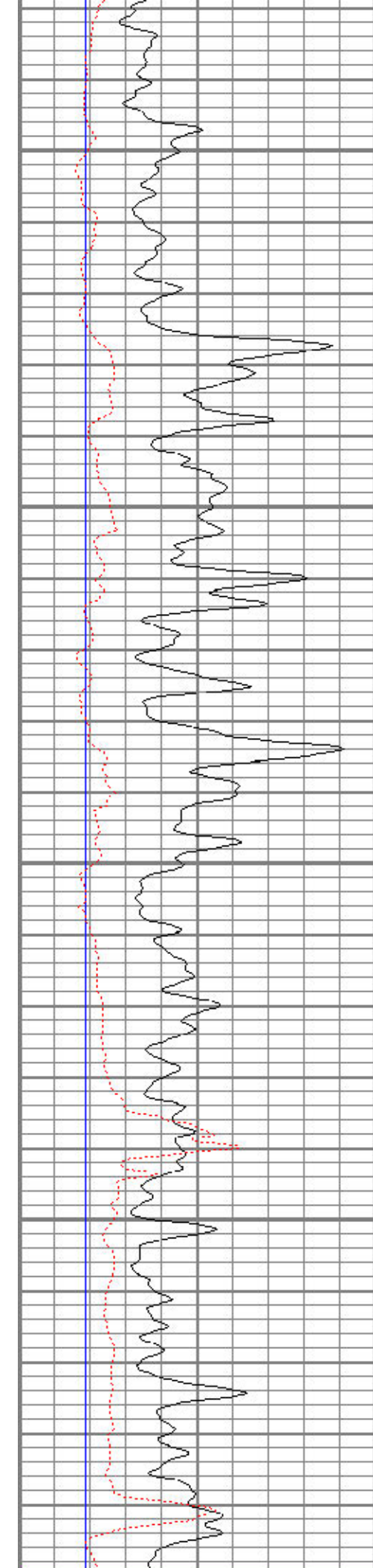
1800

1850

1900

1950



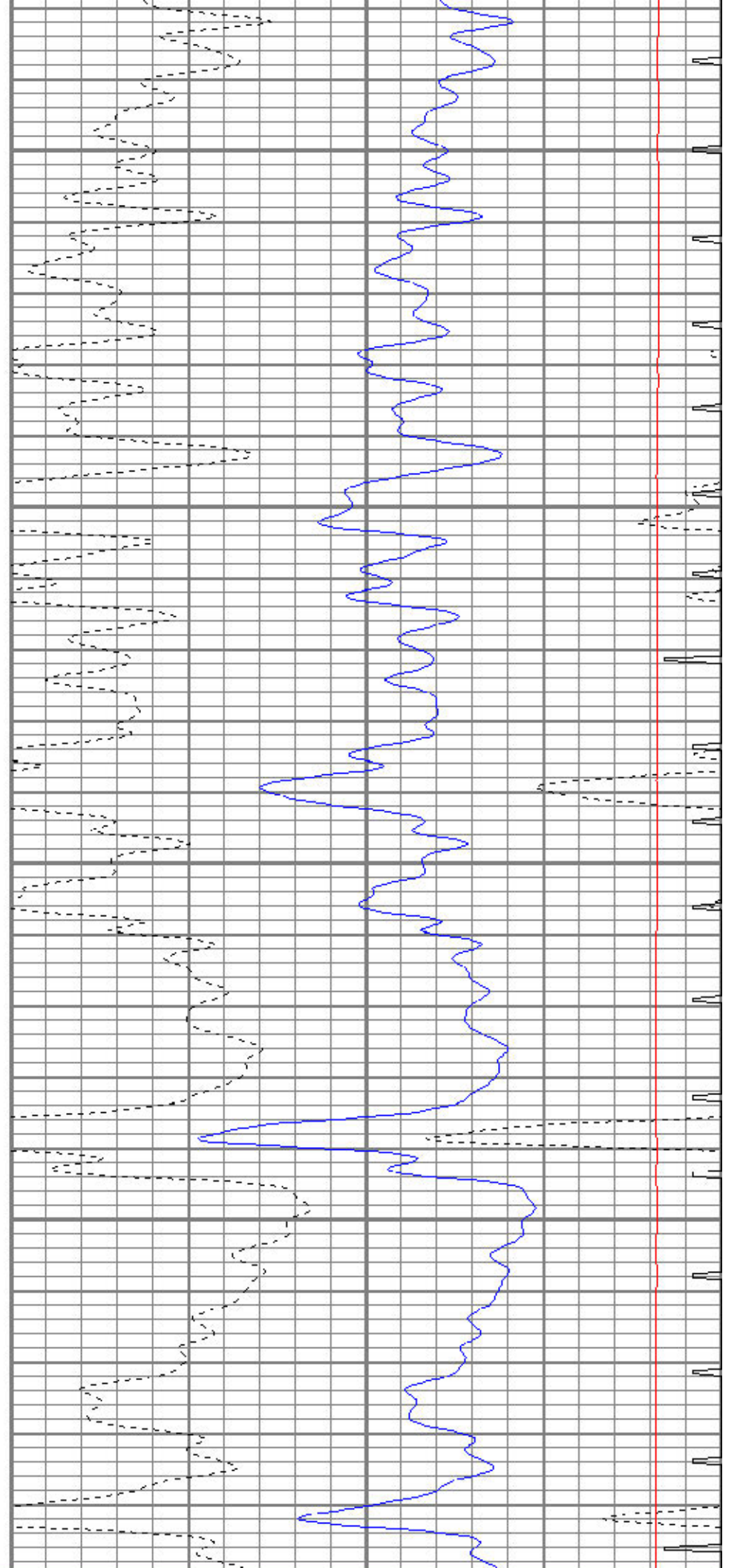


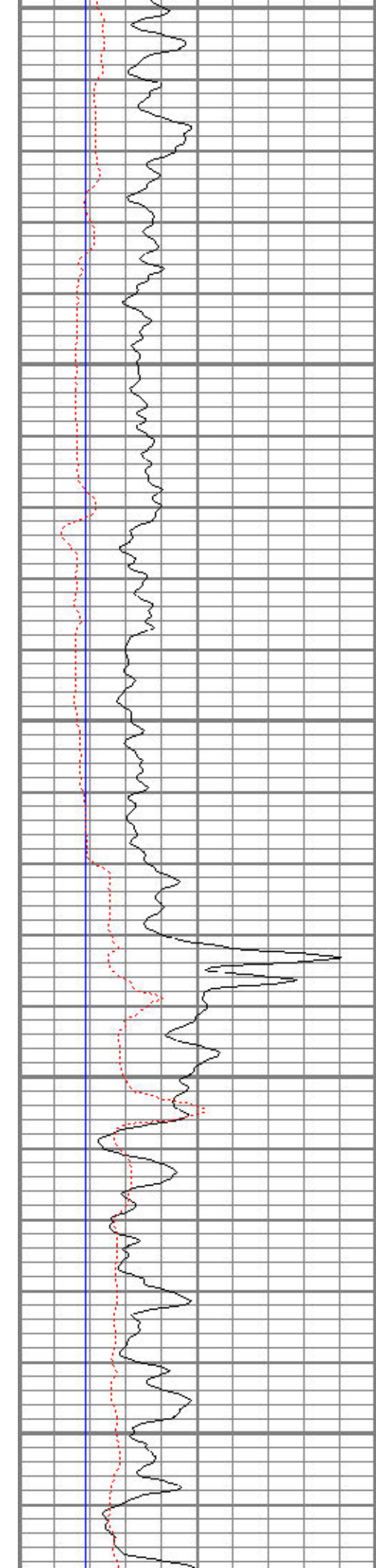
2000

2050

2100

2150





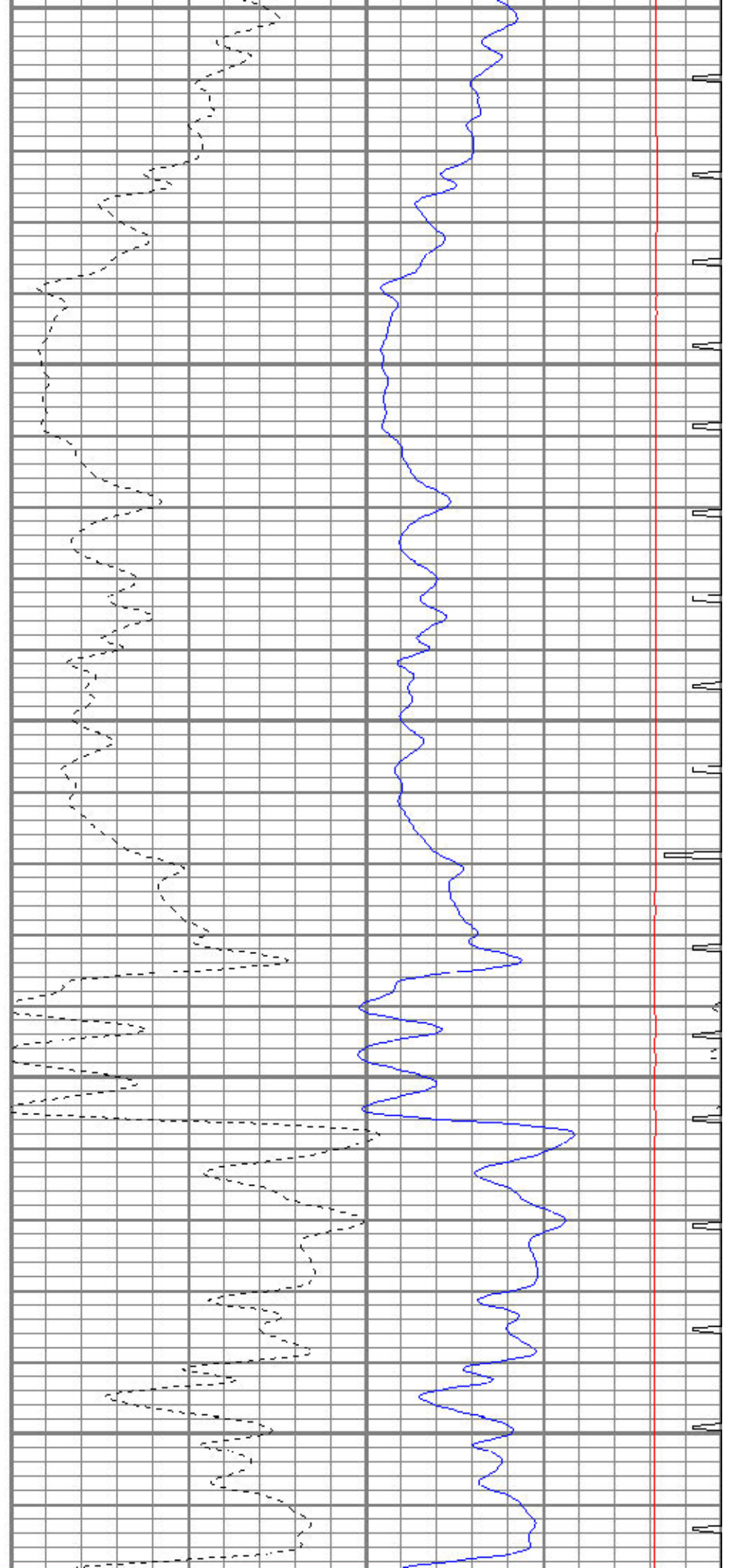
2200

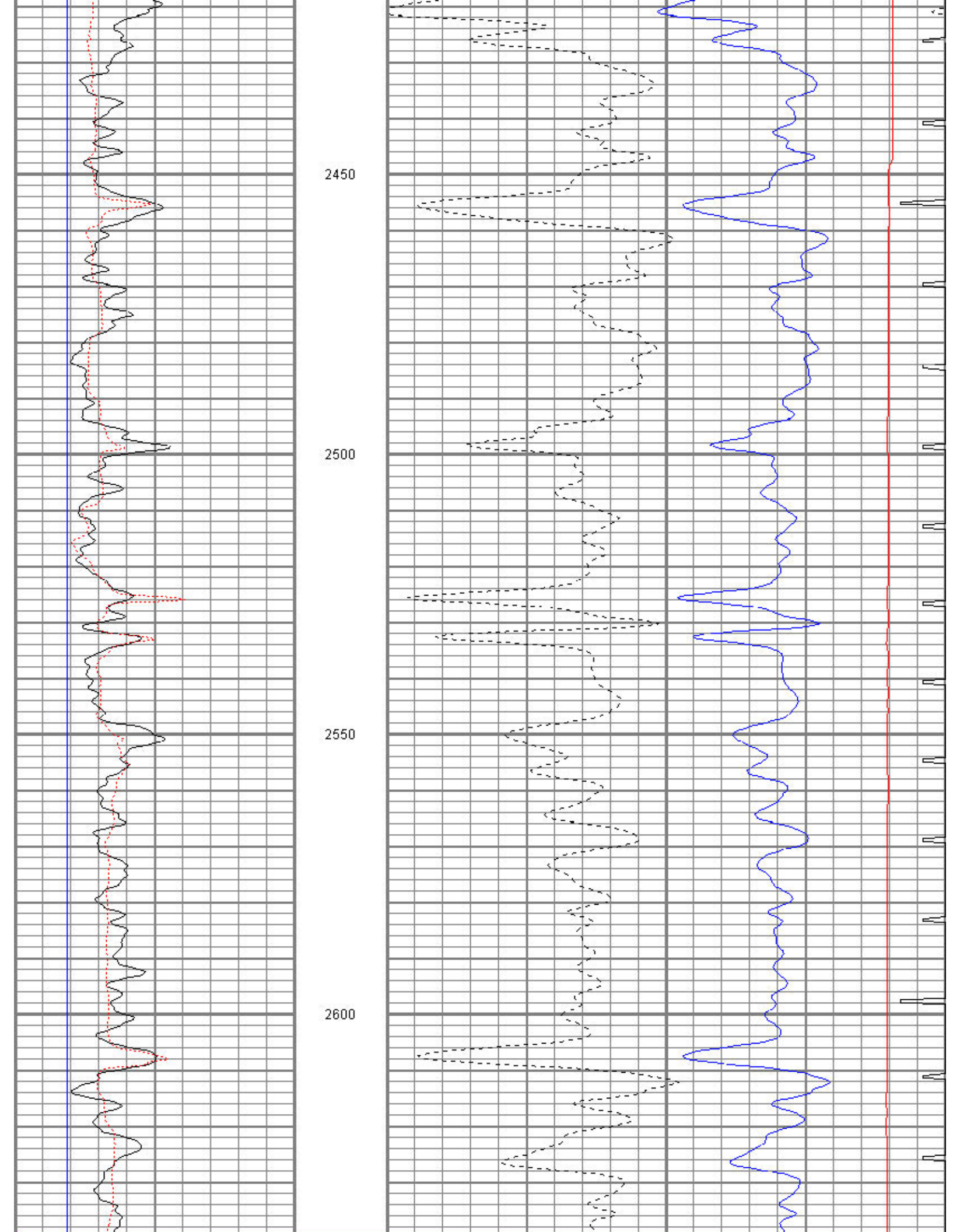
2250

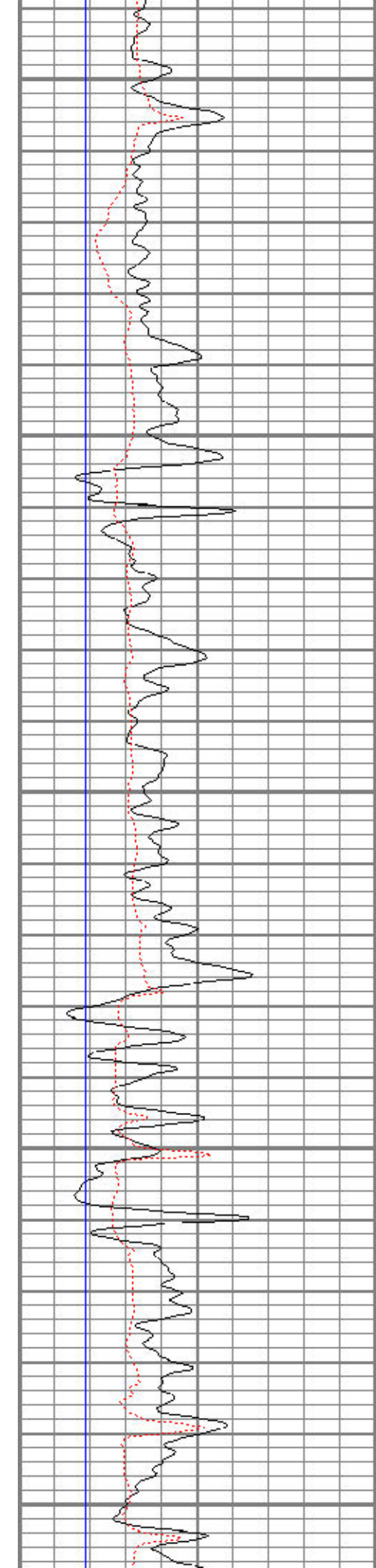
2300

2350

2400







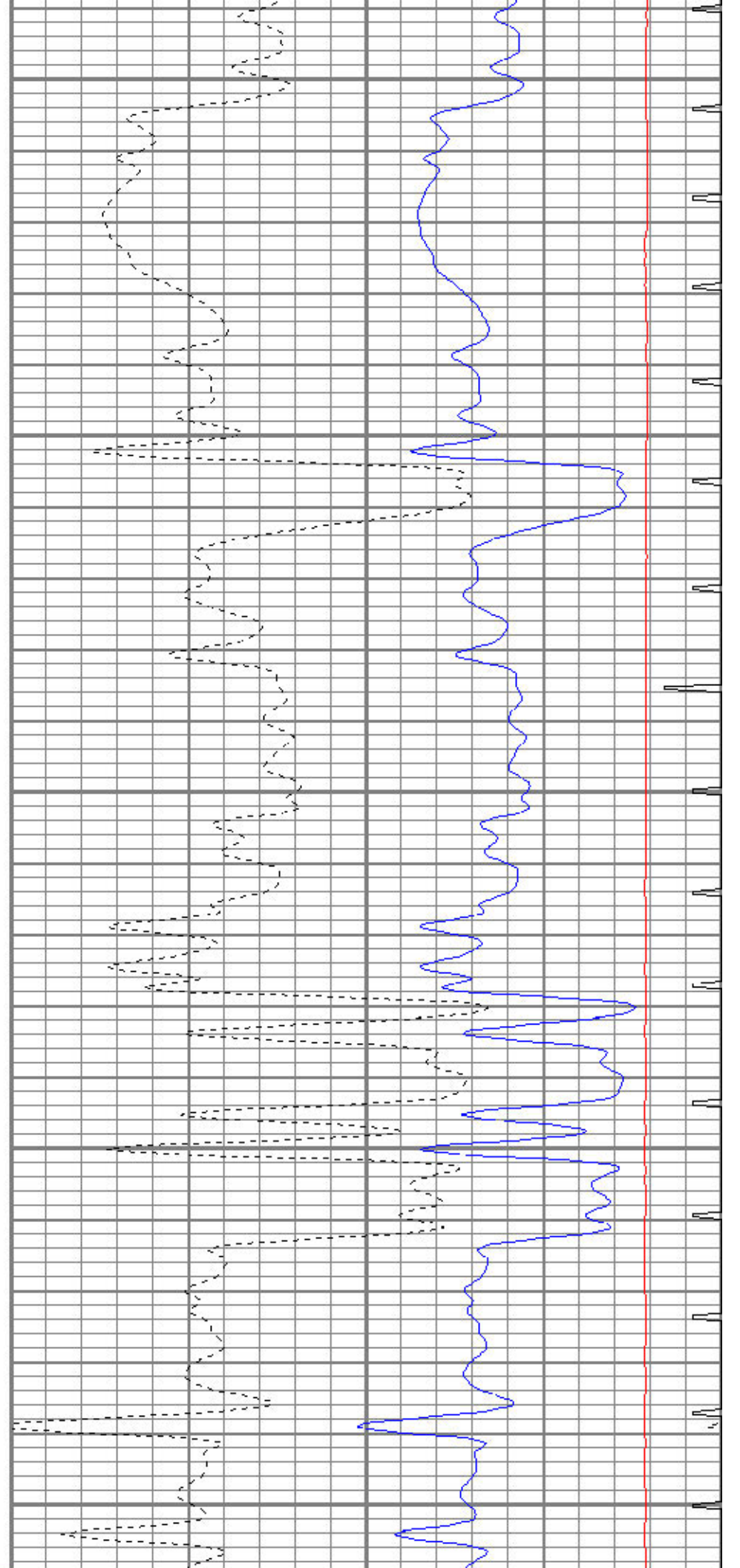
2650

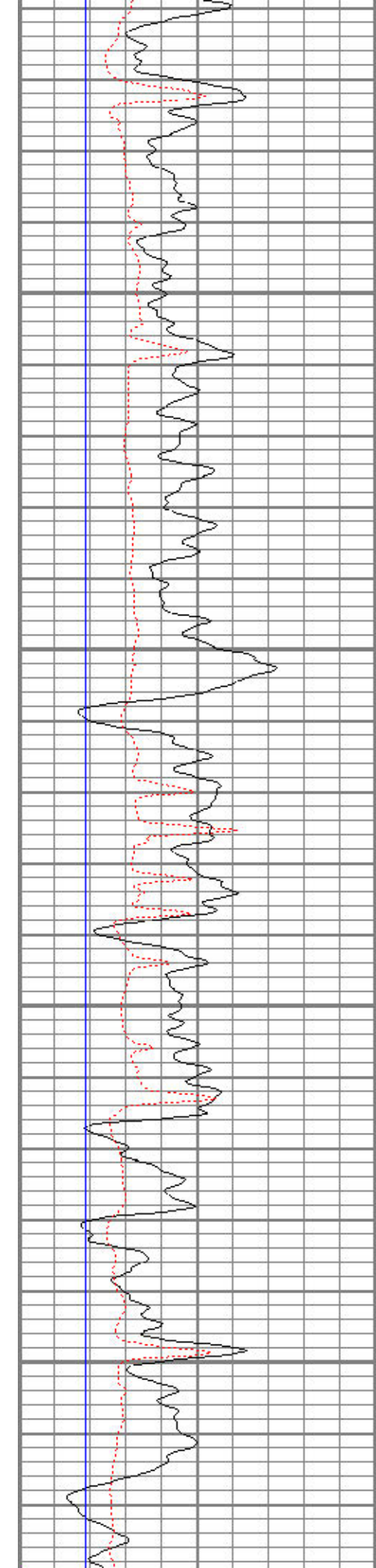
2700

2750

2800

2850



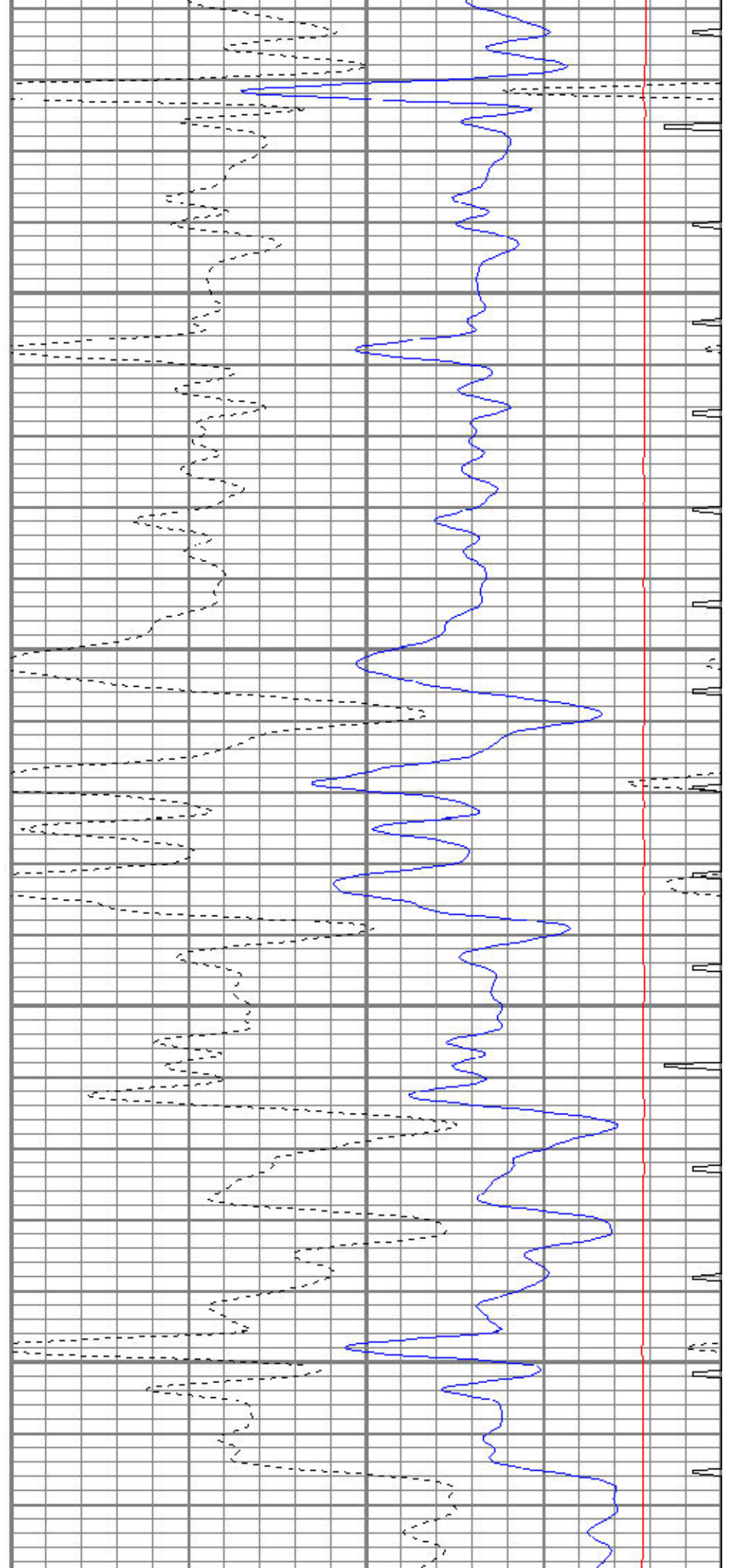


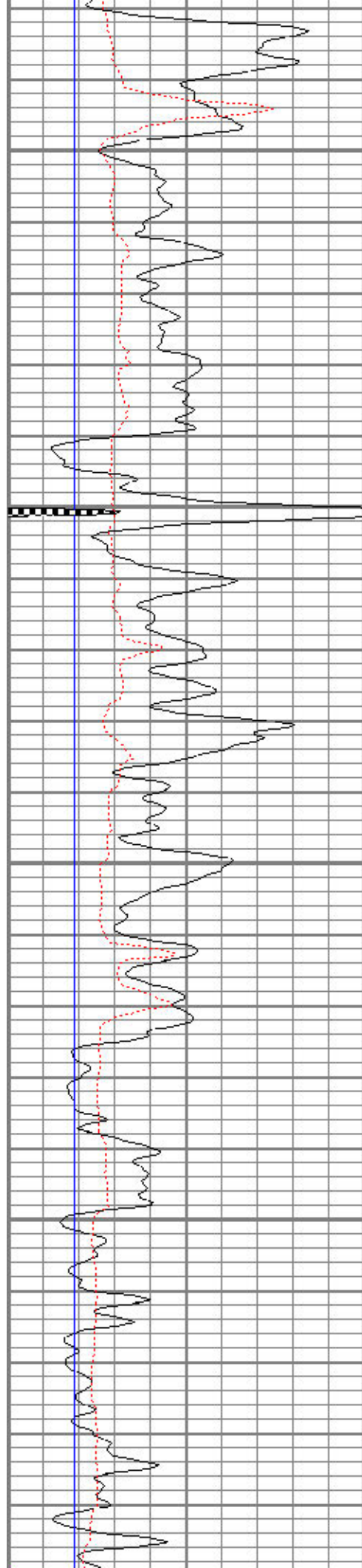
2900

2950

3000

3050



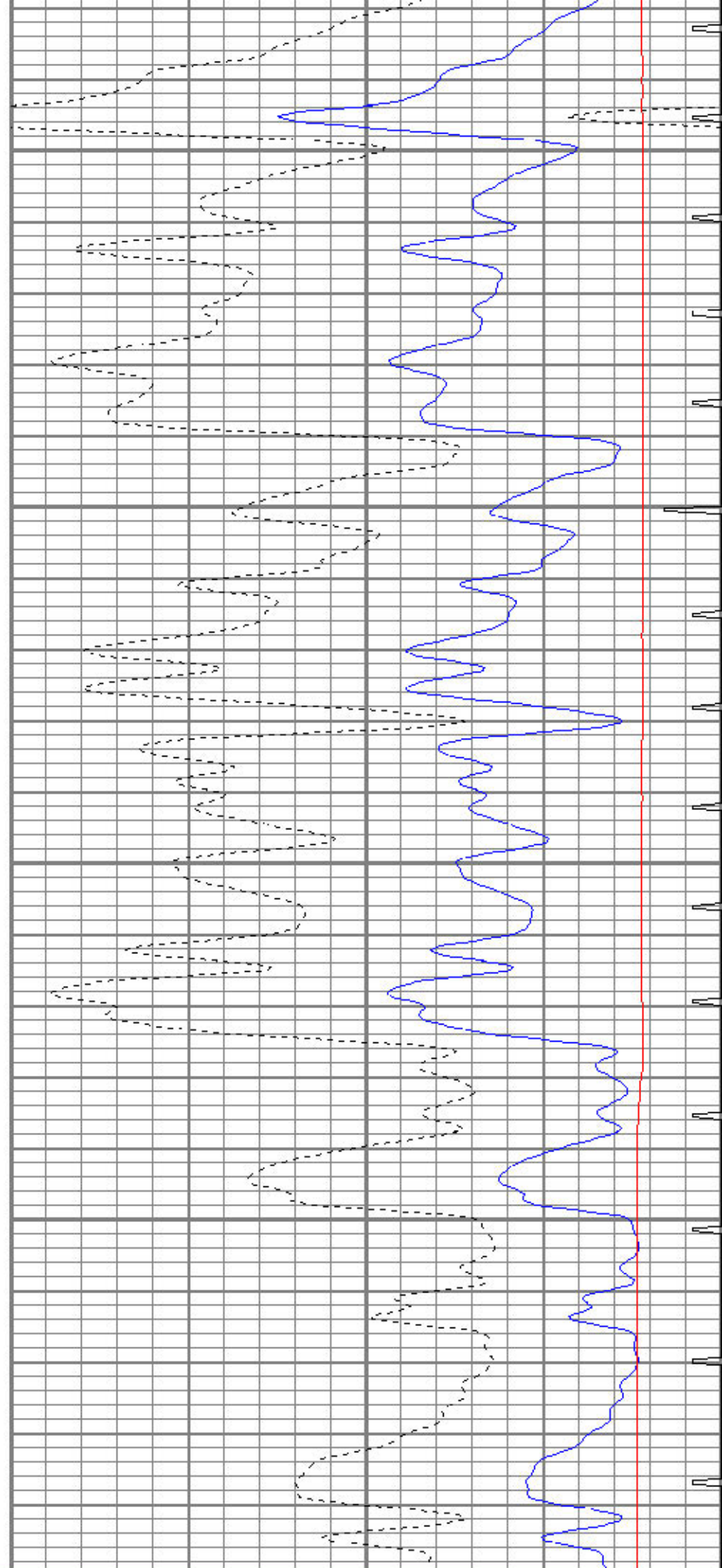


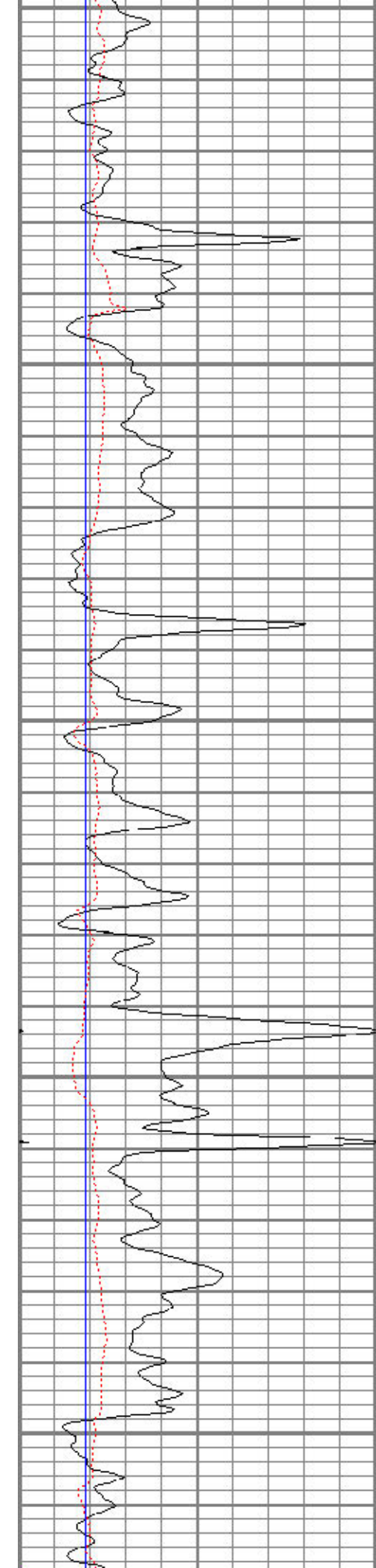
3100

3150

3200

3250





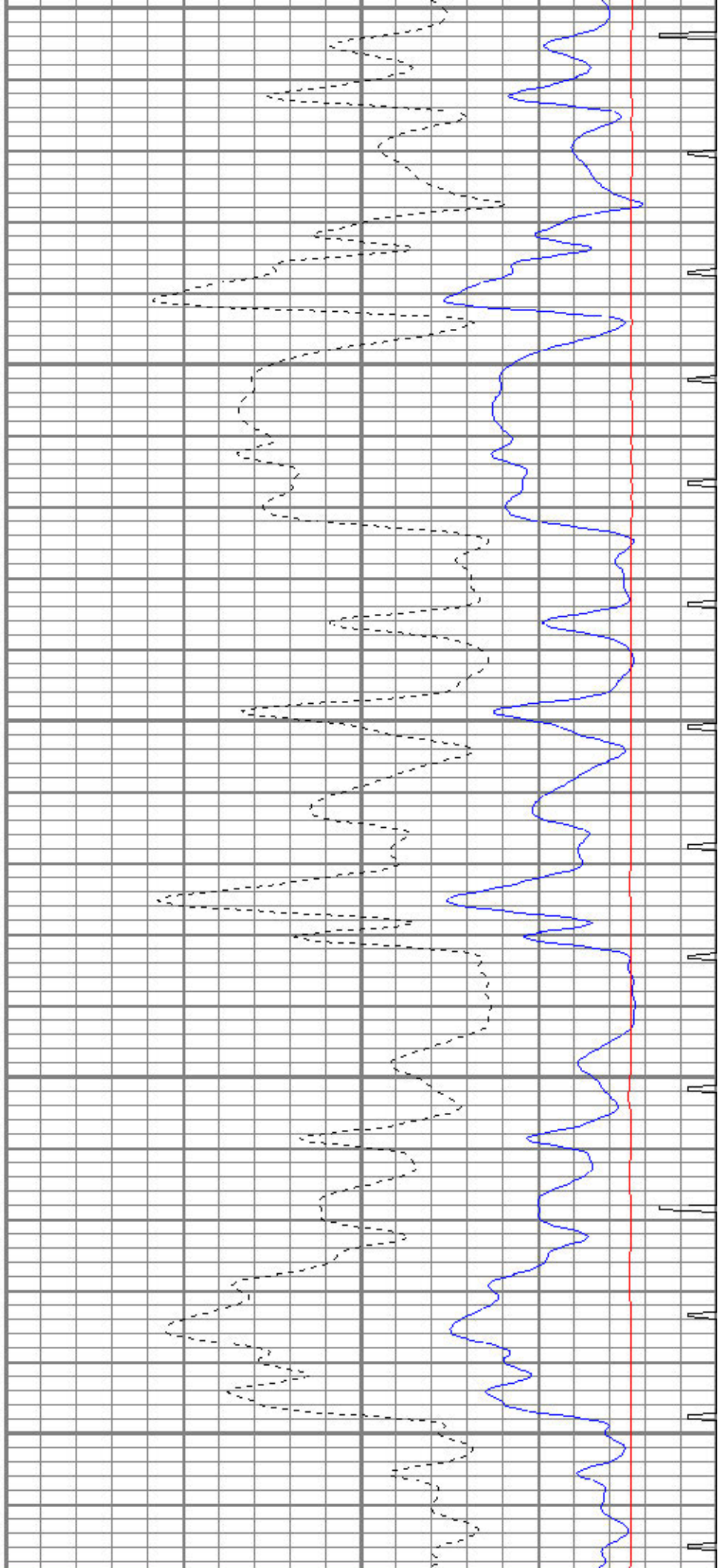
3300

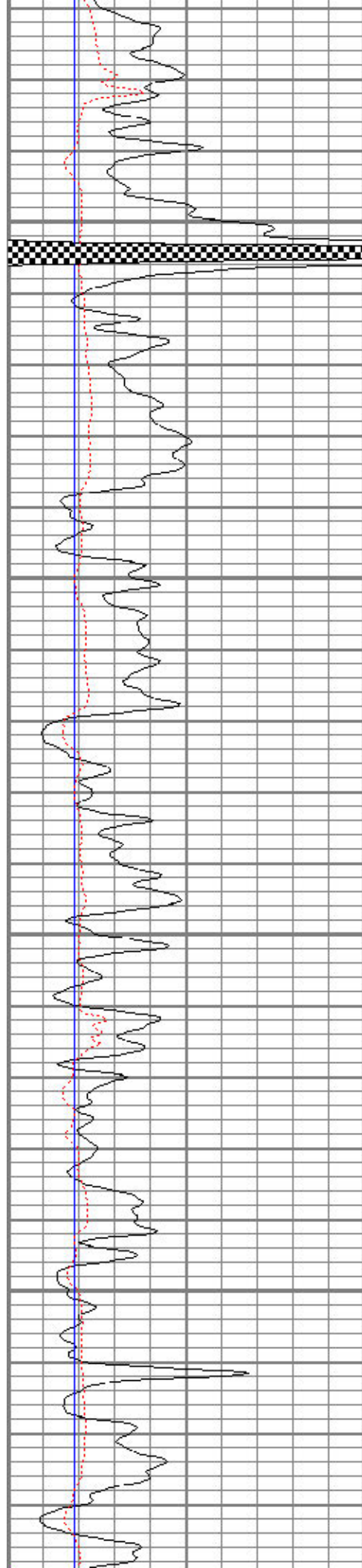
3350

3400

3450

3500



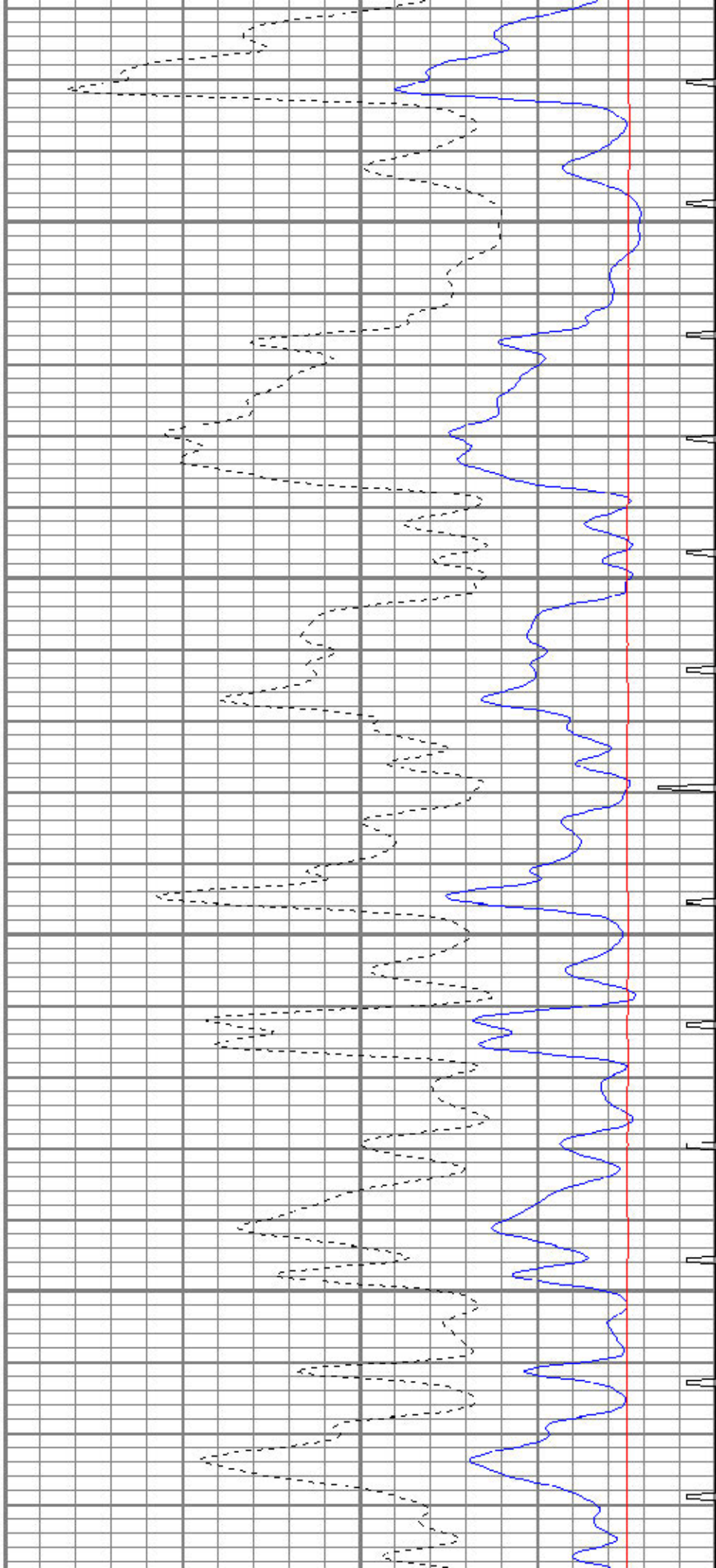


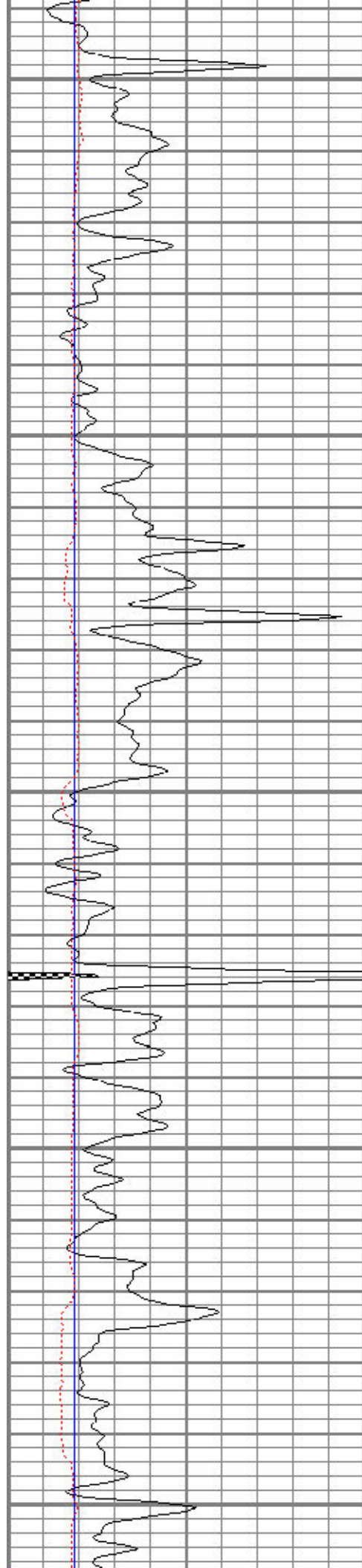
3550

3600

3650

3700





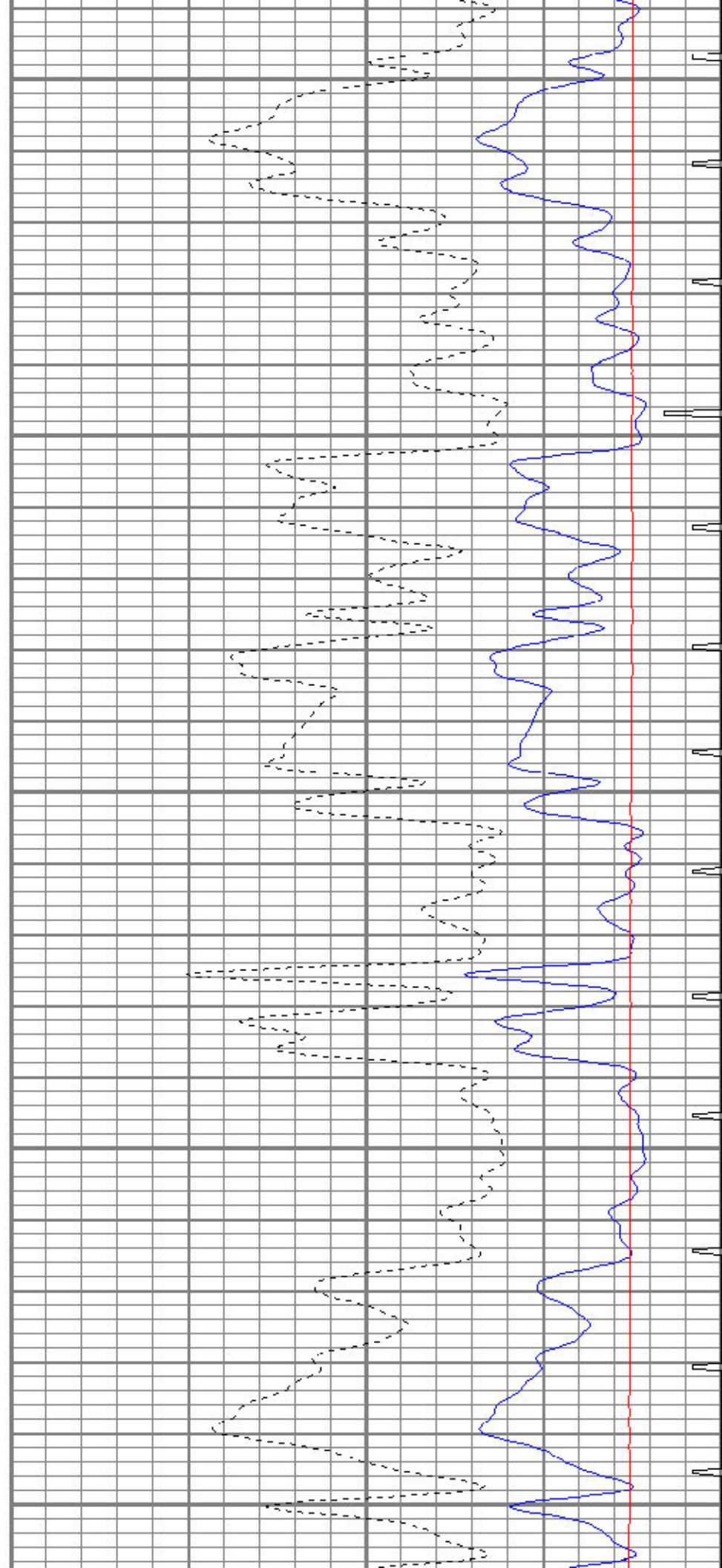
3750

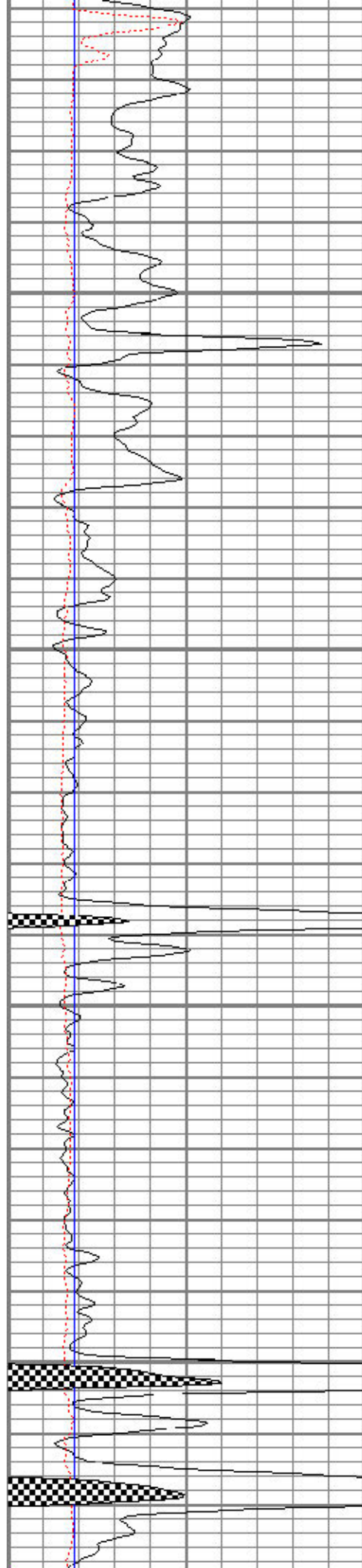
3800

3850

3900

3950



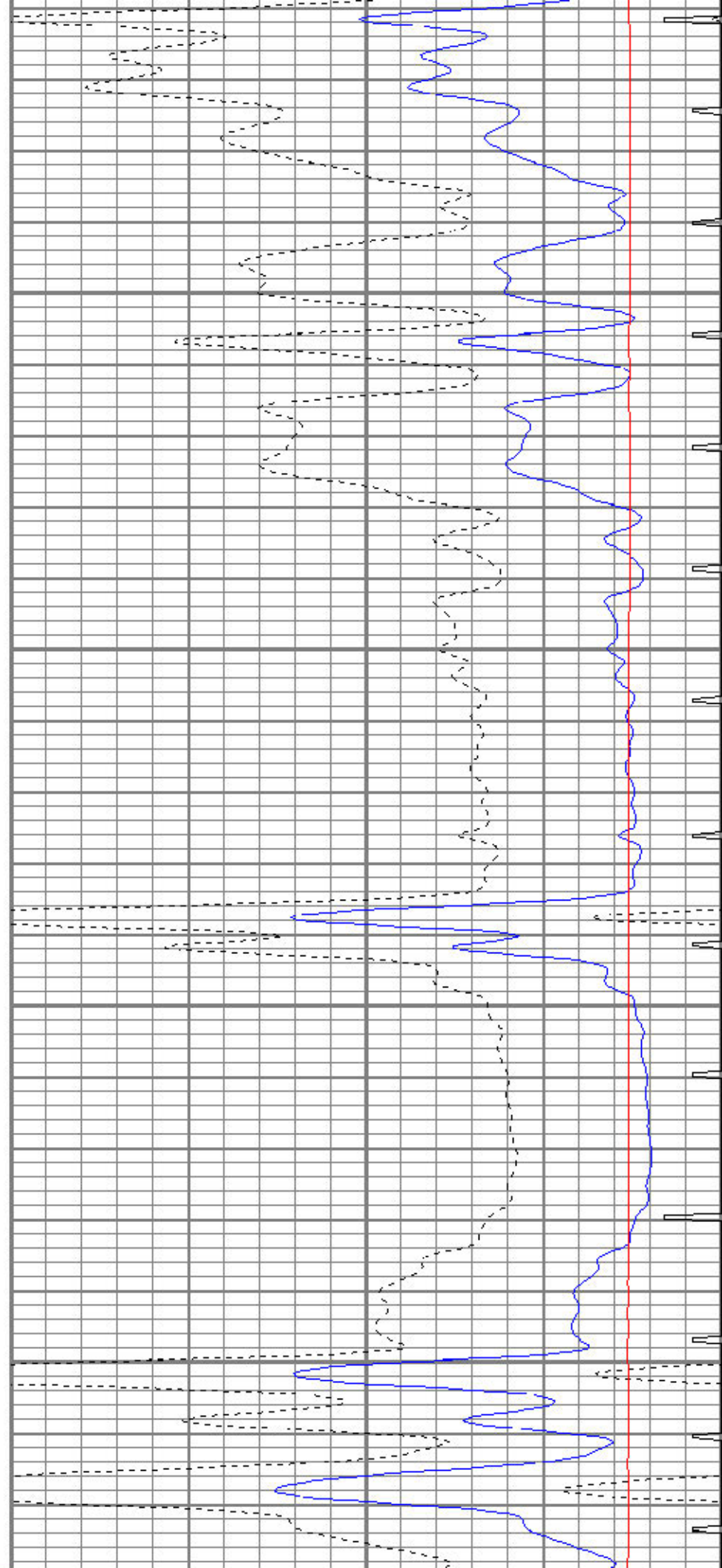


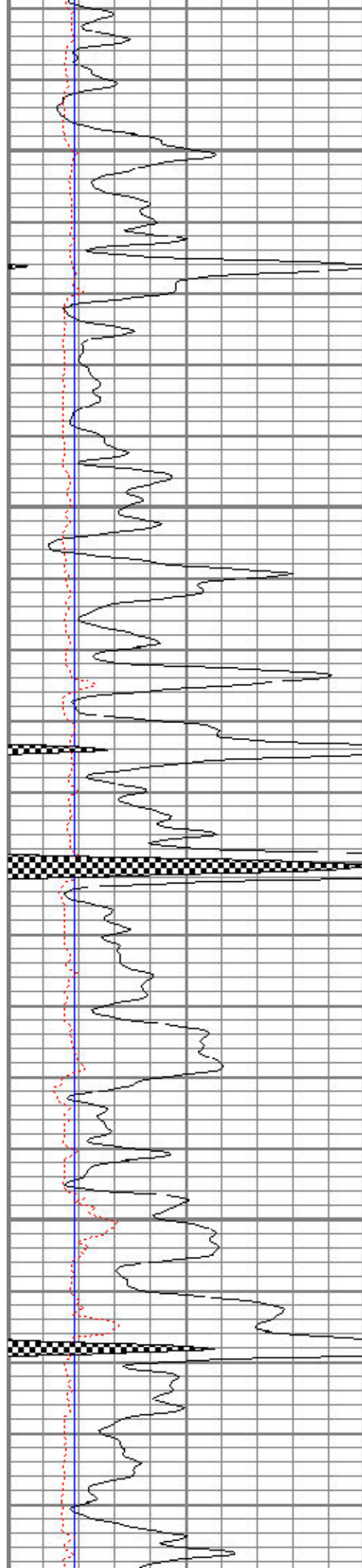
4000

4050

4100

4150



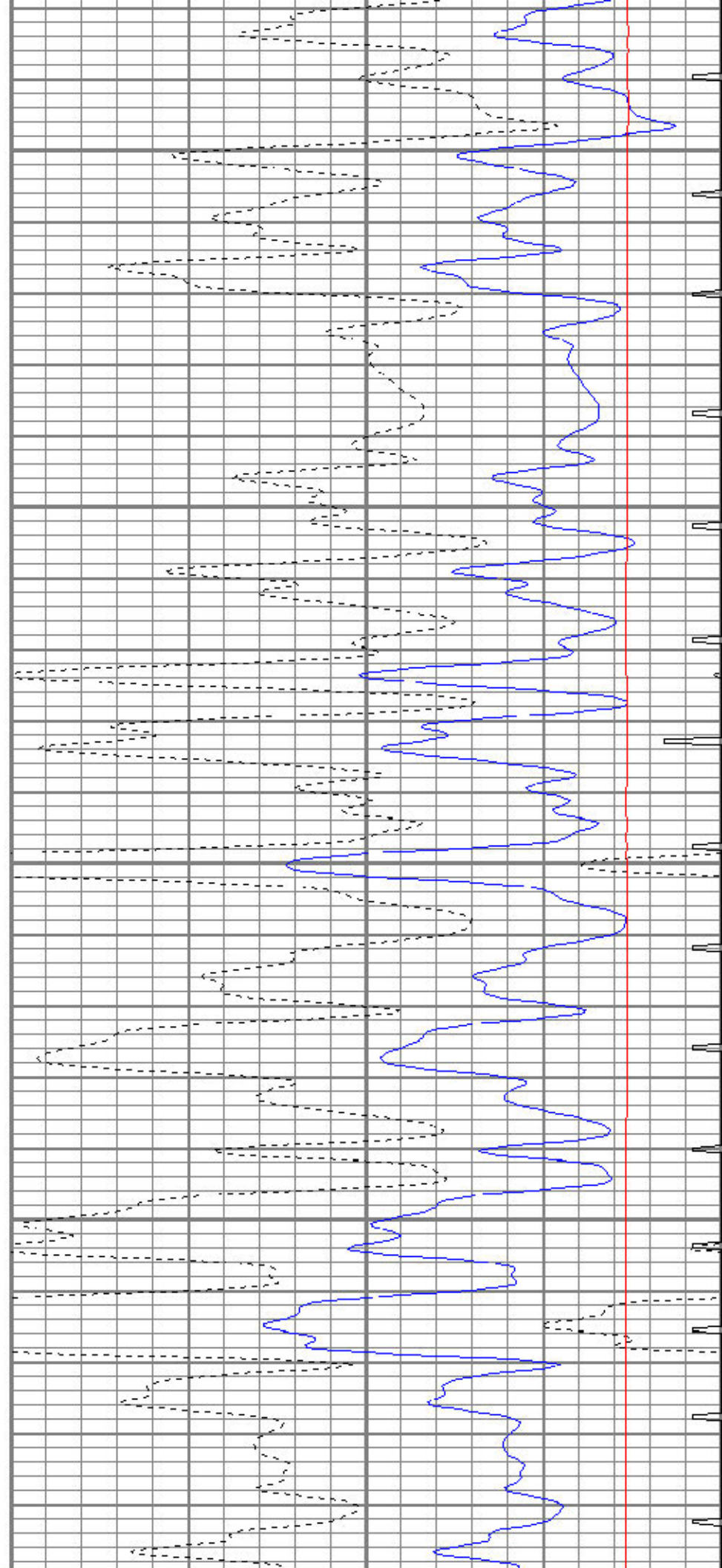


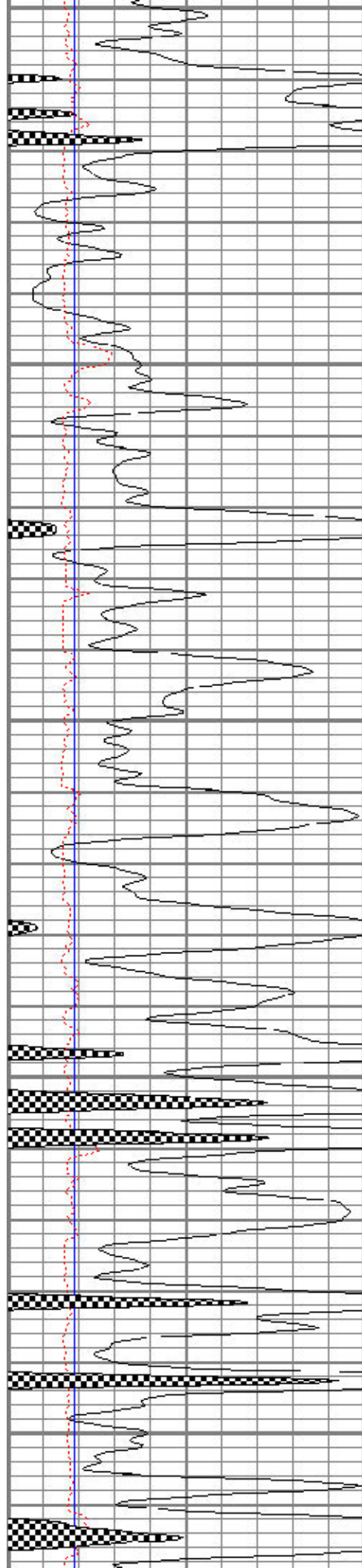
4200

4250

4300

4350





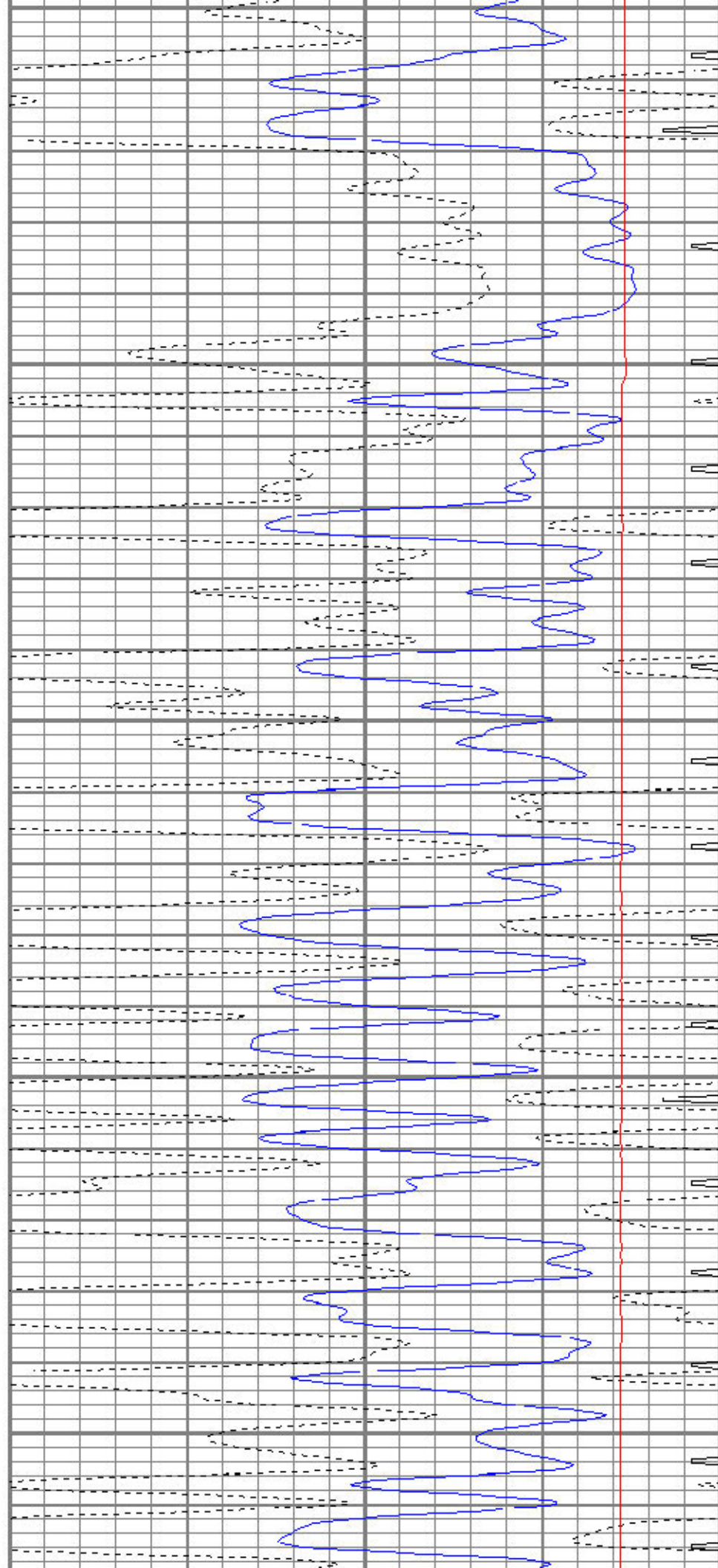
4400

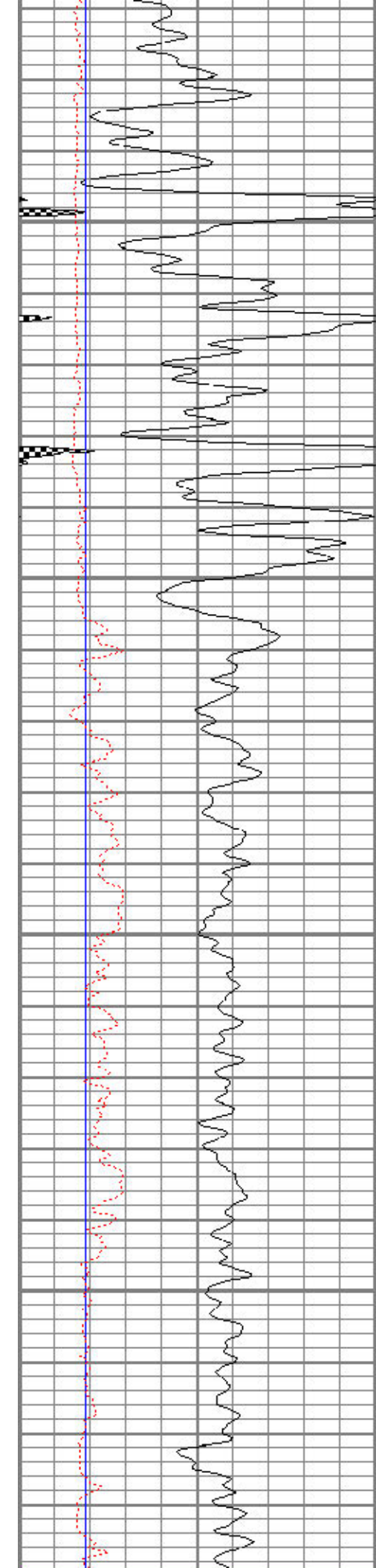
4450

4500

4550

4600





4650

4700

4750

4800

