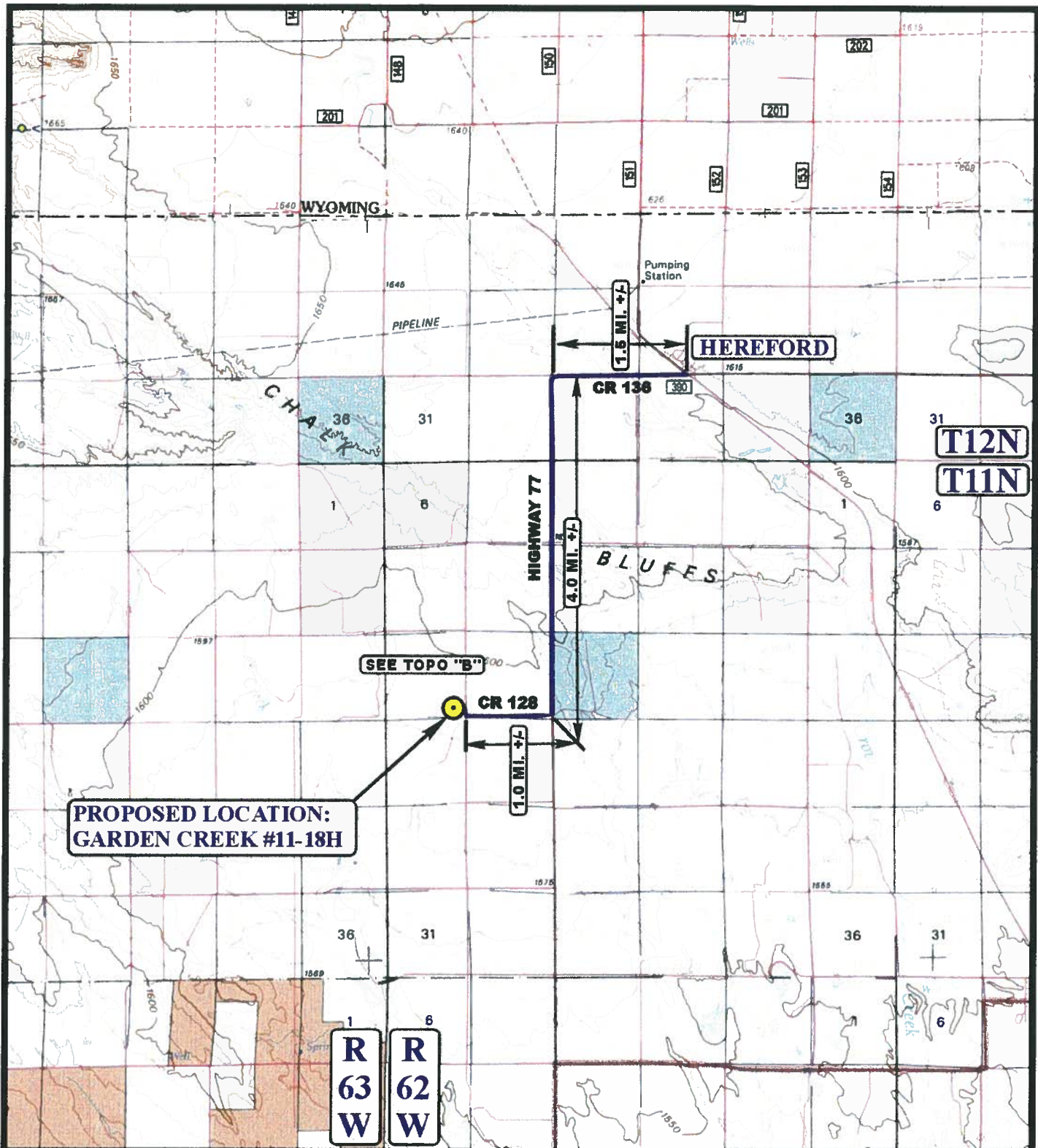


EOG RESOURCES, INC.
GARDEN CREEK #11-18H
SECTION 18, T11N, R62W, 6th P.M.

PROCEED IN A WESTERLY DIRECTION FROM HEREFORD, COLORADO ON COUNTY ROAD 136 APPROXIMATELY 1.5 MILES TO THE JUNCTION OF COUNTY ROAD 136 AND HIGHWAY 77 TO THE SOUTH; TURN LEFT AND PROCEED IN A SOUTHERLY DIRECTION APPROXIMATELY 4.0 MILES TO THE JUNCTION OF HIGHWAY 77 AND COUNTY ROAD 128 TO THE WEST; TURN RIGHT AND PROCEED IN A WESTERLY DIRECTION APPROXIMATELY 1.0 MILES TO THE JUNCTION OF COUNTY ROAD 128 AND COUNTY ROAD 75 TO THE NORTH; TURN RIGHT AND PROCEED IN A NORTHERLY DIRECTION APPROXIMATELY 0.1 MILES TO THE BEGINNING OF THE PROPOSED ACCESS ROAD TO THE WEST; FOLLOW ROAD FLAGS IN A WESTERLY DIRECTION APPROXIMATELY 0.1 MILES TO THE PROPOSED LOCATION.

TOTAL DISTANCE FROM HEREFORD, COLORADO TO THE PROPOSED LOCATION IS APPROXIMATELY 6.7 MILES.



LEGEND:

PROPOSED LOCATION



EOG RESOURCES, INC.

GARDEN CREEK #11-18H
SECTION 18, T11N, R62W, 6th P.M.
600' FSL 600' FEL



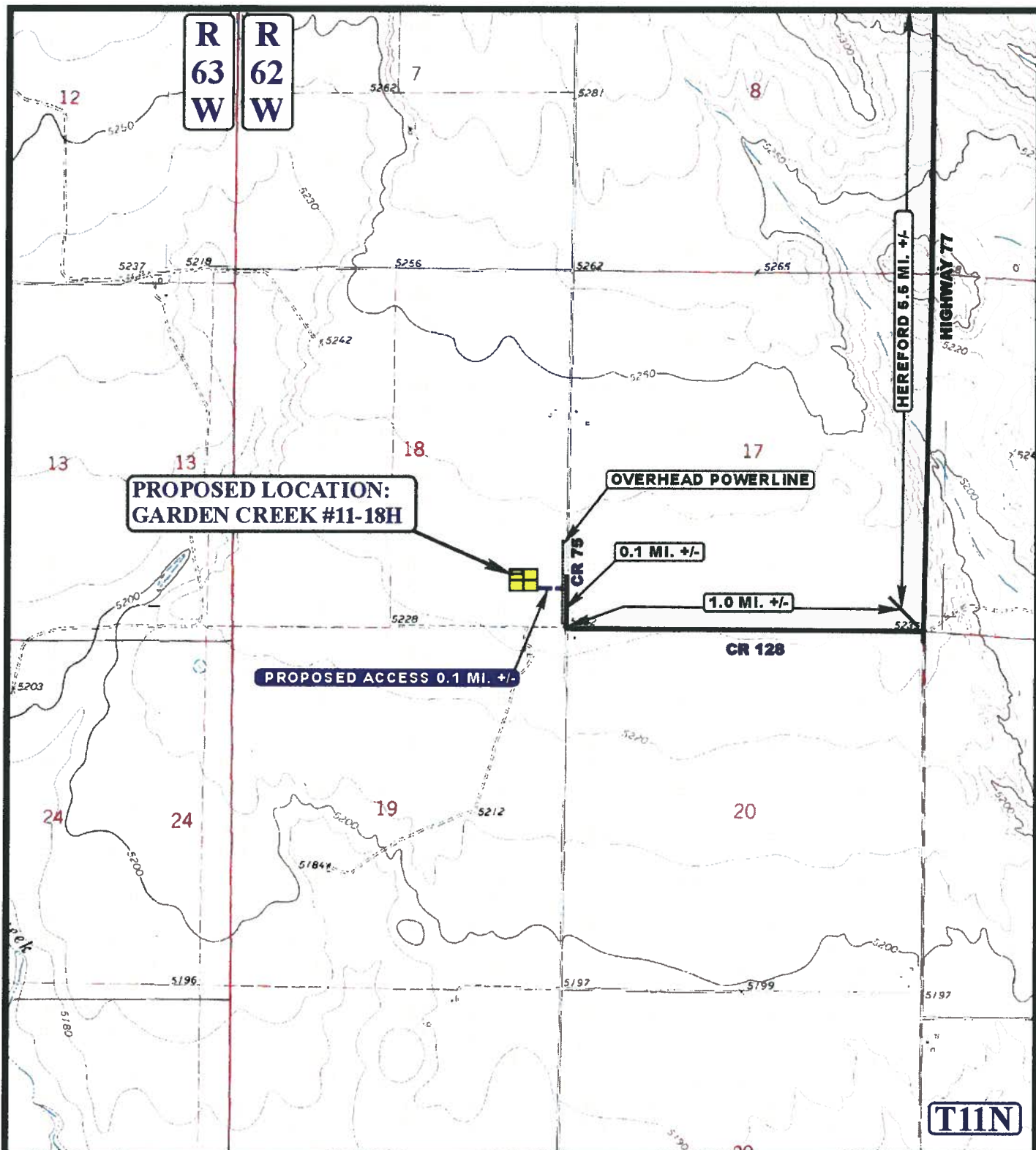
Utah Engineering & Land Surveying
 85 South 200 East Vernal, Utah 84078
 (435) 789-1017 * FAX (435) 789-1813

ACCESS ROAD
MAP

01 06 10
 MONTH DAY YEAR

SCALE: 1:100,000 DRAWN BY: J.H. REVISED: 00-00-00





LEGEND:

- EXISTING ROAD
- PROPOSED ACCESS ROAD
- OVERHEAD POWERLINE



EOG RESOURCES, INC.

GARDEN CREEK #11-18H
SECTION 18, T11N, R62W, 6th P.M.
600' FSL 600' FEL



Utah Engineering & Land Surveying
85 South 200 East Vernal, Utah 84078
(435) 789-1017 * FAX (435) 789-1813

ACCESS ROAD
MAP

01 06 10
MONTH DAY YEAR

SCALE: 1" = 2000' DRAWN BY: J.H. REVISED: 00-00-00

