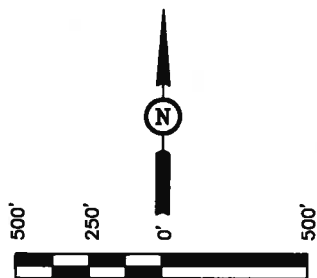


EOG RESOURCES, INC.

LOCATION DRAWING FOR GARDEN CREEK #11-18H SECTION 18, T11N, R62W, 6th P.M. 600' FSL 600' FEL

FIGURE #5

NE Cor. Sec. 18,
2009 Alum. Cap,
RLS #17492, Buried
0.5' Below Gravel
Road Intersection
Lat: 40.930447°
Long: 104.353792°



SCALE

DATE: 01-05-10

DRAWN BY: K.G.

18

1/4 Section Line

1/4 Section Line

1/16 Section Line

1/16 Section Line

Section Line
N00°07'30"E - 5255.92' (Meas.)



N19E 19.0 MILES
(To Railroad)

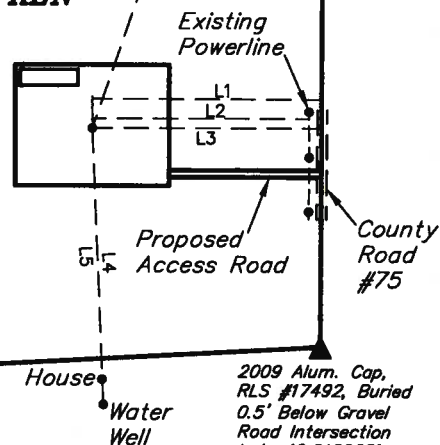
DAVID E.
SIEFKEN

LINE TABLE			
LINE	DIRECTION	LENGTH	FEATURE
L1	S89°52'30"E	600.00'	PROPERTY LINE
L2	EAST	568.25'	POWERLINE
L3	EAST	602.81'	COUNTY ROAD #75
L4	S02°27'40"E	719.65'	WATER WELL
L5	S02°22'44"E	654.13'	HOUSE

SW Cor. Sec. 18,
1921 Brass Cap,
0.5' High
Lat: 40.915308°
Long: 104.371539°

Section Line

S86°56'08"W - 4900.48' (Meas.)



2009 Alum. Cap,
RLS #17492, Buried
0.5' Below Gravel
Road Intersection
Lat: 40.916028°
Long: 104.353839°

PLANT COMMUNITY

- ☐ DISTURBED GRASSLAND
- ☐ NATIVE GRASSLAND
- ☐ SHRUB LAND
- ☐ PLAINS RIPARIAN
- ☐ MOUNTAIN RIPARIAN
- ☐ FOREST LAND
- ☐ WETLANDS AQUATIC
- ☐ ALPINE
- ☐ OTHER (Describe): _____

CURRENT LAND USE

- CROP LAND: ☐ IRRIGATED ☐ DRY LAND ☐ IMPROVED PASTURE ☐ HAY MEADOW ☐ CRP
- NON-CROP LAND: ☐ RANGELAND ☐ TIMBER ☐ RECREATIONAL ☐ OTHER (Describe) _____
- SUBDIVIDED: ☐ INDUSTRIAL ☐ COMMERCIAL ☐ RESIDENTIAL

FUTURE LAND USE

- CROP LAND: ☐ IRRIGATED ☐ DRY LAND ☐ IMPROVED PASTURE ☐ HAY MEADOW ☐ CRP
- NON-CROP LAND: ☐ RANGELAND ☐ TIMBER ☐ RECREATIONAL ☐ OTHER (Describe) _____
- SUBDIVIDED: ☐ INDUSTRIAL ☐ COMMERCIAL ☐ RESIDENTIAL

UINTAH ENGINEERING & LAND SURVEYING
85 So. 200 East * Vernal, Utah 84078 * (435) 789-1017