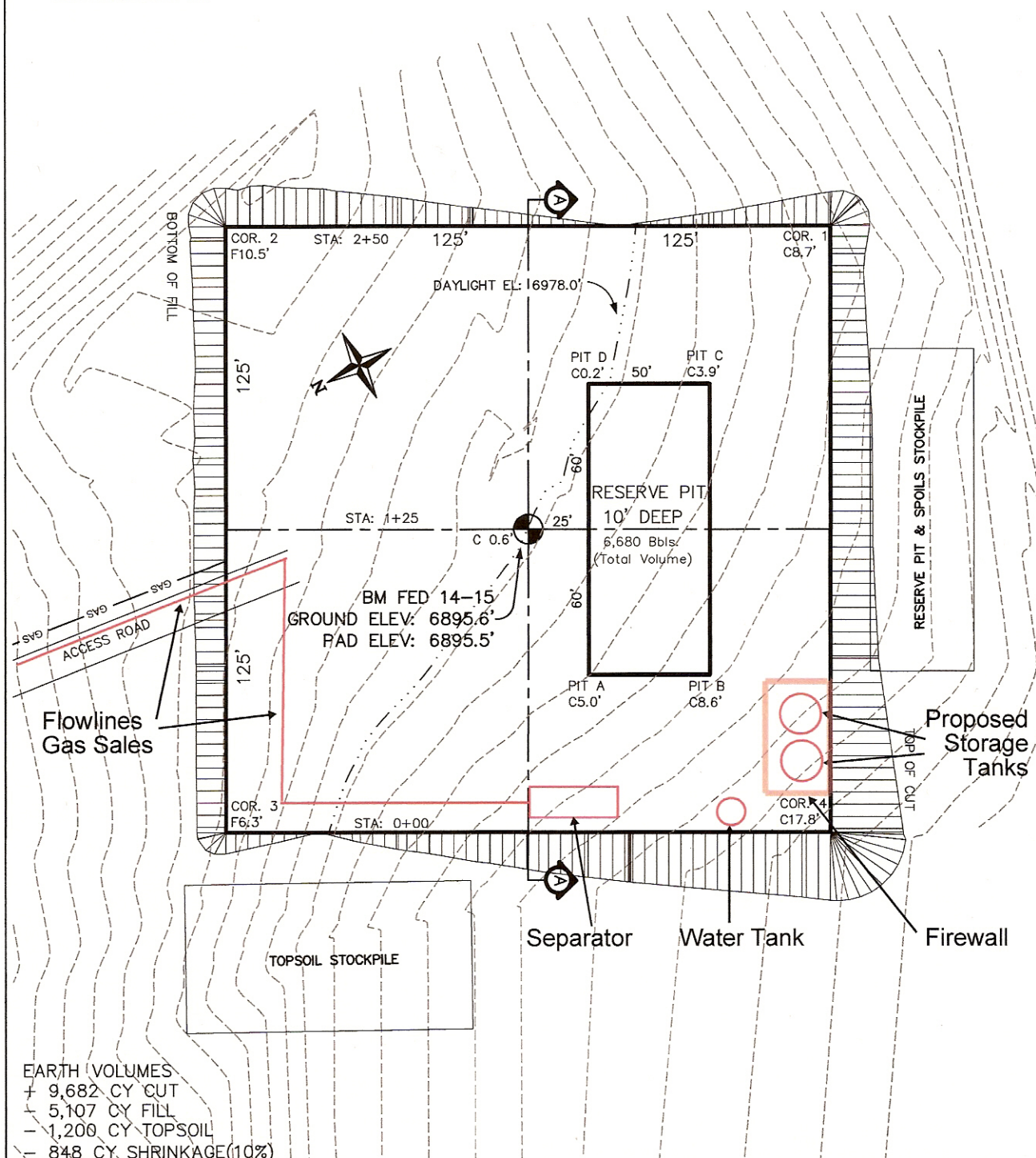


SLOPES:  
1.5:1 CUT  
1.5:1 FILL  
1.5:1 RESERVE PIT CUT



# LAYOUT DRAWING

Revised 10-30-09



EARTH VOLUMES  
+ 9,682 CY CUT  
- 5,107 CY FILL  
- 1,200 CY TOPSOIL  
- 848 CY SHRINKAGE(10%)  
NET 2,527 CY CUT

+ 9,682 CY CUT  
+ 1,389 RESERVE PIT  
= 11,071 CY TOTAL CUT

Rev.	Date	Description	By	Chk'd
2	11/15/07	RE-ROUTE ACCESS ROAD	DF	DF
1	4/27/07	MOVE WELL	DS	DF

## REVISIONS

Drawn By: DF Checked By: DF Scale: 1" = 60'

**Trihydro**  
CORPORATION  
350 Garfield - Solar Suite  
Lander, Wyoming 82520  
www.trihydro.com  
(P) 307/332.5280 (F) 307/332.4177

FIGURE 2

**NEW FRONTIER ENERGY, INC.**  
**BM FEDERAL 14-15**  
**PROPOSED LAYOUT**

**662' FSL, 2017' FEL**  
**SW $\frac{1}{4}$ SE $\frac{1}{4}$  SEC 14; T12N, R89W; 6th PM**  
**MOFFAT COUNTY, COLORADO**

Date: 04/02/07

File: 763-001-001 COLORADO.DWG

Rev: 1