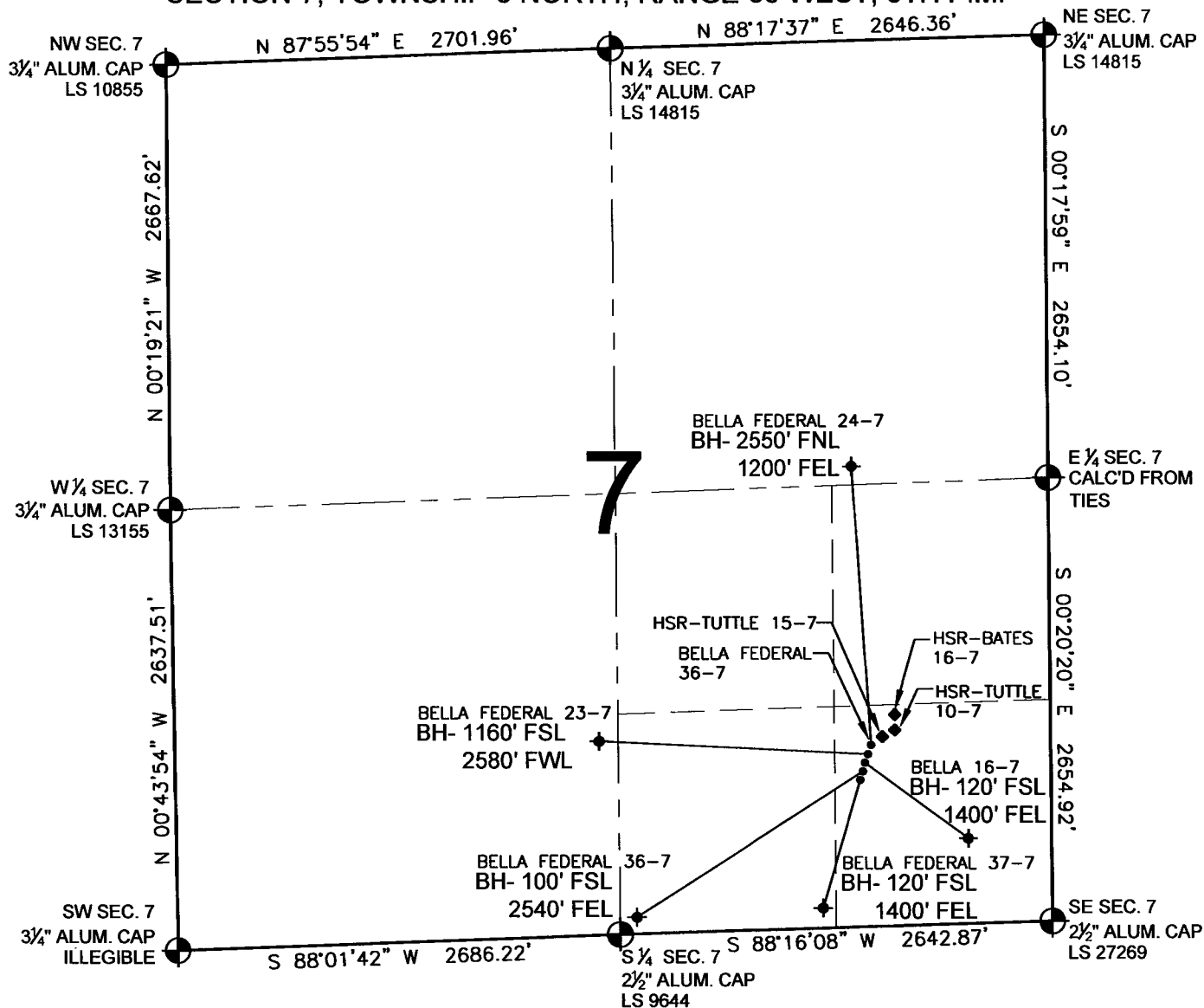


# PAD DRAWING - BELLA 5 PAD

SECTION 7, TOWNSHIP 3 NORTH, RANGE 66 WEST, 6TH P.M.



## NOTES:

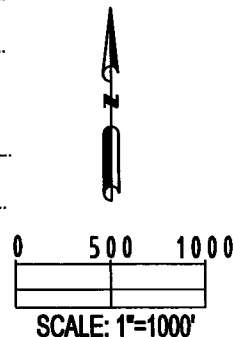
1. THIS SURVEY WAS DONE BY GPS METHODS AND CONFORMS TO THE MINIMUM STANDARDS SET BY THE C.O.G.C.C., RULE NO. 215 (PDOP VALUE IS LESS THAN 6.0, LATITUDE AND LONGITUDE ARE ACCURATE TO 5 DECIMAL PLACES, AND GPS OBSERVATIONS ARE DIFFERENTIAL AND DONE BY QUALIFIED PERSONNEL.)
2. ELEVATIONS SHOWN AT THE WELL HEAD, AS WELL AS HORIZONTAL CONTROL, ARE BASED ON GPS-RTK VALUES DERIVED FROM DOING 2-HOUR STATIC GPS SESSIONS AND REDUCTIONS USING O.P.U.S. SOLUTIONS.  
VERTICAL = NAVD88; HORIZONTAL = NAD83/92
3. THE BEARINGS SHOWN HEREON ARE BASED ON GPS OBSERVATIONS BETWEEN THE MONUMENTS SHOWN HEREON AS FOUND ON THE FIELD DATE BELOW.
4. DISTANCES SHOWN ARE AT GROUND LEVEL, AS MEASURED IN THE FIELD, WITH TIES TO WELLS MEASURED AT A PERPENDICULAR TO SECTION LINES.

## LEGEND

- = EXISTING MONUMENT   
 = BOTTOM HOLE   
 BH= BOTTOM HOLE  
 = PROPOSED WELL   
 = EXISTING WELL

## NOTES:

BELLA FEDERAL 37-7 TO BE AT 880' FSL, 1165' FEL.  
 BOTTOM HOLE AT 120' FSL & 1400' FEL.  
 BELLA FEDERAL 36-7 TO BE AT 895' FSL, 1161' FEL.  
 BOTTOM HOLE AT 100' FSL & 2540' FEL.  
 BELLA 16-7 TO BE AT 910' FSL, 1157' FEL.  
 BOTTOM HOLE AT 510' FSL & 510' FEL.  
 BELLA FEDERAL 23-7 TO BE AT 925' FSL, 1153' FWL.  
 BOTTOM HOLE AT 1160' FSL & 2580' FWL.  
 BELLA FEDERAL 24-7 TO BE AT 941' FSL, 1148' FEL.  
 BOTTOM HOLE AT 2550' FNL & 1200' FEL.  
 HSR-TUTTLE 15-7 IS 930' FSL, 1102' FEL.  
 HSR-TUTTLE 10-7 IS 945' FSL, 1072' FEL.  
 HSR-BATES 16-7 IS 1002' FSL, 1072' FEL.



REVISIONS		PREPARED BY:   <b>PFS</b> Petroleum Field Services, LLC 1801 W. 13th Ave. Denver, CO 80204
INITIAL	DATE	

KERR-MCGEE OIL & GAS ONSHORE LP

FIELD DATE: 07-22-09	PAD NAME: BELLA 5 PAD
DRAWING DATE: 07-27-09	SURFACE LOCATION:
BY: SMF	WELD COUNTY, COLORADO SE 1/4 SE 1/4, SEC. 7, T3N, R66W