


TOWNSHIP 4 NORTH, RANGE 67 WEST

SCALE

 Diameter = 2,000 feet

## LEGEND A

## WATER RESOURCES

- Water Wells
- Lakes
- Major Rivers
- Streams
- 300-Foot Stream Buffers

## LEGEND B

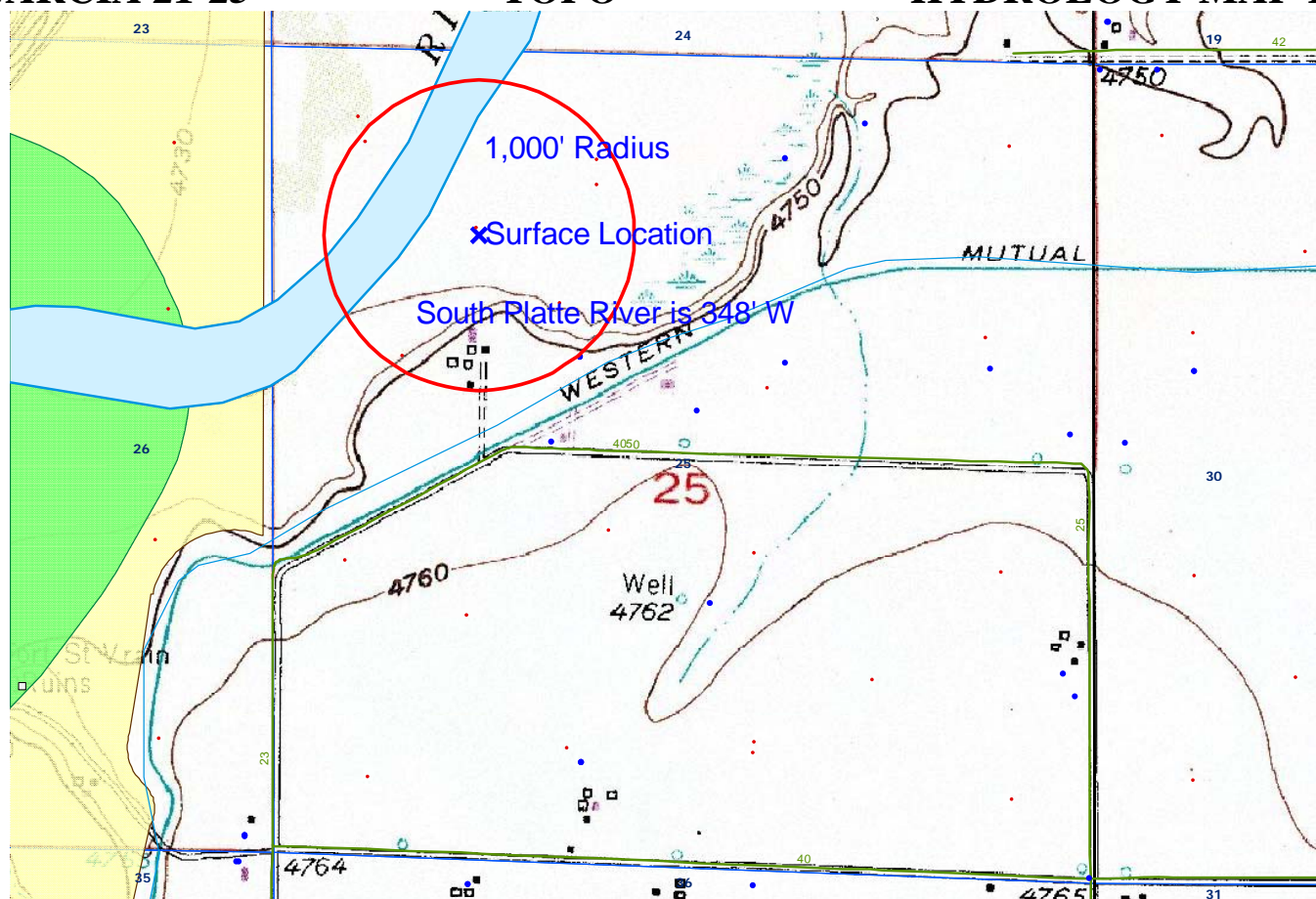
## 1200-SEARIES WILDLIFE AREAS

- RSO Areas
- RSO\_Osprey\_Curren
- SWH Areas
- State Wildlife Areas

**GARCIA 21-25**

# TOPO

## HYDROLOGY MAP-B



TOWNSHIP 4 NORTH, RANGE 67 WEST

## SCALE

○ Diameter = 2,000 feet


LEGEND A

## WATER RESOURCES

- Water Wells
- Lakes
- Major Rivers
- Streams
- 300-Foot Stream Buffers

LEGEND B

## 1200-SEARIES WILDLIFE AREAS


-  RSO Areas  
 RSO\_Osprey\_Curren  
 SWH Areas  
 State Wildlife Areas





TOWNSHIP 4 NORTH, RANGE 67 WEST

SCALE

 Diameter = 2,000 feet

## LEGEND A

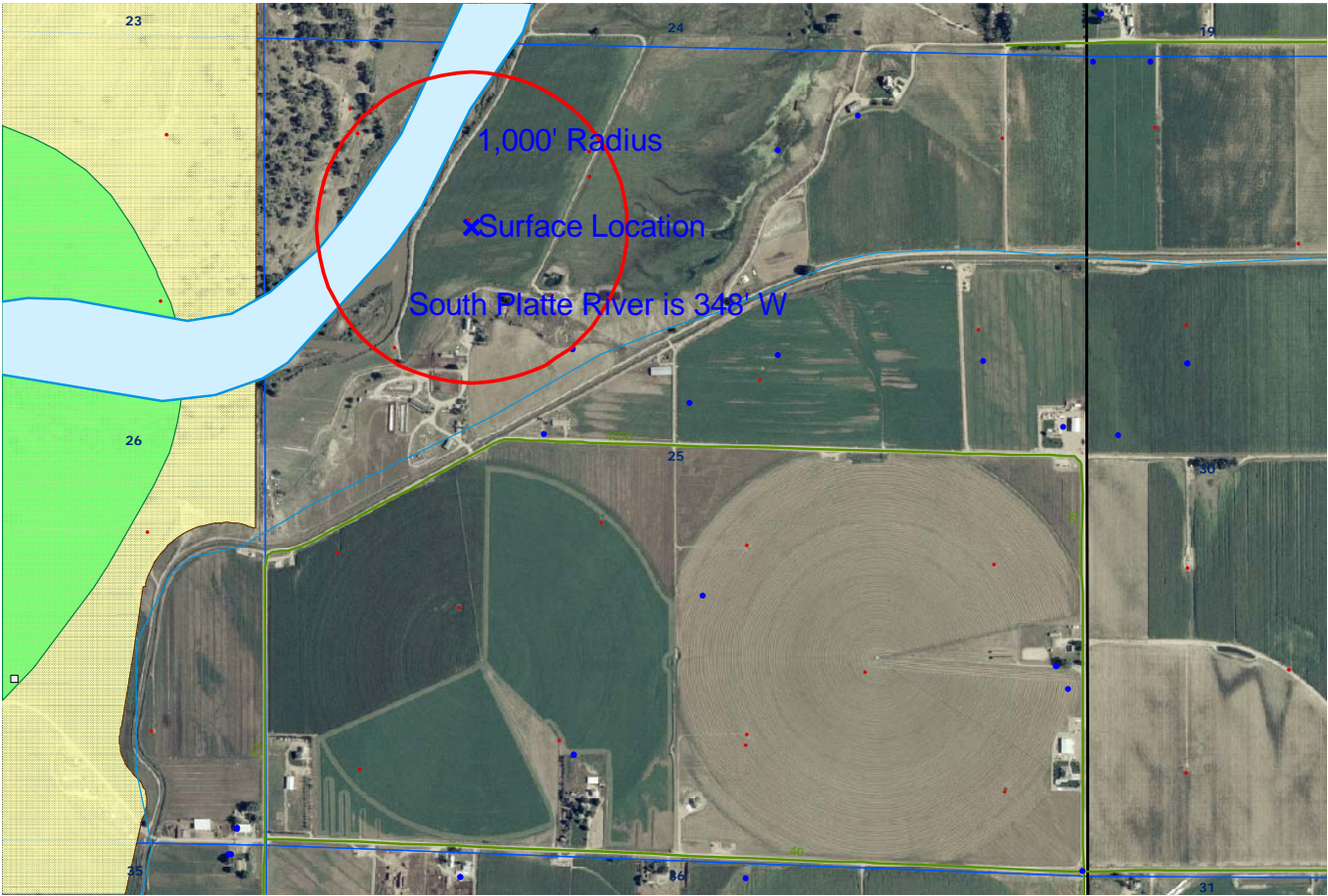
## WATER RESOURCES

- Water Wells
- Lakes
- Major Rivers
- Streams
- 300-Foot Stream Buffers


## LEGEND B






## 1200-SEARIES WILDLIFE AREAS



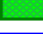

- RSO Areas
- RSO\_Osprey\_Curren
- SWH Areas
- State Wildlife Areas



TOWNSHIP 4 NORTH, RANGE 67 WEST

SCALE	
	Diameter = 2,000 feet

LEGEND A
WATER RESOURCES
 Water Wells
 Lakes
 Major Rivers
 Streams
 300-Foot Stream Buffers

LEGEND B
1200-SEARIES WILDLIFE AREAS
 RSO Areas
 RSO_Osprey_Curren
 SWH Areas
 State Wildlife Areas