

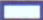




**80 ACRE DENSITY DRILLING  
INDIAN CREEK/WEST ANIMAS AREA**

-  FC WELLS OPERATED BY CHEVRON
-  FC WELLS OPERATED BY OTHERS
-  FC 320 ACRE DRILLING/SPACING UNITS
-  FC 80 ACRE APPLICATION DRILLING WINDOWS
-  CHEVRON LEASEHOLD



02084561

#12-203

11

12

050670763600  
INDIAN CREEK WHEELER 12U-1

7

050670669200  
WHEELER 7U-1

050670870600  
ANIMAS WEST 7U-3

8

050670865200  
ISGAR A 4

050670864700  
WHEELER 13-4

050670765000  
INDIAN CREEK WHEELER 13-2

050670727300  
ISGAR GAS UNIT A 1

15

14

13

18

17

34N-10W

SURFACE LOCATION

050670897400  
INDIAN CREEK SU 13-3

050670766800  
INDIAN CREEK SU 13-1

050670695900  
CLARY GAS UNIT 1

050670841100  
CLARY GAS UNIT 2

34N-9W

050670696800  
WEASELSKIN GAS UNIT 1

050670727400  
BILLY RAY GAS UNIT A 1

22

23

24

19

20

050670862800  
SOUTHERN UTE FC 34-10 23-4

050670743901  
SOUTHERN UTE FC 34-10 23-1

050670744001  
SOUTHERN-UTE FC 34-10 24-1

050670839900  
BILLY RAY 2

050670842200  
WEASELSKIN GAS UNIT 2

050670838600  
SOUTHERN UTE FC 34-10 24-6

050670838000  
SOUTHERN UTE FC 34-10 26-4

050670651901  
SOUTHERN UTE FC 34-9 30-7

27

26

25

050670744201  
SOUTHERN UTE FC 34-10 25-2

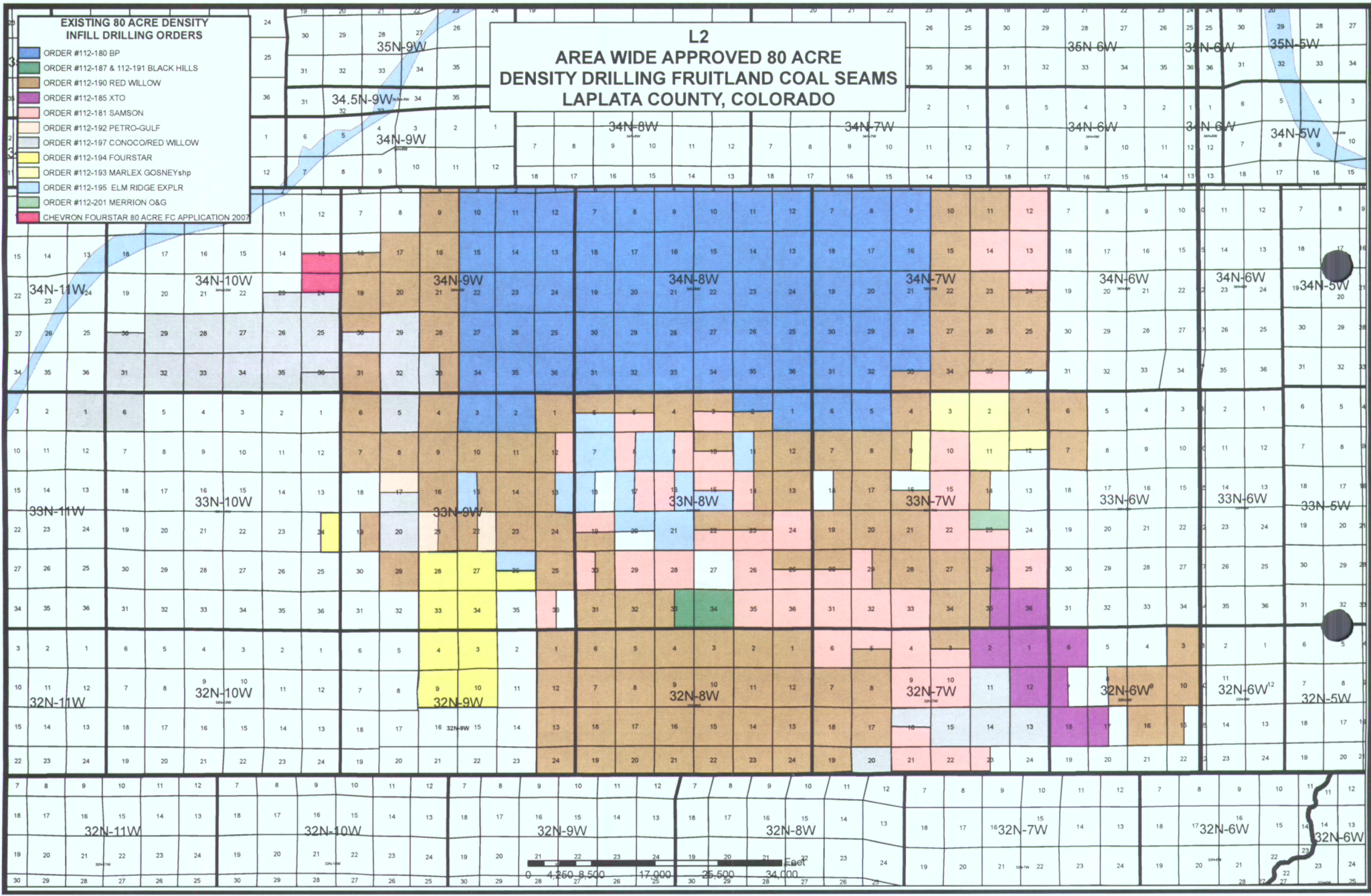
30

29

LAPLATA CO, COLORADO

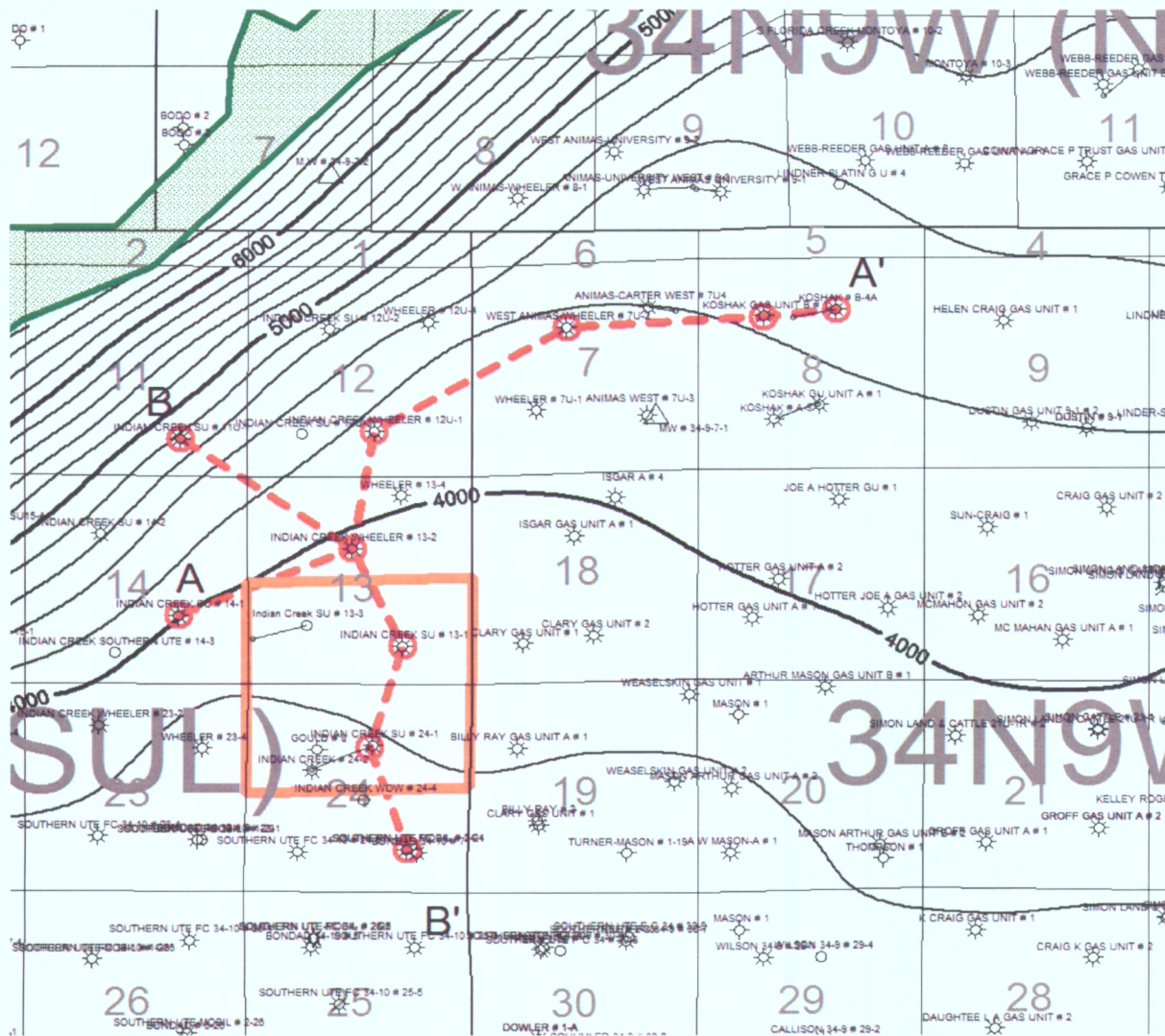
0 Feet  
0 345 690 1,380 2,070 2,760

L1  
APPLICATION LANDS 80 ACRE DENSITY  
DRILLING FRUITLAND COAL SEAMS





## Exhibit G 1



### Fruitland Outcrop Delineation



100 PERCENT SUIT

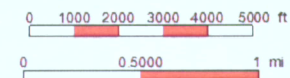


### CROSS SECTION LINES



1:48000

1 inch = 0.758 miles



Chevron North America Exploration &amp; Production

**MidContinent/Alaska Business Unit**

### Indian Creek & West Animas Field Areas

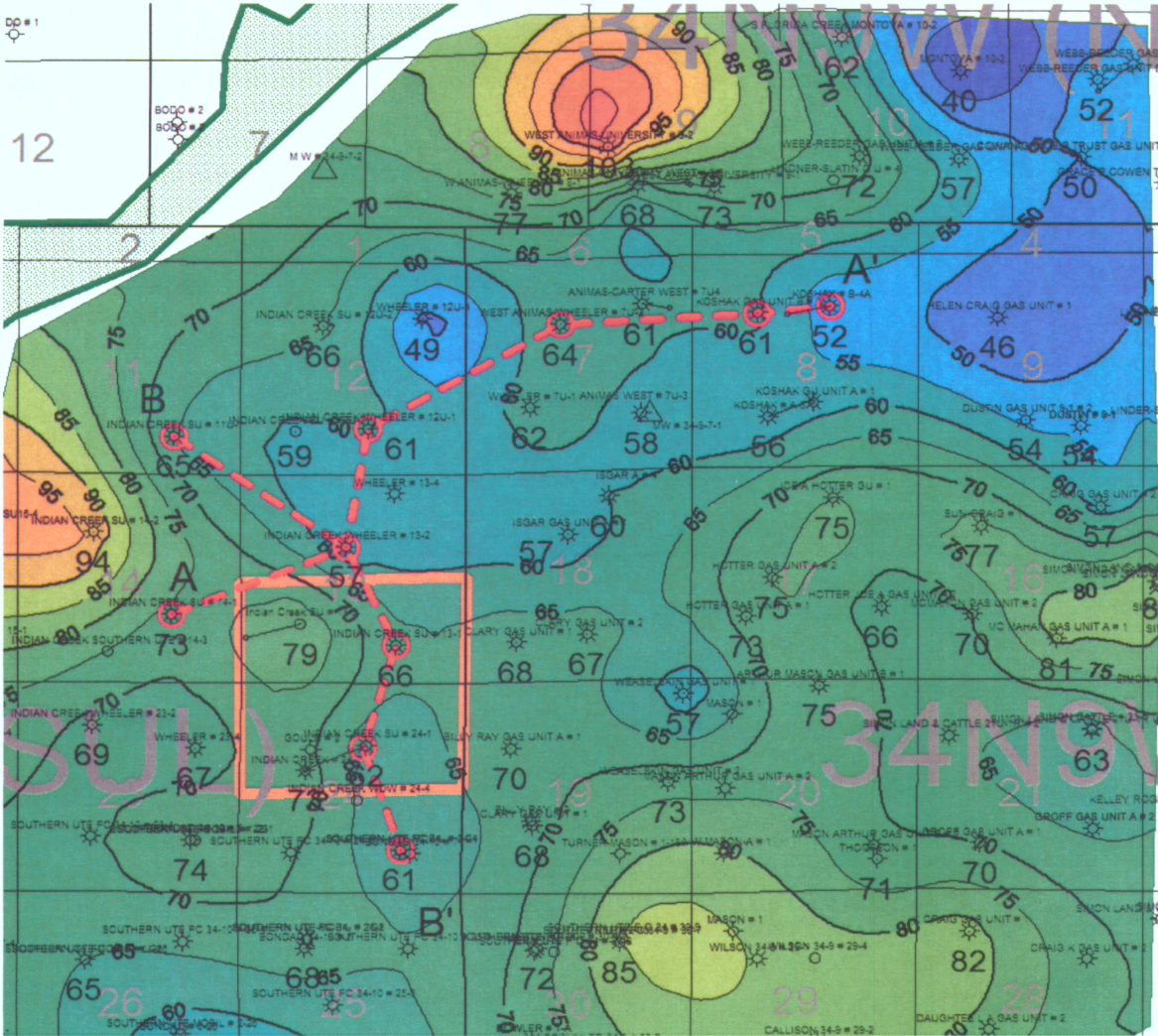
### Structure Contour Map of the Base of the Fruitland Coal

Datum: Elevation Above Sea Level

Contour Interval: 200 ft



Exhibit G 1a



Fruitland Outcrop Delineation



CROSS SECTION LINES



WA IC 80 ACRE 100 PERCENT SUIT



N

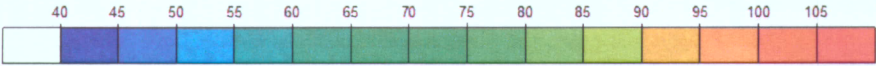
1:48000

1 inch = 0.758 miles

0 1000 2000 3000 4000 5000 ft

0 0.5000 1 mi

NET PAY



Chevron North America Exploration & Production

MidContinent/Alaska Business Unit

Indian Creek & West Animas Field Areas

FRIDC TOTAL NET THICKNESS

GR = 100 counts

Density = 2.0 gm/cc

Contour Interval: 5 ft

# Exhibit E4a - Example Decline Curve

