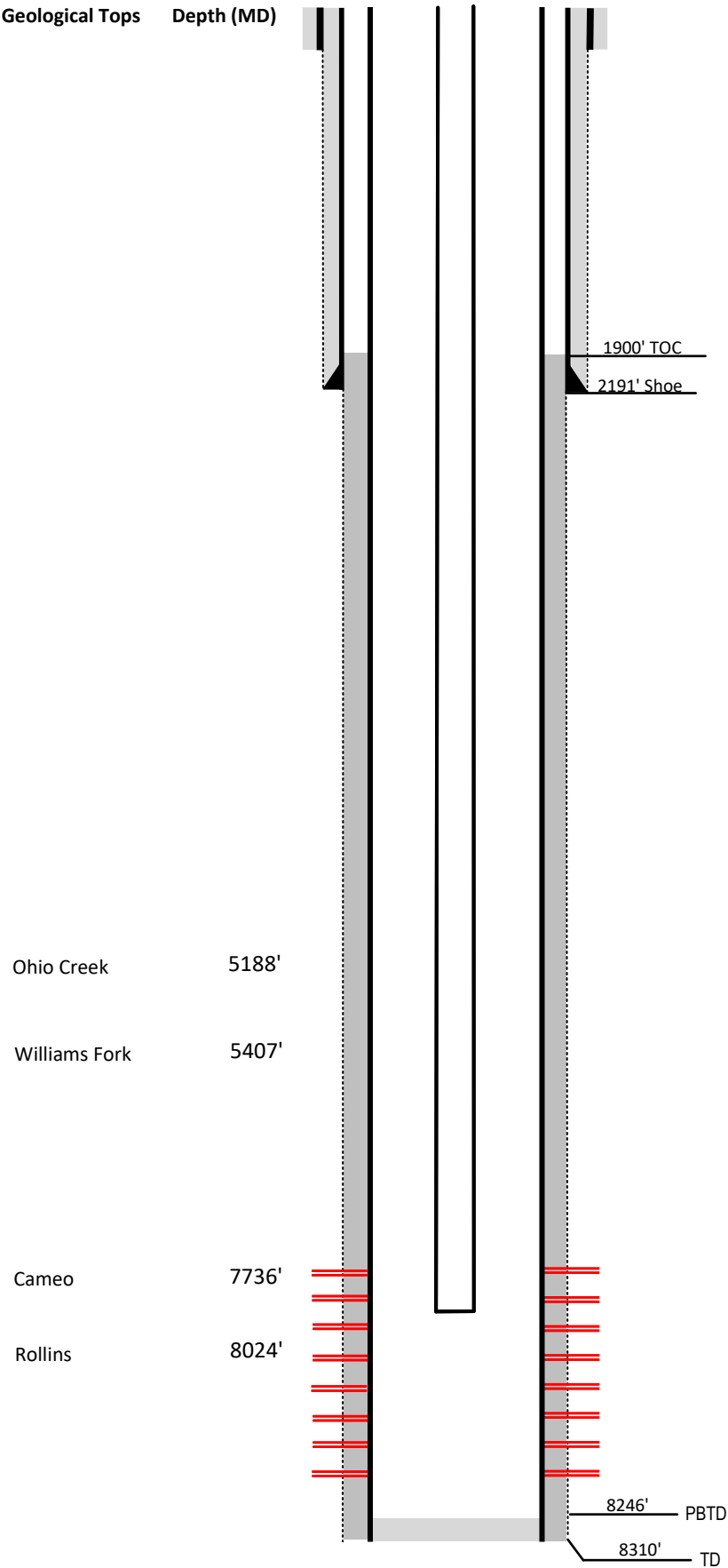


Laramie Energy

Current Wellbore Diagram
Not to scale

FEDERAL WELL: YES ☒ NO ☐
CA COC 71995



Well Name	Nvega #26-344
API	05-077-09466-00
Surface Location	SWSE Sec 26 T9S R93W
GPS Coordinates	39.242017, -107.734258
County, State	Mesa County, Co
Diagram Date	4/22/2024

Hole	24" @ 65'
Conductor	16" @ 65'
Cement	Surface

Surface Hole	12.25" @ 2199'
Casing	8 5/8" 32# J-55 @ 2199'
Cement	700 sks
TOC	Surface

Production Hole	7.875" @ 8307'
Casing	4 1/2" 11.6# I-80 @ 8307'
Cement	761 sks
TOC	1900'

Tubing	2 3/8" I-80 EUE @ 7514'
--------	-------------------------

Perforations	Top	Bottom
	6725'	8168'