

|                        |                                  |                      |        |                                  |         |      |             |
|------------------------|----------------------------------|----------------------|--------|----------------------------------|---------|------|-------------|
| Company                | Occidental Petroleum Corporation | Company              |        | Occidental Petroleum Corporation |         |      |             |
| Well                   | WEST FARMS 22-14                 | Well                 |        | WEST FARMS 22-14                 |         |      |             |
| Field                  | Wattenberg                       | Field                |        | Wattenberg                       |         |      |             |
| County                 | Weld                             | County               |        | Weld                             |         |      |             |
| State                  | Colorado                         | State                |        | Colorado                         |         |      |             |
| Location:              |                                  | API # : 05-123-22416 |        | Other Services                   |         |      |             |
| SEC 14 TWP 3N RGE 67W  |                                  | NWSW                 |        | SQS                              |         |      |             |
| Permanent Datum        | Ground Level                     | Elevation            | 4790   | Elevation                        |         |      |             |
| Log Measured From      | Kelly Bushing                    |                      |        | K.B. 4802                        |         |      |             |
| Drilling Measured From | Kelly Bushing                    |                      |        | D.F. 4801                        |         |      |             |
|                        |                                  |                      |        | G.L. 4790                        |         |      |             |
| Date                   | 02 February 2024                 |                      |        |                                  |         |      |             |
| Run Number             | One                              |                      |        |                                  |         |      |             |
| Depth Driller          | 7800                             |                      |        |                                  |         |      |             |
| Depth Logger           | 3301                             |                      |        |                                  |         |      |             |
| Bottom Logged Interval | 3300                             |                      |        |                                  |         |      |             |
| Top Log Interval       | Surface                          |                      |        |                                  |         |      |             |
| Casing Size            | 4 1/2                            |                      |        |                                  |         |      |             |
| Type Fluid             | Water                            |                      |        |                                  |         |      |             |
| Max. Recorded Temp.    | Not Recorded                     |                      |        |                                  |         |      |             |
| Estimated Cement Top   | ---                              |                      |        |                                  |         |      |             |
| Time Well Ready        | ROA                              |                      |        |                                  |         |      |             |
| Time Logger on Bottom  | 8:00                             |                      |        |                                  |         |      |             |
| Unit Number            | 200100                           |                      |        |                                  |         |      |             |
| Tool Size/ID Number    | 2.75 RADII                       |                      |        |                                  |         |      |             |
| location               | Sterling, CO                     |                      |        |                                  |         |      |             |
| Recorded By            | Scott Erb                        |                      |        |                                  |         |      |             |
| Witnessed By           | Socorro Olivas                   |                      |        |                                  |         |      |             |
| Borehole Record        |                                  | Tubing Record        |        |                                  |         |      |             |
| Run Number             | Bit                              | From                 | To     | Size                             | Weight  | From | To          |
|                        |                                  |                      |        |                                  |         |      |             |
|                        |                                  |                      |        |                                  |         |      |             |
|                        |                                  |                      |        |                                  |         |      |             |
|                        |                                  |                      |        |                                  |         |      |             |
| Casing Record          | Size                             |                      | Wgt/Ft |                                  | Top     |      | Bottom      |
| Surface String         | 8 5/8                            |                      | 24     |                                  | Surface |      | 719         |
| Prot. String           |                                  |                      |        |                                  |         |      |             |
| Production String      | 4 1/2                            |                      | 11.6   |                                  | Surface |      | Total Depth |
| Liner                  |                                  |                      |        |                                  |         |      |             |

<<< Fold Here >>>

All interpretations are opinions based on inferences from electrical or other measurements and we cannot and do not guarantee the accuracy or correctness of any interpretation, and we shall not, except in the case of gross or willful negligence on our part, be liable or responsible for any loss, costs, damages, or expenses incurred or sustained by anyone resulting from any interpretation made by any of our officers, agents or employees. These interpretations are also subject to our general terms and conditions set out in our current Price Schedule.

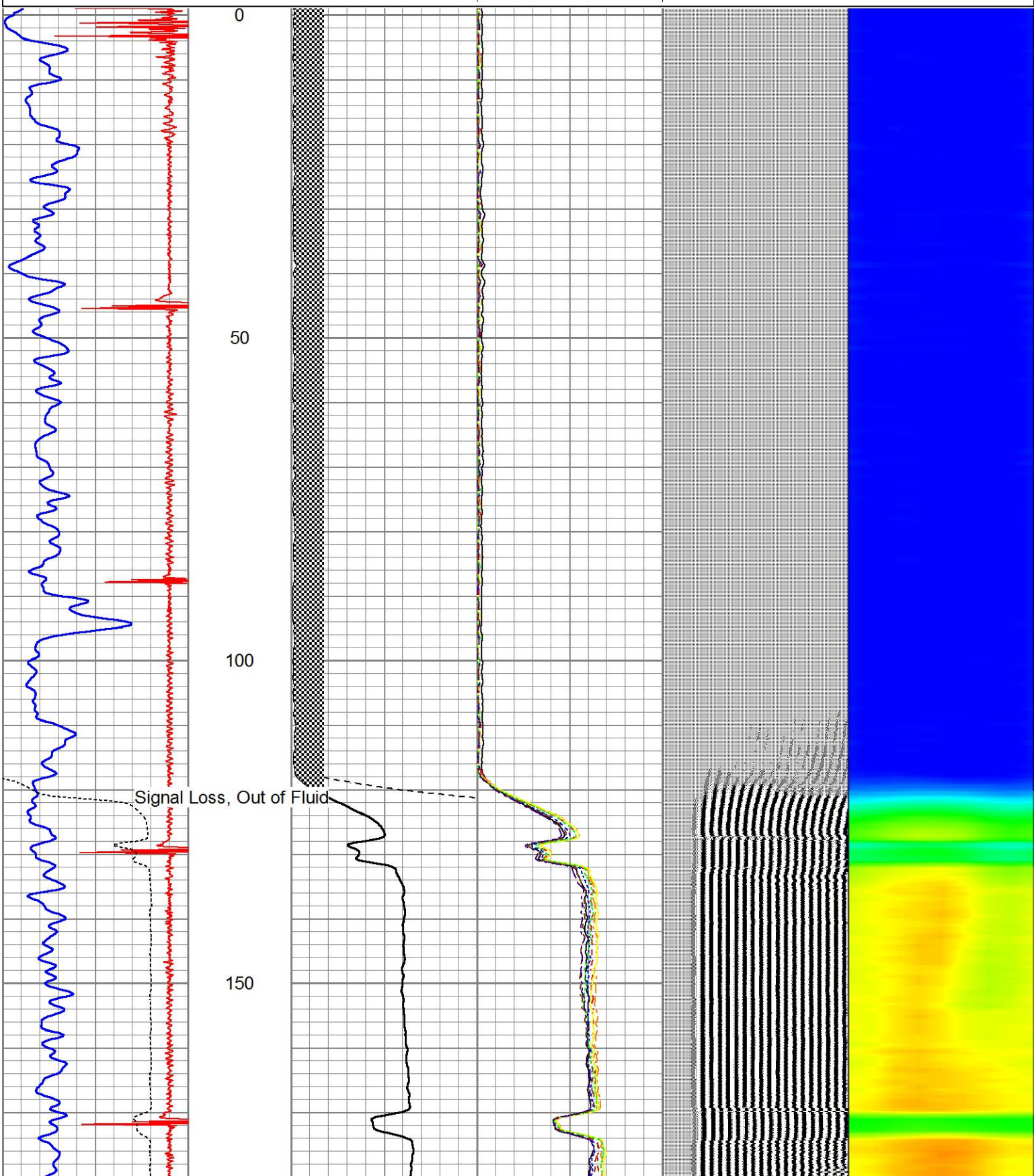
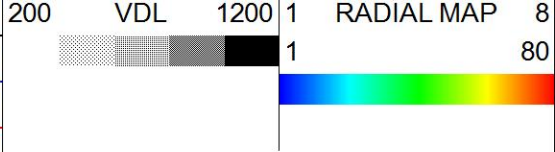
Comments

Log correlated to Brand-Dex log dated 11-24-04  
Log ran with 0 PSI wellhead pressure  
Free pipe cal @ 2321'  
Probe RADII factory service

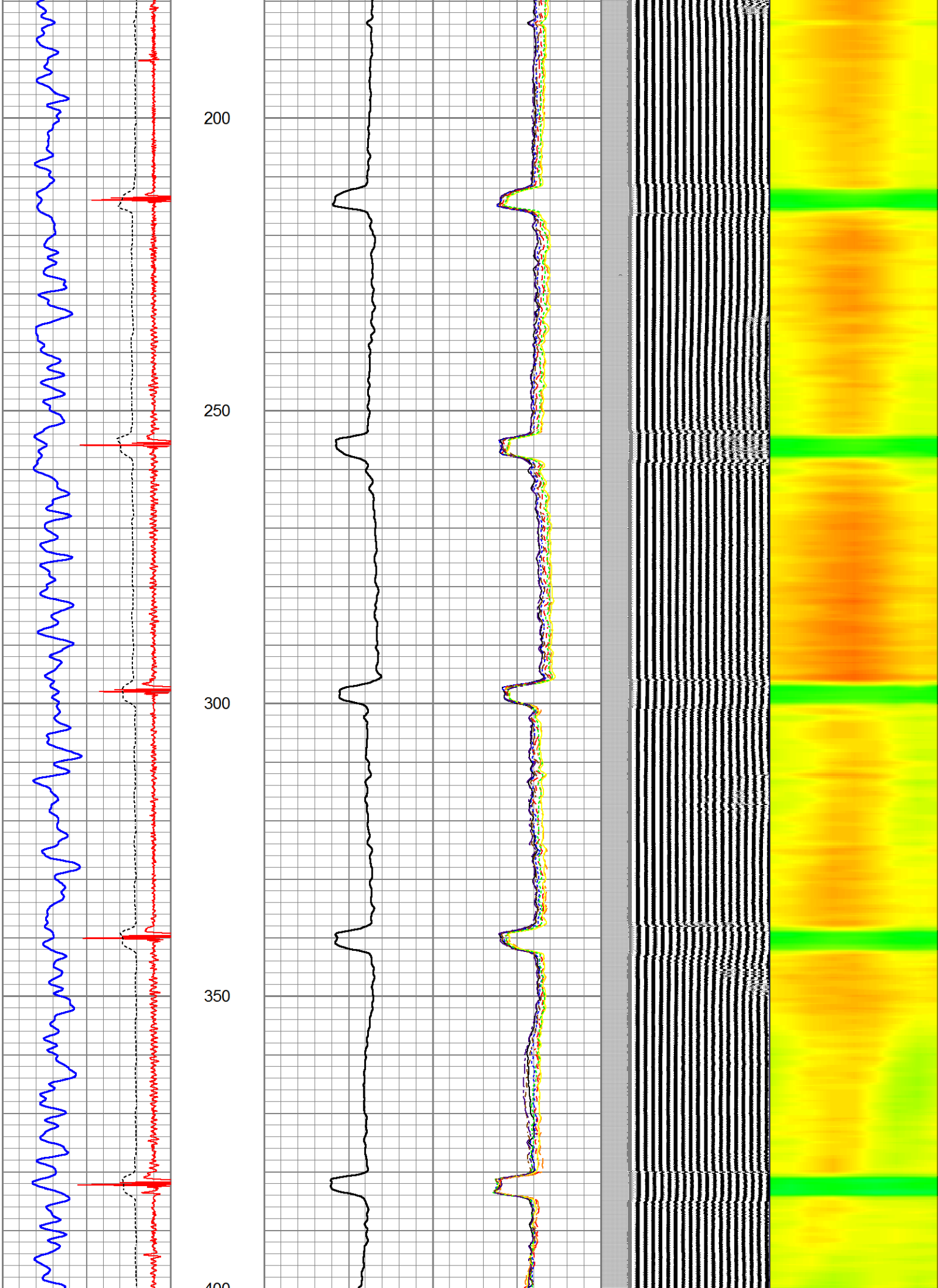
|     |            |      |
|-----|------------|------|
| 4.5 | CCL        | -0.5 |
| 0   | GR (GAPI)  | 150  |
| 320 | TT3 (usec) | 220  |

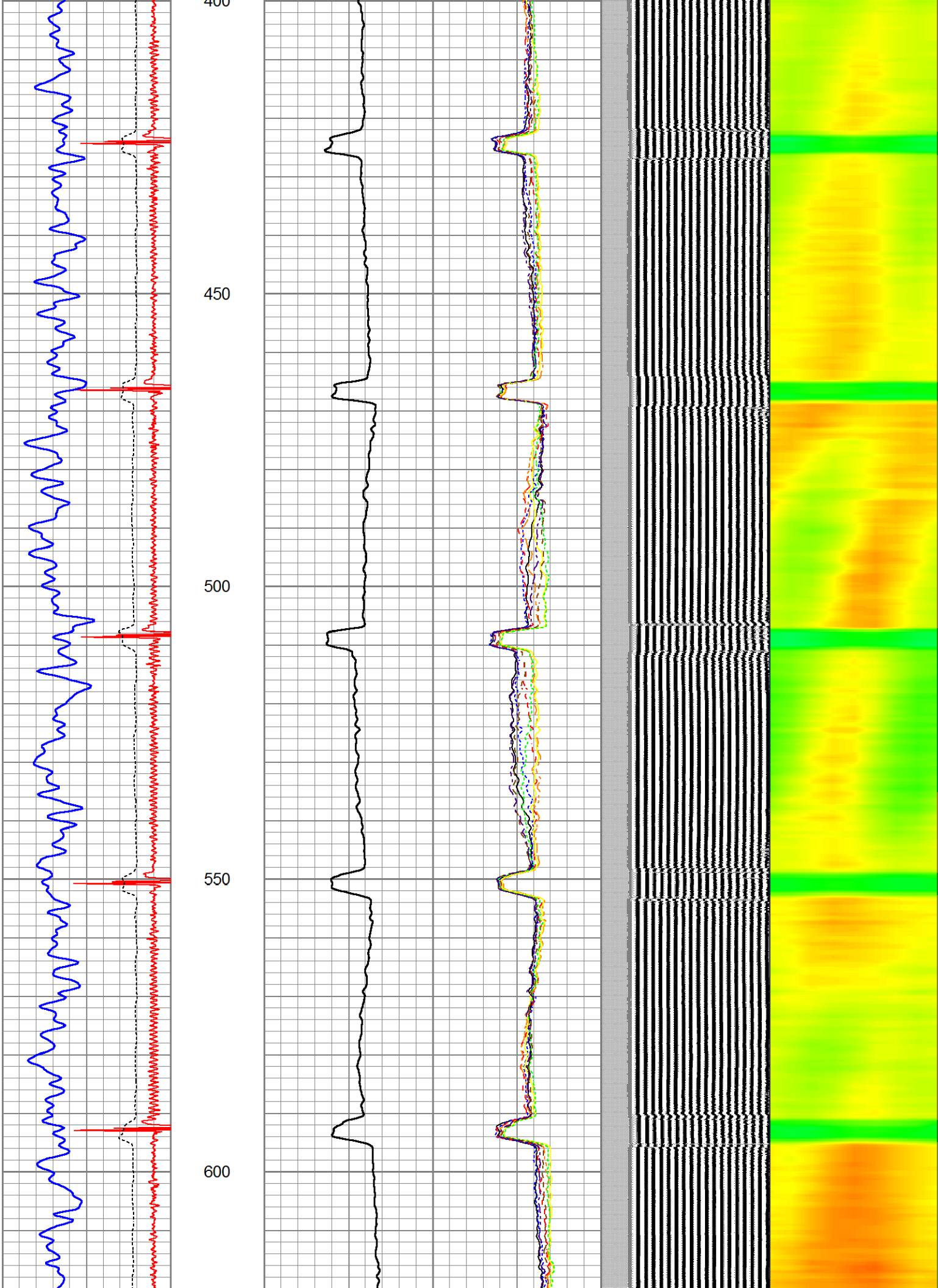
|   |                |     |
|---|----------------|-----|
| 0 | AMP (mV)       | 100 |
| 0 | AMPLIFIED AMP3 | 20  |

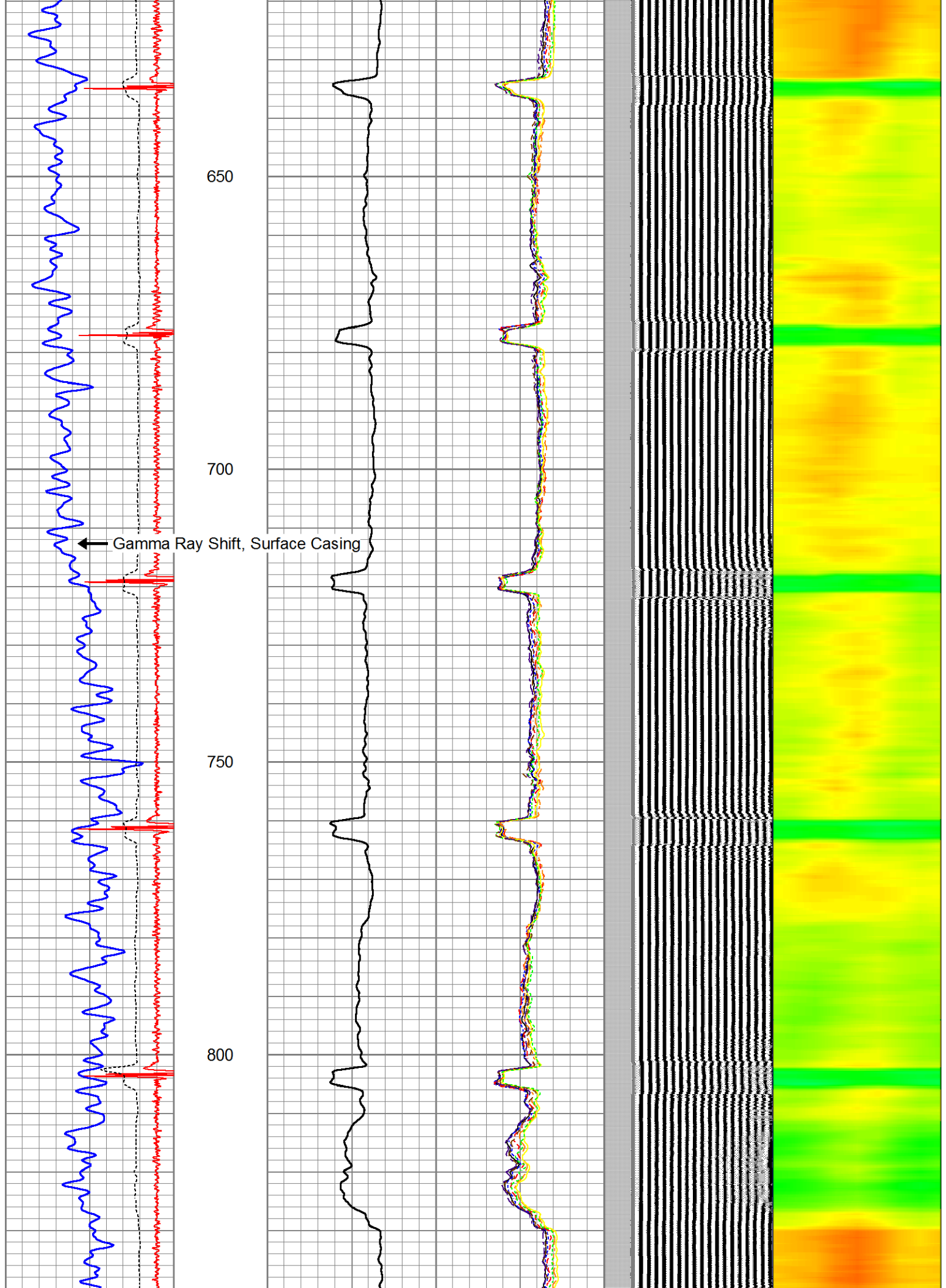
|   |       |     |
|---|-------|-----|
| 0 | AMPS1 | 100 |
| 0 | AMPS2 | 100 |
| 0 | AMPS3 | 100 |
| 0 | AMPS4 | 100 |
| 0 | AMPS5 | 100 |
| 0 | AMPS6 | 100 |
| 0 | AMPS7 | 100 |
| 0 | AMPS8 | 100 |



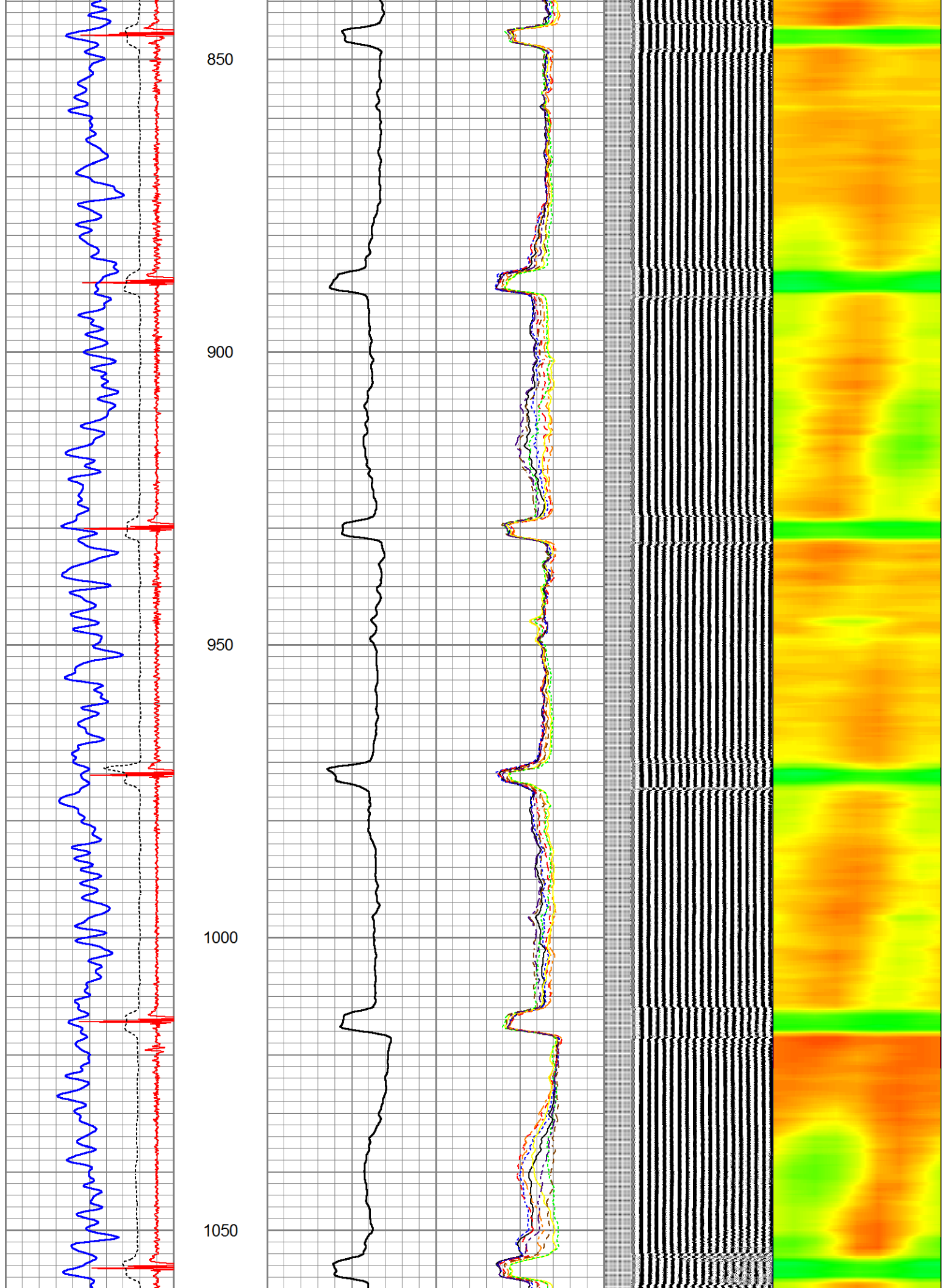


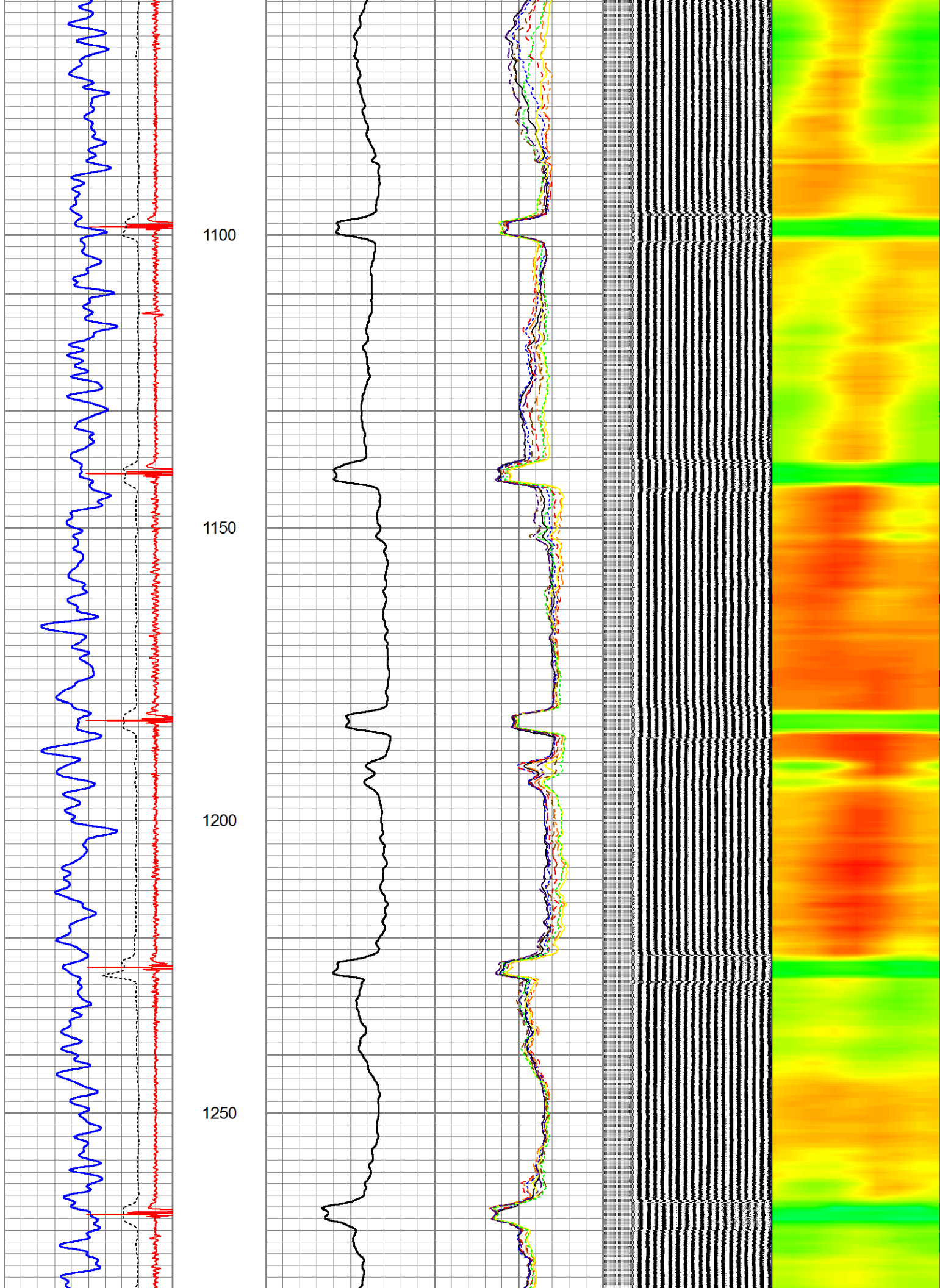


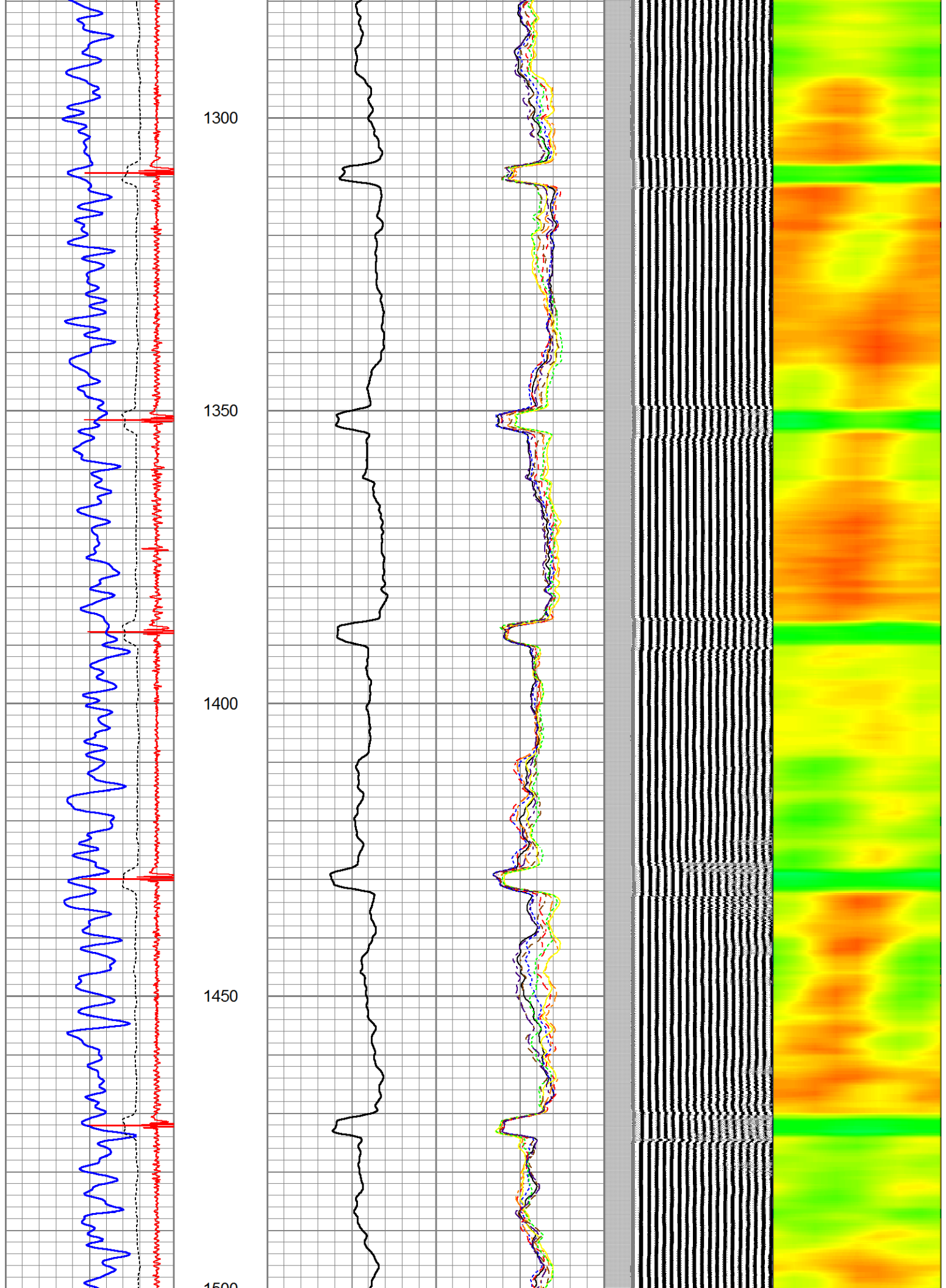




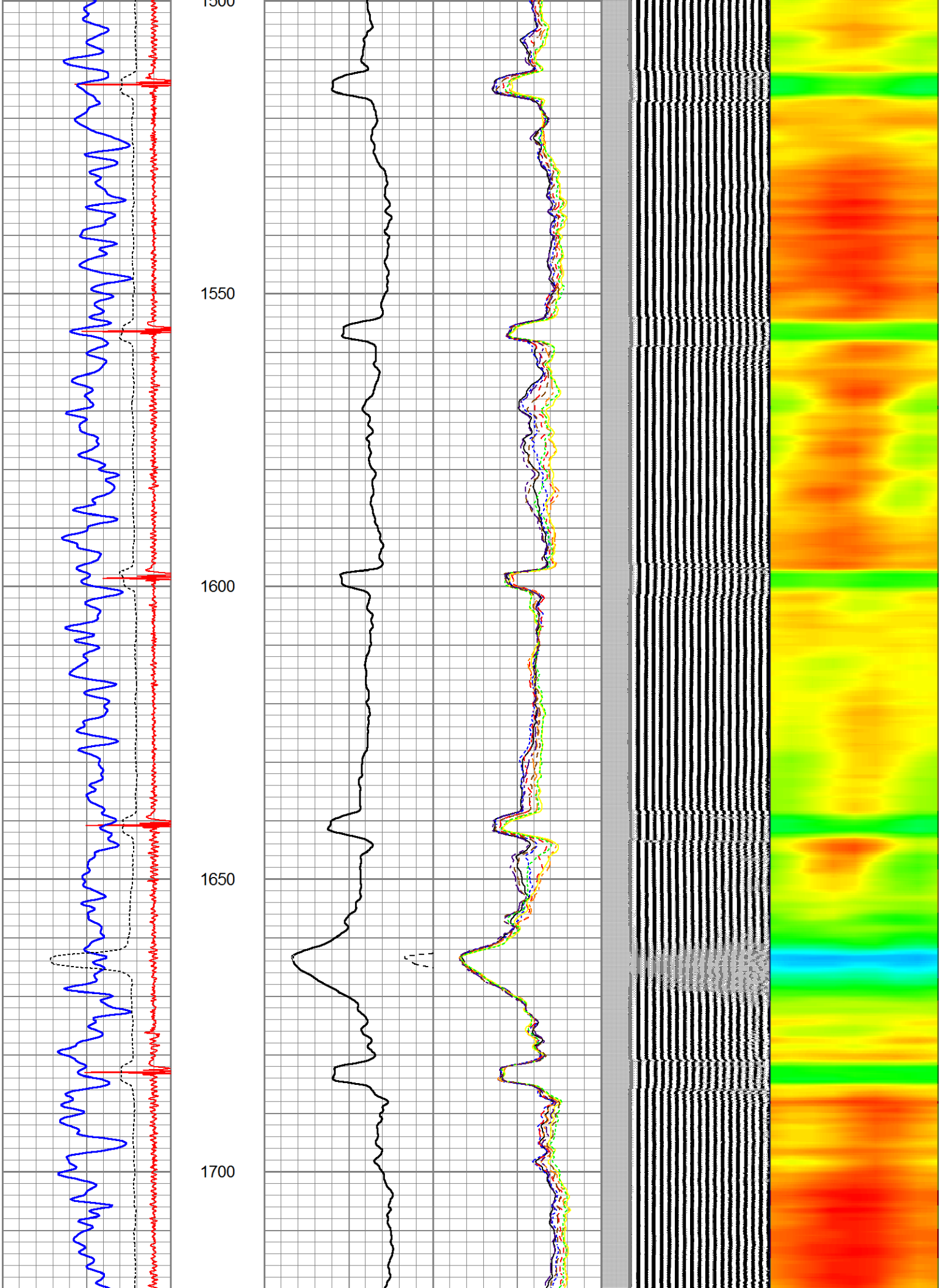


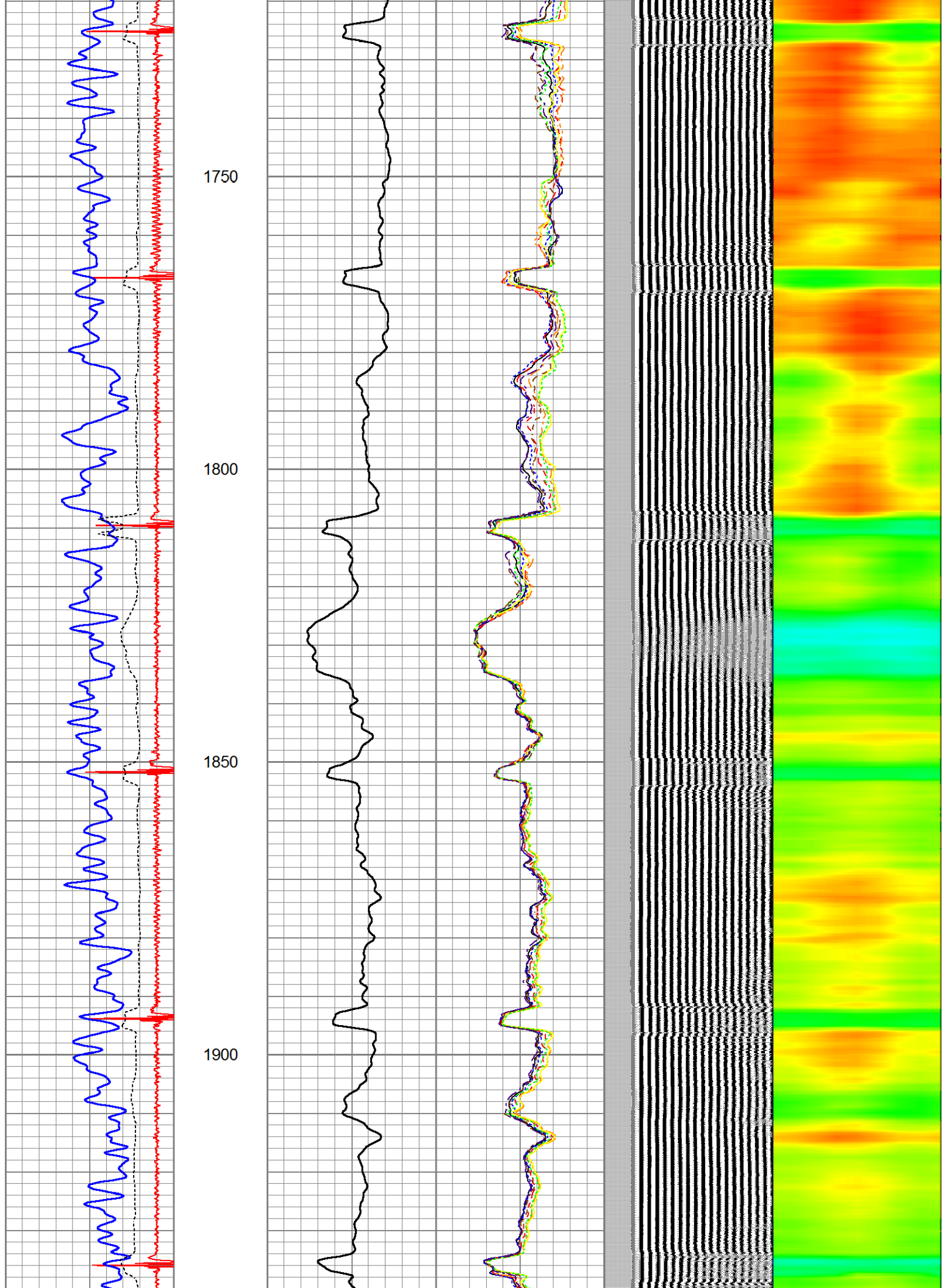




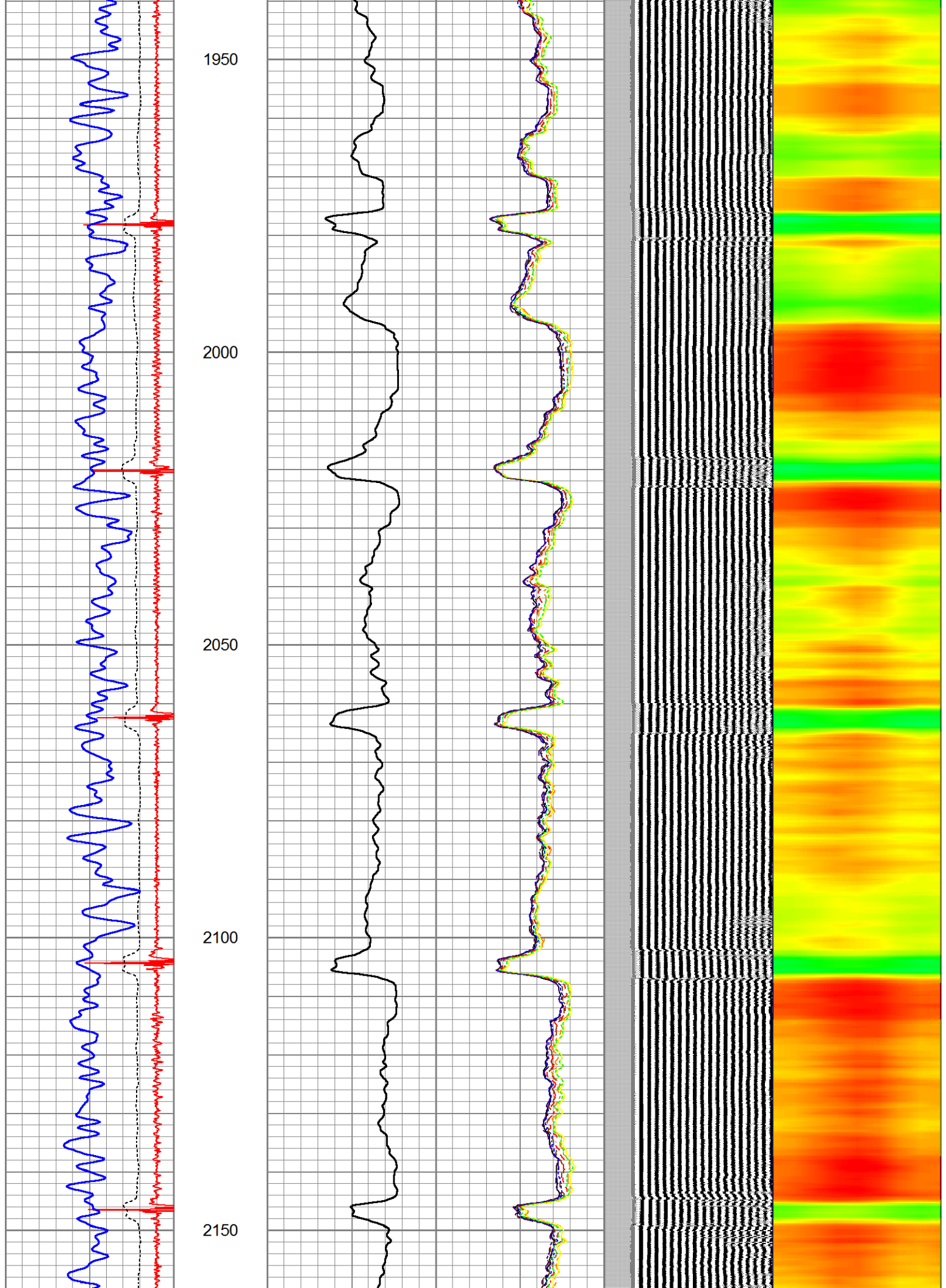


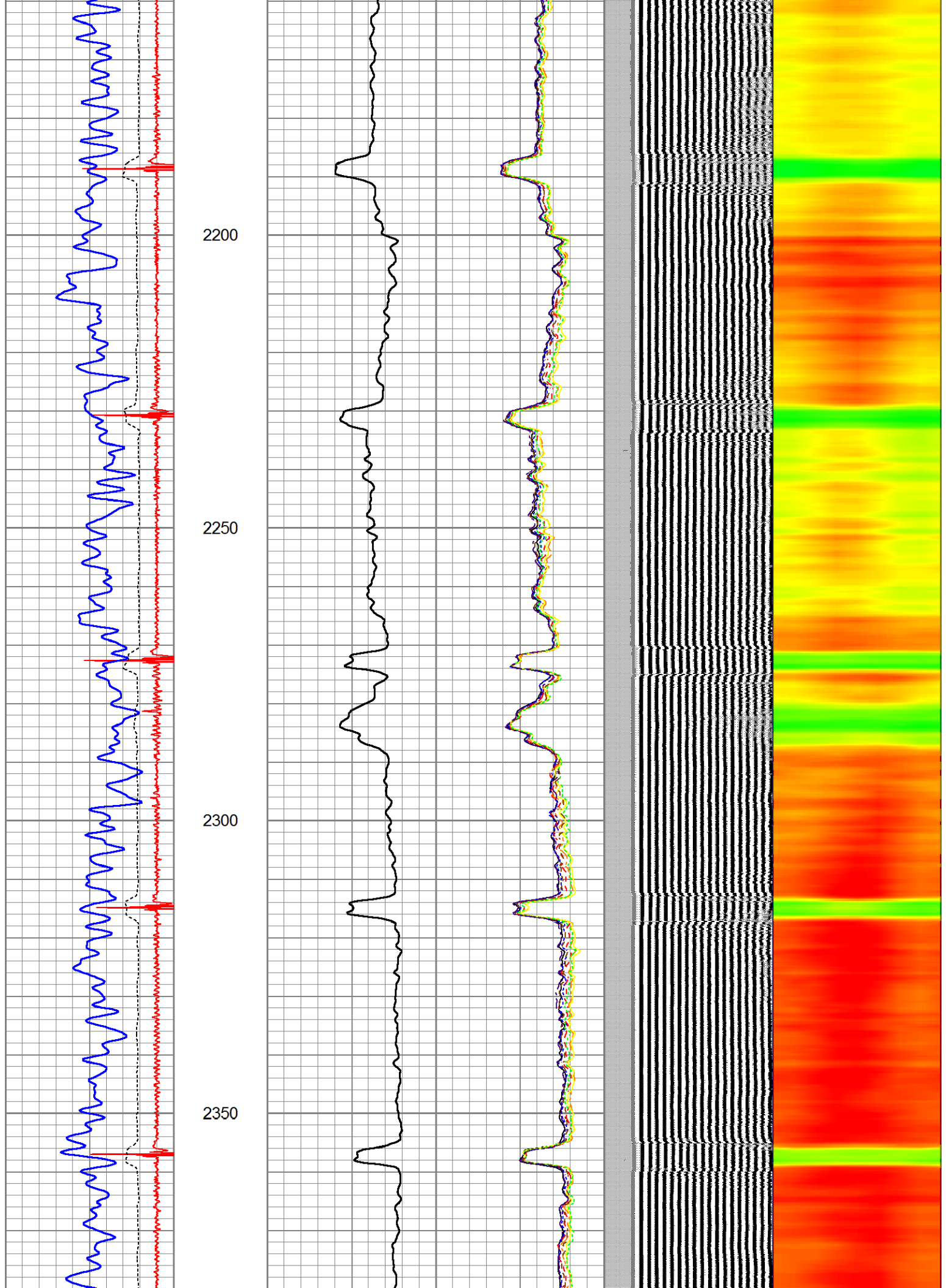




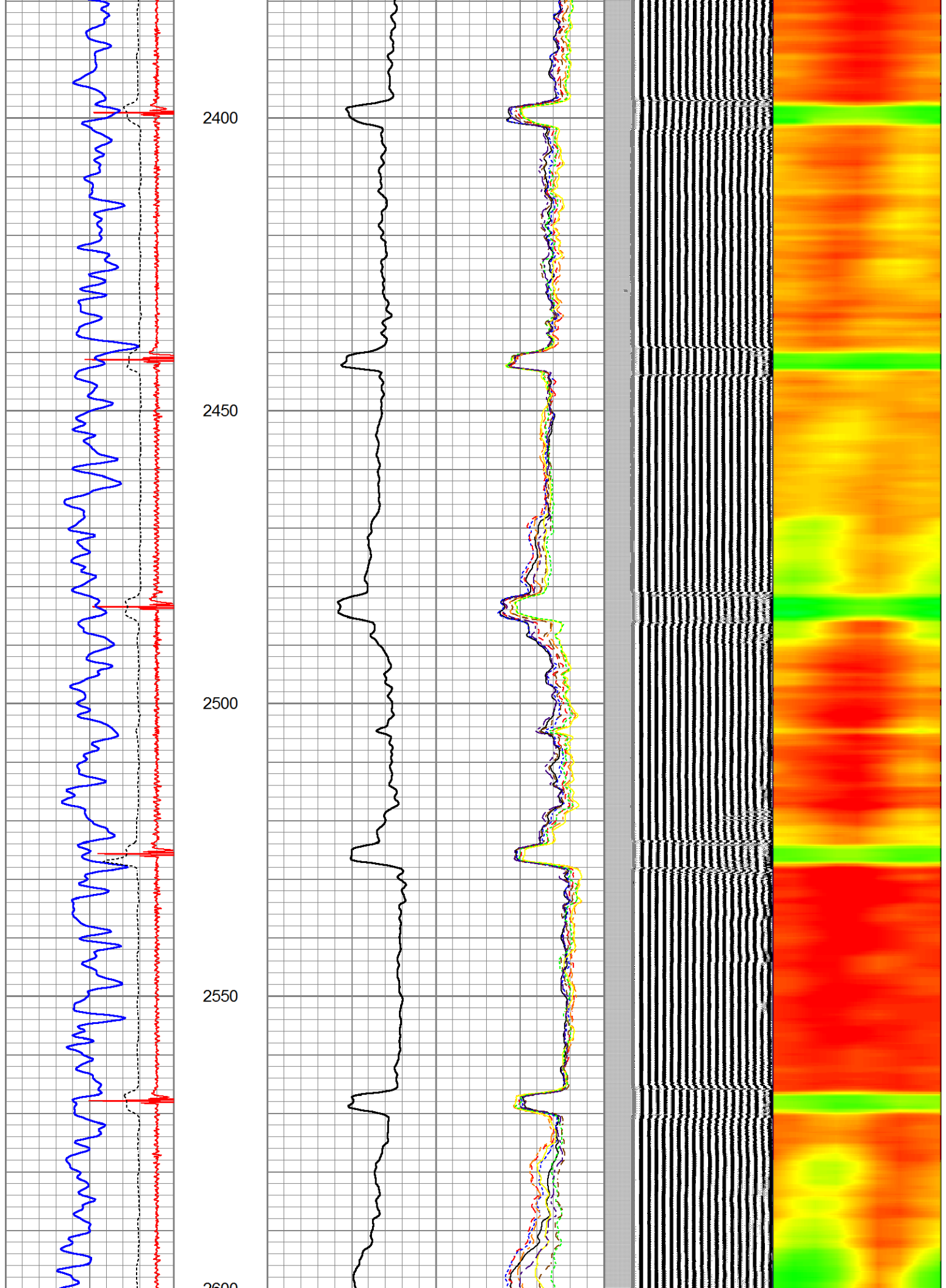


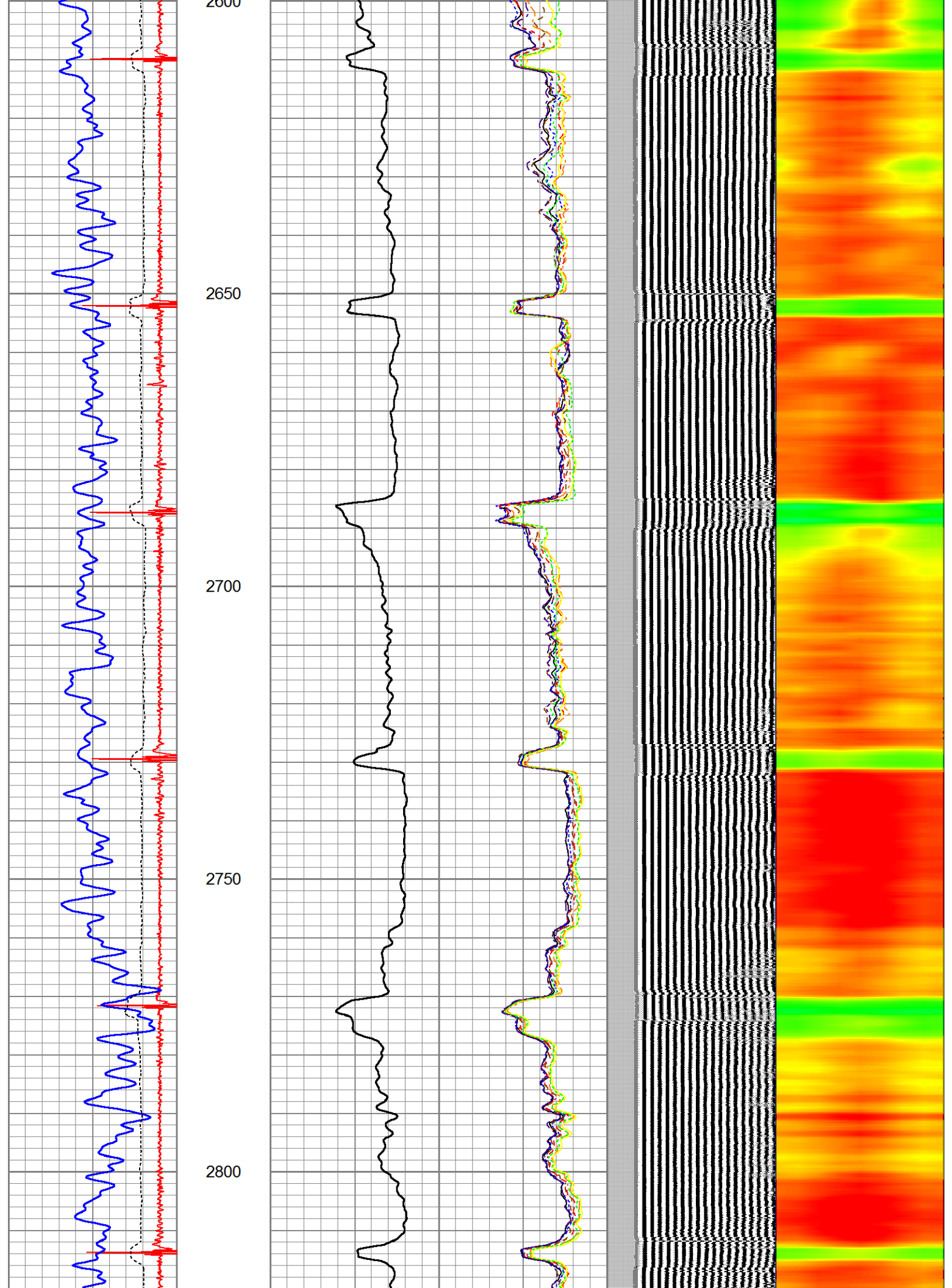




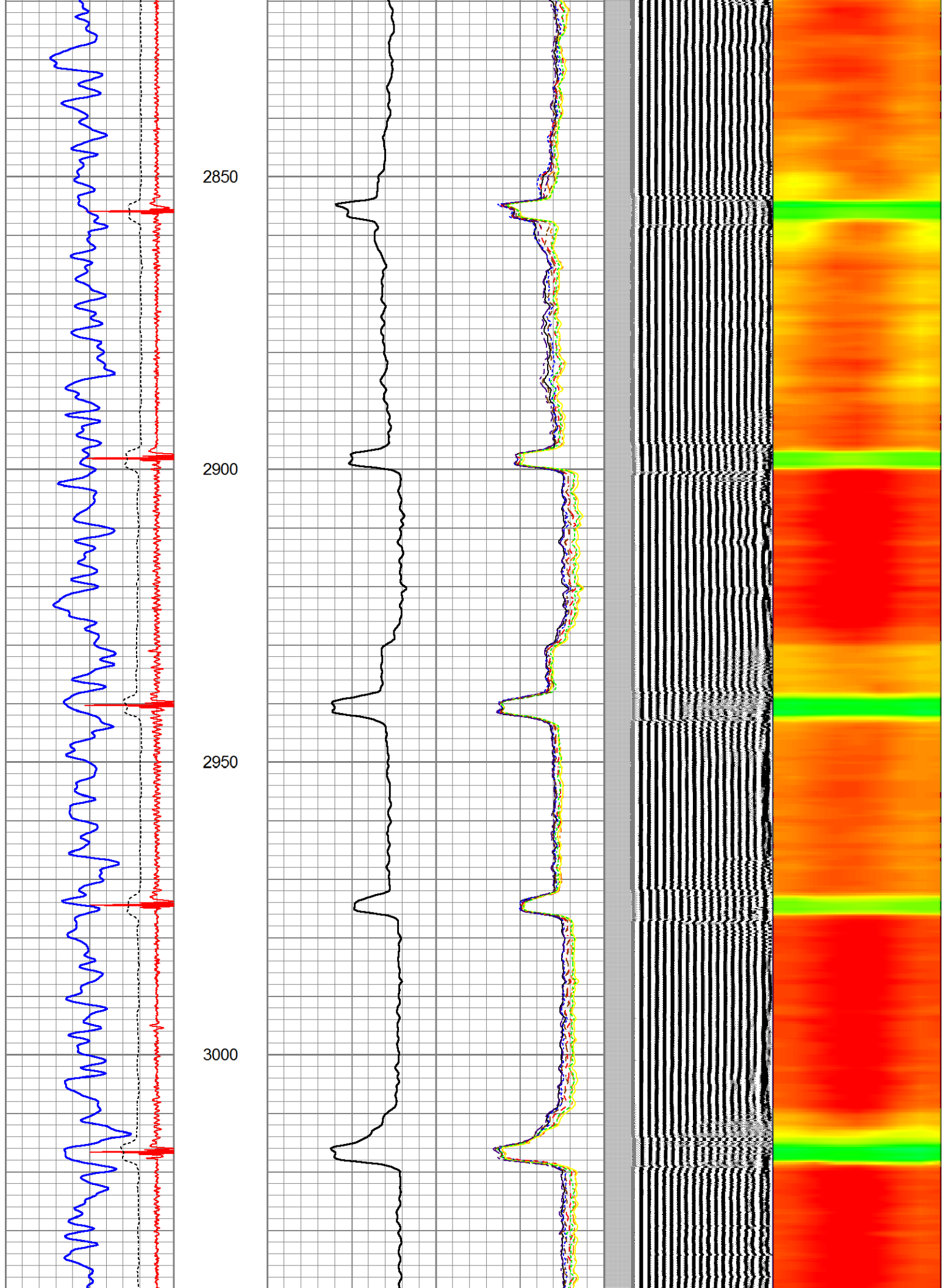


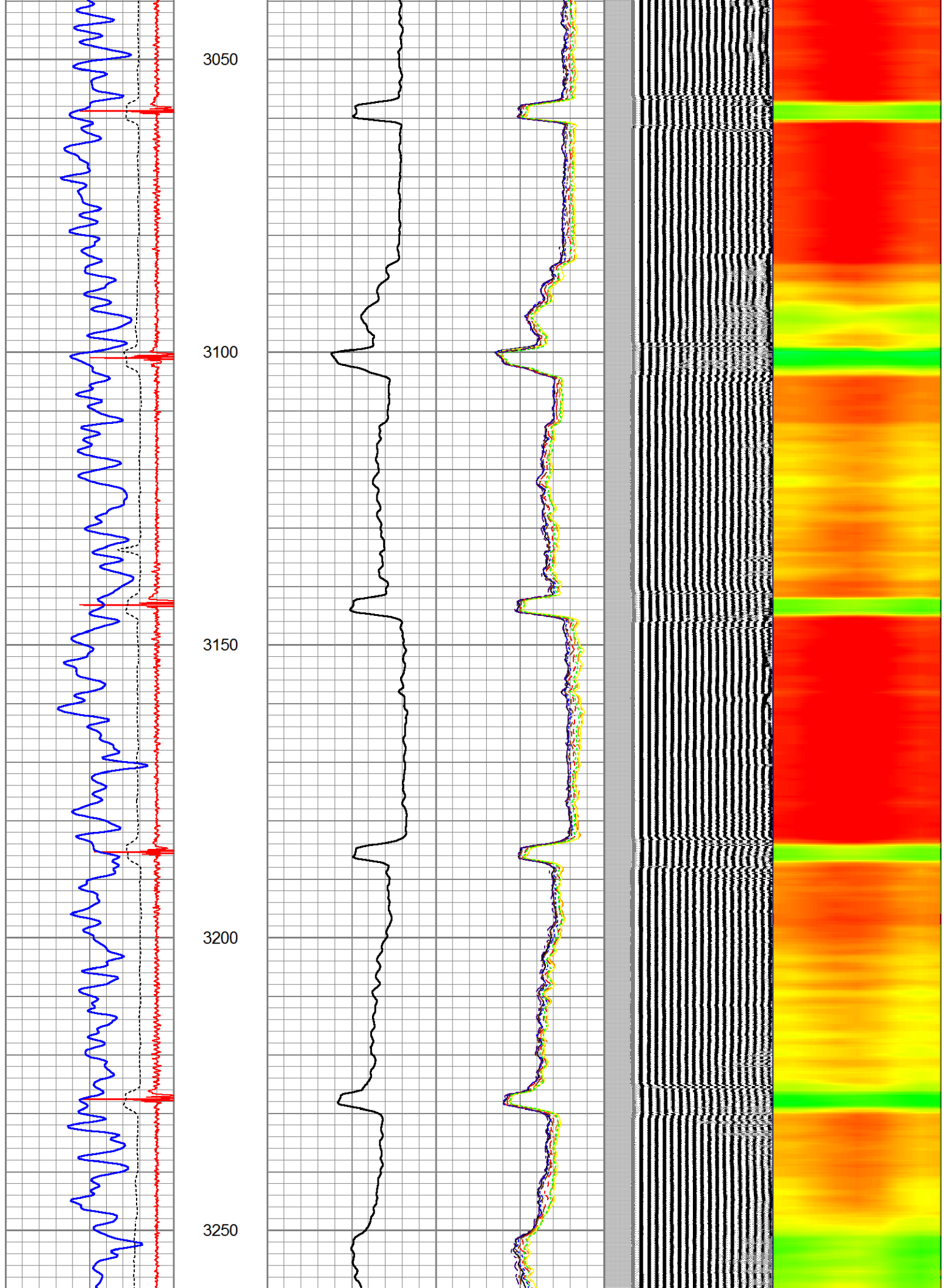


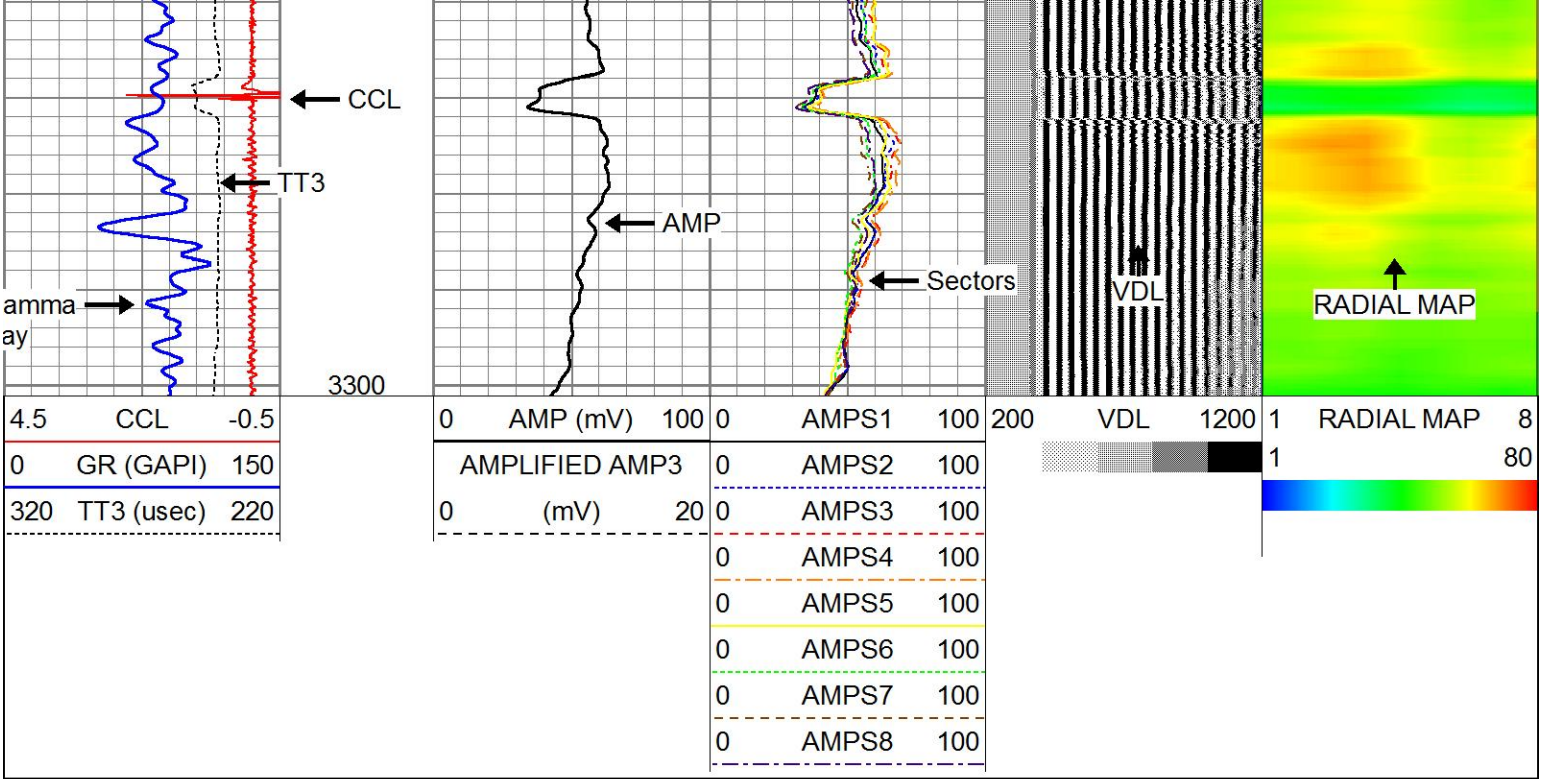












| Calibration Report                           |                          |                          |        |     |          |  |
|--|--------------------------|--------------------------|--------|-----|----------|--|
| Database File                                | west farms 22-14.db      |                          |        |     |          |  |
| Dataset Pathname                             | pass57                   |                          |        |     |          |  |
| Dataset Creation                             | Fri Feb 02 08:17:46 2024 |                          |        |     |          |  |
| Gamma Ray Calibration Report                 |                          |                          |        |     |          |  |
| Type / Serial:                               |                          | Probe275dig / 101010     |        |     |          |  |
| SHOP CALIBRATION                             |                          | Wed Feb 27 07:52:48 2013 |        |     |          |  |
|  | Counts/Sec.              | Gain                     | Offset | Jig | Units    |  |
| Background                                   | 0.0                      |                          |        |     | cps      |  |
| Calibrator                                   | 1.0                      |                          |        |     | cps      |  |
|  |                          | 0.6500                   |        |     | GAPI/cps |  |
| PRIMARY VERIFICATION                         |                          |                          |        |     |          |  |
| Background                                   | 0.0                      |                          |        |     | cps      |  |
| Calibrator                                   | 0.0                      |                          |        |     | cps      |  |
| Difference                                   |                          |                          |        | 0.0 | GAPI     |  |
| BEFORE SURVEY VERIFICATION                   |                          |                          |        |     |          |  |
| Background                                   | 0.0                      |                          |        |     | cps      |  |
| Calibrator                                   | 0.0                      |                          |        |     | cps      |  |
| Difference                                   |                          |                          |        | 0.0 | GAPI     |  |
| AFTER SURVEY VERIFICATION                    |                          |                          |        |     |          |  |
| Background                                   | 0.0                      |                          |        |     | cps      |  |
| Calibrator                                   | 0.0                      |                          |        |     | cps      |  |
| Difference                                   |                          |                          |        | 0.0 | GAPI     |  |
| Segmented Cement Bond Log Calibration Report |                          |                          |        |     |          |  |

|                              |             |
|------------------------------|-------------|
| Serial Number:               | 101020      |
| Tool Model:                  | Probe       |
| Calibration Casing Diameter: | 4.500 in    |
| Calibration Depth:           | 2321.292 ft |



Master Calibration, performed Fri Feb 02 07:54:29 2024:

|     | Raw (v) |       | Calibrated (mv) |        | Results |        |
|-----|---------|-------|-----------------|--------|---------|--------|
|     | Zero    | Cal   | Zero            | Cal    | Gain    | Offset |
| 3'  | -0.013  | 0.691 | 1.000           | 81.196 | 113.926 | 2.439  |
| CAL | -0.012  | 0.914 |                 |        |         |        |
| 5'  | -0.013  | 0.611 | 1.000           | 81.196 | 128.582 | 2.609  |
| SUM |         |       |                 |        |         |        |
| S1  | -0.012  | 0.729 | 0.000           | 81.196 | 109.488 | 1.351  |
| S2  | -0.013  | 0.712 | 0.000           | 81.196 | 112.025 | 1.404  |
| S3  | -0.013  | 0.692 | 0.000           | 81.196 | 115.187 | 1.441  |
| S4  | -0.012  | 0.678 | 0.000           | 81.196 | 117.538 | 1.453  |
| S5  | -0.013  | 0.672 | 0.000           | 81.196 | 118.518 | 1.510  |
| S6  | -0.012  | 0.669 | 0.000           | 81.196 | 119.191 | 1.472  |
| S7  | -0.013  | 0.679 | 0.000           | 81.196 | 117.469 | 1.476  |
| S8  | -0.013  | 0.700 | 0.000           | 81.196 | 113.948 | 1.424  |

Internal Reference Calibration, performed Tue Feb 12 12:45:01 2013:

|     | Raw (v) |       | Calibrated (v) |       | Results |        |
|-----|---------|-------|----------------|-------|---------|--------|
|     | Zero    | Cal   | Zero           | Cal   | Gain    | Offset |
| CAL | 0.000   | 0.000 | -0.012         | 0.914 | 1.000   | 0.000  |

Air Zero Calibration, performed Thu Feb 21 13:40:31 2013:

|     | Raw (v) |  | Calibrated (v) |  | Results |  |
|-----|---------|--|----------------|--|---------|--|
|     | Zero    |  | Zero           |  | Offset  |  |
| 3'  | 0.000   |  | 0.000          |  | 0.000   |  |
| 5'  | 0.000   |  | 0.000          |  | 0.000   |  |
| SUM |         |  |                |  |         |  |
| S1  | 0.000   |  | 0.000          |  | 0.000   |  |
| S2  | 0.000   |  | 0.000          |  | 0.000   |  |
| S3  | 0.000   |  | 0.000          |  | 0.000   |  |
| S4  | 0.000   |  | 0.000          |  | 0.000   |  |
| S5  | 0.000   |  | 0.000          |  | 0.000   |  |
| S6  | 0.000   |  | 0.000          |  | 0.000   |  |
| S7  | 0.000   |  | 0.000          |  | 0.000   |  |
| S8  | 0.000   |  | 0.000          |  | 0.000   |  |