

1991 Imagery (prior to well installation). Area appears to have been grass/hay



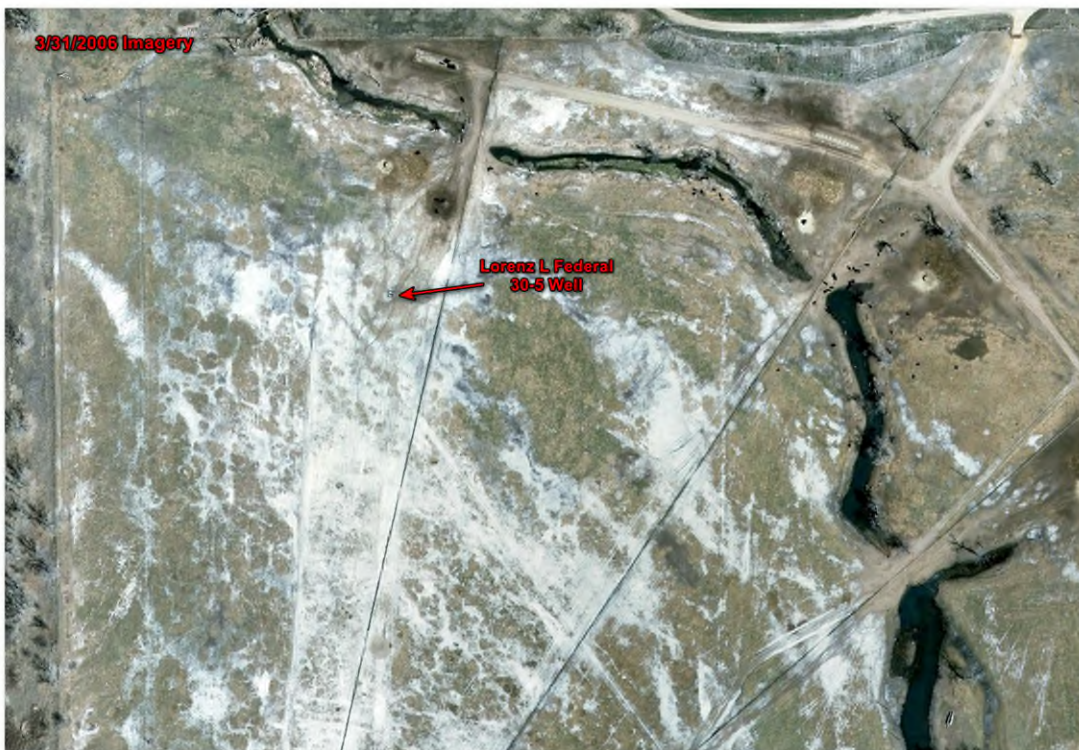
1994 Imagery (converted to livestock, paddocks installed w/ fencing and corral)



1998 Imagery (livestock operations occupy land. Alkali soils well visible in floodplain.



2006 Imagery (overall field conditions reference)

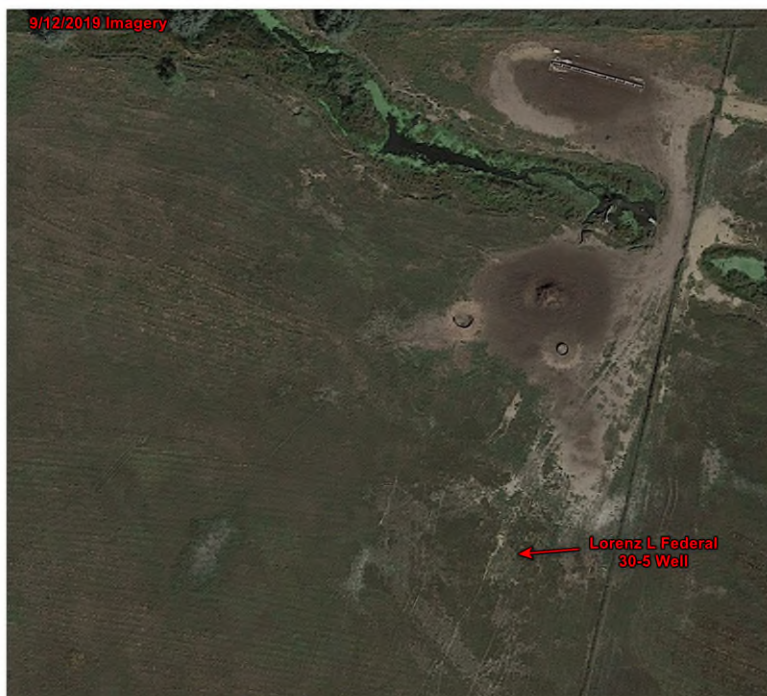




2017 Imagery (well footprint minimal, property dominated by livestock)



2019 Imagery (fields mowed (likely due to undesirable cover), resembles surrounding)



2023 Imagery (field inundated by precip and flooding; indication of Fall '23 vegetation health)

