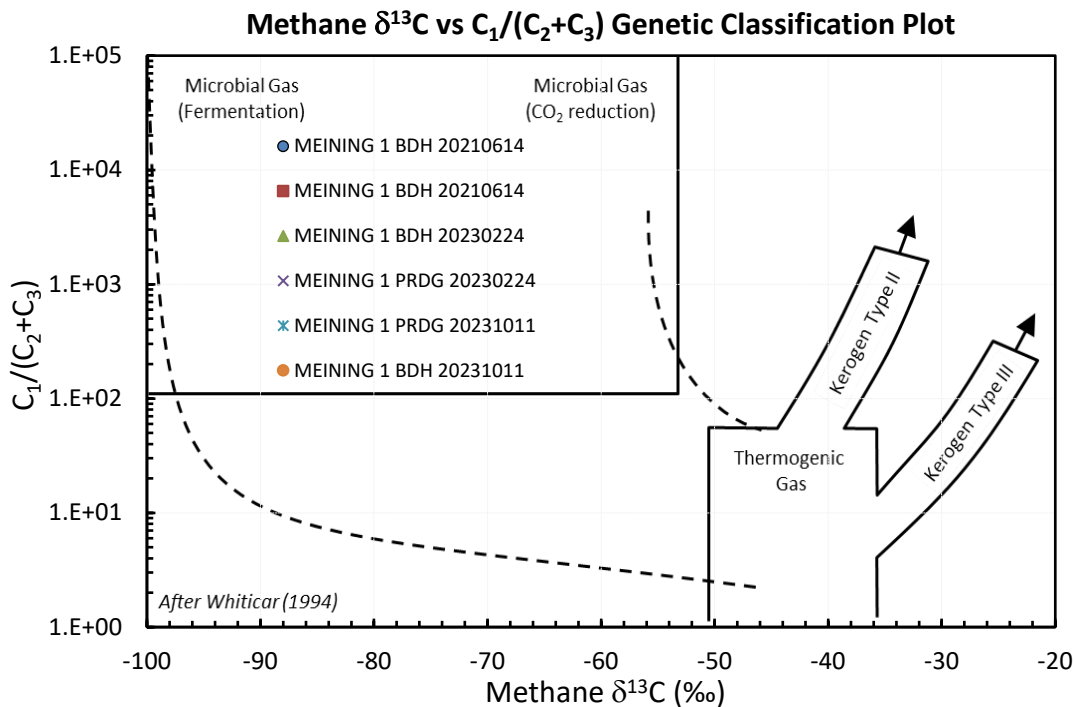
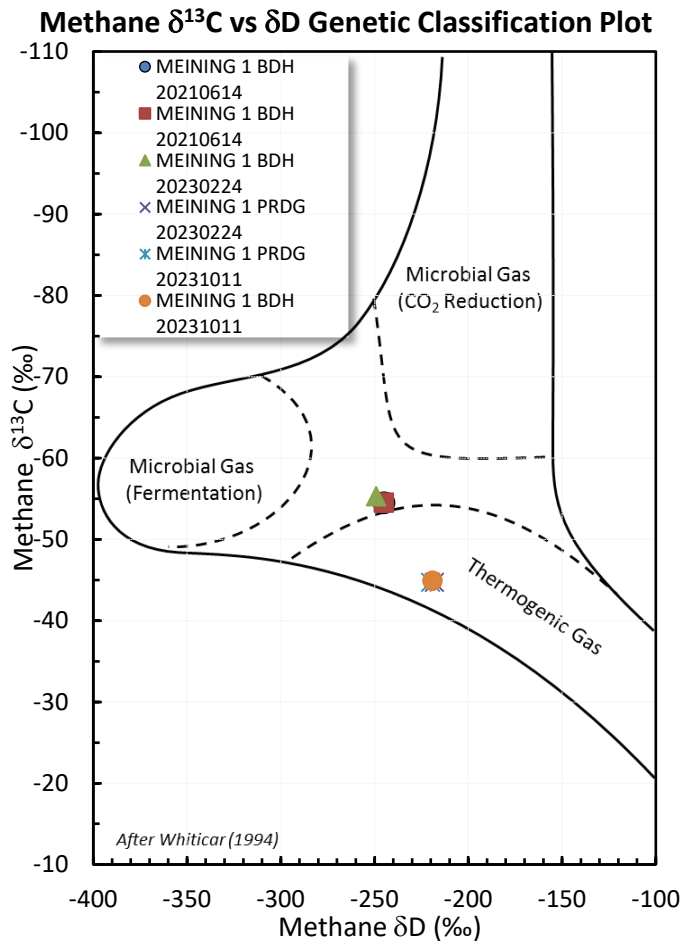
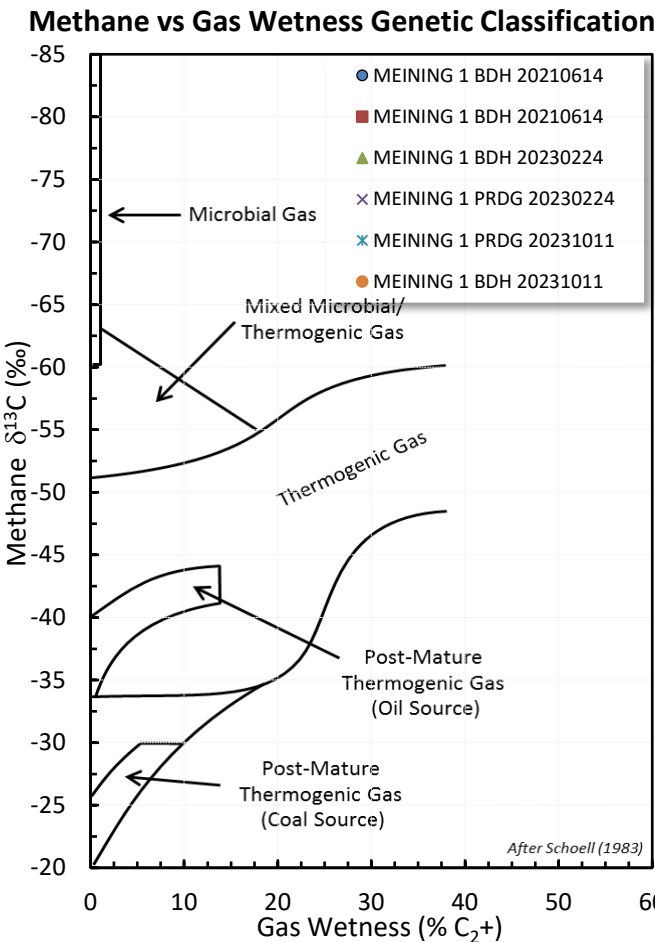
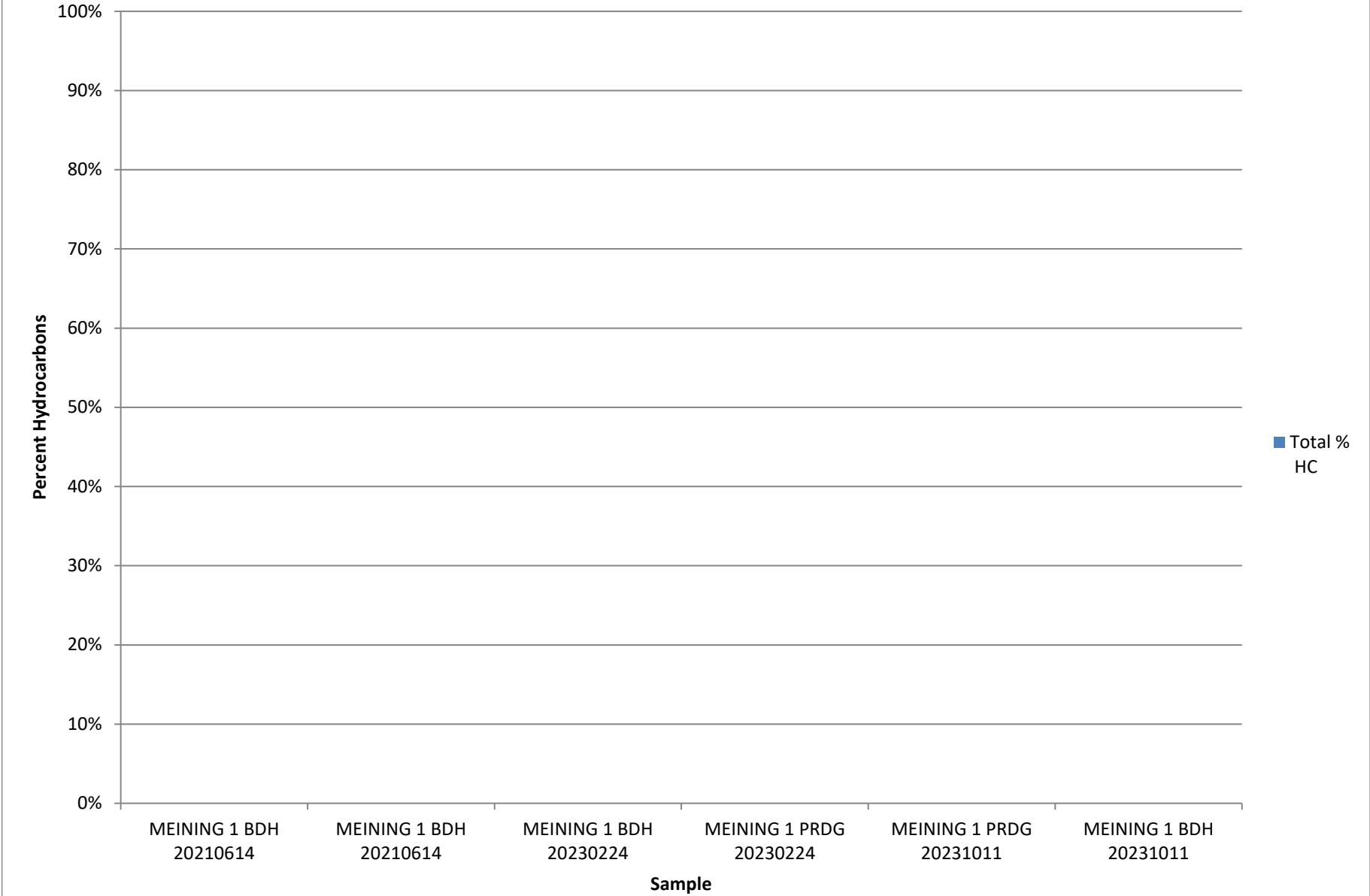


# Stable Isotope Interpretive Plots



Total Percent Hydrocarbons



**GAS COMPOSITION**

GAS COMPOSITION (MOL %)

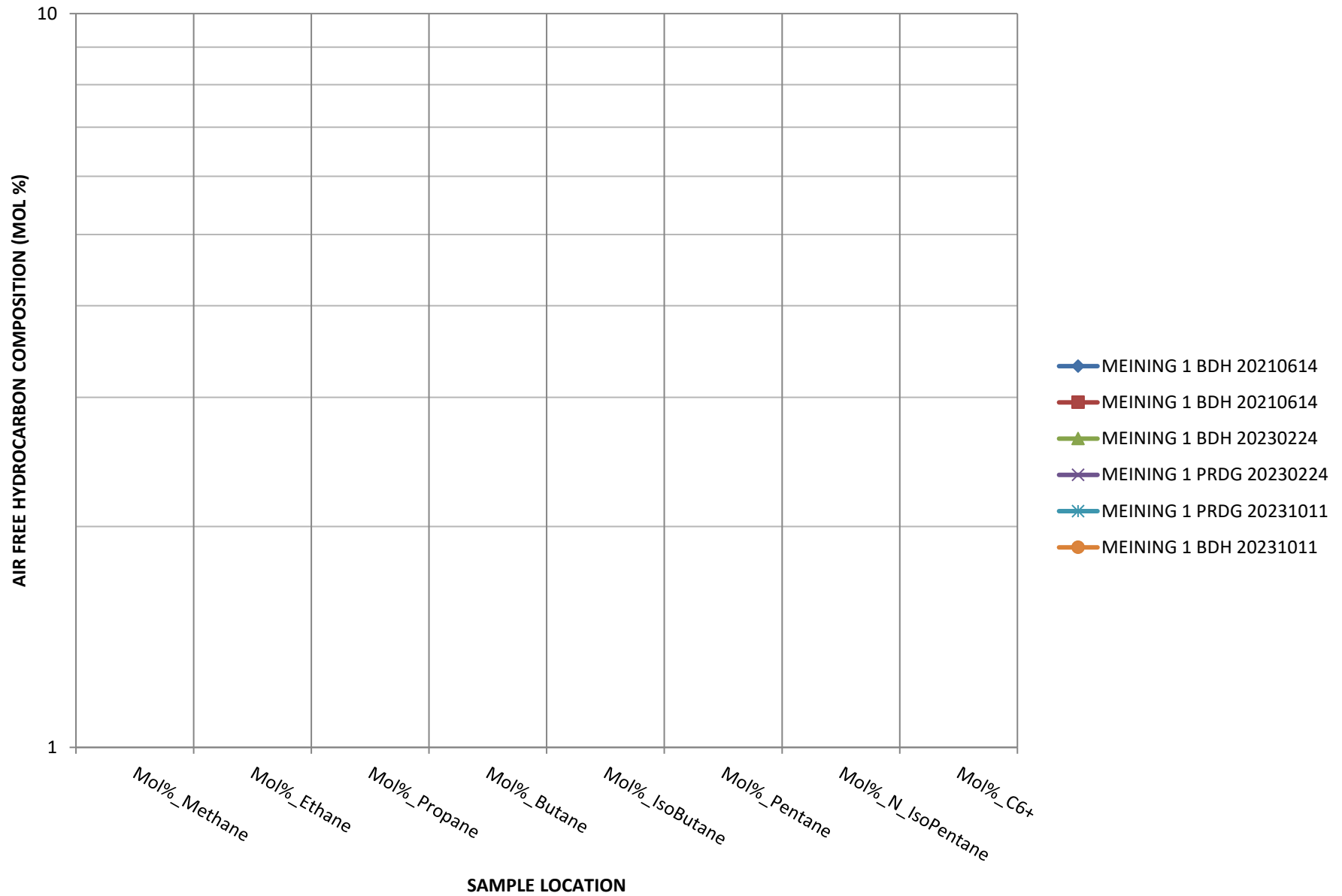
Parameter

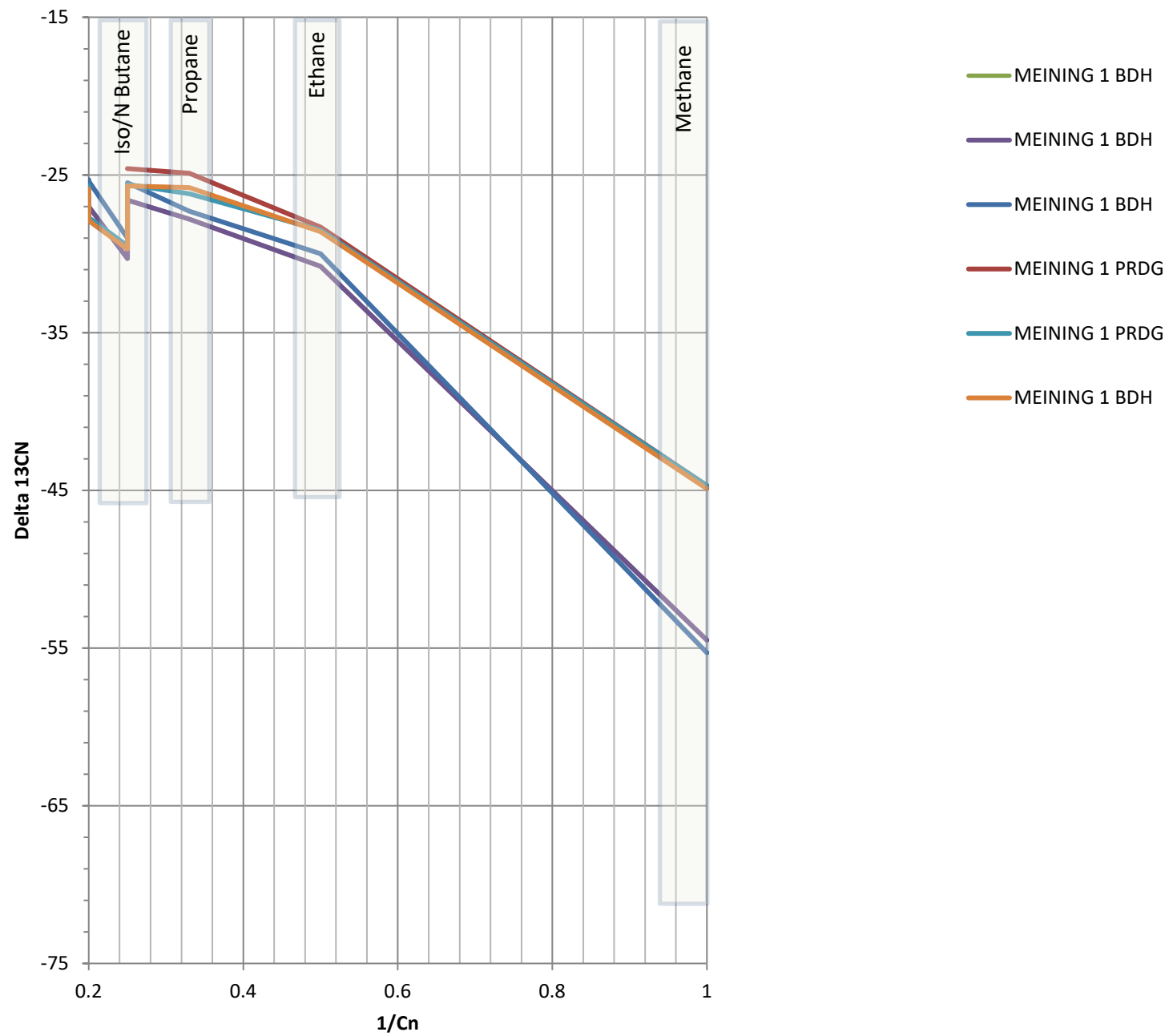
MEINING 1 BDH 20210614  
MEINING 1 BDH 20210614  
MEINING 1 BDH 20230224  
MEINING 1 PRDG 20230224  
MEINING 1 PRDG 20231011  
MEINING 1 BDH 20231011

Parameter	MEINING 1 BDH 20210614	MEINING 1 BDH 20210614	MEINING 1 BDH 20230224	MEINING 1 PRDG 20230224	MEINING 1 PRDG 20231011	MEINING 1 BDH 20231011
Mol% Nitrogen	6.0	6.0	7.0	2.0	0.7	2.5
Mol% Oxygen						
Mol% Argon	0.5	0.5	0.5	0.4	0.13	0.6
Mol% O2+AR				2.0	2.5	2.2
Mol% CarbonDioxide	0.07	0.07	0.13			
Mol% Helium				0.16		
Mol% hydrogen	85	85	80	75	70	70
Mol% Methane	2.5	2.5	2.2	11	12	12
Mol% Ethane	1.8	1.8	1.6	4.0	5.0	4.8
Mol% Propane	0.95	0.95	0.75	0.8	1.5	1.5
Mol% Butane	0.6	0.6	0.5	0.5	0.85	0.8
Mol% IsoButane	0.25	0.25	0.15	0.12	0.45	0.45
Mol% N_Pentane	0.3	0.3	0.2	0.15	0.5	0.5
Mol% IsoPentane	0.22	0.22	0.08		0.5	0.48
Mol% C6+					0.5	0.48

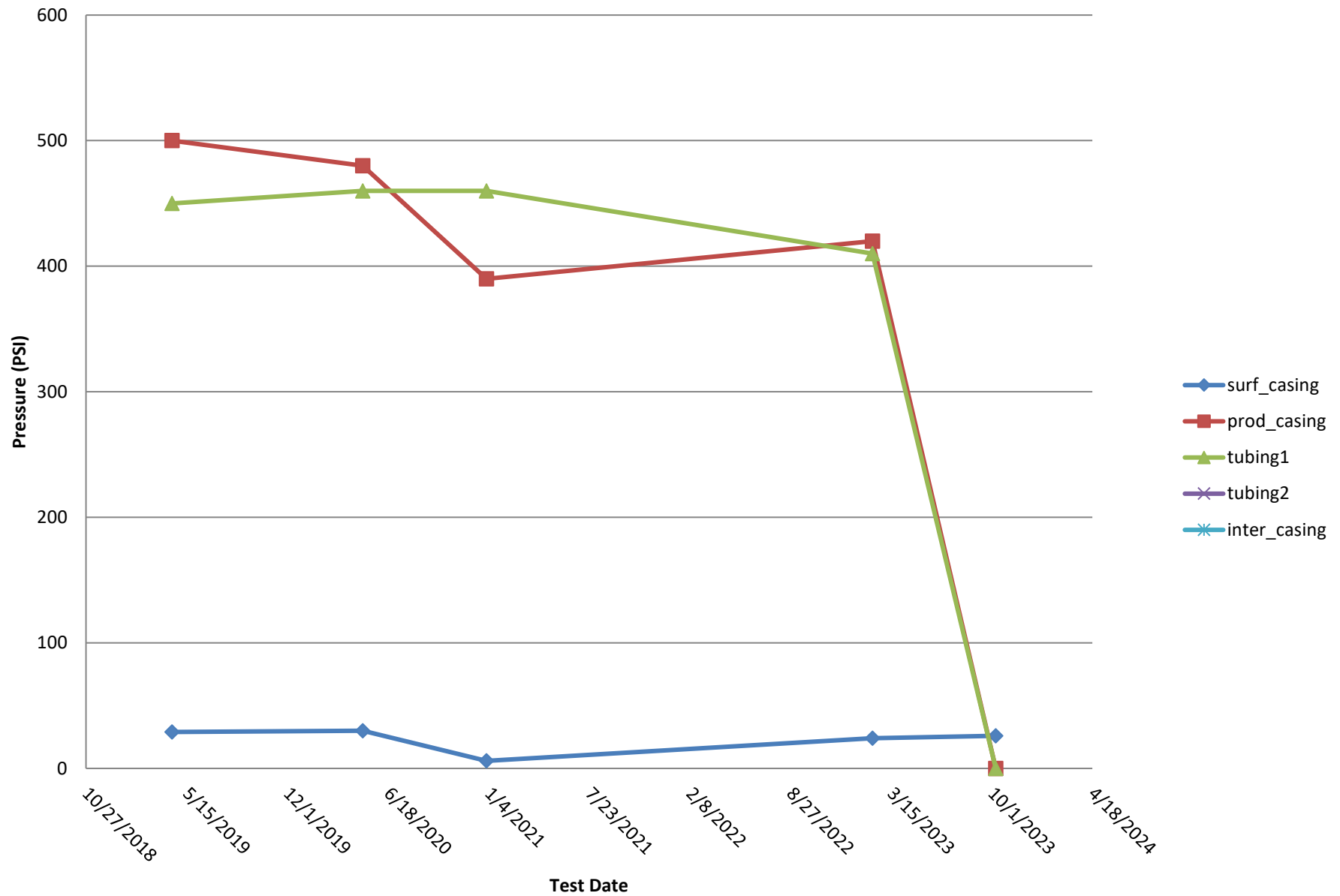
- MEINING 1 BDH 20210614
- MEINING 1 BDH 20210614
- MEINING 1 BDH 20230224
- MEINING 1 PRDG 20230224
- MEINING 1 PRDG 20231011
- MEINING 1 BDH 20231011

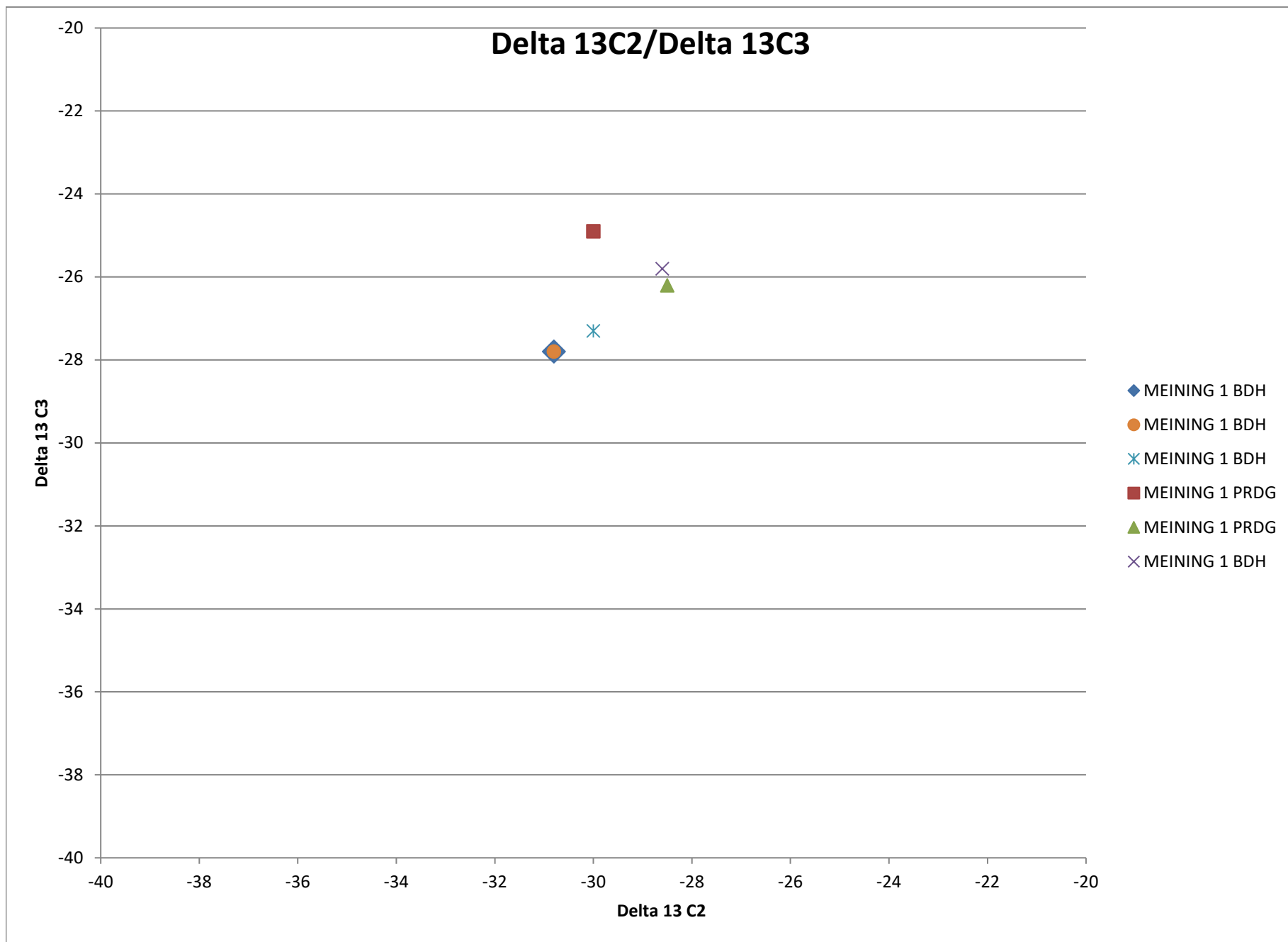
# HYDROCARBON COMPOSITION



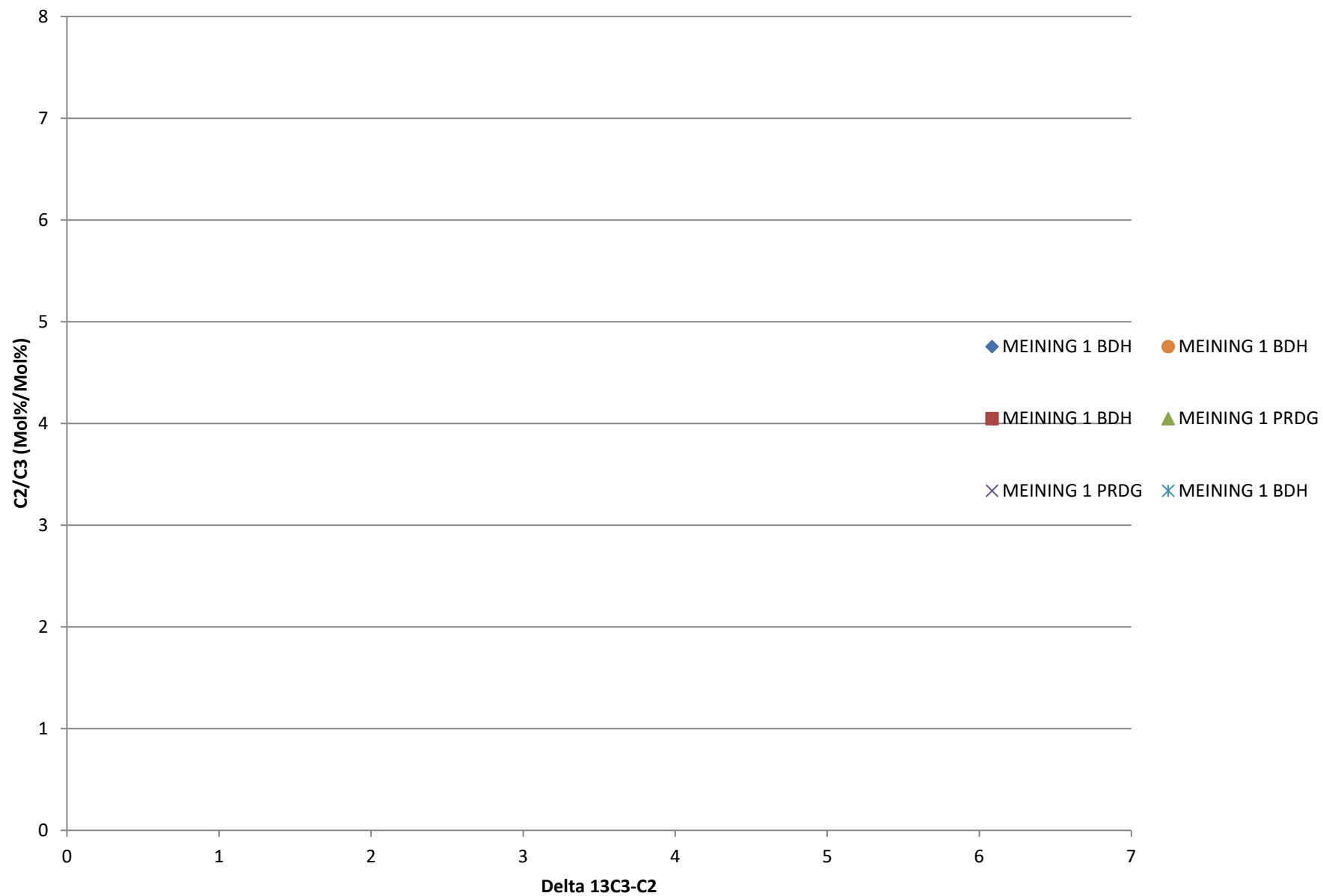


## Bradenhead Test Summary





## Delta13 C2/C3 vs. Delta 13C3-C2





## Delta 13 IC4/ Delta NC4

