



00046969

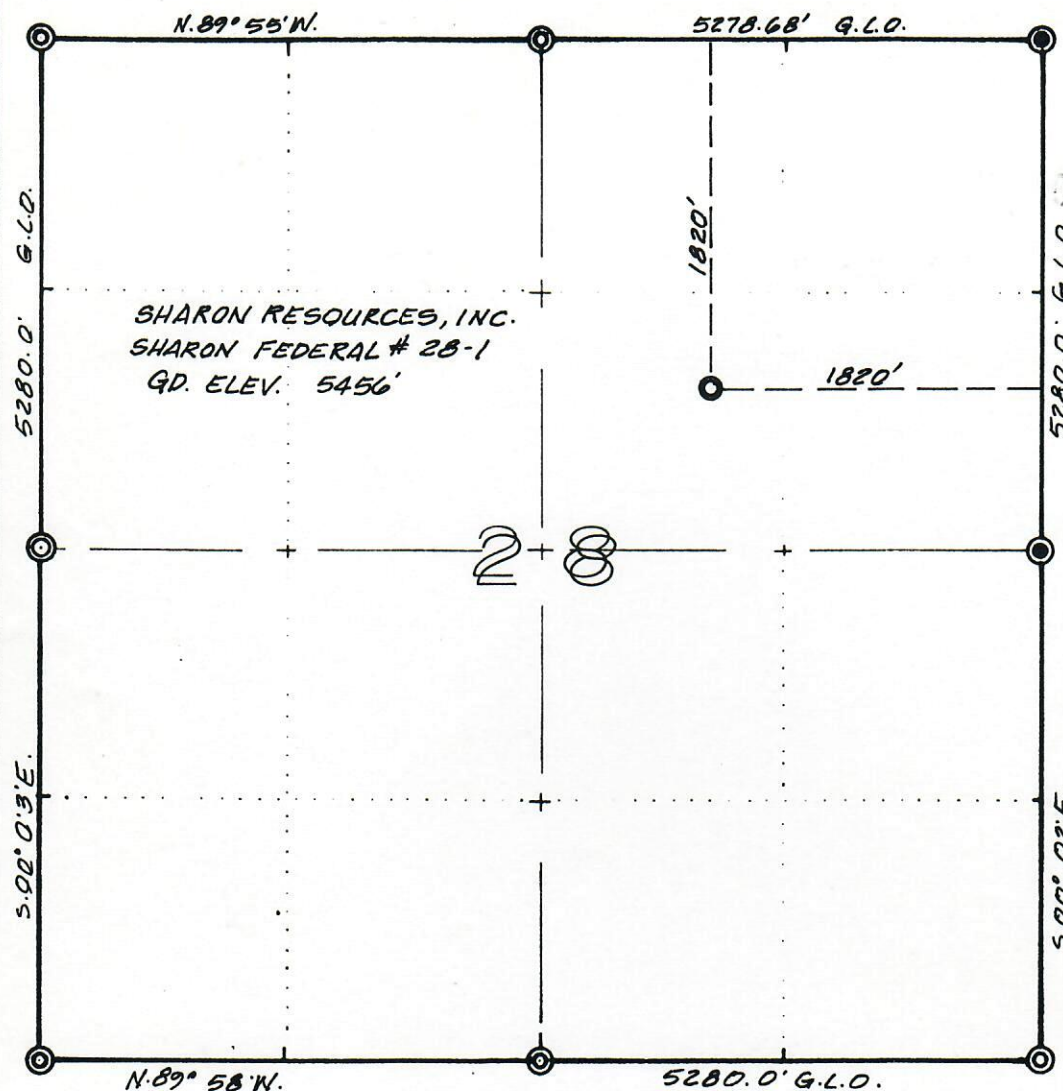
PLAT # 1

SEC. 28, T. 1N, R. 103W OF THE 6TH P.M.

RECEIVED

SEP 12 1989

COLO. OIL & GAS CONS. COMM.



SCALE

500' 0' 1000'

LEGEND

STANDARD LOCATION OF GLO SECTION CORNERS

GLO CORNERS FOUND

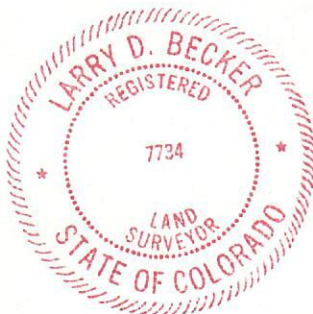
WELL LOCATION STAKED.

REFERENCE DOCUMENTS

1904 GLO PLAT

BANTY POINT, CO. QUADRANGLE, USGS

THIS WELL LOCATION PLAT WAS PREPARED FOR SHARON RESOURCES, INC.
TO LOCATE THE SHARON FED. # 28-1, 1820' F.N. L. &
1820' F.E. L. IN THE SW 1/4 NE 1/4, OF SECTION 28, T. 1N, R. 103W.
OF THE 6TH P.M. RIO BLANCO COUNTY, COLORADO



SURVEYOR'S CERTIFICATE

I, LARRY D. BECKER A REGISTERED LAND SURVEYOR IN
THE STATE OF COLORADO DO HEREBY CERTIFY THAT THIS
SURVEY WAS MADE UNDER MY DIRECT SUPERVISION
AND THAT THIS PLAT REPRESENTS SAID SURVEY.

Larry D. Becker
COLO. L.S. # 7734

SURVEYED	7.17.89
DRAWN	8.17.89
CHECKED	8.17.89

ENERGY
SURVEYS &
ENGINEERING CORP.

715 HORIZON DRIVE, SUITE 330
GRAND JUNCTION, CO 81501
(303) 246-7221

SCALE 1" = 1000'

JOB NO.

SHEET OF