

Inspection Photos

Location Name: TEP ROCKY MOUNTAIN LLC GENTRY C Pad

Location #: 311695



Photo # 1059 From entrance to location



Photo # 1060 From entrance to location

Inspection Photos

Location Name: TEP ROCKY MOUNTAIN LLC GENTRY C Pad

Location #: 311695



Photo # 1061 Location



Photo # 1062 Location



COLORADO
Oil & Gas Conservation
Commission
Department of Natural Resources

Inspection Photos

Location Name: TEP ROCKY MOUNTAIN LLC GENTRY C Pad

Location #: 311695



Photo # 1065 Location



Photo # 1066 Location

Inspection Photos
Location Name: TEP ROCKY MOUNTAIN LLC GENTRY C Pad
Location #: 311695



Photo # 1067 Meter calibration info not conspicuously posted



Photo # 1068 Meter calibration info not conspicuously posted



Inspection Photos
Location Name: TEP ROCKY MOUNTAIN LLC GENTRY C Pad
Location #: 311695



Photo # 1069 Meter calibration info not conspicuously posted



Photo # 1071 Tank label missing required information



Inspection Photos

Location Name: TEP ROCKY MOUNTAIN LLC GENTRY C Pad

Location #: 311695



Photo # 1072 Hole in liner/liner needs maintenance



Photo # 1073 Hole in liner/liner needs maintenance



Inspection Photos

Location Name: TEP ROCKY MOUNTAIN LLC GENTRY C Pad

Location #: 311695



Photo # 1074 Holes in liner/liner needs maintenance

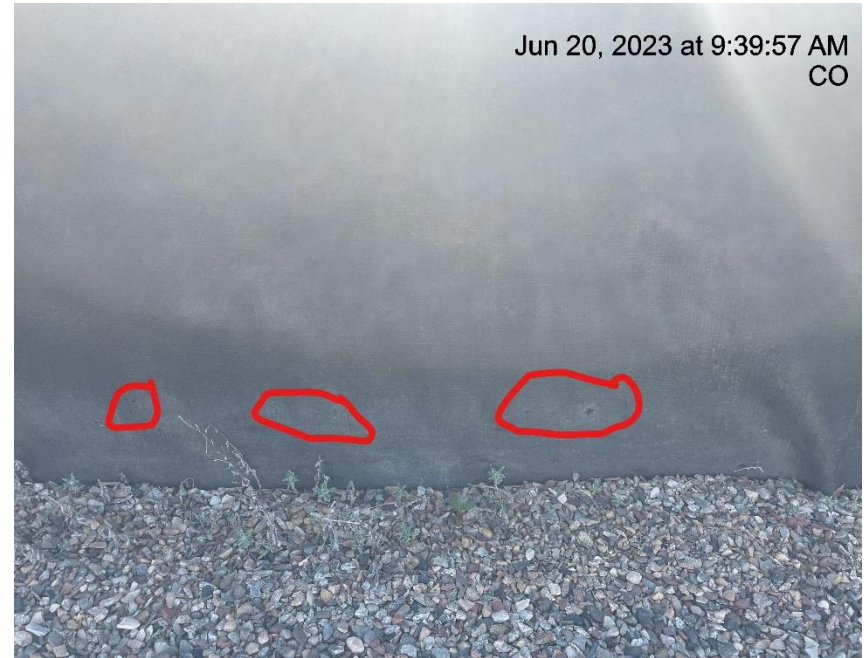


Photo # 1075 Holes in liner/liner needs maintenance

Inspection Photos

Location Name: TEP ROCKY MOUNTAIN LLC GENTRY C Pad

Location #: 311695



Photo # 1076 Holes in liner/liner needs maintenance

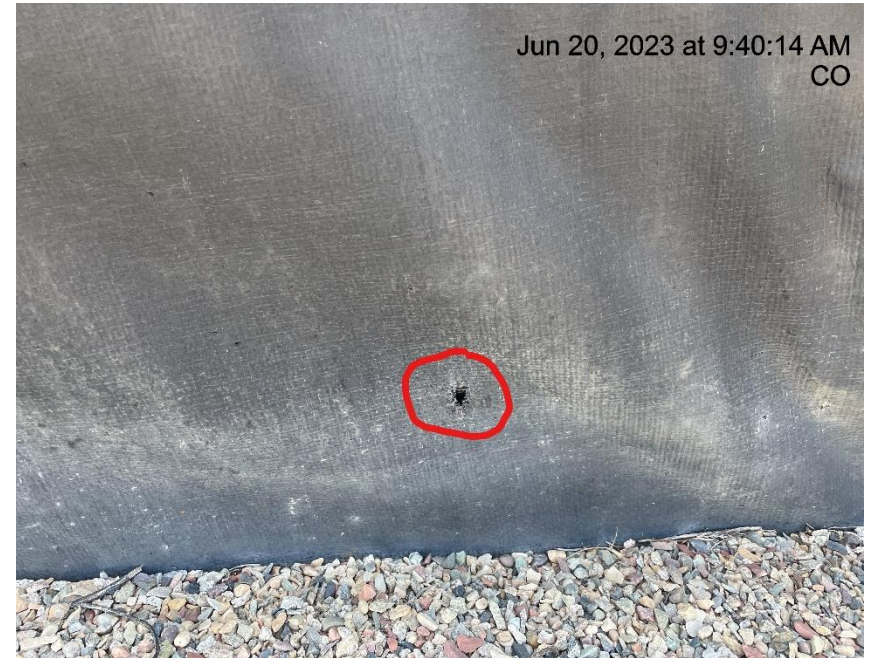


Photo # 1077 Hole in liner/liner needs maintenance

Inspection Photos

Location Name: TEP ROCKY MOUNTAIN LLC GENTRY C Pad

Location #: 311695



Photo # 1078 Hole in liner/liner needs maintenance



Photo # 1079 Hole in liner/liner needs maintenance



Inspection Photos

Location Name: TEP ROCKY MOUNTAIN LLC GENTRY C Pad

Location #: 311695



Photo # 1080 Stained gravel



Photo # 1081 Stained gravel



COLORADO
Oil & Gas Conservation
Commission
Department of Natural Resources

Inspection Photos

Location Name: TEP ROCKY MOUNTAIN LLC GENTRY C Pad

Location #: 311695



Photo # 1082 Stained gravel



Photo # 1084 Stained gravel



COLORADO
Oil & Gas Conservation
Commission
Department of Natural Resources

Inspection Photos

Location Name: TEP ROCKY MOUNTAIN LLC GENTRY C Pad

Location #: 311695



Photo # 1085 Stained gravel & unused equipment



Photo # 1086 Stained gravel

Inspection Photos

Location Name: TEP ROCKY MOUNTAIN LLC GENTRY C Pad

Location #: 311695



Photo # 1094 Unused equipment



Photo # 1083 Unused equipment



COLORADO
Oil & Gas Conservation
Commission
Department of Natural Resources

Inspection Photos

Location Name: TEP ROCKY MOUNTAIN LLC GENTRY C Pad

Location #: 311695



Photo # 1096 Debris



Photo # 1122 Debris



Inspection Photos

Location Name: TEP ROCKY MOUNTAIN LLC GENTRY C Pad

Location #: 311695



Photo # 1090 Weeds/Undesirable plant species in secondary containment



Photo # 1093 Weeds/Undesirable plant species in secondary containment

Inspection Photos

Location Name: TEP ROCKY MOUNTAIN LLC GENTRY C Pad

Location #: 311695



Jun 20, 2023 at 9:54:55 AM
CO

Photo # 1110 Weeds/Undesirable plant species around wellheads



Jun 20, 2023 at 9:55:01 AM
CO

Photo # 1111 Weeds/Undesirable plant species around wellheads



COLORADO
Oil & Gas Conservation
Commission
Department of Natural Resources

Inspection Photos

Location Name: TEP ROCKY MOUNTAIN LLC GENTRY C Pad

Location #: 311695



Photo # 1112 Weeds/Undesirable plant species around wellheads



Photo # 1113 Weeds/Undesirable plant species around wellheads



COLORADO
Oil & Gas Conservation
Commission
Department of Natural Resources

Inspection Photos

Location Name: TEP ROCKY MOUNTAIN LLC GENTRY C Pad

Location #: 311695



Photo # 1114 Weeds/Undesirable plant species around wellheads



Photo # 1115 Weeds/Undesirable plant species around wellheads



COLORADO
Oil & Gas Conservation
Commission
Department of Natural Resources

Inspection Photos
Location Name: TEP ROCKY MOUNTAIN LLC GENTRY C Pad
Location #: 311695



Photo # 1116 Weeds/Undesirable plant species around wellheads



Photo # 1117 Weeds/Undesirable plant species around wellheads



Inspection Photos

Location Name: TEP ROCKY MOUNTAIN LLC GENTRY C Pad

Location #: 311695



Photo # 1126 Weeds/Undesirable plant species around wellheads