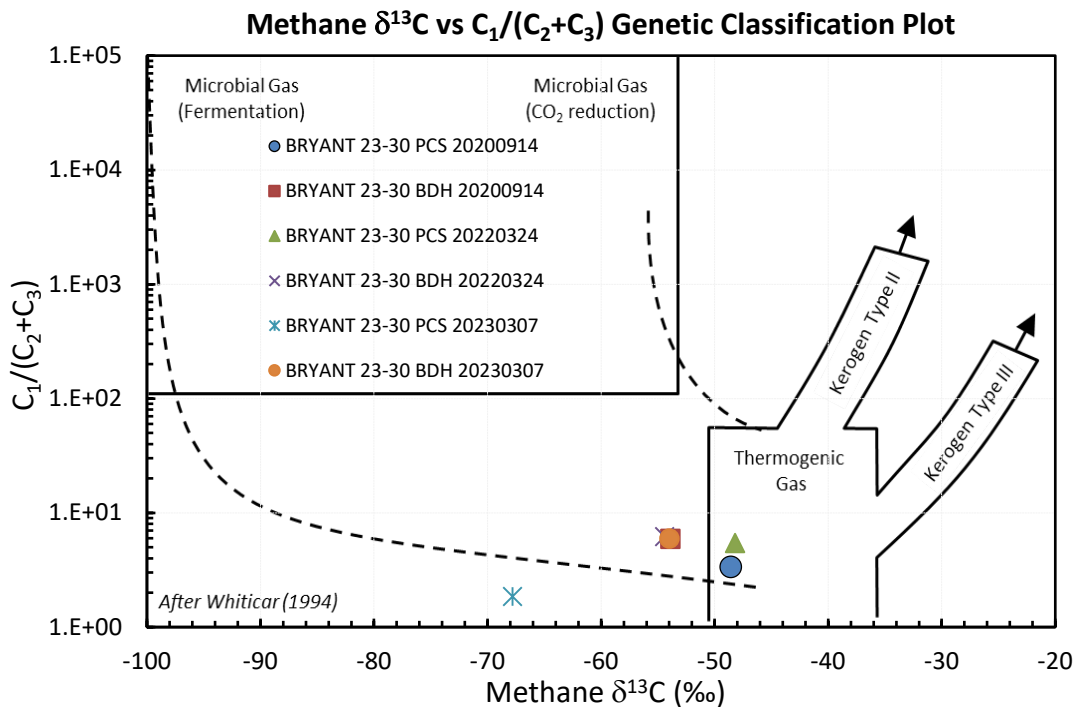
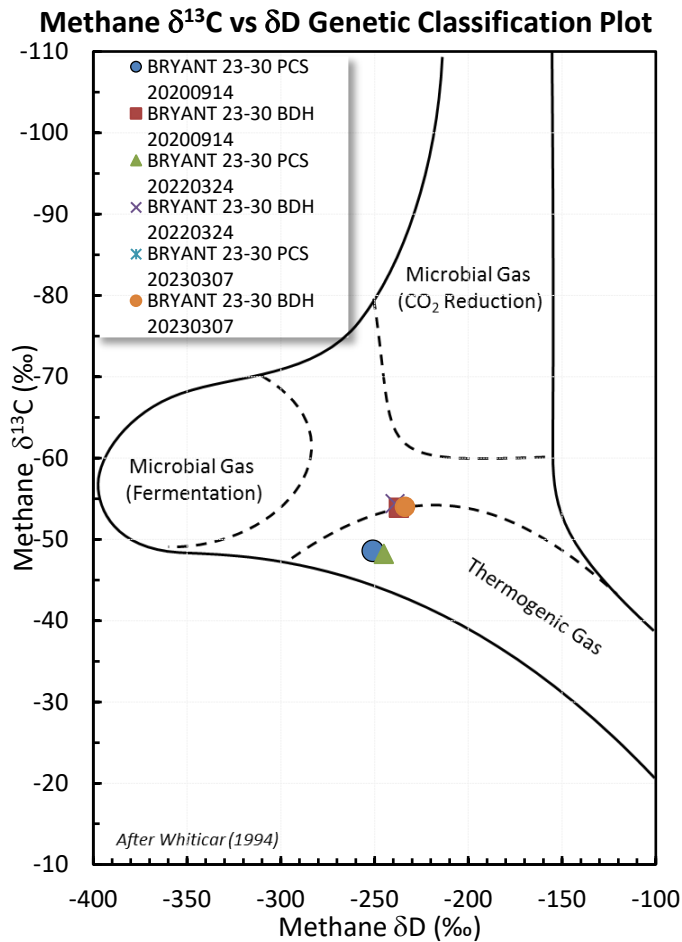
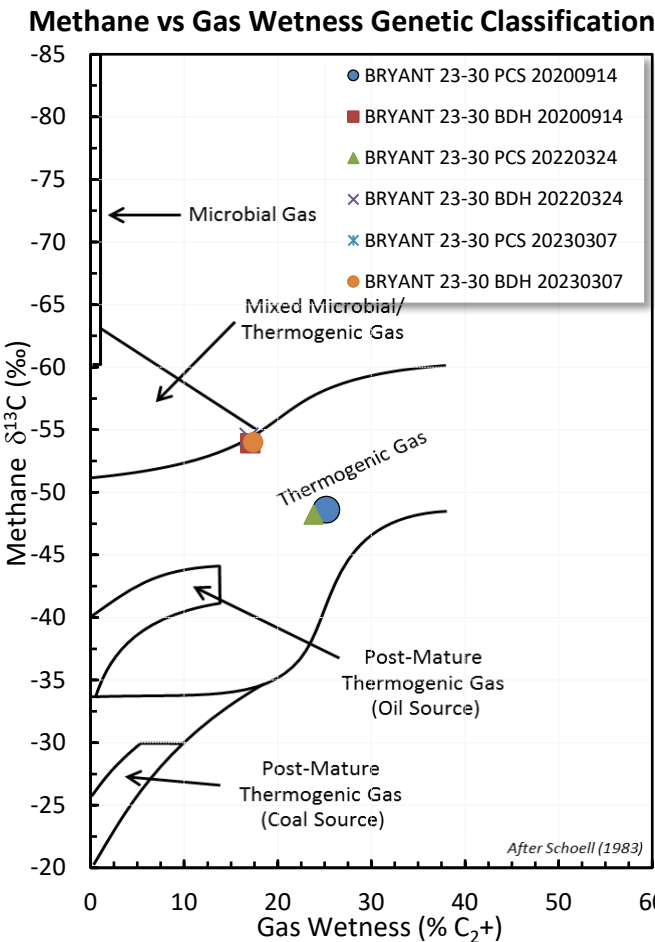
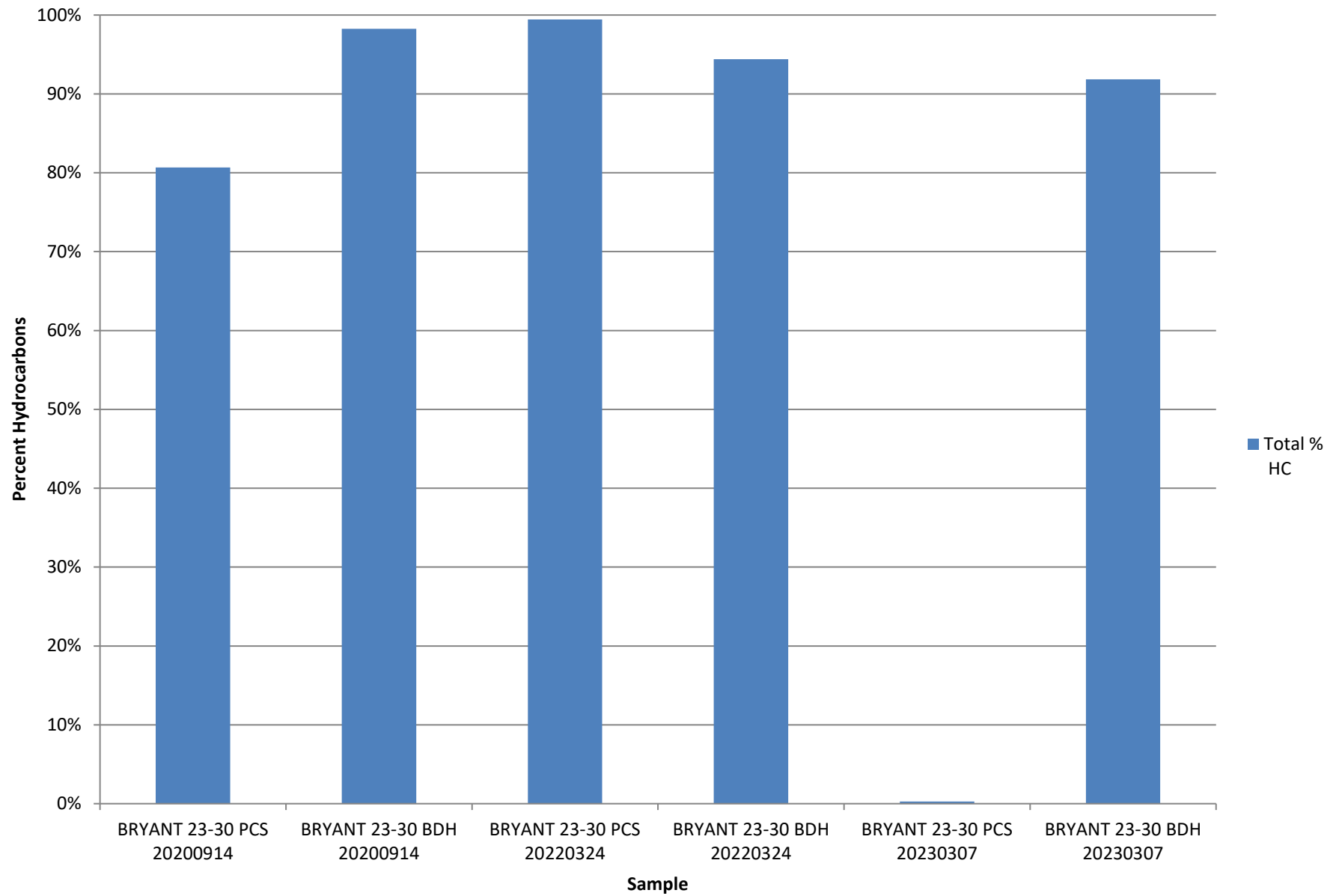


# Stable Isotope Interpretive Plots



## Total Percent Hydrocarbons



**GAS COMPOSITION**

GAS COMPOSITION (MOL %)

Parameter

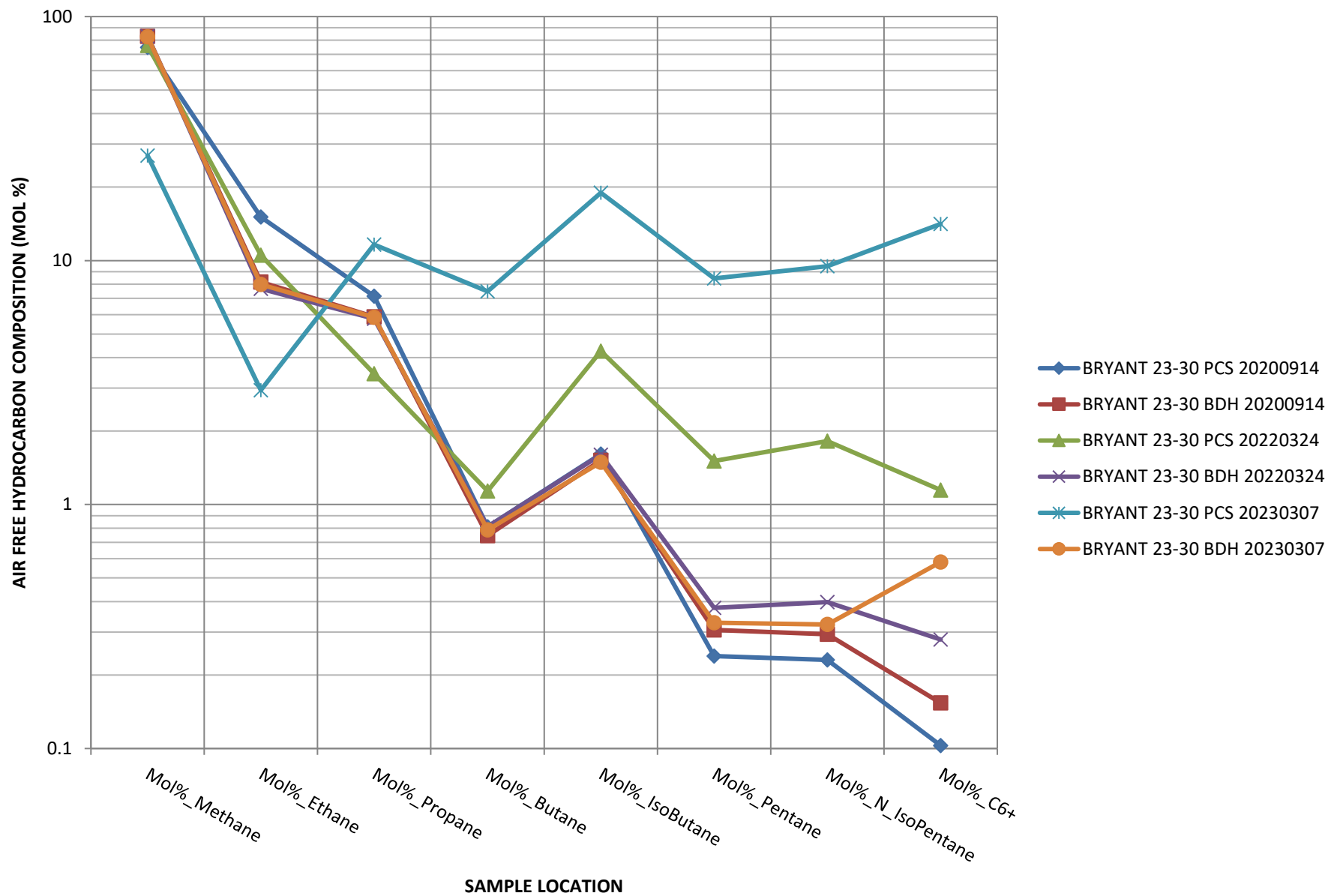
Legend:

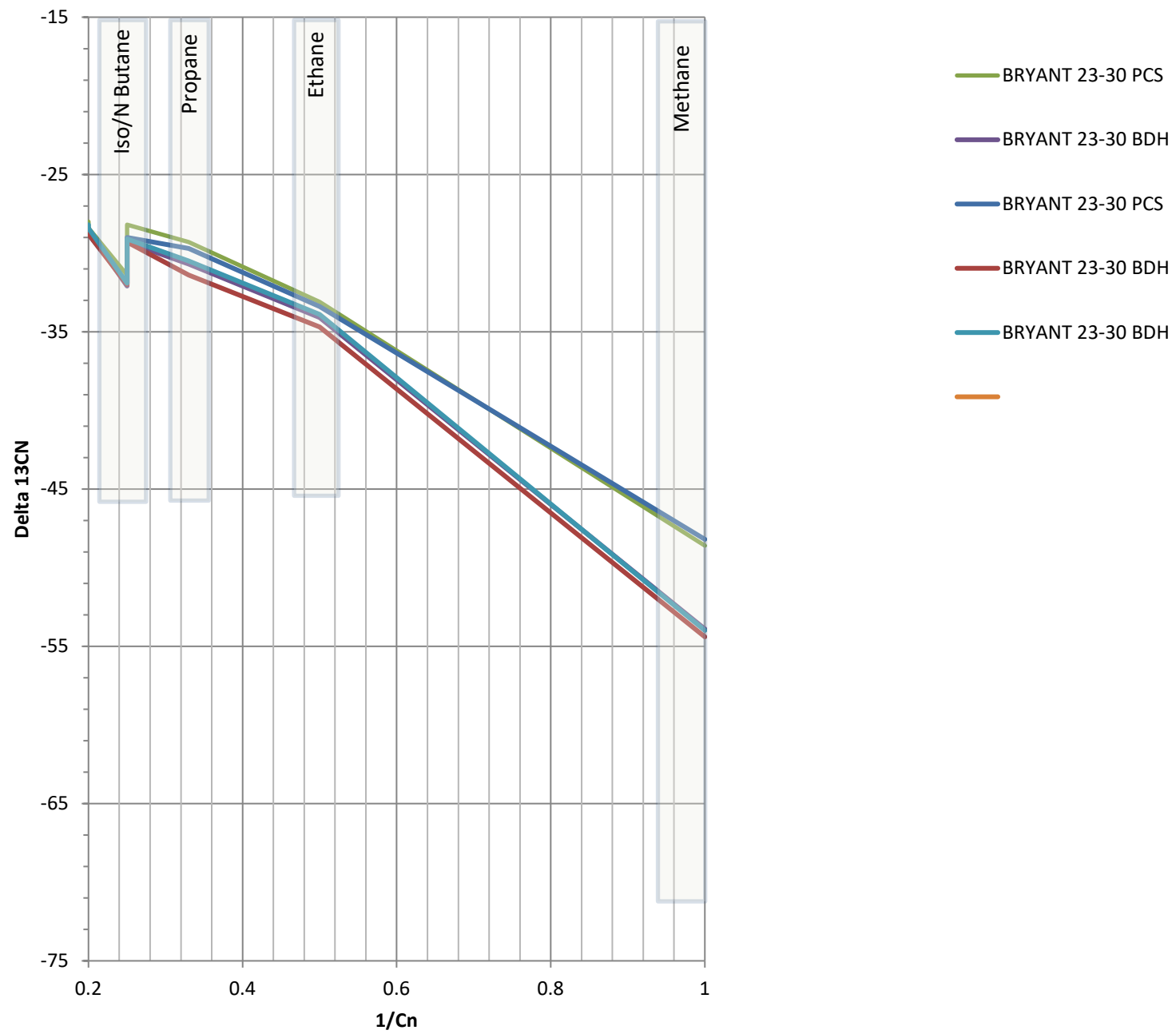
- BRYANT 23-30 PCS 20200914
- BRYANT 23-30 BDH 20200914
- BRYANT 23-30 PCS 20220324
- BRYANT 23-30 BDH 20220324
- BRYANT 23-30 PCS 20230307
- BRYANT 23-30 BDH 20230307

Parameter	BRYANT 23-30 PCS 20200914	BRYANT 23-30 BDH 20200914	BRYANT 23-30 PCS 20220324	BRYANT 23-30 BDH 20220324	BRYANT 23-30 PCS 20230307	BRYANT 23-30 BDH 20230307
Mol%_Nitrogen	18	1.6	0.4	4.5	75	6.5
Mol%_Oxygen	0.2	0.03	0.015	0.8	20	1.4
Mol%_Argon	0.2			0.04	0.9	0.06
Mol%_O2+AR					0.08	
Mol%_CarbonDioxide	0.001	0.05		0.06		0.06
Mol%_CarbonMonoxide	0.15		0.12			
Mol%_hydrogen	55	75	70	75	0.07	70
Mol%_Methane	11	8	10	7		7
Mol%_Ethane	5.5	5.5	3.5	5.5	0.03	5.5
Mol%_Propane	0.6	0.7	1.1	0.7	0.02	0.7
Mol%_Butane	1.2	1.4	4.5	1.4	0.05	1.3
Mol%_IsoButane	0.18	0.3	1.4	0.35	0.025	0.3
Mol%_N_Pentane	0.18	0.3	1.7	0.35	0.025	0.3
Mol%_IsoPentane	0.08	0.15	1.1	0.25	0.04	0.5
Mol%_C6+						

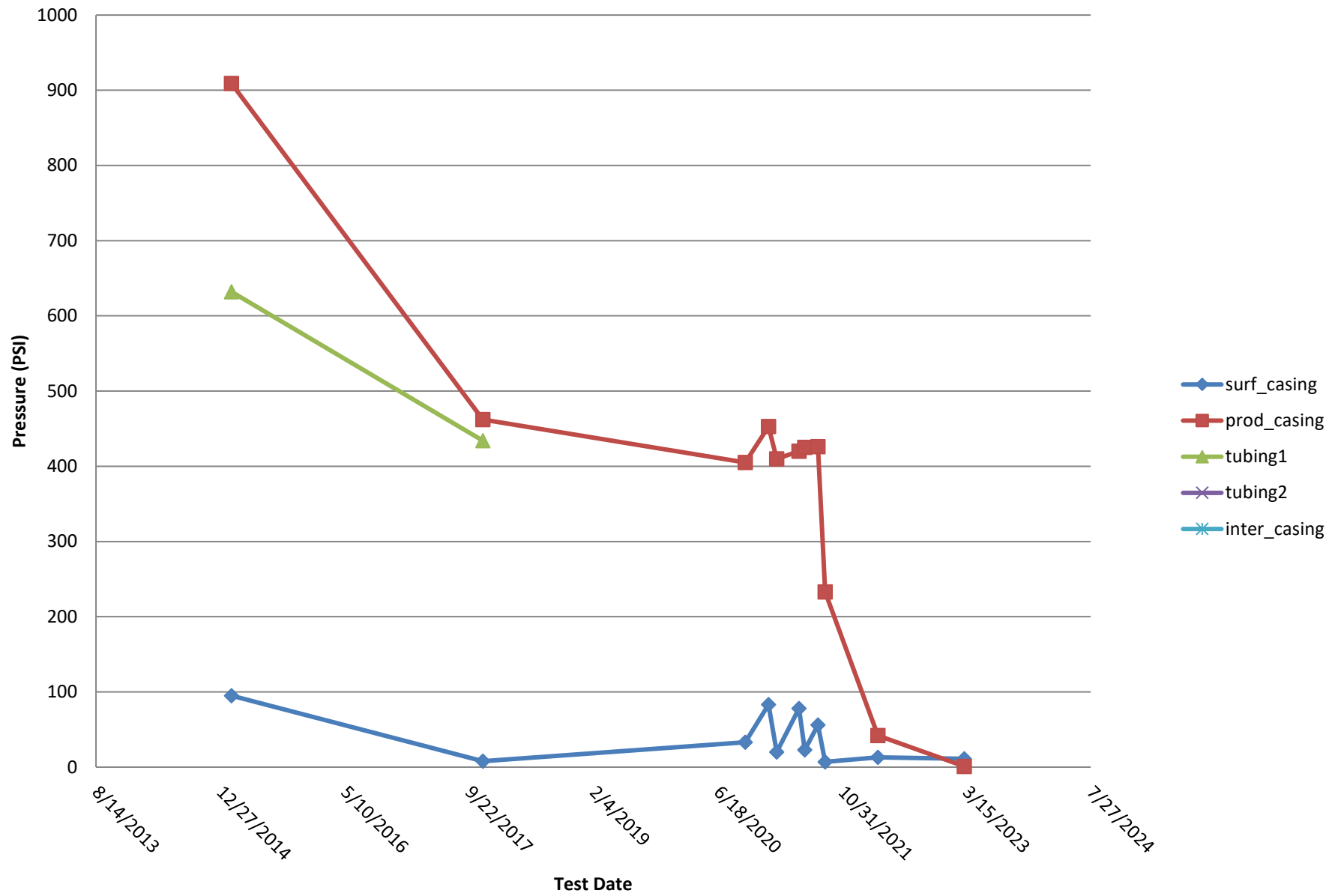
- BRYANT 23-30 PCS 20200914
- BRYANT 23-30 BDH 20200914
- BRYANT 23-30 PCS 20220324
- BRYANT 23-30 BDH 20220324
- BRYANT 23-30 PCS 20230307
- BRYANT 23-30 BDH 20230307

## HYDROCARBON COMPOSITION

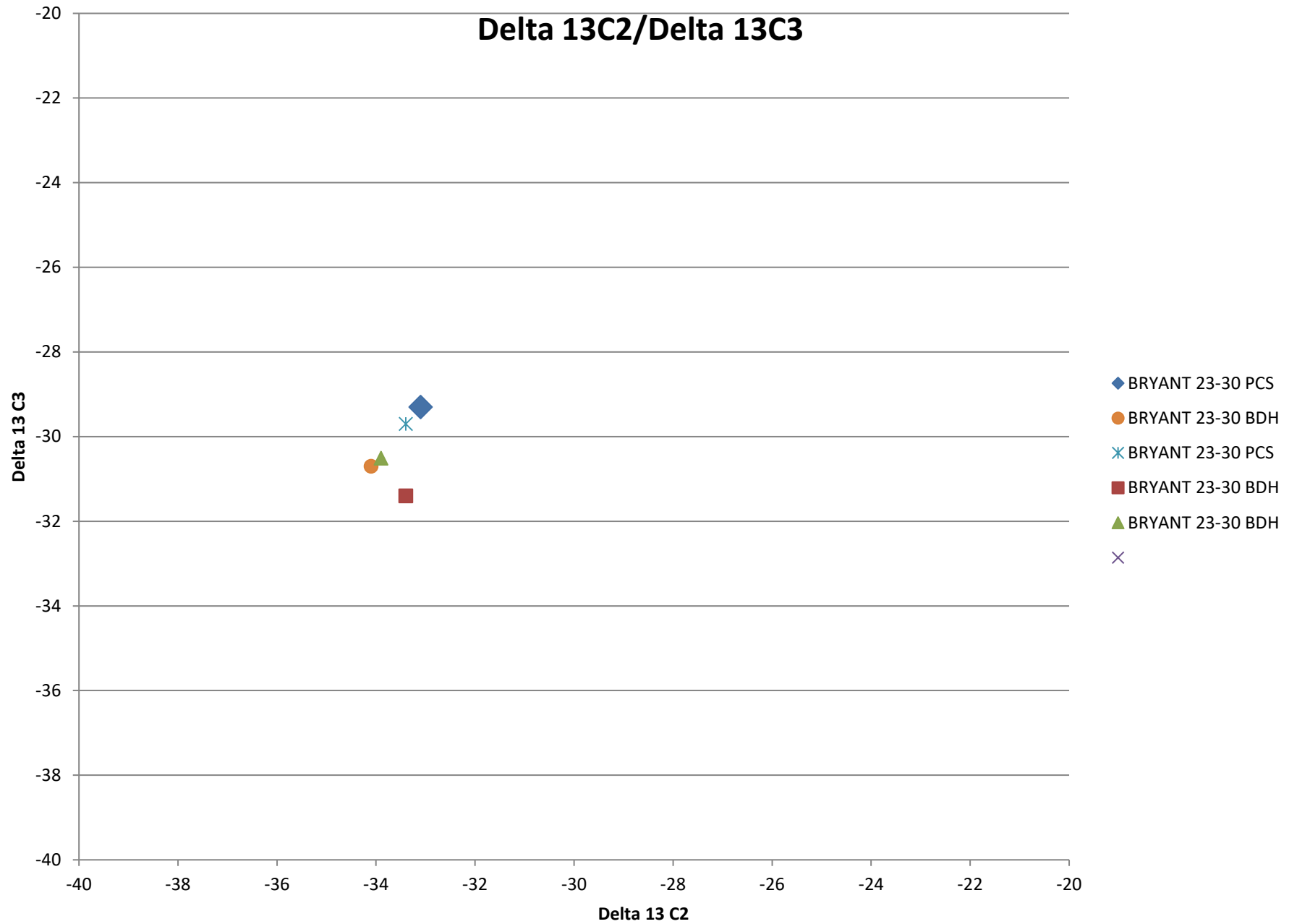




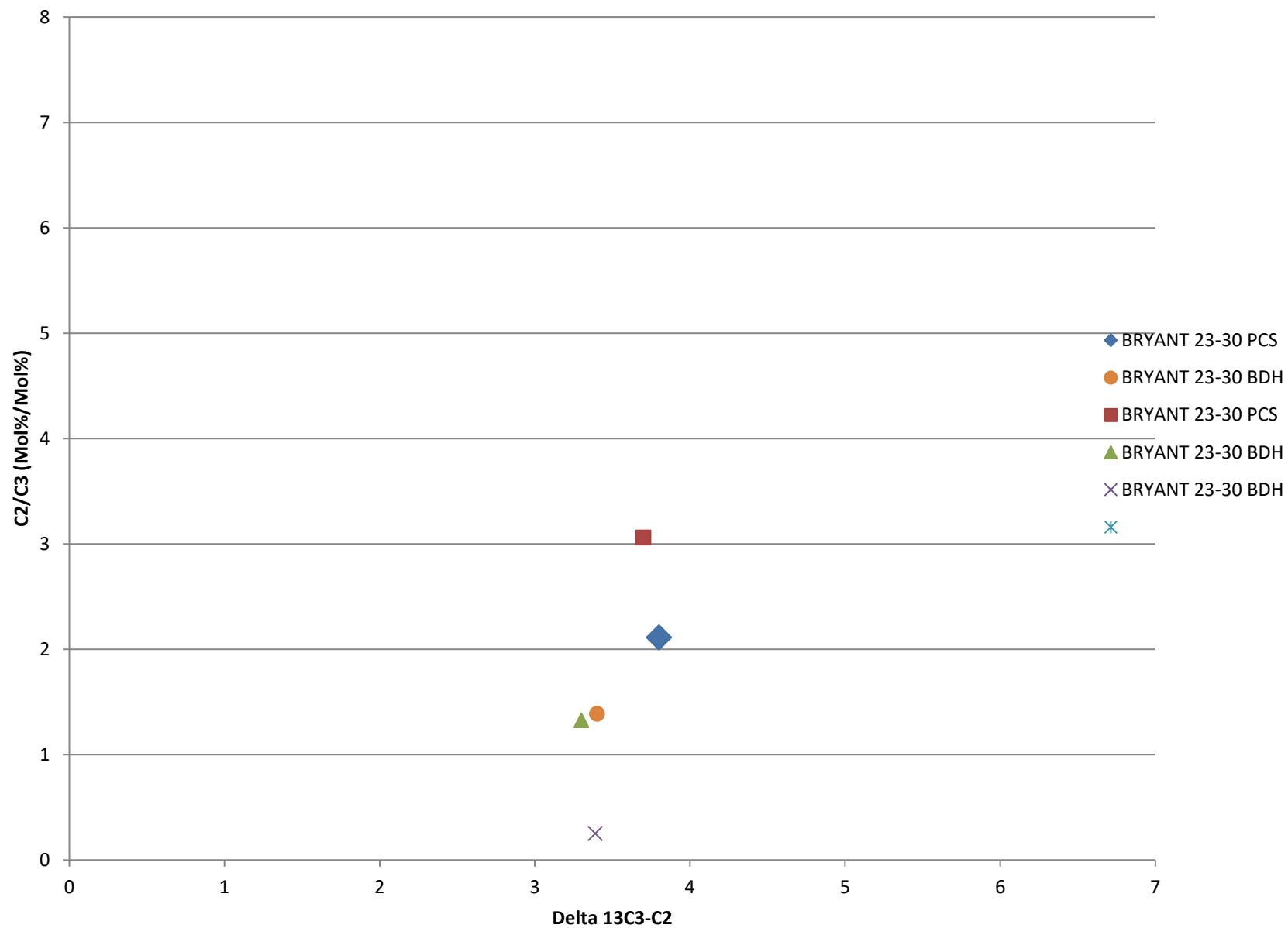
## Bradenhead Test Summary



# Delta 13C2/Delta 13C3



## Delta13 C2/C3 vs. Delta 13C3-C2





## Delta 13 IC4/ Delta NC4

